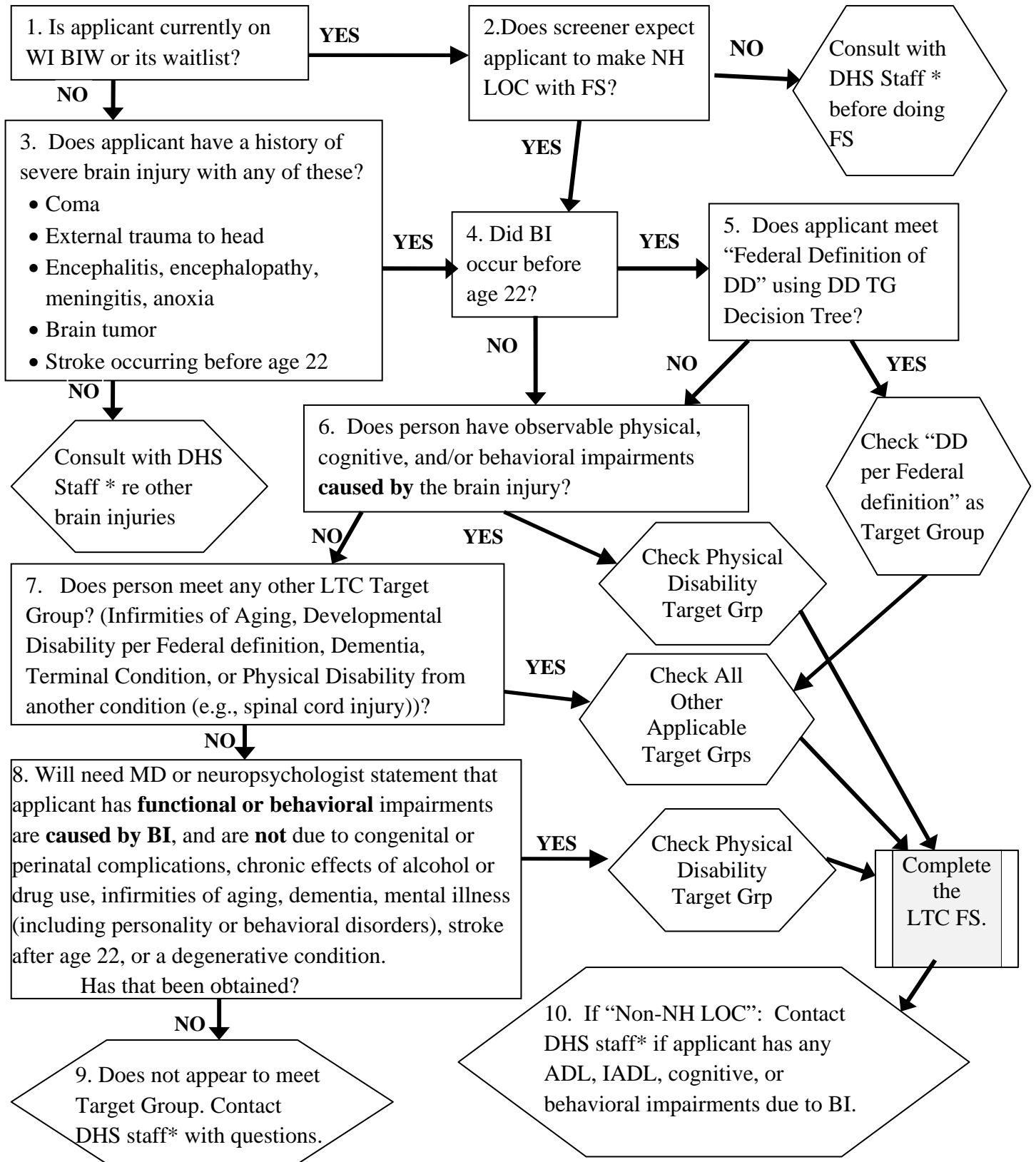


# LTC Functional Screen TARGET GROUPS (TG) for BRAIN INJURY



\* Dept. of Health Services LTC FS Staff for BI questions:

Ann Pooler, 608-658-6847, [Ann.Pooler@dhfs.wisconsin.gov](mailto:Ann.Pooler@dhfs.wisconsin.gov)

Lindsey Kreitzman, 608-261-6377, [Lindsey.Kreitzman@wisconsin.gov](mailto:Lindsey.Kreitzman@wisconsin.gov)

Nancy Rusch, 608-266-9303, [Nancy.Rusch@dhfs.wisconsin.gov](mailto:Nancy.Rusch@dhfs.wisconsin.gov)