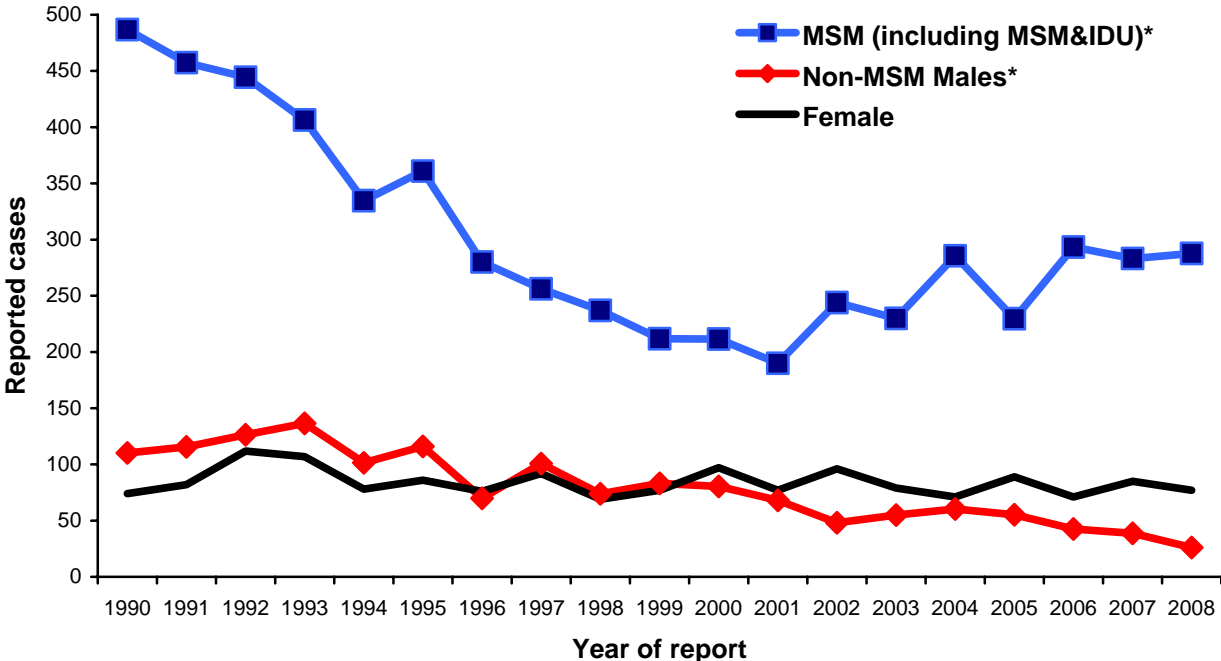


Wisconsin AIDS/HIV Surveillance Annual Report

Cases reported through December 31, 2008

Reported cases of HIV infection, MSM*, non-MSM males* and females, by year of report, Wisconsin, 1990-2008



* Imputed risk exposure. See technical notes.

Contents

	<u>Page</u>
Commentary	1
Table 1. Reported cases of HIV infection, Wisconsin, 1983-2008	4
Figure 1. Reported HIV infection, by year of report, Wisconsin, 1990-2008	5
Figure 2. Reported HIV infection per 100,000 population, by year of report, Wisconsin, 1990-2008.....	6
Figure 3. Estimated percentage of reported HIV infection by risk exposure*, Wisconsin, 2003-2007 and 2008.....	7
Figure 4. Number of deaths among persons reported with HIV infection, by year of death, Wisconsin, 1990-2006*.....	8
Figure 5. Reported with HIV infection presumed alive at year's end, Wisconsin, 1990-2008	9
Table 2. Reported HIV infection among males, Wisconsin, 1983-2008	10
Table 3. Reported HIV infection among females, Wisconsin, 1983-2008	11
Figure 6. Reported cases of HIV infection by sex and year of report, Wisconsin, 1990-2008	12
Figure 7. Reported cases of HIV infection per 100,000 population by sex and year of report, Wisconsin, 1990-2008.....	13
Figure 8. Estimated percentage of reported HIV infection, males by risk exposure*, Wisconsin, 2003-2007 and 2008	14
Figure 9. Reported cases of HIV infection, males by risk exposure* and year of report, Wisconsin, 1990-2008	15
Figure 10. Reported cases of HIV infection, MSM* by age group and year of report, Wisconsin, 2000-2008	16
Figure 11. Reported cases of HIV infection, MSM* 13-29 years of age by metropolitan group and year of report, Wisconsin, 2000-2008	17
Figure 12. Reported cases of HIV infection, MSM* 13-29 years of age, by race/ethnicity and year of report, Milwaukee MSA, 2000-2008	18
Figure 13. Estimated percentage of reported HIV infection, females by risk exposure*, Wisconsin, 2003-2007 and 2008	19
Figure 14. Reported cases of HIV infection, females by risk exposure* and year of report, Wisconsin, 1990-2008	20
Figure 15. Reported cases of HIV infection, MSM, non-MSM males and females, by year of report, Wisconsin, 1990-2008.....	21
Table 4. Reported cases of HIV infection among Whites, Wisconsin, 1983-2008	22

Table 5.	Reported cases of HIV infection among African Americans, Wisconsin, 1983-2008	23
Table 6.	Reported cases of HIV infection among Hispanics, Wisconsin, 1983-2008.....	24
Table 7.	Reported cases of HIV infection among American Indians, Wisconsin, 1983-2008	25
Table 8.	Reported cases of HIV infection among Asian/Pac. Islanders, Wisconsin, 1983-2008.....	26
Figure 16.	Reported cases of HIV infection by race/ethnicity and year of report, Wisconsin, 1990-2008	27
Figure 17.	Reported cases of HIV infection per 100,000 population by race/ethnicity and year of report, Wisconsin, 1990-2008.....	28
Figure 18.	Percentage of reported HIV infection by race/ethnicity, Wisconsin, 2002-2006 and 2008	29
Figure 19.	Reported cases of HIV infection per 100,000 population by race/ethnicity, Wisconsin, 2003-2007 and 2008	30
Figure 20.	Reported cases of HIV infection among males by race/ethnicity and year of report, Wisconsin, 1990-2008.....	31
Figure 21.	Reported cases of HIV infection per 100,000 population, males by race/ethnicity and year of report, Wisconsin, 1990-2008	32
Figure 22.	Percentage of reported HIV infection, males by race/ethnicity, Wisconsin, 2003-2007 and 2008.....	33
Figure 23.	Reported HIV infection per 100,000 population, males by race/ethnicity, Wisconsin, 2002-2006 and 2008	34
Figure 24.	Reported cases of HIV infection among females by race/ethnicity and year of report, Wisconsin, 1990-2008.....	35
Figure 25.	Reported cases of HIV infection per 100,000 population, females by race/ethnicity and year of report, Wisconsin, 1990-2008	36
Figure 26.	Percentage of reported HIV infection, females by race/ethnicity, Wisconsin, 2003-2007 and 2008.....	37
Figure 27.	Reported HIV infection per 100,000 population, females by race/ethnicity, Wisconsin, 2003-2007 and 2008	38
Table 9.	Reported cases of HIV infection by DHFS Region, Wisconsin, 1983-2008	39
Figure 28.	New cases of HIV infection reported in 2008 by county*, Wisconsin, December 31, 2008	40
Figure 29.	Reported cases of HIV infection presumed alive 2008 by county*, Wisconsin, December 31, 2008	41

Figure 30. Reported cases of HIV infection presumed alive per 100,000 population by county*, Wisconsin, December 31, 2008.....	42
Table 10. Reported cases of HIV infection, Northeastern Region, Wisconsin, 1983-2008.....	43
Table 11. Reported cases of HIV infection, by county, Northeastern Region, Wisconsin, 1983-2008.....	44
Table 12. Reported cases of HIV infection, Northern Region, Wisconsin, 1983-2008.....	45
Table 13. Reported cases of HIV infection, by county, Northern Region, Wisconsin, 1983-2008.....	46
Table 14. Reported cases of HIV infection, Southeastern Region, Wisconsin, 1983-2008	47
Table 15. Reported cases of HIV infection, by county, Southeastern Region, Wisconsin, 1983-2008.....	48
Table 16. Reported cases of HIV infection, Southern Region, Wisconsin, 1983-2008	49
Table 17. Reported cases of HIV infection, by county, Southern Region, Wisconsin, 1983-2008.....	50
Table 18. Reported cases of HIV infection, Western Region, Wisconsin, 1983-2008	51
Table 19. Reported cases of HIV infection, by county, Western Region, Wisconsin, 1983-2008.....	52
Figure 31. Department of Health and Family Services (DHFS) Public Health Regions	53
Technical notes	54

Commentary

- In the year 2008, 391 new cases of human immunodeficiency virus (HIV) infection¹ were reported in Wisconsin, bringing the total number of cases reported since 1983 (the year the first cases were reported in Wisconsin) to 10,316. Among all reported cases, 6,964 met the Centers for Disease Control and Prevention (CDC) criteria for acquired immune deficiency syndrome (AIDS); 3,352 persons have been reported with HIV infection but did not meet the AIDS case definition at the end of 2008.
- Wisconsin has historically had a low rate of HIV/AIDS morbidity compared to other states. During the year 2006 (the latest year the national data is currently available) Wisconsin had the tenth lowest AIDS case rate in the United States. The highest rates, in Maryland and New York, were eight-fold greater than the rate in Wisconsin.
- The annual number of reported cases of HIV infection reached a peak between 1990 and 1993 (average: 665 cases) and then declined for five years. For the past eleven years (1998-2008), the annual number of newly reported cases was relatively constant. During this period on average 384 new cases (95% confidence interval 338-430) were reported, 42% less than during the peak period.
- Deaths among persons reported with HIV infection in Wisconsin have also declined. Sixty-seven deaths among persons reported with HIV infection in Wisconsin are known to have occurred in 2007²; this is 82% less than the 373 deaths in 1993, the peak year.
- As deaths have declined, the number of persons reported with HIV that are presumed to be alive has continually increased. Since the year 2000, this increase has averaged 6% per year. At the end of 2008, 6,598 persons reported with HIV infection in Wisconsin were presumed to be alive (118 per 100,000), an all time high.

Newly reported HIV infection

Risk-exposure groups³

- Historically, the population most affected by HIV infection in Wisconsin has been men who have sex with men (MSM). In 2008, 74% of HIV cases were among MSM, including 70% among MSM without a history of injection drug use, and 4% among MSM who reported injection drug use (MSM&IDU). After a significant decline in the 1990's, MSM-attributed cases have increased in recent years. Between 2000 and 2008, cases reported among MSM increased 36%.
- Most of the MSM-attributed increase has been among young men. Statewide, between 2000 and 2008, the estimated number of reported cases among MSM thirty years of age and older increased 6%, the estimated number of cases among MSM less than thirty years of age increased 143%.
- In 2008 more than one half (52%) of the estimated cases among young MSM have been within the Milwaukee Metropolitan Statistical Area (MSA)⁴. Within that area approximately

¹ In this report, "HIV infection" refers to all persons with laboratory confirmed HIV infection. This includes both AIDS and non-AIDS cases. Case numbers in this report are provisional as of December 31, 2008.

² Due to delays in reporting of deaths, death data is provisional and an accurate estimate of total deaths in 2008 is not yet available.

³ Data in this section is derived from imputed risk exposure estimates. See Technical Notes.

70% of young MSM reported with HIV infection in 2008 were African American and the number of young African American MSM reported with HIV infection nearly tripled between 2000 and 2008.

- In 2008, 9% of reported HIV cases were among non-MSM injection drug users (IDU) and 16% were among persons with a history of high-risk heterosexual contact. Between 2000 and 2008, both IDU associated and high-risk heterosexual-associated cases have declined by about two thirds.
- Early in the epidemic, HIV transmission occurred among blood transfusion recipients and persons with hemophilia who received contaminated blood products. Since screening of the blood supply began in 1985, HIV transmission among transfusion recipients and persons with hemophilia has been very rare. In 2008, no new hemophilia or transfusion-associated cases were reported.
- Perinatal (mother-to-child) HIV transmission has always been uncommon in Wisconsin and has declined since treatments that reduce the likelihood of perinatal transmission were introduced in the mid-1990s. In 2008, three children were reported in Wisconsin with perinatally transmitted HIV infection. Two of these children were born outside the United States; one child was born in Wisconsin in 2008.⁵

Sex

- Throughout the epidemic, HIV infection in Wisconsin has disproportionately affected males. This trend has continued in recent years. In 2008, 80% of persons reported with HIV infection were males. The reported HIV infection rate for males was four-fold greater than the rate for females.
- As previously mentioned the number of new cases reported among MSM has substantially increased since 2000. During the same period cases among females and non-IDU have declined.

Age at time of diagnosis

- Throughout the epidemic, most persons diagnosed with HIV infection have been between 25 and 44 years of age. In 2007, the median age of cases reported was 32 years (range: 0-73 years). It is important to note that the age at diagnosis of HIV infection is not usually the age when HIV infection was acquired. The CDC estimates that at least one-half of all persons with HIV infection in the U.S. acquired the disease before they were 25 years old.

Race/ethnicity

- Historically, HIV infection has had a disproportionately high impact on minority populations in Wisconsin. Race/ethnic minorities comprise 12% of the Wisconsin population, but 55% of all HIV cases reported in 2008. The reported HIV infection rate in 2008 was eleven-fold greater for African Americans and five-fold greater for Hispanics compared to the rate for whites.
- In 2008, 52% of all males reported with HIV infection were race/ethnic minorities. The reported HIV infection rate among males was eleven-fold greater for African Americans and four-fold greater for Hispanics compared to the rate for white males.

⁴ The Milwaukee Metropolitan Area includes Milwaukee, Ozaukee, Washington and Waukesha counties.

⁵ These findings are provisional due to delays in reporting.

- The race/ethnic disparity is even greater for females. In 2008, 68% of all females reported with HIV infection were members of race/ethnic minority groups. The reported HIV infection rate was 21-fold greater for African American females and 8-fold greater for Hispanic females than the rate for white females.

Geographic Residency

- Since 1983, HIV infection has been reported from every Wisconsin county. In 2008 cases were reported from 39 of the 72 counties in Wisconsin.
- While cases have been reported from all parts of the state, the impact of HIV infection has historically been greatest in Milwaukee County. In 2008, 46% of new were reported from Milwaukee County and the rate of newly reported HIV infection in Milwaukee County (19 per 100,000 population) was nearly five-fold greater than the rate in the remainder of Wisconsin (4 per 100,000 population).

Persons living with HIV infection

- Statewide, 80% of persons living with HIV infection are male, and MSM was the single largest risk-exposure group. Persons living with HIV infection are an ageing population, 51% were 45 years of age or older at the end of 2008.
- The race/ethnic disparity that has been noted for newly reported cases is also a feature of persons living with HIV infection. Race/ethnic minorities constitute 51% of persons living with HIV infection in Wisconsin and have HIV prevalence rates that are markedly higher than the rate among whites.
- Persons with HIV infection are living in every part of the state, but the distribution of persons living with HIV infection is uneven. At the end of 2008, the prevalence of HIV infection was lowest in the Northeastern, Northern and Western regions of the state. Together these three regions had 1,209 persons living with HIV infection, 18% of the statewide total. Within these regions, two counties (Brown and La Crosse) had more than 100 persons living with HIV infection. The HIV prevalence rates in these three regions ranged between 39 and 52 per 100,000. Most counties within these regions had low prevalence rates; only two counties (La Crosse and Menominee) had HIV prevalence rates above statewide rate.
- The number of persons living with HIV in the Southern Region was slightly greater than the combined total for the Northeastern, Northern and Western regions. In the Southern Region, there were 1,234 persons living with HIV infection at the end of 2008 and the HIV prevalence (118 per 100,000) was the same as the overall HIV prevalence rate for the state. In the Southern Region, most persons living with HIV infection were within Dane County which had the highest HIV prevalence rate in the Southern Region. Rock County had the second highest number of persons living with HIV infection in the Southern Region.
- At the end of 2008, there were an estimated 3,965 persons living with HIV infection in the Southeastern Region, representing 60% of all persons living with HIV infection statewide. The HIV prevalence rate for this region was 190 per 100,000. Milwaukee County had an estimated 3,273 persons living with HIV infection (344 per 100,000 population). This was the highest number and rate for any county in Wisconsin and represented 50% of all persons living with HIV in the state. Three other counties in the Southeastern Region (Kenosha, Racine, and Waukesha) each had more than 100 cases.

**Table 1. Reported cases of HIV infection
Wisconsin, 1983-2008**

	Year of report											
	1983-2008(a)		2003-2007				2008			Presumed alive		
	Cases	%	Cases	Avg(b)	%	Rate(c)	Cases	%	Rate(c)	Cases	%	Rate(c)
Total												
Total cases(d)	10,316	100%	1,969	394	100%	7	391	100%	7	6,598	100%	118
Disease category												
AIDS	6,964	68%	929	186	47%	3	144	37%	3	3,529	53%	63
Non-AIDS	3,352	32%	1,040	208	53%	4	247	63%	4	3,069	47%	55
Sex												
Male	8,577	83%	1,574	315	80%	11	314	80%	11	5,294	80%	190
Female	1,739	17%	395	79	20%	3	77	20%	3	1,304	20%	46
Unknown	0	0%	0	0	0%	-	0	0%	-	0	0%	-
Race/Ethnicity												
White	5,672	55%	939	188	48%	4	176	45%	4	3,238	49%	67
African American	3,454	33%	701	140	36%	40	152	39%	44	2,469	37%	711
Hispanic	983	10%	268	54	14%	20	51	13%	19	741	11%	273
American Indian	90	1%	16	3	1%	6	4	1%	8	50	1%	98
Asian/Pacific Islander	71	1%	30	6	2%	5	4	1%	3	59	1%	50
Multi-racial	42	0%	15	3	1%	-	1	0%	-	39	1%	-
Unknown	4	0%	0	0	0%	-	3	1%	-	2	0%	-
Age(e)												
<5	86	1%	15	3	1%	1	3	1%	1	5	0%	1
5-14	40	0%	8	2	0%	0	0	0%	0	33	1%	5
15-19	270	3%	69	14	4%	4	22	6%	6	46	1%	12
20-24	1,160	11%	257	51	13%	13	62	16%	16	179	3%	46
25-44	7,249	70%	1,237	247	63%	16	229	59%	15	2,981	45%	198
45+	1,511	15%	383	77	19%	3	75	19%	3	3,353	51%	150
Unknown	0	0%	0	0	0%	-	0	0%	-	1	0%	-
Risk exposure												
Men who have sex with men (MSM)	5,431	53%	965	193	49%	-	203	52%	-	3,234	49%	-
MSM and IDU	706	7%	120	24	6%	-	10	3%	-	434	7%	-
Injecting drug use (IDU)	1,429	14%	172	34	9%	-	19	5%	-	829	13%	-
High-risk heterosexual contact	1,226	12%	248	50	13%	-	32	8%	-	934	14%	-
Other	280	3%	21	4	1%	-	3	1%	-	132	2%	-
Undetermined	1,244	12%	443	89	22%	-	124	32%	-	1,035	16%	-
Year of first report	Cases	%	Rate(c)									
Cases reported before 1999	6,472	63%	-									
1999	372	4%	7									
2000	389	4%	7									
2001	335	3%	6									
2002	388	4%	7									
2003	364	4%	7									
2004	417	4%	8									
2005	374	4%	7									
2006	407	4%	7									
2007	407	4%	7									
2008	391	4%	7									

- a. The first cases of HIV infection in Wisconsin were reported in 1983. Thus, these represent cumulative cases through the specified date.
b. The average annual cases in the specified period.
c. Cases per 100,000 population. Rates not available for risk exposure groups.
d. Demographic and risk exposure breakdown not shown if total is less than 5 cases.
e. Age when first diagnosed with HIV infection, except for cases presumed alive where age is age on 12/31/2008.

**Figure 1. Reported cases of HIV infection by year of report
Wisconsin, 1990-2008**

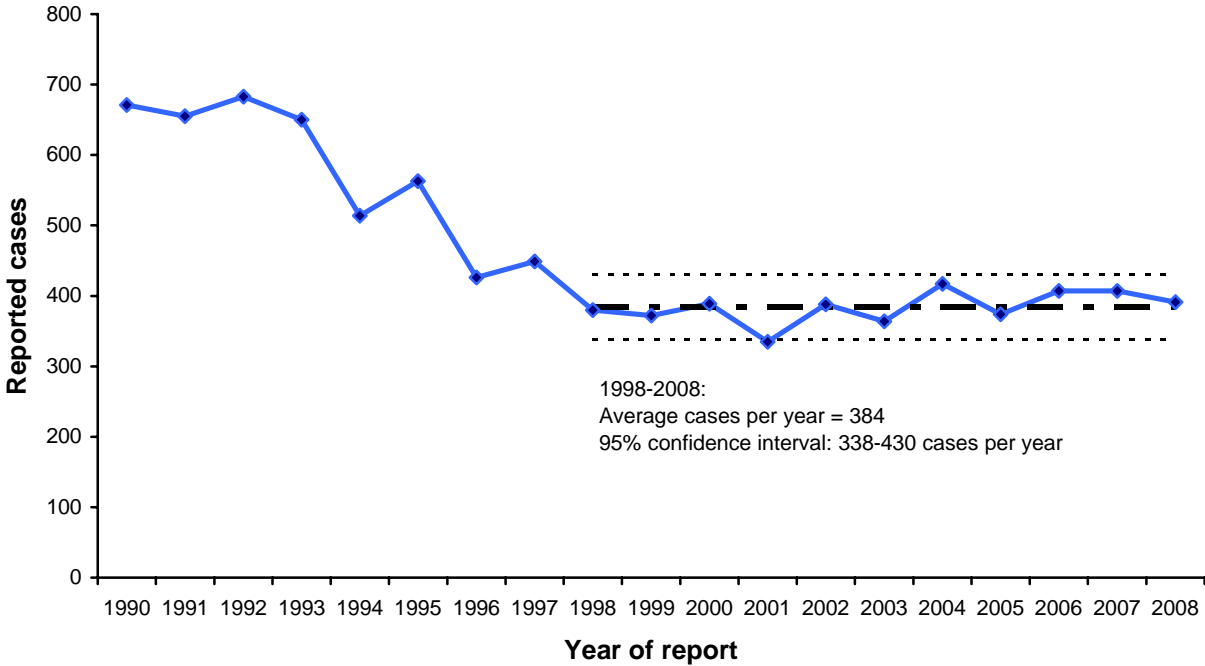


Figure 2. Reported cases of HIV infection per 100,000 population by year of report, Wisconsin, 1990-2008

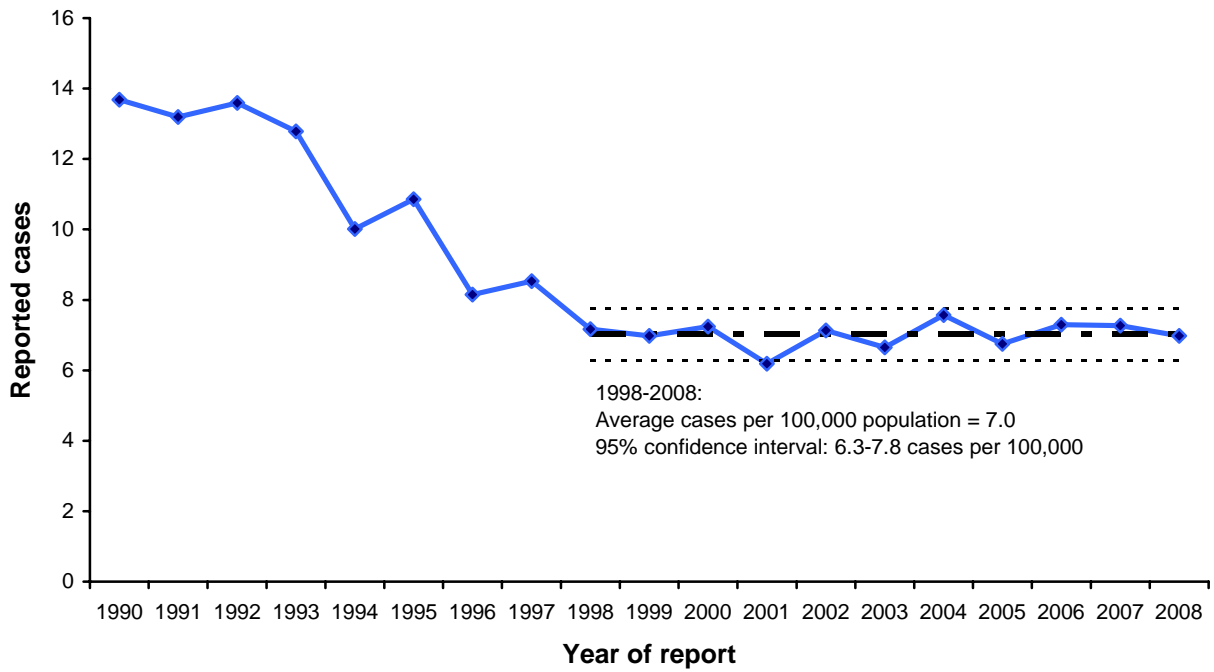
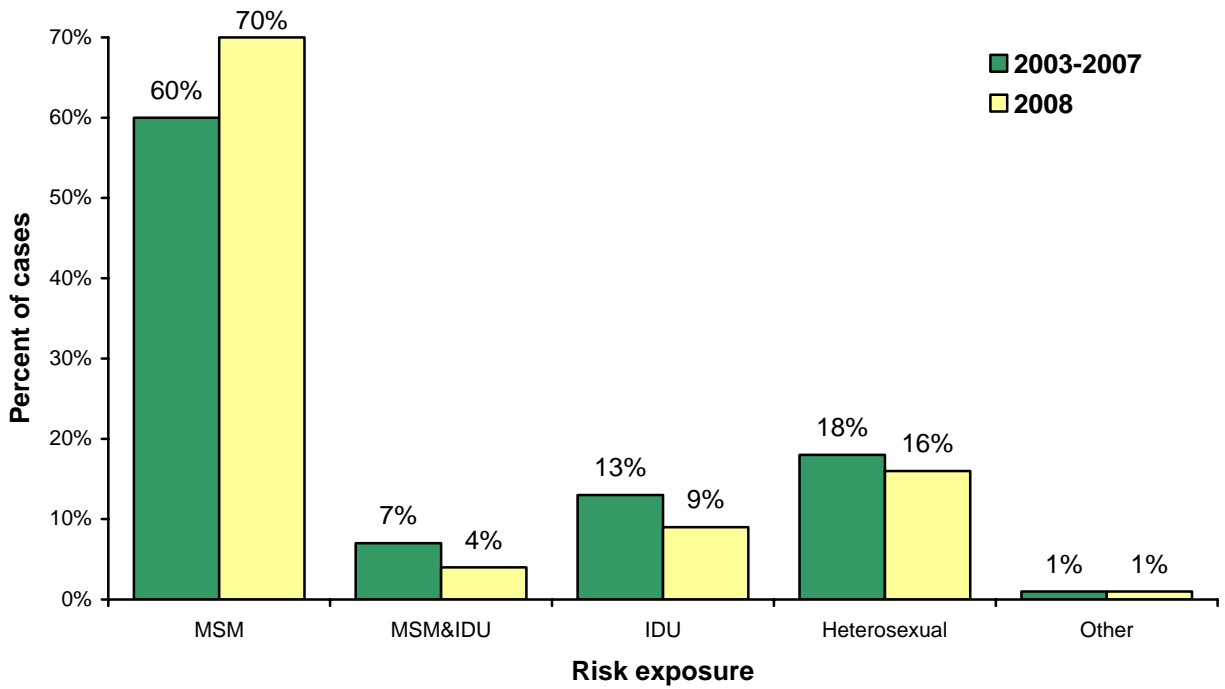
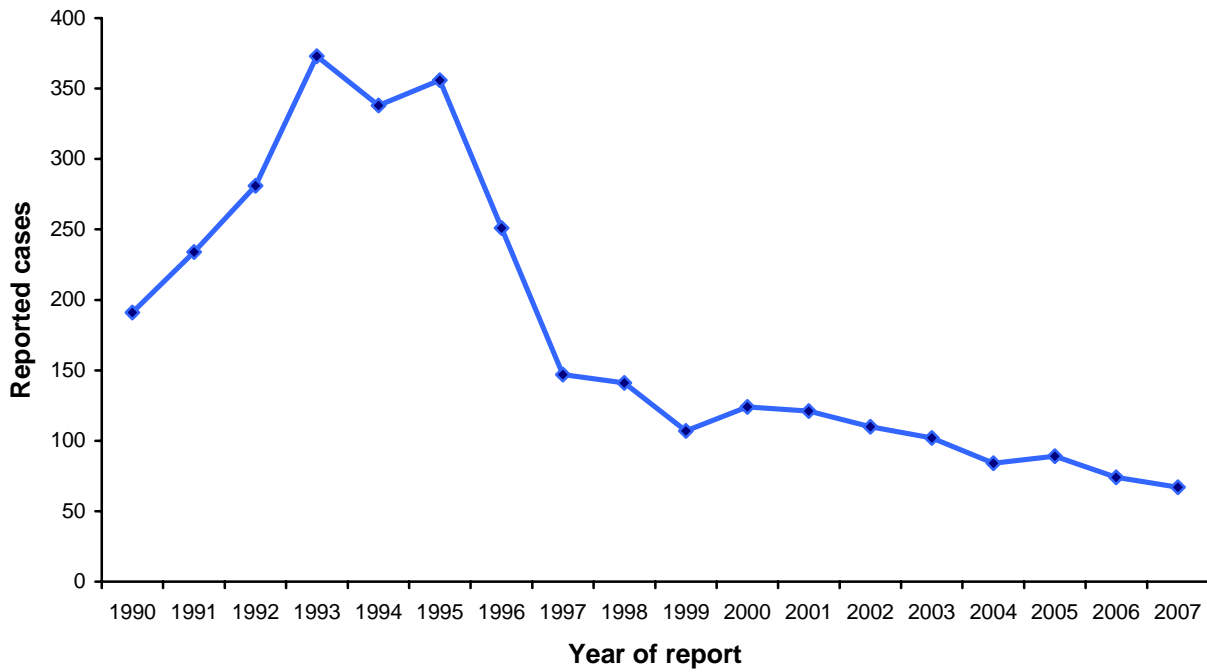


Figure 3. Estimated percentage of reported HIV infection by risk exposure*, Wisconsin, 2003-2007 and 2008



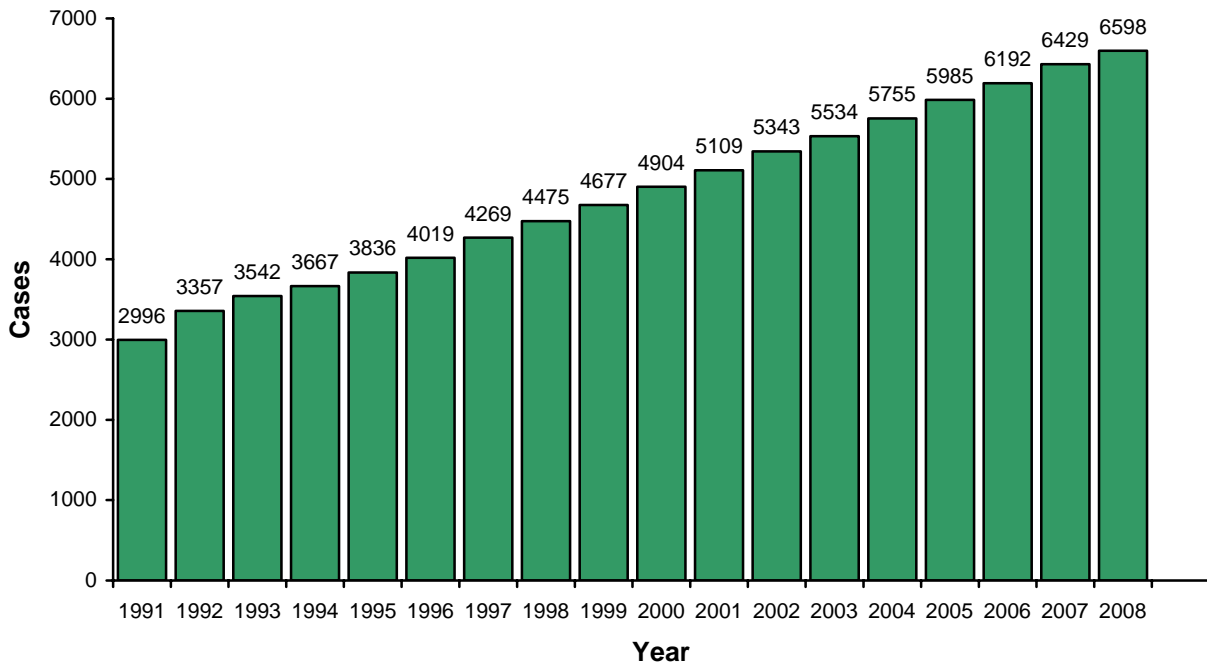
* Imputed risk exposure. See technical notes.

Figure 4. Number of deaths among persons reported with HIV infection by year of death, Wisconsin, 1990-2007*



* Because of delays in death reporting, 2008 provisional data is not available.

Figure 5. Reported cases of HIV infection, presumed alive at year's end, Wisconsin, 1990-2008



**Table 2. Reported cases of HIV infection
Males, Wisconsin, 1983-2008**

	Year of report											
	1983-2008(a)		2003-2007				2008			Presumed alive		
	Cases	%	Cases	Avg(b)	%	Rate(c)	Cases	%	Rate(c)	Cases	%	Rate(c)
Total												
Total cases(d)	8,577	100%	1,574	315	100%	11	314	100%	11	5,294	100%	190
Disease category												
AIDS	5,945	69%	747	149	47%	5	115	37%	4	2,893	55%	104
Non-AIDS	2,632	31%	827	165	53%	6	199	63%	7	2,401	45%	86
Race/Ethnicity												
White	5,094	59%	831	166	53%	7	151	48%	6	2,848	54%	119
African American	2,579	30%	485	97	31%	57	114	36%	67	1,783	34%	1,055
Hispanic	758	9%	214	43	14%	29	41	13%	28	559	11%	382
American Indian	58	1%	11	2	1%	8	4	1%	16	31	1%	122
Asian/Pacific Islander	52	1%	20	4	1%	7	2	1%	3	40	1%	67
Multi-racial	33	0%	13	3	1%	-	0	0%	-	31	1%	-
Unknown	3	0%	0	0	0%	-	2	1%	-	2	0%	-
Age(e)												
<5	40	0%	5	1	0%	1	1	0%	1	0	0%	0
5-14	29	0%	4	1	0%	0	0	0%	0	14	0%	4
15-19	173	2%	44	9	3%	4	18	6%	9	29	1%	14
20-24	915	11%	209	42	13%	21	47	15%	23	134	3%	67
25-44	6,158	72%	1,011	202	64%	26	191	61%	25	2,318	44%	302
45+	1,262	15%	301	60	19%	6	57	18%	5	2,799	53%	264
Unknown	0	0%	0	0	0%	-	0	0%	-	-	-	-
Risk exposure												
Men who have sex with men (MSM)	5,431	63%	965	193	61%	-	203	65%	-	3,234	61%	-
MSM and IDU	706	8%	120	24	8%	-	10	3%	-	434	8%	-
Injecting drug use (IDU)	990	12%	103	21	7%	-	11	4%	-	554	10%	-
High-risk heterosexual contact	356	4%	78	16	5%	-	6	2%	-	266	5%	-
Other	201	2%	12	2	1%	-	1	0%	-	82	2%	-
Undetermined	893	10%	296	59	19%	-	83	26%	-	724	14%	-
Year of first report	Cases	%	Rate(c)									
Cases reported before 1999	5,552	65%	-									
1999	295	3%	11									
2000	292	3%	11									
2001	258	3%	10									
2002	292	3%	11									
2003	285	3%	11									
2004	346	4%	13									
2005	285	3%	10									
2006	336	4%	12									
2007	322	4%	12									
2008	314	4%	11									

- a. The first cases of HIV infection in Wisconsin were reported in 1983. Thus, these represent cumulative cases through the specified date.
- b. The average annual cases in the specified period.
- c. Cases per 100,000 population. Rates not available for risk exposure groups.
- d. Demographic and risk exposure breakdown not shown if total is less than 5 cases.
- e. Age when first diagnosed with HIV infection, except for cases presumed alive where age is age on 12/31/2008.

**Table 3. Reported cases of HIV infection
Females, Wisconsin, 1983-2008**

	Year of report											
	1983-2008(a)		2003-2007				2008			Presumed alive		
	Cases	%	Cases	Avg(b)	%	Rate(c)	Cases	%	Rate(c)	Cases	%	Rate(c)
Total												
Total cases(d)	1,739	100%	395	79	100%	3	77	100%	3	1,304	100%	46
Disease category												
AIDS	1,019	59%	182	36	46%	1	29	38%	1	636	49%	23
Non-AIDS	720	41%	213	43	54%	2	48	62%	2	668	51%	24
Race/Ethnicity												
White	578	33%	108	22	27%	1	25	32%	1	390	30%	16
African American	875	50%	216	43	55%	24	38	49%	21	686	53%	385
Hispanic	225	13%	54	11	14%	9	10	13%	8	182	14%	145
American Indian	32	2%	5	1	1%	4	0	0%	0	19	1%	74
Asian/Pacific Islander	19	1%	10	2	3%	3	2	3%	3	19	1%	32
Multi-racial	9	1%	2	0	1%	-	1	1%	-	8	1%	-
Unknown	1	0%	0	0	0%	-	1	1%	-	0	0%	-
Age(e)												
<5	46	3%	10	2	3%	1	2	3%	1	5	0%	3
5-14	11	1%	4	1	1%	0	0	0%	0	19	1%	5
15-19	97	6%	25	5	6%	3	4	5%	2	17	1%	9
20-24	245	14%	48	10	12%	5	15	19%	8	45	3%	23
25-44	1,091	63%	226	45	57%	6	38	49%	5	663	51%	90
45+	249	14%	82	16	21%	1	18	23%	2	554	42%	47
Unknown	0	0%	0	0	0%	-	0	0%	-	1	0%	-
Risk exposure												
Men who have sex with men (MSM)	0	0%	0	0	0%	-	0	0%	-	0	0%	-
MSM and IDU	0	0%	0	0	0%	-	0	0%	-	0	0%	-
Injecting drug use (IDU)	439	25%	69	14	17%	-	8	10%	-	275	21%	-
High-risk heterosexual contact	870	50%	170	34	43%	-	26	34%	-	668	51%	-
Other	79	5%	9	2	2%	-	2	3%	-	50	4%	-
Undetermined	351	20%	147	29	37%	-	41	53%	-	311	24%	-
Year of first report	Cases	%	Rate(c)									
Cases reported before 1999	920	53%	-									
1999	77	4%	3									
2000	97	6%	4									
2001	77	4%	3									
2002	96	6%	3									
2003	79	5%	3									
2004	71	4%	3									
2005	89	5%	3									
2006	71	4%	3									
2007	85	5%	3									
2008	77	4%	3									

- a. The first cases of HIV infection in Wisconsin were reported in 1983. Thus, these represent cumulative cases through the specified date.
- b. The average annual cases in the specified period.
- c. Cases per 100,000 population. Rates not available for risk exposure groups.
- d. Demographic and risk exposure breakdown not shown if total is less than 5 cases.
- e. Age when first diagnosed with HIV infection, except for cases presumed alive where age is age on 12/31/2008.

**Figure 6. Reported cases of HIV infection by sex and year of report
Wisconsin, 1990-2008**

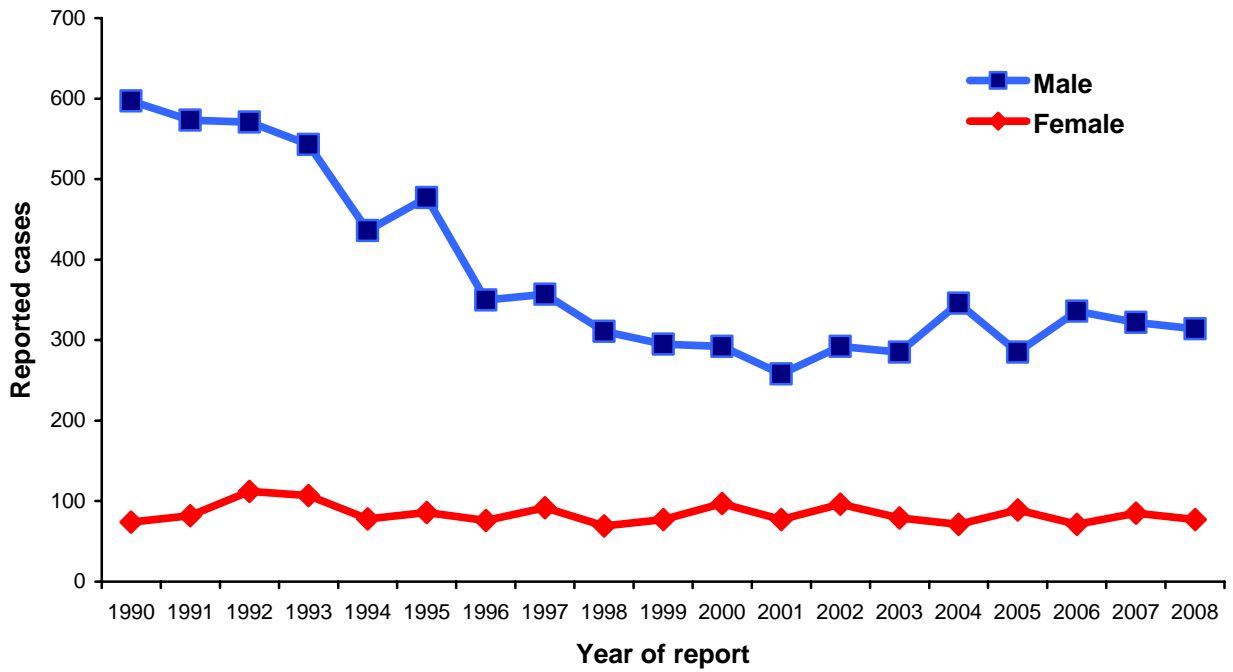


Figure 7. Reported cases of HIV infection per 100,000 population by sex and year of report, Wisconsin, 1990-2008

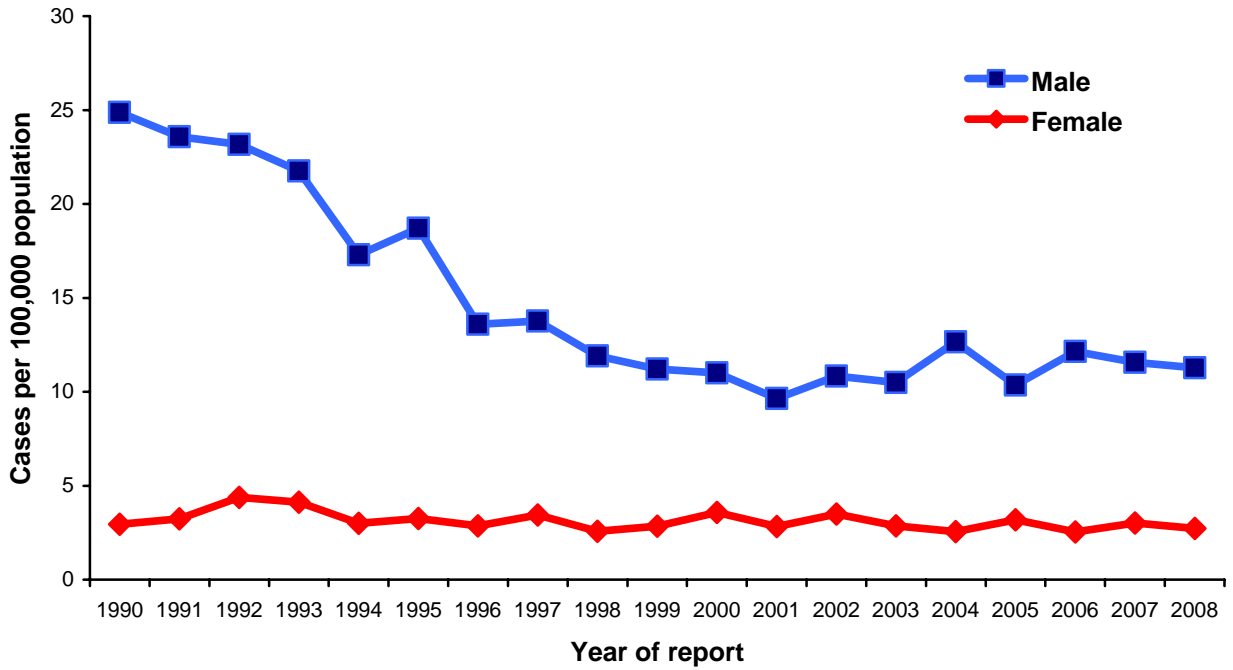
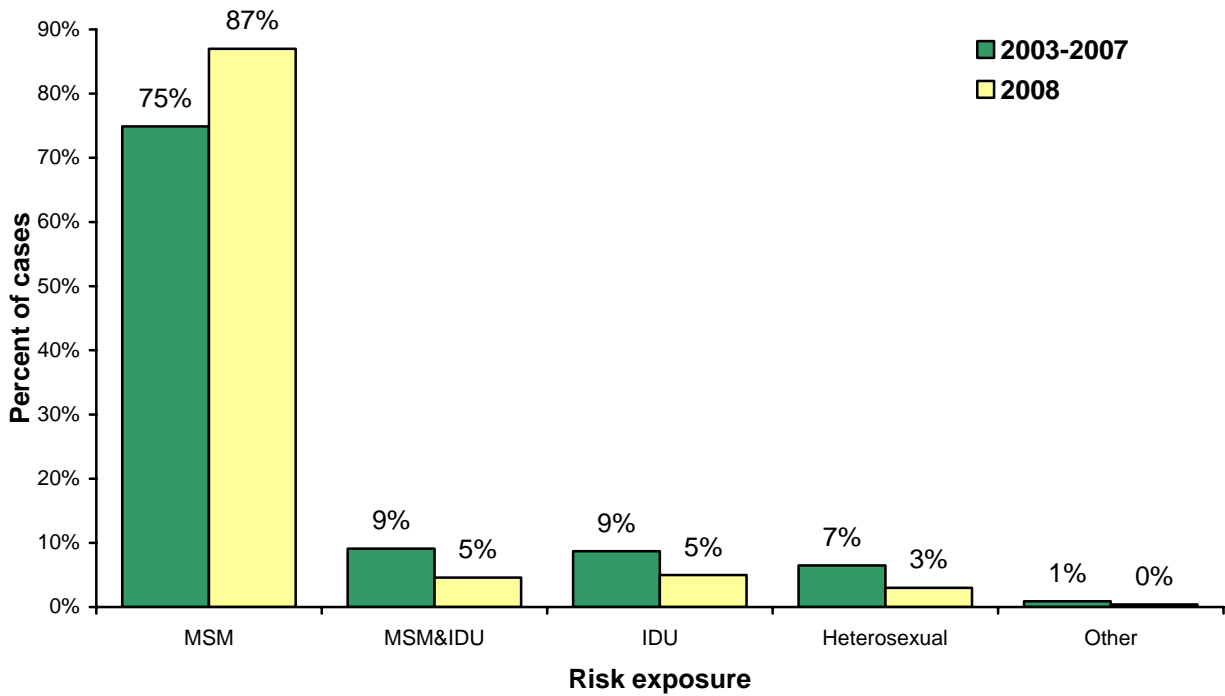
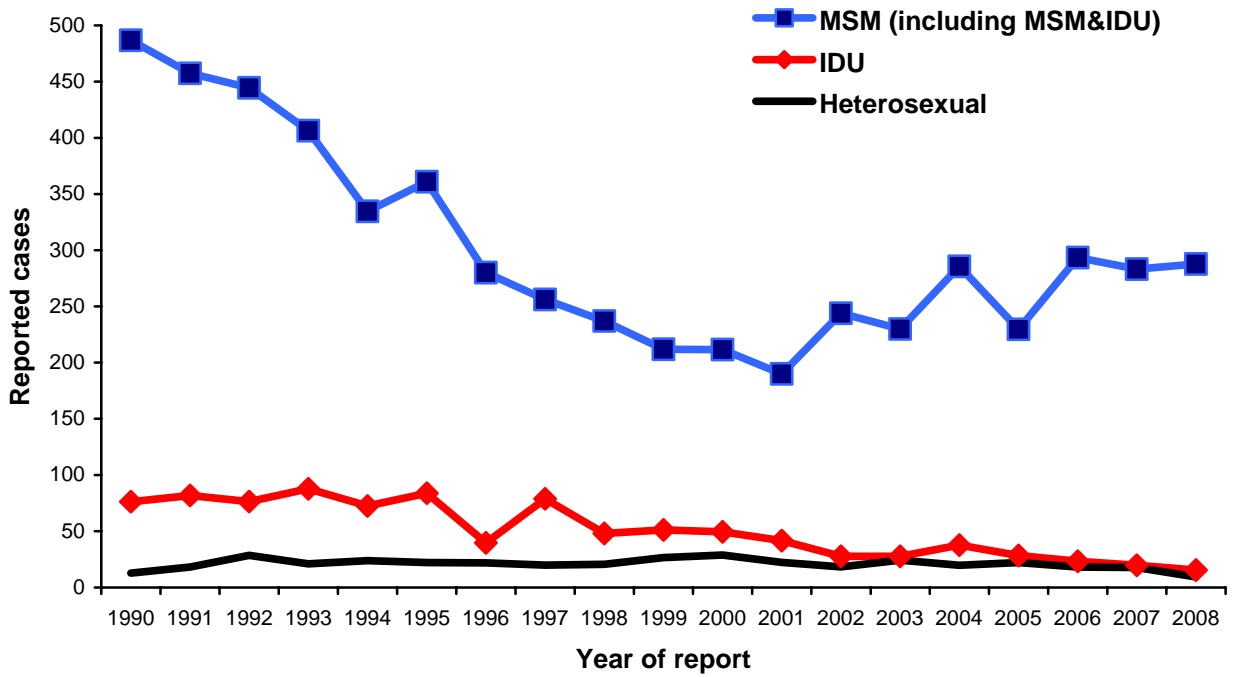


Figure 8. Estimated percentage of reported HIV infection, males by risk exposure*, Wisconsin, 2003-2007 and 2008



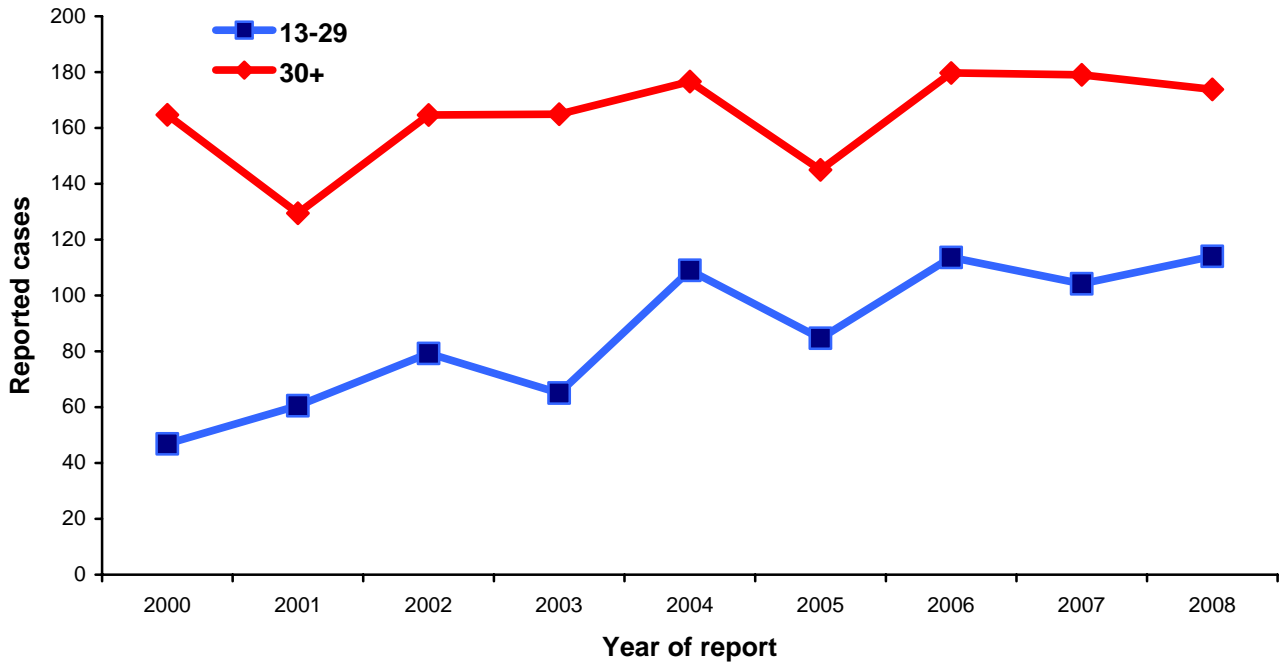
* Imputed risk exposure. See technical notes.

Figure 9. Reported cases of HIV infection, males by risk exposure* and year of report, Wisconsin, 1990-2008



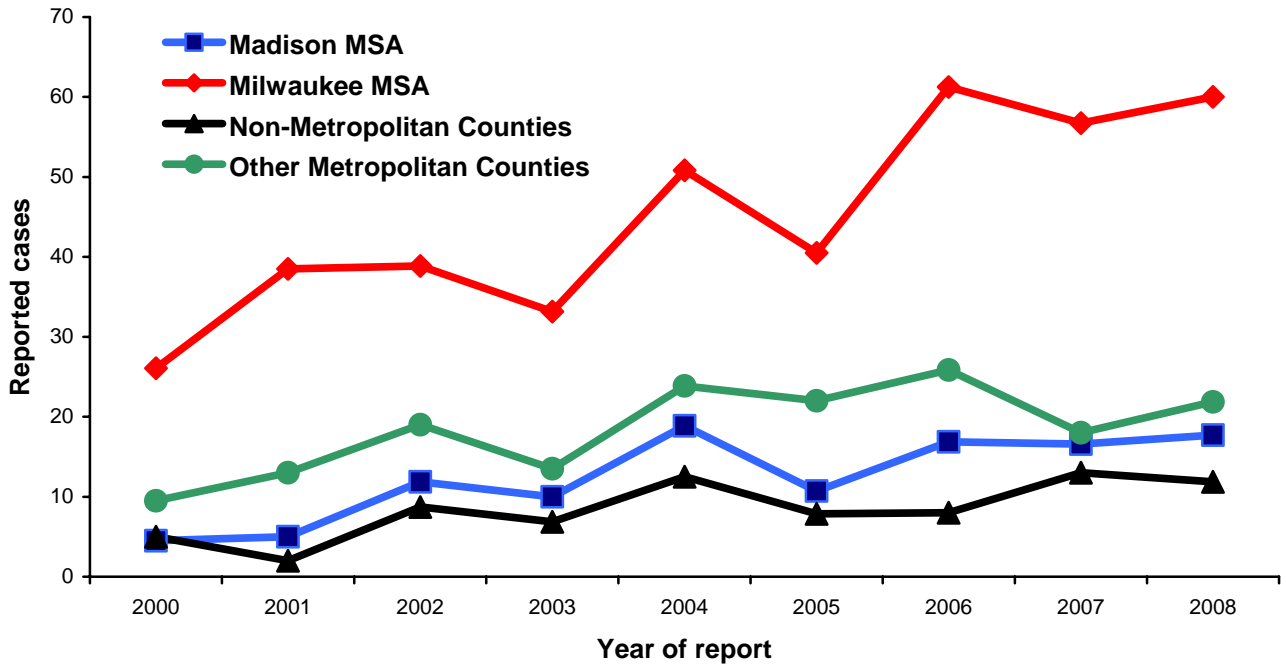
* Imputed risk exposure. See technical notes.

Figure 10. Reported cases of HIV infection, MSM* by age group and year of report, Wisconsin, 2000-2008



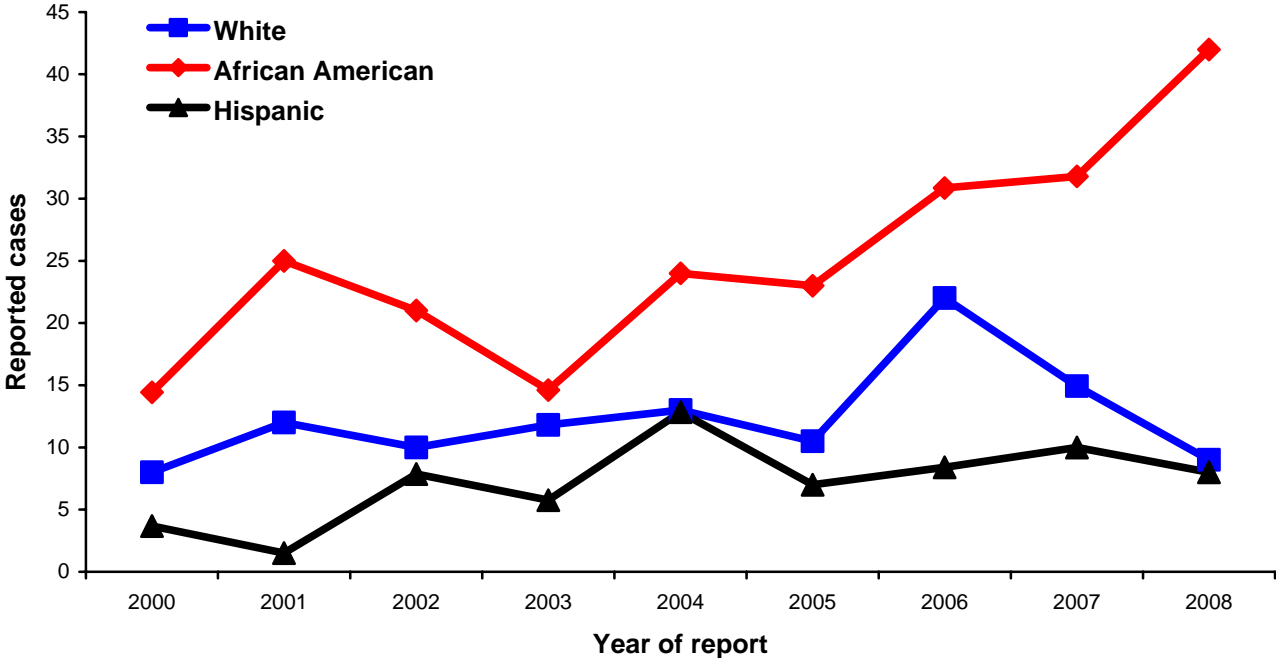
* Imputed risk exposure. See technical notes.

Figure 11. Reported cases of HIV infection, MSM* 13-29 years of age by metropolitan group and year of report, Wisconsin, 2000-2008



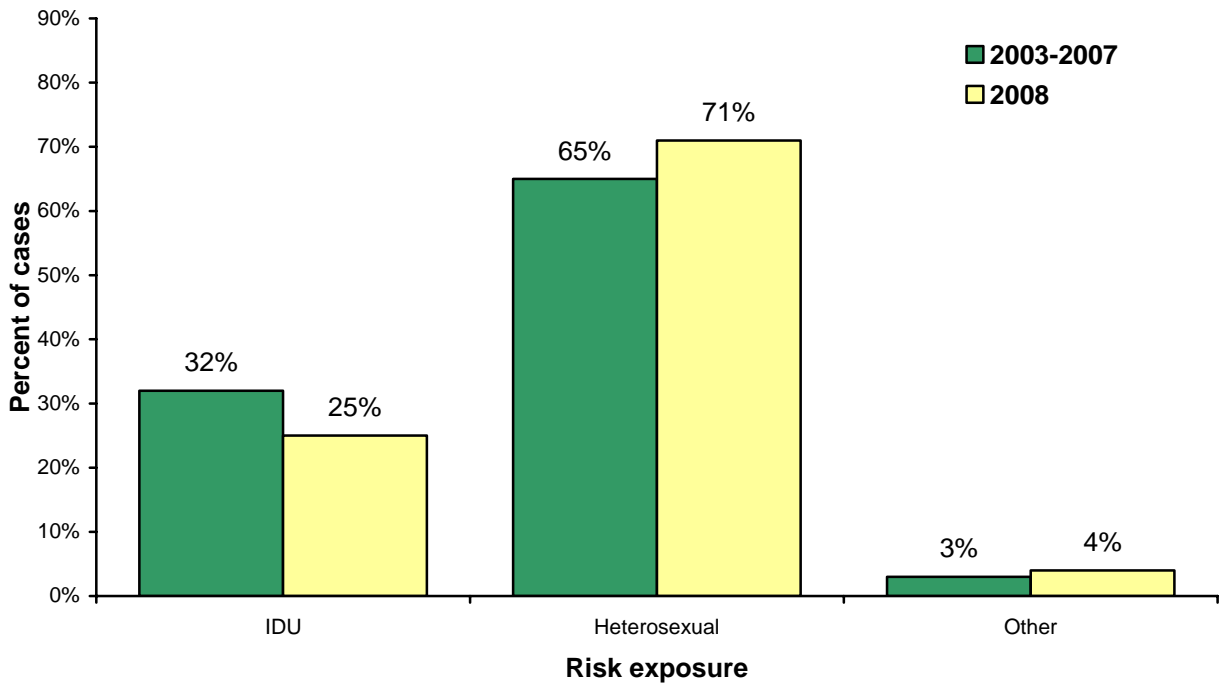
* Imputed risk exposure. See technical notes.

Figure 12. Reported cases of HIV infection, MSM* 13-29 years of age, by race/ethnicity and year of report, Milwaukee MSA, 2000-2008



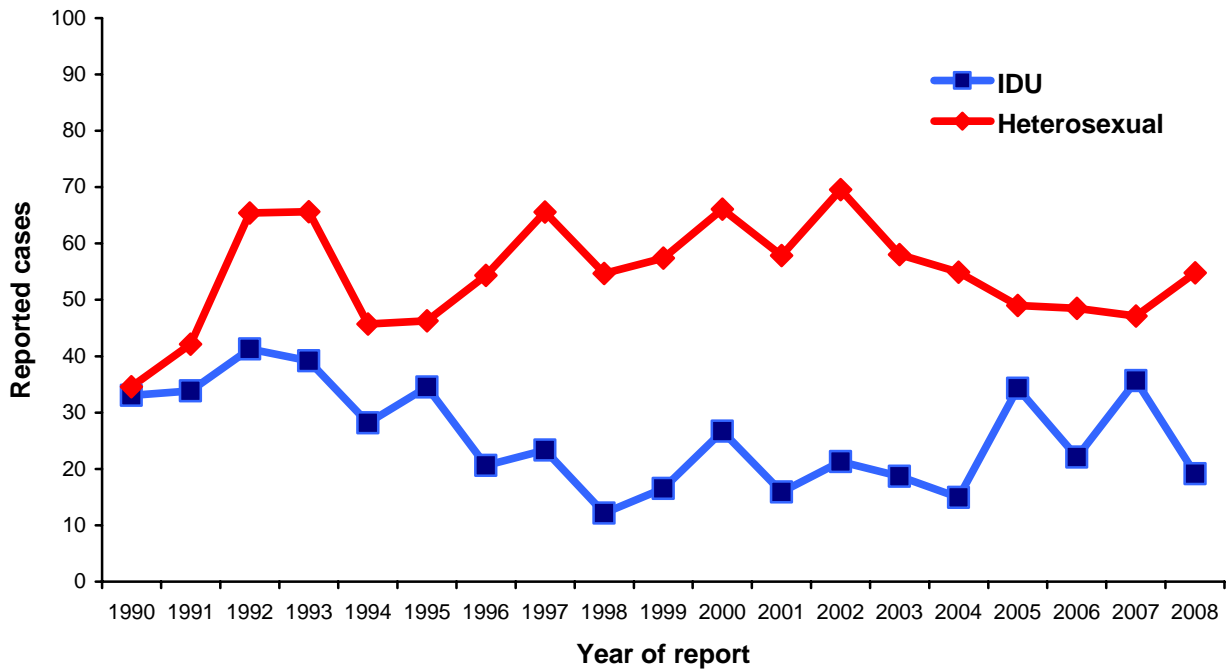
* Imputed risk exposure. See technical notes.

Figure 13. Estimated percentage of reported HIV infection, females by risk exposure*, Wisconsin, 2003-2007 and 2008



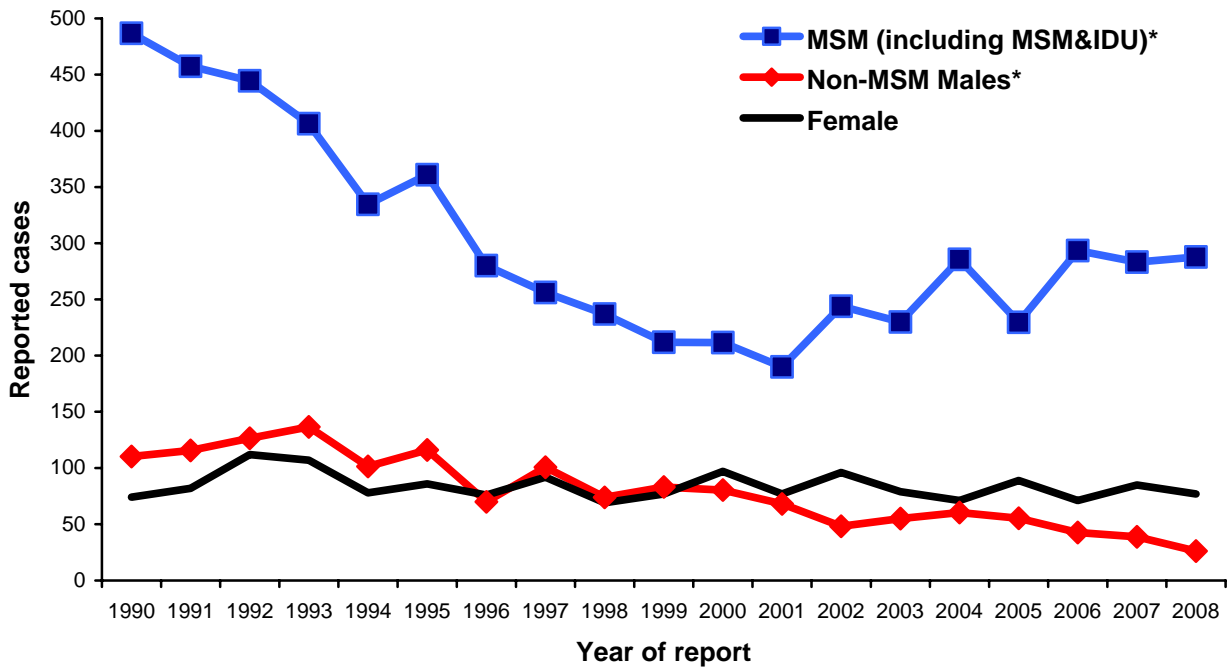
* Imputed risk exposure. See technical notes.

Figure 14. Reported cases of HIV infection, females by risk exposure* and year of report, Wisconsin, 1990-2008



* Imputed risk exposure. See technical notes.

Figure 15. Reported cases of HIV infection, MSM*, non-MSM males* and females, by year of report, Wisconsin, 1990-2008



* Imputed risk exposure. See technical notes.

**Table 4. Reported cases of HIV infection
Whites, Wisconsin, 1983-2008**

	Year of report											
	1983-2008(a)		2003-2007				2008			Presumed alive		
	Cases	%	Cases	Avg(b)	%	Rate(c)	Cases	%	Rate(c)	Cases	%	Rate(c)
Total												
Total cases(d)	5,672	100%	939	188	100%	4	176	100%	4	3,238	100%	67
Disease category												
AIDS	4,014	71%	438	88	47%	2	76	43%	2	1,751	54%	36
Non-AIDS	1,658	29%	501	100	53%	2	100	57%	2	1,487	46%	31
Sex												
Male	5,094	90%	831	166	88%	7	151	86%	6	2,848	88%	119
Female	578	10%	108	22	12%	1	25	14%	1	390	12%	16
Unknown	0	0%	0	0	0%	-	0	0%	-	0	0%	-
Age(e)												
<5	24	0%	3	1	0%	0	0	0%	0	1	0%	0
5-14	19	0%	1	0	0%	0	0	0%	0	7	0%	1
15-19	93	2%	23	5	2%	2	3	2%	1	10	0%	3
20-24	506	9%	85	17	9%	5	16	9%	5	47	1%	14
25-44	4,040	71%	606	121	65%	10	116	66%	9	1,298	40%	103
45+	990	17%	221	44	24%	2	41	23%	2	1,874	58%	91
Unknown	0	0%	0	0	0%	-	0	0%	-	1	0%	-
Risk exposure												
Men who have sex with men (MSM)	3,802	67%	612	122	65%	-	114	65%	-	2,082	64%	-
MSM and IDU	408	7%	67	13	7%	-	7	4%	-	247	8%	-
Injecting drug use (IDU)	407	7%	45	9	5%	-	4	2%	-	219	7%	-
High-risk heterosexual contact	401	7%	71	14	8%	-	10	6%	-	281	9%	-
Other	199	4%	7	1	1%	-	0	0%	-	73	2%	-
Undetermined	455	8%	137	27	15%	-	41	23%	-	336	10%	-
Year of first report	Cases	%	Rate(c)									
Cases reported before 1999	3,876	68%	-									
1999	176	3%	4									
2000	167	3%	4									
2001	146	3%	3									
2002	192	3%	4									
2003	169	3%	4									
2004	201	4%	4									
2005	171	3%	4									
2006	209	4%	4									
2007	189	3%	4									
2008	176	3%	4									

a. The first cases of HIV infection in Wisconsin were reported in 1983. Thus, these represent cumulative cases through the specified date.

b. The average annual cases in the specified period.

c. Cases per 100,000 population. Rates not available for risk exposure groups.

d. Demographic and risk exposure breakdown not shown if total is less than 5 cases.

e. Age when first diagnosed with HIV infection, except for cases presumed alive where age is age on 12/31/2008.

**Table 5. Reported cases of HIV infection
African Americans, Wisconsin, 1983-2008**

	Year of report											
	1983-2008(a)		2003-2007				2008			Presumed alive		
	Cases	%	Cases	Avg(b)	%	Rate(c)	Cases	%	Rate(c)	Cases	%	Rate(c)
Total												
Total cases(d)	3,454	100%	701	140	100%	40	152	100%	44	2,469	100%	711
Disease category												
AIDS	2,178	63%	323	65	46%	19	43	28%	12	1,281	52%	369
Non-AIDS	1,276	37%	378	76	54%	22	109	72%	31	1,188	48%	342
Sex												
Male	2,579	75%	485	97	69%	57	114	75%	67	1,783	72%	1,055
Female	875	25%	216	43	31%	24	38	25%	21	686	28%	385
Unknown	0	0%	0	0	0%	-	0	0%	-	0	0%	-
Age(e)												
<5	39	1%	8	2	1%	6	3	2%	8	2	0%	6
5-14	12	0%	2	0	0%	0	0	0%	0	18	1%	26
15-19	145	4%	36	7	5%	20	17	11%	49	27	1%	77
20-24	478	14%	114	23	16%	81	35	23%	123	100	4%	351
25-44	2,371	69%	426	85	61%	87	73	48%	75	1,192	48%	1,221
45+	409	12%	115	23	16%	28	24	16%	29	1,130	46%	1,377
Unknown	0	0%	0	0	0%	-	0	0%	-			
Risk exposure												
Men who have sex with men (MSM)	1,238	36%	228	46	33%	-	59	39%	-	848	34%	-
MSM and IDU	224	6%	30	6	4%	-	2	1%	-	137	6%	-
Injecting drug use (IDU)	740	21%	83	17	12%	-	10	7%	-	440	18%	-
High-risk heterosexual contact	591	17%	118	24	17%	-	18	12%	-	466	19%	-
Other	50	1%	8	2	1%	-	3	2%	-	38	2%	-
Undetermined	611	18%	234	47	33%	-	60	39%	-	540	22%	-
Year of first report	Cases	%	Rate(c)									
Cases reported before 1999	1,996	58%	-									
1999	155	4%	50									
2000	168	5%	53									
2001	138	4%	43									
2002	144	4%	44									
2003	134	4%	41									
2004	150	4%	45									
2005	140	4%	41									
2006	131	4%	38									
2007	146	4%	42									
2008	152	4%	44									

- a. The first cases of HIV infection in Wisconsin were reported in 1983. Thus, these represent cumulative cases through the specified date.
b. The average annual cases in the specified period.
c. Cases per 100,000 population. Rates not available for risk exposure groups.
d. Demographic and risk exposure breakdown not shown if total is less than 5 cases.
e. Age when first diagnosed with HIV infection, except for cases presumed alive where age is age on 12/31/2008.

**Table 6. Reported cases of HIV infection
Hispanics, Wisconsin, 1983-2008**

	Year of report											
	1983-2008(a)		2003-2007				2008			Presumed alive		
	Cases	%	Cases	Avg(b)	%	Rate(c)	Cases	%	Rate(c)	Cases	%	Rate(c)
Total												
Total cases(d)	983	100%	268	54	100%	20	51	100%	19	741	100%	273
Disease category												
AIDS	649	66%	141	28	53%	10	20	39%	7	425	57%	156
Non-AIDS	334	34%	127	25	47%	9	31	61%	11	316	43%	116
Sex												
Male	758	77%	214	43	80%	29	41	80%	28	559	75%	382
Female	225	23%	54	11	20%	9	10	20%	8	182	25%	145
Unknown	0	0%	0	0	0%	-	0	0%	-	0	0%	-
Age(e)												
<5	17	2%	2	0	1%	0	0	0%	0	1	0%	3
5-14	7	1%	4	1	1%	2	0	0%	0	6	1%	11
15-19	29	3%	8	2	3%	9	2	4%	9	7	1%	31
20-24	133	14%	44	9	16%	40	8	16%	36	26	4%	115
25-44	704	72%	172	34	64%	36	34	67%	36	407	55%	434
45+	93	9%	38	8	14%	18	7	14%	16	294	40%	652
Unknown	0	0%	0	0	0%	-	0	0%	-			-
Risk exposure												
Men who have sex with men (MSM)	324	33%	104	21	39%	-	25	49%	-	254	34%	-
MSM and IDU	55	6%	17	3	6%	-	0	0%	-	38	5%	-
Injecting drug use (IDU)	251	26%	36	7	13%	-	4	8%	-	151	20%	-
High-risk heterosexual contact	191	19%	47	9	18%	-	4	8%	-	154	21%	-
Other	23	2%	5	1	2%	-	0	0%	-	16	2%	-
Undetermined	139	14%	59	12	22%	-	18	35%	-	128	17%	-
Year of first report	Cases	%	Rate(c)									
Cases reported before 1999	494	50%	-									
1999	31	3%	17									
2000	44	4%	23									
2001	47	5%	23									
2002	48	5%	22									
2003	51	5%	22									
2004	54	5%	23									
2005	52	5%	21									
2006	51	5%	20									
2007	60	6%	22									
2008	51	5%	19									

a. The first cases of HIV infection in Wisconsin were reported in 1983. Thus, these represent cumulative cases through the specified date.

b. The average annual cases in the specified period.

c. Cases per 100,000 population. Rates not available for risk exposure groups.

d. Demographic and risk exposure breakdown not shown if total is less than 5 cases.

e. Age when first diagnosed with HIV infection, except for cases presumed alive where age is age on 12/31/2008.

**Table 7. Reported cases of HIV infection
American Indians, Wisconsin, 1983-2008**

	Year of report											
	1983-2008(a)		2003-2007				2008			Presumed alive		
	Cases	%	Cases	Avg(b)	%	Rate(c)	Cases	%	Rate(c)	Cases	%	Rate(c)
Total												
Total cases(d)	90	100%	16	3	100%	6	4	100%	8	50	100%	98
Disease category												
AIDS	57	63%	6	1	38%	2	-	-	-	21	42%	41
Non-AIDS	33	37%	10	2	63%	4	-	-	-	29	58%	57
Sex												
Male	58	64%	11	2	69%	8	-	-	-	31	62%	122
Female	32	36%	5	1	31%	4	-	-	-	19	38%	74
Unknown	0	0%	0	0	0%	-	-	-	-	0	0%	-
Age(e)												
<5	4	4%	0	0	0%	-	-	-	-			-
5-14	1	1%	0	0	0%	0	-	-	-	1	2%	12
15-19	2	2%	2	0	13%	0	-	-	-	1	2%	20
20-24	19	21%	5	1	31%	22	-	-	-	3	6%	67
25-44	59	66%	7	1	44%	7	-	-	-	27	54%	180
45+	5	6%	2	0	13%	0	-	-	-	18	36%	125
Unknown	0	0%	0	0	0%	-	-	-	-			-
Risk exposure												
Men who have sex with men (MSM)	24	27%	5	1	31%	-	-	-	-	14	28%	-
MSM and IDU	13	14%	3	1	19%	-	-	-	-	6	12%	-
Injecting drug use (IDU)	23	26%	4	1	25%	-	-	-	-	11	22%	-
High-risk heterosexual contact	20	22%	3	1	19%	-	-	-	-	12	24%	-
Other	6	7%	0	0	0%	-	-	-	-	4	8%	-
Undetermined	4	4%	1	0	6%	-	-	-	-	3	6%	-
Year of first report	Cases	%	Rate(c)									
Cases reported before 1999	58	64%	-									
1999	4	4%	9									
2000	5	6%	11									
2001	2	2%	4									
2002	1	1%	2									
2003	5	6%	10									
2004	4	4%	8									
2005	3	3%	6									
2006	4	4%	8									
2007	0	0%	0									
2008	4	4%	8									

a. The first cases of HIV infection in Wisconsin were reported in 1983. Thus, these represent cumulative cases through the specified date.

b. The average annual cases in the specified period.

c. Cases per 100,000 population. Rates not available for risk exposure groups.

d. Demographic and risk exposure breakdown not shown if total is less than 5 cases.

e. Age when first diagnosed with HIV infection, except for cases presumed alive where age is age on 12/31/2008.

**Table 8. Reported cases of HIV infection
Asian/Pacific Islanders, Wisconsin, 1983-2008**

	Year of report											
	1983-2008(a)		2003-2007				2008			Presumed alive		
	Cases	%	Cases	Avg(b)	%	Rate(c)	Cases	%	Rate(c)	Cases	%	Rate(c)
Total												
Total cases(d)	71	100%	30	6	100%	5	4	100%	3	59	100%	50
Disease category												
AIDS	39	55%	15	3	50%	3	-	-	-	27	46%	23
Non-AIDS	32	45%	15	3	50%	3	-	-	-	32	54%	27
Sex												
Male	52	73%	20	4	67%	7	-	-	-	40	68%	67
Female	19	27%	10	2	33%	3	-	-	-	19	32%	32
Unknown	0	0%	0	0	0%	-	-	-	-	0	0%	-
Age(e)												
<5	2	3%	2	0	7%	0	-	-	-	1	2%	9
5-14	1	1%	1	0	3%	0	-	-	-	1	2%	4
15-19												
20-24	13	18%	6	1	20%	10	-	-	-	2	3%	21
25-44	45	63%	15	3	50%	7	-	-	-	30	51%	72
45+	10	14%	6	1	20%	4	-	-	-	24	41%	106
Unknown	0	0%	0	0	0%	-	-	-	-			
Risk exposure												
Men who have sex with men (MSM)	25	35%	9	2	30%	-	-	-	-	20	34%	-
MSM and IDU	1	1%	1	0	3%	-	-	-	-	1	2%	-
Injecting drug use (IDU)	3	4%	2	0	7%	-	-	-	-	3	5%	-
High-risk heterosexual contact	15	21%	7	1	23%	-	-	-	-	14	24%	-
Other	2	3%	1	0	3%	-	-	-	-	1	2%	-
Undetermined	25	35%	10	2	33%	-	-	-	-	20	34%	-
Year of first report	Cases	%	Rate(c)									
Cases reported before 1999	28	39%	-									
1999	2	3%	2									
2000	4	6%	4									
2001	1	1%	1									
2002	2	3%	2									
2003	3	4%	3									
2004	4	6%	4									
2005	5	7%	4									
2006	10	14%	9									
2007	8	11%	7									
2008	4	6%	3									

- a. The first cases of HIV infection in Wisconsin were reported in 1983. Thus, these represent cumulative cases through the specified date.
- b. The average annual cases in the specified period.
- c. Cases per 100,000 population. Rates not available for risk exposure groups.
- d. Demographic and risk exposure breakdown not shown if total is less than 5 cases.
- e. Age when first diagnosed with HIV infection, except for cases presumed alive where age is age on 12/31/2008.

Figure 16. Reported cases of HIV infection by race/ethnicity and year of report, Wisconsin, 1990-2008

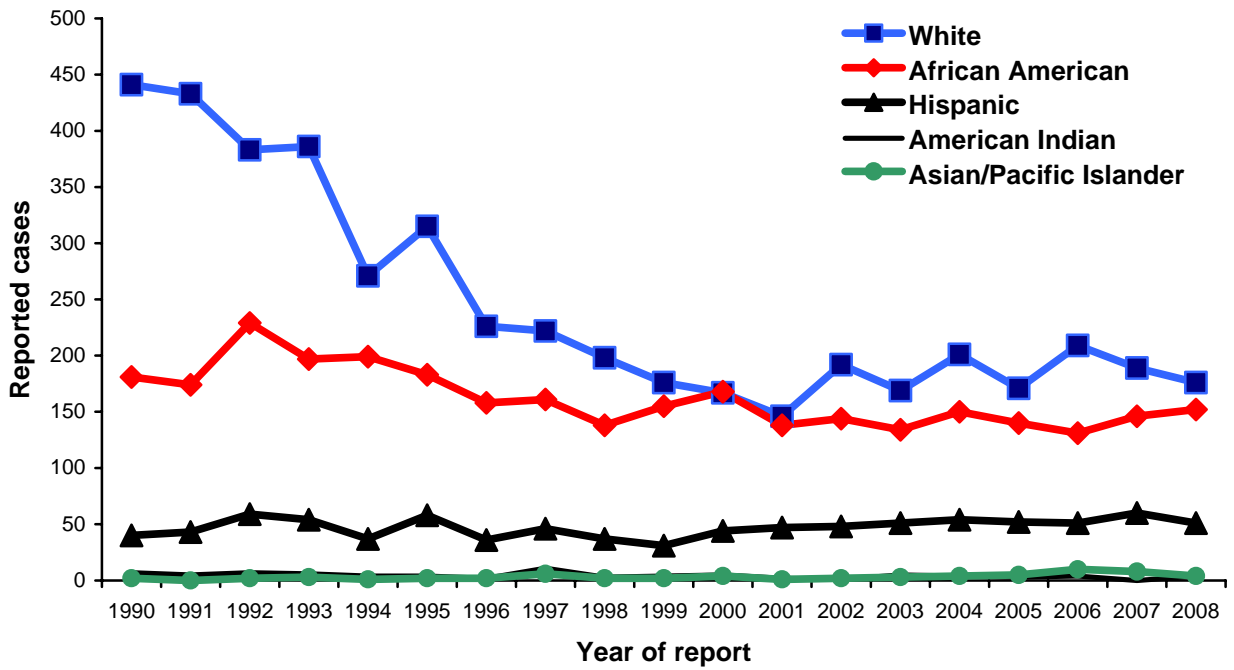


Figure 17. Reported cases of HIV infection per 100,000 population by race/ethnicity and year of report, Wisconsin, 1990-2008

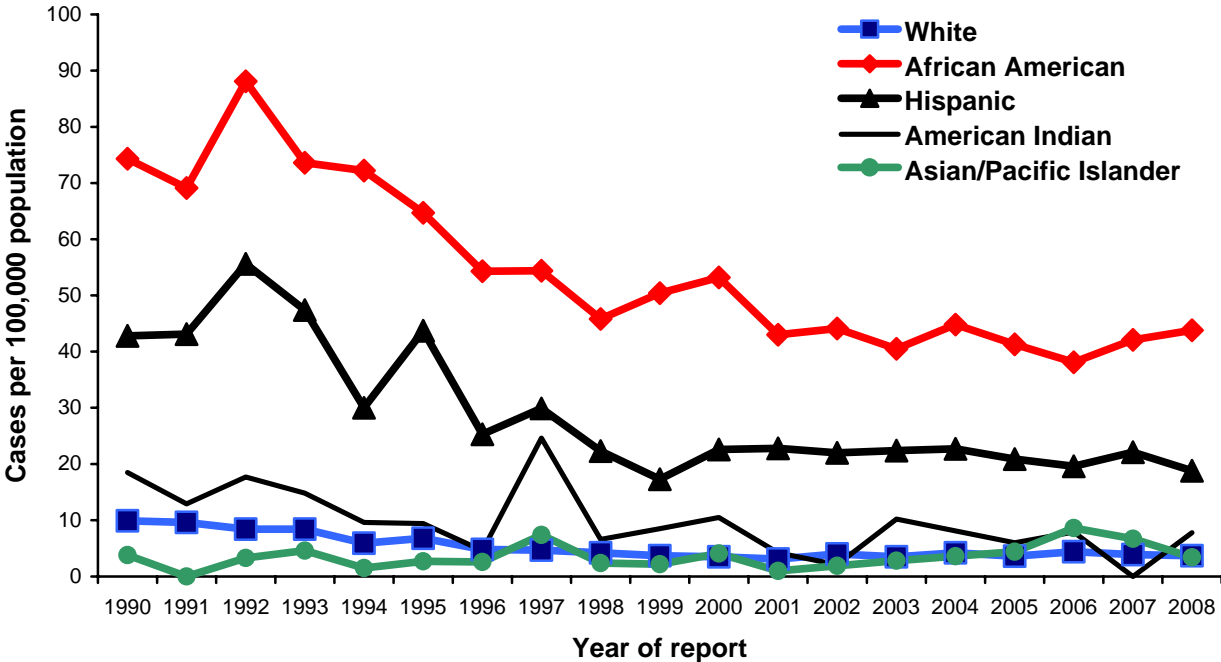


Figure 18. Percentage of reported HIV infection by race/ethnicity Wisconsin, 2003-2007 and 2008

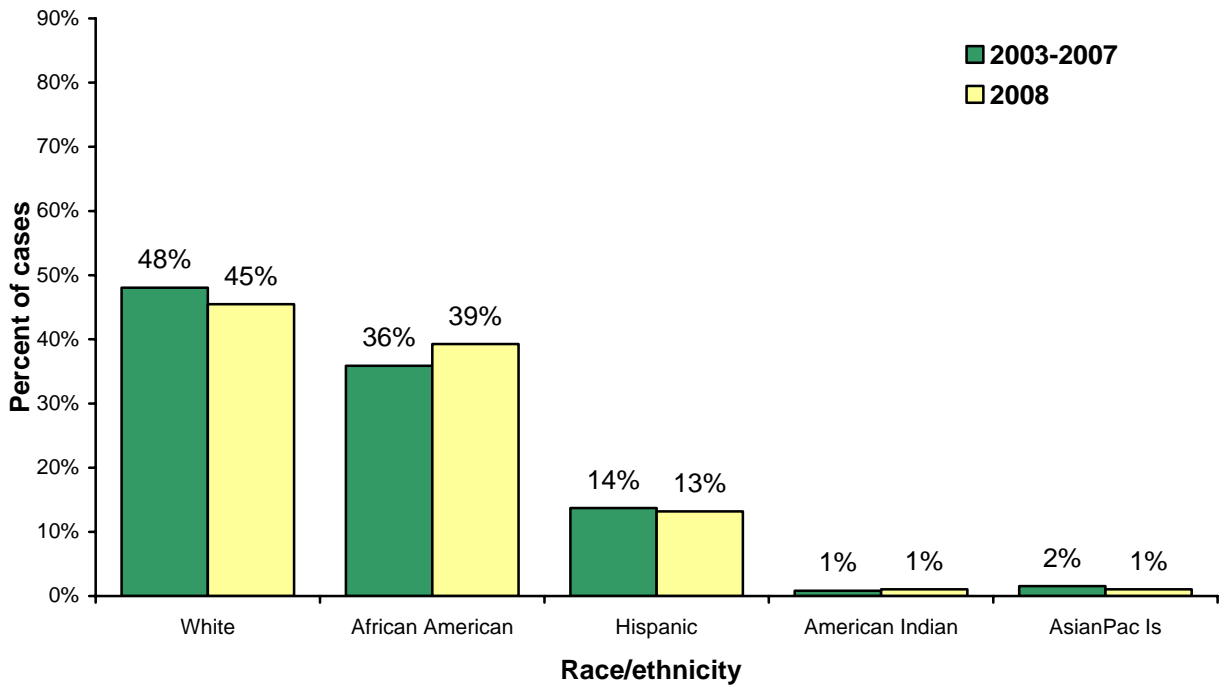


Figure 19. Reported HIV infection per 100,000 population by race/ethnicity, Wisconsin, 2003-2007 and 2008

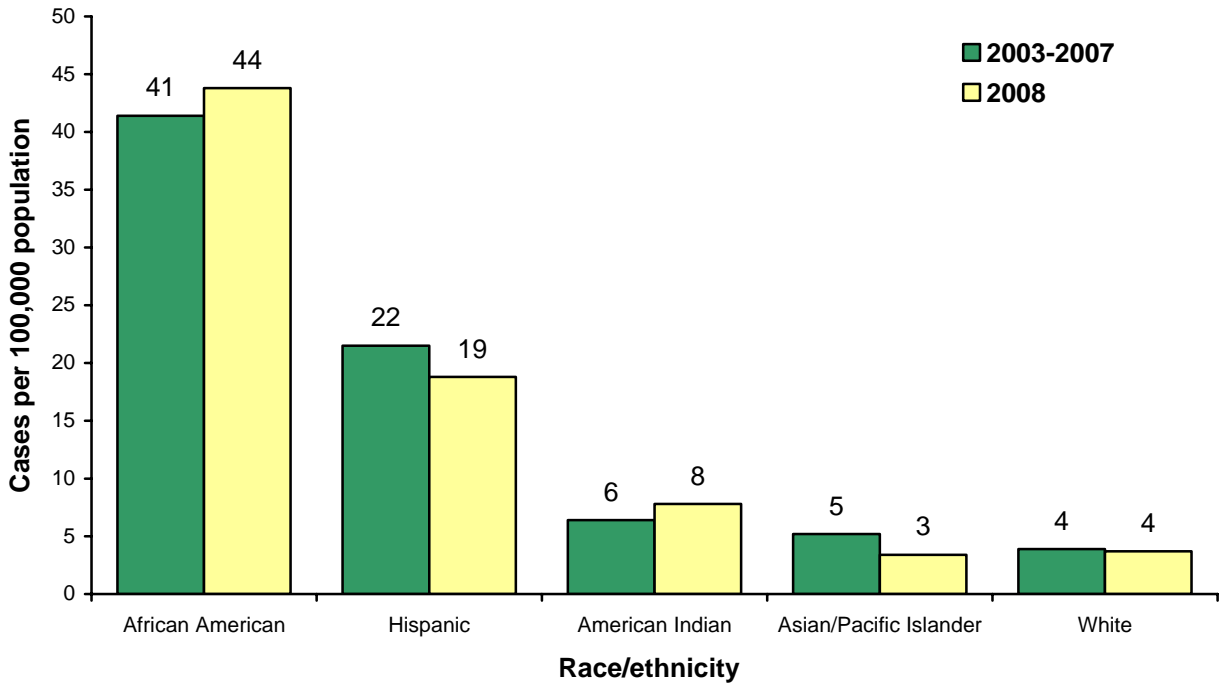


Figure 20. Reported cases of HIV infection among males by race/ethnicity and year of report, Wisconsin, 1990-2008

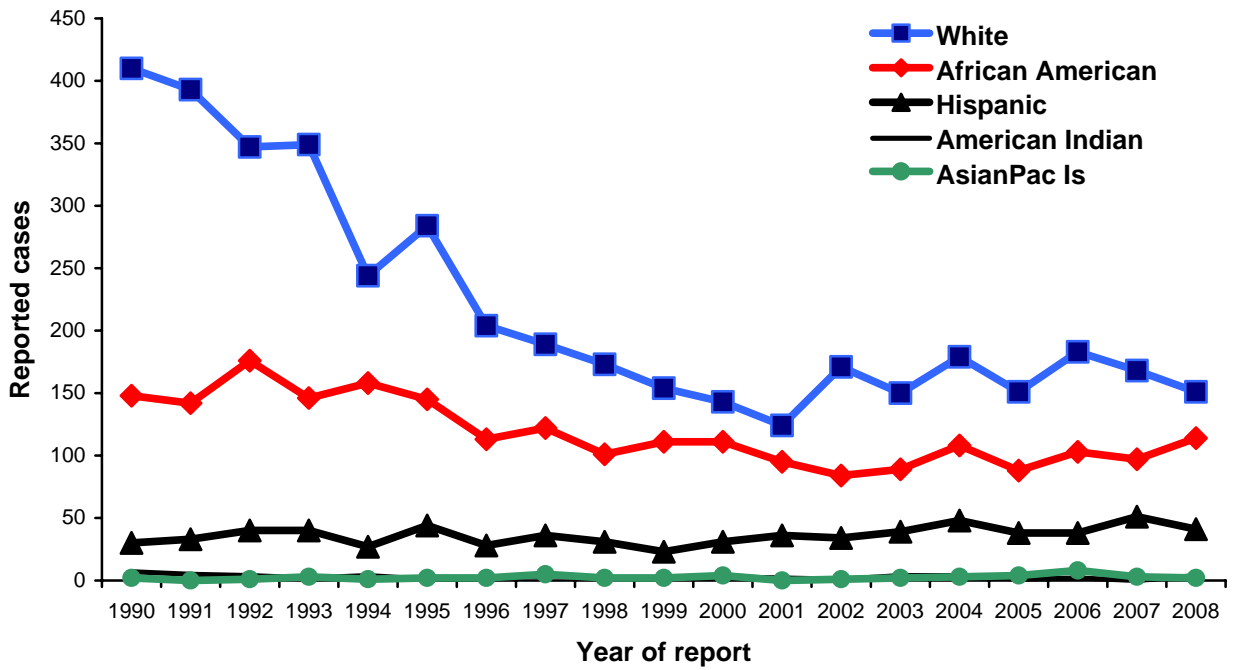


Figure 21. Reported cases of HIV infection per 100,000 population, males by race/ethnicity and year of report, Wisconsin, 1990-2008

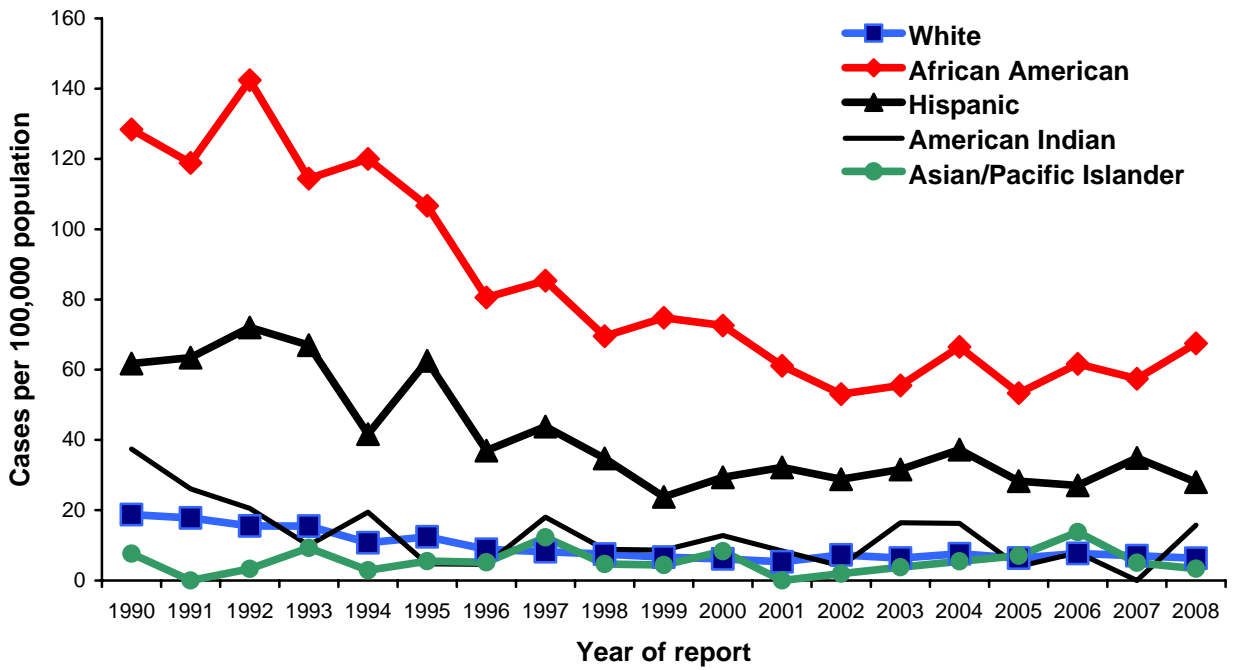


Figure 22. Percentage of reported HIV infection, males by race/ethnicity, Wisconsin, 2003-2007 and 2008

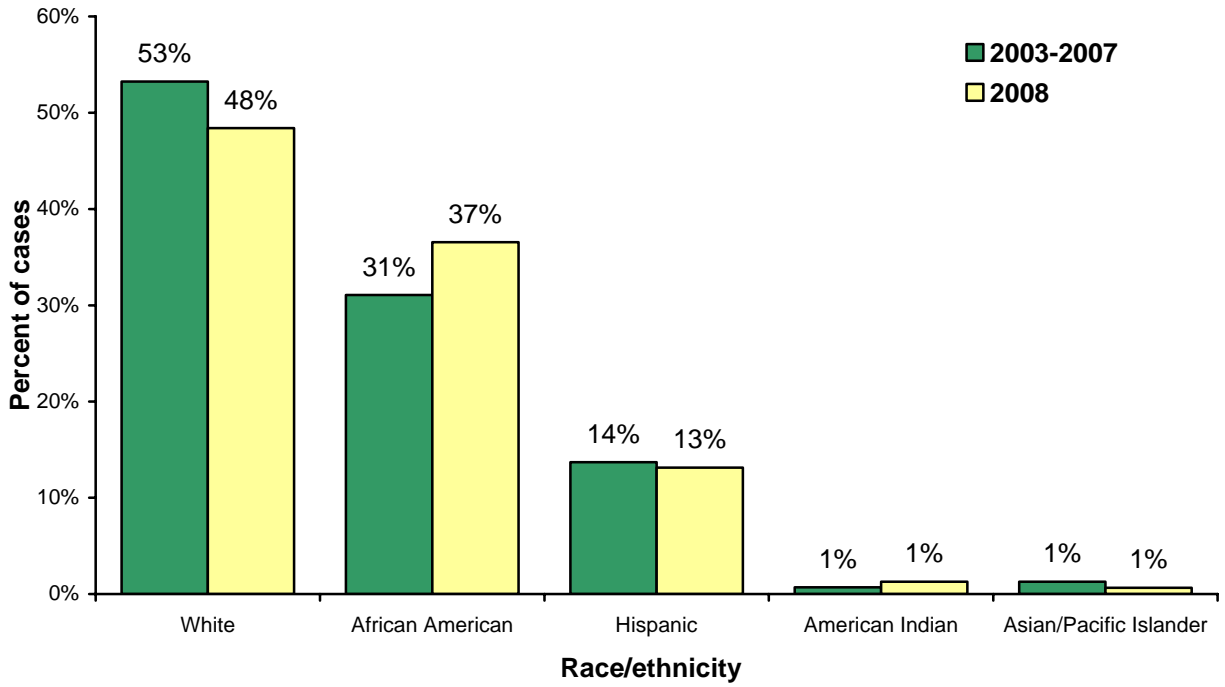


Figure 23. Reported HIV infection per 100,000 population, males by race/ethnicity, Wisconsin, 2003-2007 and 2008

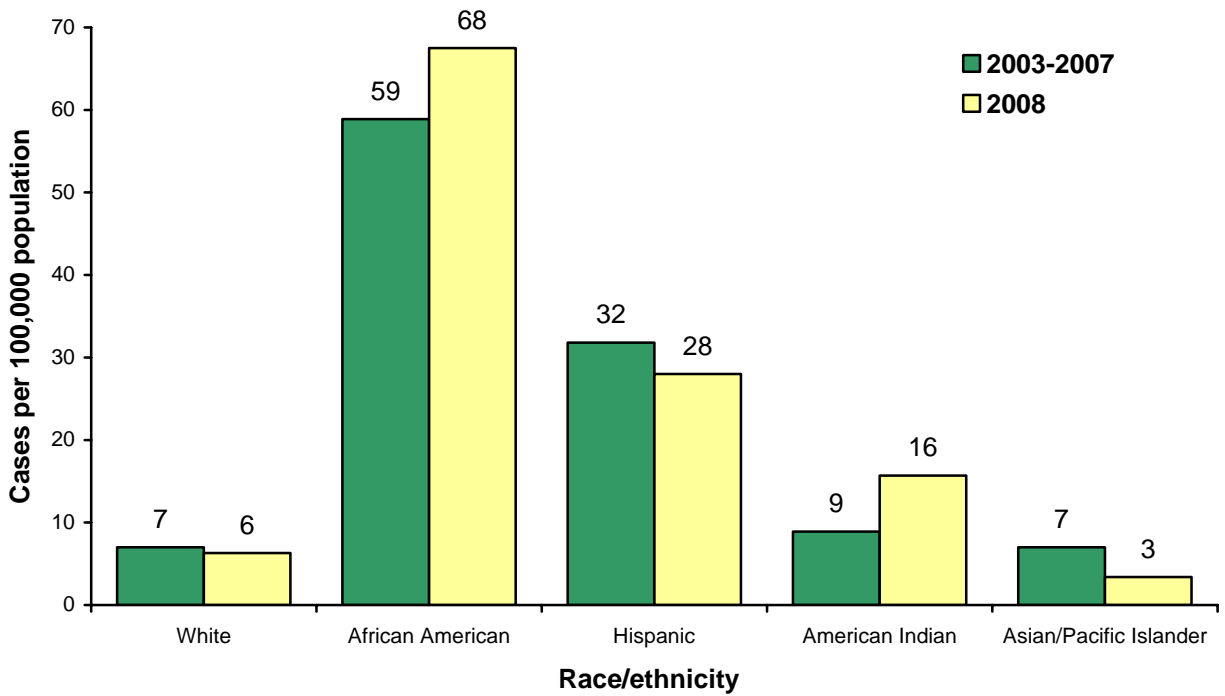


Figure 24. Reported cases of HIV infection among females by race/ethnicity and year of report, Wisconsin, 1990-2008

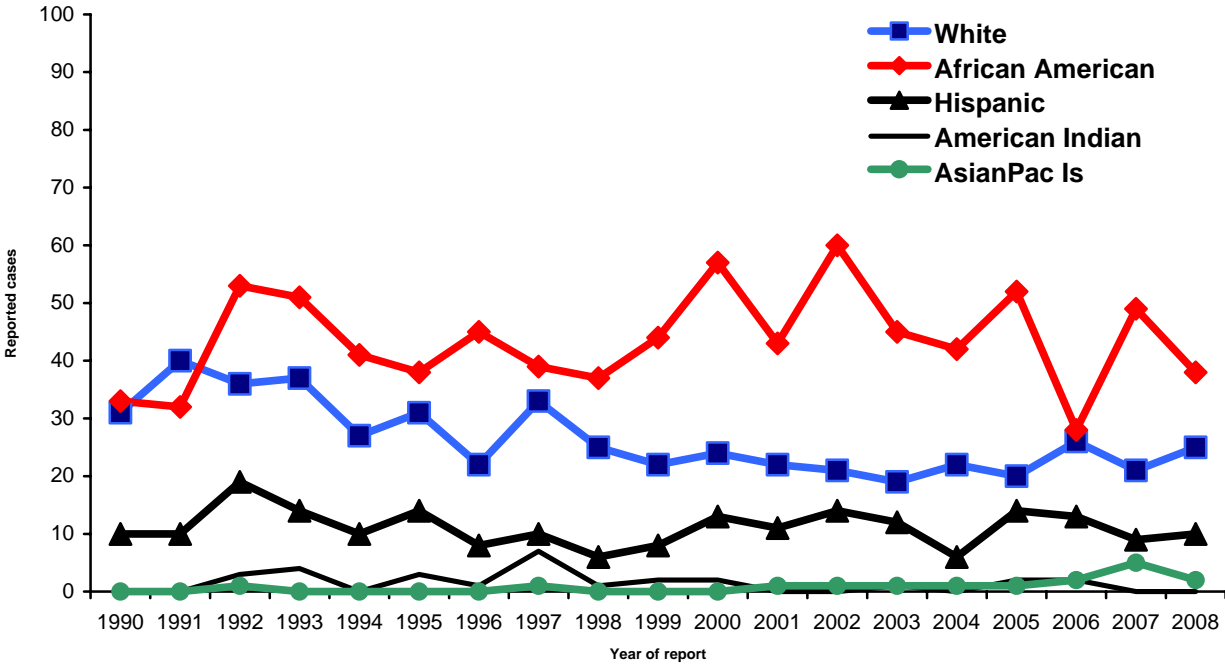


Figure 25. Reported cases of HIV infection per 100,000 population, females by race/ethnicity and year of report, Wisconsin, 1990-2008

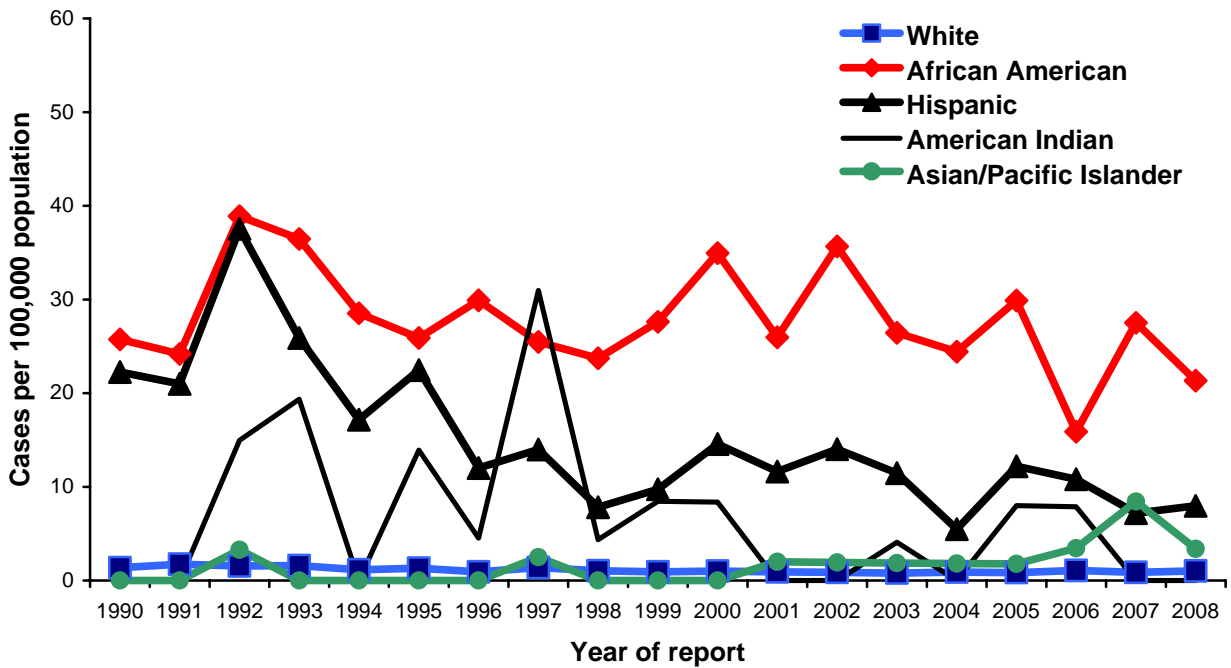


Figure 26. Percentage of reported HIV infection, females by race/ethnicity, Wisconsin, 2003-2007 and 2008

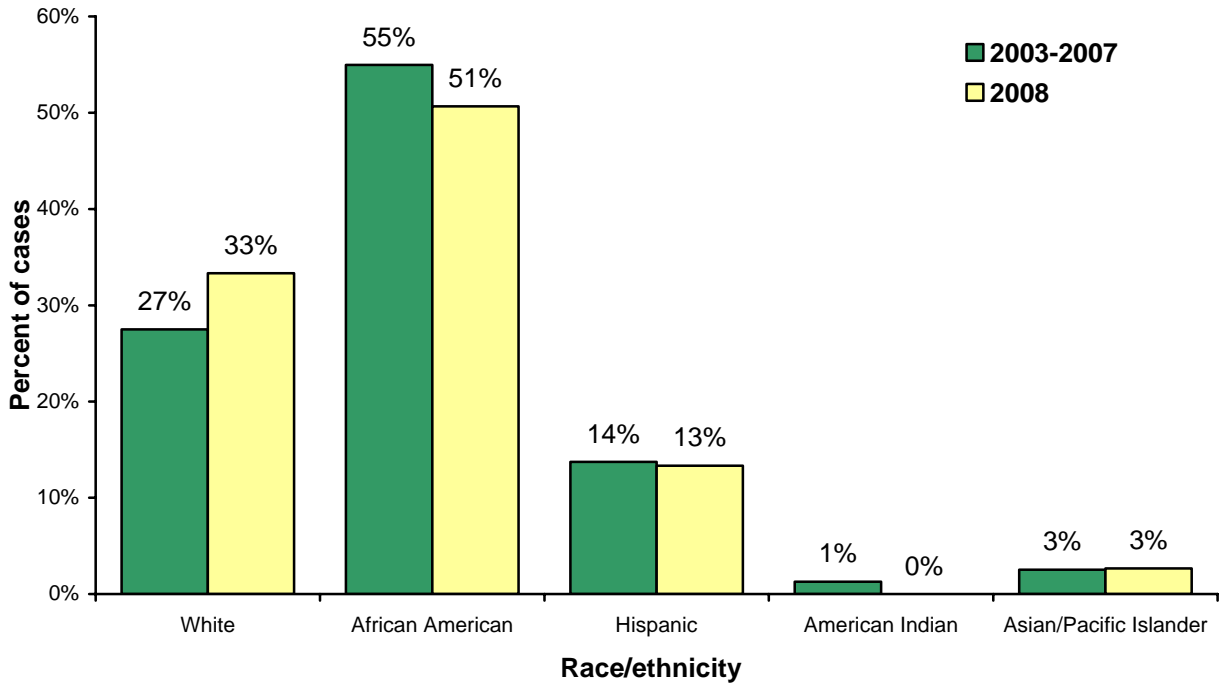
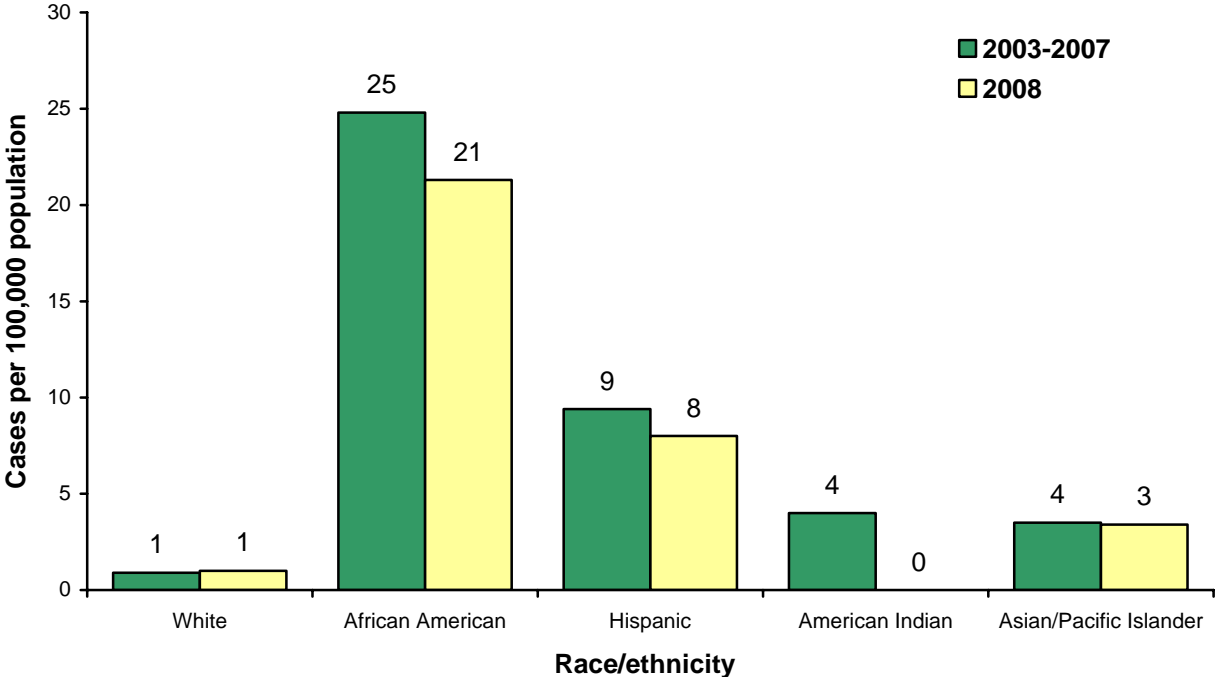


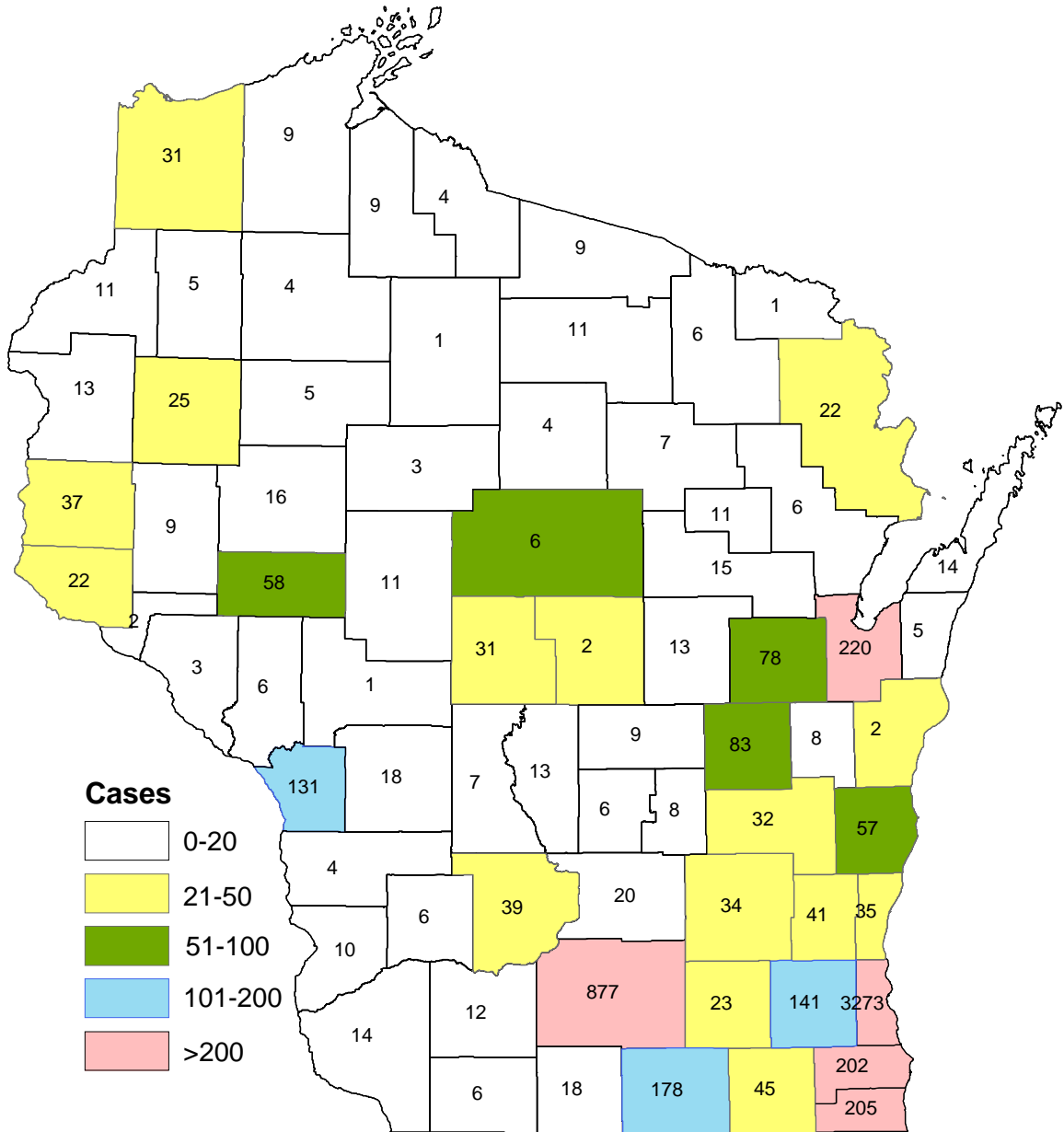
Figure 27. Reported HIV infection per 100,000 population, females by race/ethnicity, Wisconsin, 2003-2007 and 2008



**Table 9. Reported cases of HIV infection by region
Wisconsin, 1983-2008**

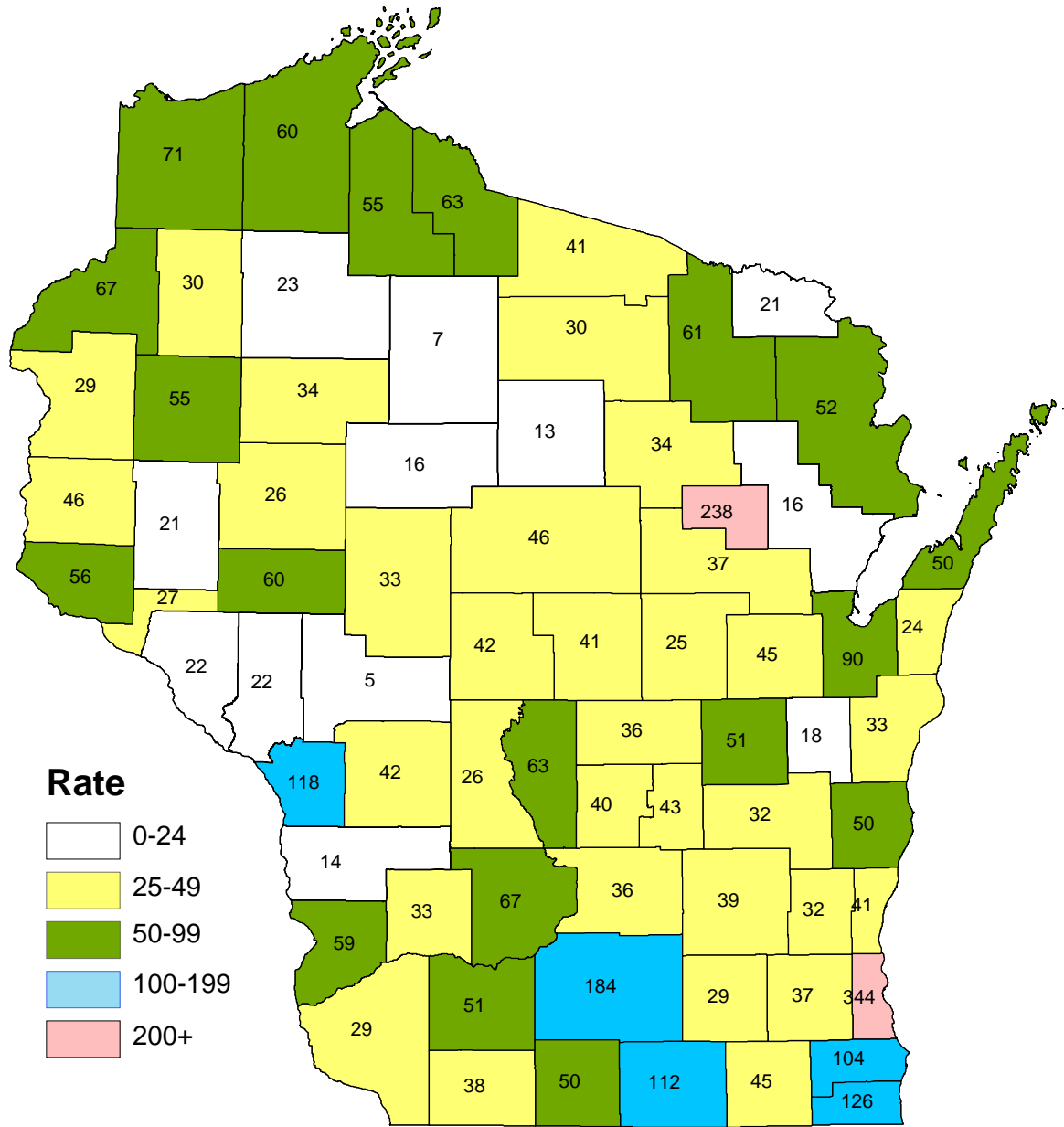
Region	Year of report											
	1983-2008(a)		2003-2007				2008			Presumed alive		
	Cases	%	Cases	Avg(b)	%	Rate(c)	Cases	%	Rate(c)	Cases	%	Rate(c)
Northeastern	998	10%	213	42.6	11%	4	39	10%	3	614	9%	51
Northern	326	3%	66	13.2	3%	3	11	3%	2	187	3%	39
Southeastern	6,230	60%	1,101	220.2	56%	11	232	59%	11	3965	60%	190
Southern	1,859	18%	398	79.6	20%	8	74	19%	7	1234	19%	118
Western	650	6%	149	29.8	8%	4	30	8%	4	408	6%	52
Other	253	2%	42	8.4	2%	-	5	1%	-	190	3%	-
State total	10,316	100%	1,969	393.8	100%	7	391	100%	7	6,598	100%	118

Figure 29. Reported cases of HIV infection reported, presumed alive by county*, Wisconsin, December 31, 2008



* Excluding cases reported from State and Federal Correctional institutions.

Figure 30. Reported cases of HIV infection reported, presumed alive per 100,000 population, by county*, Wisconsin, December 31, 2008



* Excluding cases reported from State and Federal Correctional institutions.

**Table 10. Reported cases of HIV infection
Northeastern Region Wisconsin, 1983-2008**

	Year of report											
	1983-2008(a)		2003-2007				2008			Presumed alive		
	Cases	%	Cases	Avg(b)	%	Rate(c)	Cases	%	Rate(c)	Cases	%	Rate(c)
Total												
Total cases(d)	998	100%	213	43	100%	4	39	100%	3	614	100%	51
Disease category												
AIDS	691	69%	114	23	54%	2	16	41%	1	333	54%	28
Non-AIDS	307	31%	99	20	46%	2	23	59%	2	281	46%	23
Sex												
Male	847	85%	171	34	80%	6	29	74%	5	502	82%	83
Female	151	15%	42	8	20%	1	10	26%	2	112	18%	19
Unknown	0	0%	0	0	0%	-	0	0%	-	0	0%	-
Race/Ethnicity												
White	798	80%	145	29	68%	3	27	69%	2	464	76%	42
African American	77	8%	26	5	12%	34	8	21%	55	59	10%	405
Hispanic	74	7%	28	6	13%	15	4	10%	10	57	9%	141
American Indian	32	3%	4	1	2%	6	0	0%	0	21	3%	116
Asian/Pacific Islander	12	1%	7	1	3%	4	0	0%	0	10	2%	44
Multi-racial	4	0%	3	1	1%	-	0	0%	-	3	0%	-
Unknown	1	0%	0	0	0%	-	0	0%	-	0	0%	-
Age(e)												
<5	13	1%	3	1	1%	1	0	0%	0	2	0%	3
5-14	4	0%	1	0	0%	0	0	0%	0	6	1%	4
15-19	19	2%	3	1	1%	1	1	3%	1	5	1%	6
20-24	114	11%	29	6	14%	8	6	15%	8	12	2%	15
25-44	672	67%	132	26	62%	8	22	56%	7	277	45%	85
45+	176	18%	45	9	21%	2	10	26%	2	312	51%	64
Unknown	0	0%	0	0	0%	-	0	0%	-	0	0%	-
Risk exposure												
Men who have sex with men (MSM)	575	58%	122	24	57%	-	16	41%	-	326	53%	-
MSM and IDU	62	6%	10	2	5%	-	4	10%	-	42	7%	-
Injecting drug use (IDU)	90	9%	15	3	7%	-	1	3%	-	55	9%	-
High-risk heterosexual contact	115	12%	28	6	13%	-	4	10%	-	78	13%	-
Other	49	5%	3	1	1%	-	0	0%	-	25	4%	-
Undetermined	107	11%	35	7	16%	-	14	36%	-	88	14%	-
Year of first report	Cases	%	Rate(c)									
Cases reported before 1999	608	61%	-									
1999	27	3%	2									
2000	42	4%	4									
2001	29	3%	2									
2002	40	4%	3									
2003	31	3%	3									
2004	42	4%	4									
2005	47	5%	4									
2006	36	4%	3									
2007	57	6%	5									
2008	39	4%	3									

- a. The first cases of HIV infection in Wisconsin were reported in 1983. Thus, these represent cumulative cases through the specified date.
- b. The average annual cases in the specified period.
- c. Cases per 100,000 population. Rates not available for risk exposure groups.
- d. Demographic and risk exposure breakdown not shown if total is less than 5 cases.
- e. Age when first diagnosed with HIV infection, except for cases presumed alive where age is age on 12/31/2008.

**Table 11. Reported cases of HIV infection by county
Northeastern Region, Wisconsin, 1983-2008**

County	Year of report											
	1983-2008(a)		2003-2007				2008			Presumed alive		
	Cases	%	Cases	Avg(b)	%	Rate(c)	Cases	%	Rate(c)	Cases	%	Rate(c)
Brown	348	35%	66	13.2	31%	5	14	36%	6	220	36%	90
Calumet	12	1%	4	0.8	2%	2	0	0%	0	8	1%	18
Door	22	2%	7	1.4	3%	5	1	3%	4	14	2%	50
Fond du lac	51	5%	11	2.2	5%	2	2	5%	2	32	5%	32
Green Lake	9	1%	4	0.8	2%	4	0	0%	0	8	1%	43
Kewaunee	7	1%	2	0.4	1%	2	1	3%	5	5	1%	24
Manitowoc	45	5%	11	2.2	5%	3	1	3%	1	27	4%	33
Marinette	37	4%	7	1.4	3%	3	1	3%	2	22	4%	52
Marquette	10	1%	0	0.0	0%	0	0	0%	0	6	1%	40
Menominee	17	2%	3	0.6	1%	13	0	0%	0	11	2%	238
Oconto	18	2%	0	0.0	0%	0	2	5%	5	6	1%	16
Outagamie	122	12%	33	6.6	15%	4	3	8%	2	78	13%	45
Shawano	30	3%	5	1.0	2%	2	1	3%	2	15	2%	37
Sheboygan	88	9%	25	5.0	12%	4	4	10%	3	57	9%	50
Waupaca	18	2%	7	1.4	3%	3	1	3%	2	13	2%	25
Waushara	12	1%	7	1.4	3%	6	0	0%	0	9	1%	36
Winnebago	152	15%	21	4.2	10%	3	8	21%	5	83	14%	51
Total	998	100%	213	42.6	100%	4	39	100%	3	614	100%	51

**Table 12. Reported cases of HIV infection
Northern Region, Wisconsin, 1983-2008**

	Year of report											
	1983-2008(a)		2003-2007				2008			Presumed alive		
	Cases	%	Cases	Avg(b)	%	Rate(c)	Cases	%	Rate(c)	Cases	%	Rate(c)
Total												
Total cases(d)	326	100%	66	13	100%	3	11	100%	2	187	100%	39
Disease category												
AIDS	219	67%	26	5	39%	1	6	55%	1	87	47%	18
Non-AIDS	107	33%	40	8	61%	2	5	45%	1	100	53%	21
Sex												
Male	275	84%	56	11	85%	5	11	100%	5	150	80%	62
Female	51	16%	10	2	15%	1	0	0%	0	37	20%	15
Unknown	0	0%	0	0	0%	-	0	0%	-	0	0%	-
Race/Ethnicity												
White	276	85%	50	10	76%	2	6	55%	1	152	81%	34
African American	21	6%	6	1	9%	37	3	27%	111	20	11%	737
Hispanic	10	3%	5	1	8%	17	1	9%	17	6	3%	99
American Indian	14	4%	2	0	3%	0	1	9%	9	5	3%	44
Asian/Pacific Islander	2	1%	2	0	3%	0	0	0%	0	1	1%	10
Multi-racial	3	1%	1	0	2%	-	0	0%	-	3	2%	-
Unknown	0	0%	0	0	0%	-	0	0%	-	0	0%	-
Age(e)												
<5	3	1%	0	0	0%	-	0	0%	-			-
5-14	2	1%	0	0	0%	0	0	0%	0	2	1%	3
15-19	12	4%	0	0	0%	0	1	9%	3	1	1%	3
20-24	35	11%	8	2	12%	6	1	9%	3	2	1%	6
25-44	218	67%	45	9	68%	8	6	55%	5	75	40%	63
45+	56	17%	13	3	20%	1	3	27%	1	107	57%	50
Unknown	0	0%	0	0	0%	-	0	0%	-			-
Risk exposure												
Men who have sex with men (MSM)	171	52%	35	7	53%	-	8	73%	-	91	49%	-
MSM and IDU	29	9%	10	2	15%	-	0	0%	-	19	10%	-
Injecting drug use (IDU)	38	12%	3	1	5%	-	1	9%	-	20	11%	-
High-risk heterosexual contact	29	9%	7	1	11%	-	0	0%	-	25	13%	-
Other	19	6%	0	0	0%	-	0	0%	-	4	2%	-
Undetermined	40	12%	11	2	17%	-	2	18%	-	28	15%	-
Year of first report	Cases	%	Rate(c)									
Cases reported before 1999	204	63%	-									
1999	10	3%	2									
2000	12	4%	2									
2001	11	3%	2									
2002	12	4%	2									
2003	17	5%	4									
2004	17	5%	4									
2005	13	4%	3									
2006	9	3%	2									
2007	10	3%	2									
2008	11	3%	2									

a. The first cases of HIV infection in Wisconsin were reported in 1983. Thus, these represent cumulative cases through the specified date.
b. The average annual cases in the specified period.
c. Cases per 100,000 population. Rates not available for risk exposure groups.
d. Demographic and risk exposure breakdown not shown if total is less than 5 cases.
e. Age when first diagnosed with HIV infection, except for cases presumed alive where age is age on 12/31/2008.

**Table 13. Reported cases of HIV infection by county
Northern Region, Wisconsin, 1983-2008**

County	Year of report											
	1983-2008(a)		2003-2007				2008			Presumed alive		
	Cases	%	Cases	Avg(b)	%	Rate(c)	Cases	%	Rate(c)	Cases	%	Rate(c)
Ashland	13	4%	5	1.0	8%	6	1	9%	6	9	5%	55
Bayfield	12	4%	2	0.4	3%	3	0	0%	0	9	5%	60
Florence	1	0%	0	0.0	0%	0	0	0%	0	1	1%	21
Forest	9	3%	0	0.0	0%	0	1	9%	10	6	3%	61
Iron	10	3%	2	0.4	3%	6	0	0%	0	4	2%	63
Langlade	10	3%	4	0.8	6%	4	0	0%	0	7	4%	34
Lincoln	9	3%	0	0.0	0%	0	2	18%	7	4	2%	13
Marathon	95	29%	20	4.0	30%	3	4	36%	3	60	32%	46
Oneida	22	7%	7	1.4	11%	4	0	0%	0	11	6%	30
Portage	55	17%	14	2.8	21%	4	0	0%	0	28	15%	41
Price	7	2%	1	0.2	2%	1	0	0%	0	1	1%	7
Sawyer	8	2%	0	0.0	0%	0	1	9%	6	4	2%	23
Taylor	4	1%	1	0.2	2%	1	0	0%	0	3	2%	16
Vilas	16	5%	2	0.4	3%	2	0	0%	0	9	5%	41
Wood	55	17%	8	1.6	12%	2	2	18%	3	31	17%	42
Total	326	100%	66	13.2	100%	3	11	100%	2	187	100%	39

**Table 14. Reported cases of HIV infection
Southeastern Region, Wisconsin, 1983-2008**

	Year of report											
	1983-2008(a)		2003-2007				2008			Presumed alive		
	Cases	%	Cases	Avg(b)	%	Rate(c)	Cases	%	Rate(c)	Cases	%	Rate(c)
Total												
Total cases(d)	6,230	100%	1,101	220	100%	11	232	100%	11	3,965	100%	190
Disease category												
AIDS	4,202	67%	505	101	46%	5	73	31%	4	2,112	53%	101
Non-AIDS	2,028	33%	596	119	54%	6	159	69%	8	1,853	47%	89
Sex												
Male	5,114	82%	873	175	79%	17	192	83%	19	3,144	79%	307
Female	1,116	18%	228	46	21%	4	40	17%	4	821	21%	77
Unknown	0	0%	0	0	0%	-	0	0%	-	0	0%	-
Race/Ethnicity												
White	2,712	44%	376	75	34%	5	81	35%	5	1,470	37%	94
African American	2,726	44%	527	105	48%	37	114	49%	40	1,907	48%	665
Hispanic	722	12%	178	36	16%	21	33	14%	19	535	13%	306
American Indian	20	0%	1	0	0%	0	1	0%	10	9	0%	87
Asian/Pacific Islander	22	0%	10	2	1%	4	2	1%	4	18	0%	37
Multi-racial	28	0%	9	2	1%	-	1	0%	-	26	1%	-
Unknown	0	0%	0	0	0%	-	0	0%	-	0	0%	-
Age(e)												
<5	49	1%	7	1	1%	1	0	0%	0	1	0%	1
5-14	22	0%	4	1	0%	0	0	0%	0	17	0%	6
15-19	186	3%	46	9	4%	6	15	6%	10	28	1%	19
20-24	700	11%	147	29	13%	21	32	14%	23	115	3%	84
25-44	4,416	71%	692	138	63%	25	143	62%	26	1,833	46%	332
45+	857	14%	205	41	19%	5	42	18%	5	1,970	50%	242
Unknown	0	0%	0	0	0%	-	0	0%	-	1	0%	-
Risk exposure												
Men who have sex with men (MSM)	3,271	53%	525	105	48%	-	131	56%	-	1,947	49%	-
MSM and IDU	399	6%	57	11	5%	-	2	1%	-	232	6%	-
Injecting drug use (IDU)	928	15%	107	21	10%	-	12	5%	-	525	13%	-
High-risk heterosexual contact	780	13%	143	29	13%	-	18	8%	-	585	15%	-
Other	125	2%	10	2	1%	-	0	0%	-	63	2%	-
Undetermined	727	12%	259	52	24%	-	69	30%	-	613	15%	-
Year of first report	Cases	%	Rate(c)									
Cases reported before 1999	3,983	64%	-									
1999	237	4%	12									
2000	232	4%	12									
2001	203	3%	10									
2002	242	4%	12									
2003	200	3%	10									
2004	235	4%	11									
2005	224	4%	11									
2006	225	4%	11									
2007	217	3%	10									
2008	232	4%	11									

- a. The first cases of HIV infection in Wisconsin were reported in 1983. Thus, these represent cumulative cases through the specified date.
- b. The average annual cases in the specified period.
- c. Cases per 100,000 population. Rates not available for risk exposure groups.
- d. Demographic and risk exposure breakdown not shown if total is less than 5 cases.
- e. Age when first diagnosed with HIV infection, except for cases presumed alive where age is age on 12/31/2008.

**Table 15. Reported cases of HIV infection by county
Southeastern Region, Wisconsin, 1983-2008**

County	Year of report											
	1983-2008(a)		2003-2007				2008			Presumed alive		
	Cases	%	Cases	Avg(b)	%	Rate(c)	Cases	%	Rate(c)	Cases	%	Rate(c)
Jefferson	43	1%	9	1.8	1%	2	1	0%	1	23	1%	29
Kenosha	315	5%	70	14.0	6%	9	15	6%	9	205	5%	126
Milwaukee	5,134	82%	869	173.8	79%	18	180	78%	19	3273	83%	344
Ozaukee	52	1%	12	2.4	1%	3	7	3%	8	35	1%	41
Racine	315	5%	60	12.0	5%	6	15	6%	8	202	5%	104
Walworth	84	1%	19	3.8	2%	4	1	0%	1	45	1%	45
Washington	60	1%	12	2.4	1%	2	3	1%	2	41	1%	32
Waukesha	227	4%	50	10.0	5%	3	10	4%	3	141	4%	37
Total	6,230	100%	1,101	220.2	100%	11	232	100%	11	3,965	100%	190

**Table 16. Reported cases of HIV infection
Southern Region, Wisconsin, 1983-2008**

	Year of report											
	1983-2008(a)		2003-2007				2008			Presumed alive		
	Cases	%	Cases	Avg(b)	%	Rate(c)	Cases	%	Rate(c)	Cases	%	Rate(c)
Total												
Total cases(d)	1,859	100%	398	80	100%	8	74	100%	7	1,234	100%	118
Disease category												
AIDS	1,256	68%	186	37	47%	4	34	46%	3	678	55%	65
Non-AIDS	603	32%	212	42	53%	4	40	54%	4	556	45%	53
Sex												
Male	1,545	83%	319	64	80%	12	55	74%	10	984	80%	187
Female	314	17%	79	16	20%	3	19	26%	4	250	20%	48
Unknown	0	0%	0	0	0%	-	0	0%	-	0	0%	-
Race/Ethnicity												
White	1,287	69%	250	50	63%	5	40	54%	4	789	64%	84
African American	423	23%	99	20	25%	54	21	28%	57	323	26%	871
Hispanic	108	6%	36	7	9%	17	8	11%	20	90	7%	220
American Indian	13	1%	5	1	1%	22	1	1%	22	8	1%	174
Asian/Pacific Islander	23	1%	7	1	2%	4	2	3%	8	19	2%	72
Multi-racial	3	0%	1	0	0%	-	0	0%	-	3	0%	-
Unknown	2	0%	0	0	0%	-	2	3%	-	2	0%	-
Age(e)												
<5	17	1%	3	1	1%	2	3	4%	5	1	0%	2
5-14	10	1%	2	0	1%	0	0	0%	0	7	1%	5
15-19	34	2%	13	3	3%	4	4	5%	5	11	1%	15
20-24	202	11%	48	10	12%	12	17	23%	21	36	3%	44
25-44	1,302	70%	246	49	62%	17	36	49%	12	526	43%	178
45+	294	16%	86	17	22%	4	14	19%	3	653	53%	163
Unknown	0	0%	0	0	0%	-	0	0%	-	-	-	-
Risk exposure												
Men who have sex with men (MSM)	1,012	54%	206	41	52%	-	34	46%	-	624	51%	-
MSM and IDU	131	7%	28	6	7%	-	1	1%	-	86	7%	-
Injecting drug use (IDU)	212	11%	34	7	9%	-	4	5%	-	132	11%	-
High-risk heterosexual contact	209	11%	44	9	11%	-	5	7%	-	173	14%	-
Other	63	3%	5	1	1%	-	3	4%	-	32	3%	-
Undetermined	232	12%	81	16	20%	-	27	36%	-	187	15%	-
Year of first report	Cases	%	Rate(c)									
Cases reported before 1999	1,108	60%	-									
1999	68	4%	7									
2000	72	4%	7									
2001	68	4%	7									
2002	71	4%	7									
2003	71	4%	7									
2004	89	5%	9									
2005	58	3%	6									
2006	92	5%	9									
2007	88	5%	8									
2008	74	4%	7									

a. The first cases of HIV infection in Wisconsin were reported in 1983. Thus, these represent cumulative cases through the specified date.

b. The average annual cases in the specified period.

c. Cases per 100,000 population. Rates not available for risk exposure groups.

d. Demographic and risk exposure breakdown not shown if total is less than 5 cases.

e. Age when first diagnosed with HIV infection, except for cases presumed alive where age is age on 12/31/2008.

**Table 17. Reported cases of HIV infection by county
Southern Region, Wisconsin, 1983-2008**

County	Year of report											
	1983-2008(a)		2003-2007				2008			Presumed alive		
	Cases	%	Cases	Avg(b)	%	Rate(c)	Cases	%	Rate(c)	Cases	%	Rate(c)
Adams	25	1%	4	0.8	1%	4	0	0%	0	13	1%	63
Columbia	40	2%	11	2.2	3%	4	1	1%	2	20	2%	36
Crawford	23	1%	4	0.8	1%	5	0	0%	0	10	1%	59
Dane	1,298	70%	277	55.4	70%	12	55	74%	12	877	71%	184
Dodge	49	3%	13	2.6	3%	3	1	1%	1	34	3%	39
Grant	30	2%	3	0.6	1%	1	1	1%	2	14	1%	29
Green	33	2%	5	1.0	1%	3	1	1%	3	18	1%	50
Iowa	19	1%	6	1.2	2%	5	1	1%	4	12	1%	51
Juneau	12	1%	2	0.4	1%	2	0	0%	0	7	1%	26
Lafayette	10	1%	2	0.4	1%	3	1	1%	6	6	0%	38
Richland	10	1%	1	0.2	0%	1	2	3%	11	6	0%	33
Rock	256	14%	59	11.8	15%	7	9	12%	6	178	14%	112
Sauk	54	3%	11	2.2	3%	4	2	3%	3	39	3%	67
Total	1,859	100%	398	79.6	100%	8	74	100%	7	1,234	100%	118

**Table 18. Reported cases of HIV infection
Western Region, Wisconsin, 1983-2008**

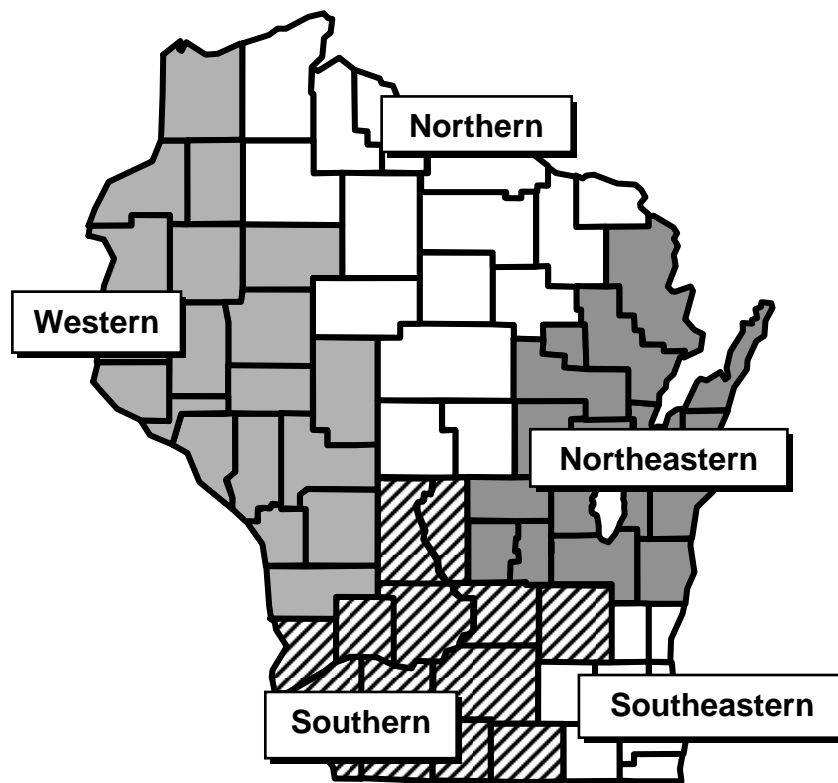
	Year of report											
	1983-2008(a)		2003-2007				2008			Presumed alive		
	Cases	%	Cases	Avg(b)	%	Rate(c)	Cases	%	Rate(c)	Cases	%	Rate(c)
Total												
Total cases(d)	650	100%	149	30	100%	4	30	100%	4	408	100%	52
Disease category												
AIDS	446	69%	78	16	52%	2	15	50%	2	226	55%	29
Non-AIDS	204	31%	71	14	48%	2	15	50%	2	182	45%	23
Sex												
Male	554	85%	115	23	77%	6	22	73%	6	332	81%	85
Female	96	15%	34	7	23%	2	8	27%	2	76	19%	19
Unknown	0	0%	0	0	0%	-	0	0%	-	0	0%	-
Race/Ethnicity												
White	544	84%	109	22	73%	3	21	70%	3	324	79%	43
African American	48	7%	16	3	11%	49	3	10%	49	38	9%	619
Hispanic	35	5%	16	3	11%	30	4	13%	40	28	7%	283
American Indian	7	1%	3	1	2%	15	1	3%	15	4	1%	60
Asian/Pacific Islander	11	2%	4	1	3%	9	0	0%	0	10	2%	90
Multi-racial	4	1%	1	0	1%	-	0	0%	-	4	1%	-
Unknown	1	0%	0	0	0%	-	1	3%	-	0	0%	-
Age(e)												
<5	4	1%	2	0	1%	0	0	0%	0	1	0%	2
5-14	2	0%	1	0	1%	0	0	0%	0	1	0%	1
15-19	18	3%	7	1	5%	2	1	3%	2	1	0%	2
20-24	66	10%	19	4	13%	6	4	13%	6	12	3%	19
25-44	450	69%	91	18	61%	9	19	63%	9	177	43%	86
45+	110	17%	29	6	19%	2	6	20%	2	216	53%	69
Unknown	0	0%	0	0	0%	-	0	0%	-	-	-	-
Risk exposure												
Men who have sex with men (MSM)	352	54%	66	13	44%	-	13	43%	-	205	50%	-
MSM and IDU	55	8%	12	2	8%	-	3	10%	-	36	9%	-
Injecting drug use (IDU)	65	10%	8	2	5%	-	1	3%	-	39	10%	-
High-risk heterosexual contact	73	11%	21	4	14%	-	5	17%	-	54	13%	-
Other	23	4%	3	1	2%	-	0	0%	-	8	2%	-
Undetermined	82	13%	39	8	26%	-	8	27%	-	66	16%	-
Year of first report	Cases	%	Rate(c)									
Cases reported before 1999	387	60%	-									
1999	26	4%	4									
2000	22	3%	3									
2001	20	3%	3									
2002	16	2%	2									
2003	34	5%	4									
2004	26	4%	3									
2005	23	4%	3									
2006	35	5%	4									
2007	31	5%	4									
2008	30	5%	4									

a. The first cases of HIV infection in Wisconsin were reported in 1983. Thus, these represent cumulative cases through the specified date.
b. The average annual cases in the specified period.
c. Cases per 100,000 population. Rates not available for risk exposure groups.
d. Demographic and risk exposure breakdown not shown if total is less than 5 cases.
e. Age when first diagnosed with HIV infection, except for cases presumed alive where age is age on 12/31/2008.

**Table 19. Reported cases of HIV infection by county
Western Region, Wisconsin, 1983-2008**

County	Year of report											
	1983-2008(a)		2003-2007				2008			Presumed alive		
	Cases	%	Cases	Avg(b)	%	Rate(c)	Cases	%	Rate(c)	Cases	%	Rate(c)
Barron	40	6%	10	2.0	7%	4	2	7%	4	25	6%	55
Buffalo	5	1%	3	0.6	2%	4	0	0%	0	3	1%	22
Burnett	15	2%	6	1.2	4%	7	0	0%	0	11	3%	67
Chippewa	28	4%	7	1.4	5%	2	0	0%	0	16	4%	26
Clark	15	2%	8	1.6	5%	5	0	0%	0	11	3%	33
Douglas	56	9%	6	1.2	4%	3	2	7%	5	31	8%	71
Dunn	17	3%	4	0.8	3%	2	1	3%	2	9	2%	21
Eau Claire	96	15%	16	3.2	11%	3	5	17%	5	58	14%	60
Jackson	7	1%	1	0.2	1%	1	0	0%	0	1	0%	5
La Crosse	194	30%	50	10.0	34%	9	7	23%	6	131	32%	118
Monroe	29	4%	6	1.2	4%	3	2	7%	5	18	4%	42
Pepin	2	0%	0	0.0	0%	0	0	0%	0	2	0%	27
Pierce	31	5%	8	1.6	5%	4	3	10%	8	22	5%	56
Polk	26	4%	5	1.0	3%	2	2	7%	5	13	3%	29
Rusk	8	1%	3	0.6	2%	4	0	0%	0	5	1%	34
St. Croix	49	8%	11	2.2	7%	3	4	13%	5	37	9%	46
Trempealeau	12	2%	1	0.2	1%	1	1	3%	4	6	1%	22
Vernon	10	2%	1	0.2	1%	1	1	3%	3	4	1%	14
Washburn	10	2%	3	0.6	2%	4	0	0%	0	5	1%	30
Total	650	100%	149	29.8	100%	4	30	100%	4	408	100%	52

**Figure 31. Wisconsin Department of Health Services (DHS)
Public Health Regions**



Counties by region

Northeastern	Northern	Southeastern	Southern	Western
Brown	Ashland	Jefferson	Adams	Barron
Calumet	Bayfield	Kenosha	Columbia	Buffalo
Door	Florence	Milwaukee	Crawford	Burnett
Fond du lac	Forest	Ozaukee	Dane	Chippewa
Green Lake	Iron	Racine	Dodge	Clark
Kewaunee	Langlade	Walworth	Grant	Douglas
Manitowoc	Lincoln	Washington	Green	Dunn
Marinette	Marathon	Waukesha	Iowa	Eau Claire
Marquette	Oneida		Juneau	Jackson
Menominee	Portage		Lafayette	La Crosse
Oconto	Price		Richland	Monroe
Outagamie	Sawyer		Rock	Pepin
Shawano	Taylor		Sauk	Pierce
Sheboygan	Vilas			Polk
Waupaca	Wood			Rusk
Waushara				St. Croix
Winnebago				Trempealeau
				Vernon
				Washburn

Technical notes

This report is compiled by the Wisconsin AIDS/HIV Program and is based on HIV infection case surveillance data collected by the Wisconsin Division of Public Health (DPH). Data collected by the Wisconsin HIV Counseling, Testing and Referral Program are not included in this report. In Wisconsin, state statutes require health care providers to report cases of AIDS and HIV infection to the DPH.

Completeness of reporting for AIDS cases in Wisconsin is estimated to be over 85% but may vary by geographic region, risk exposure categories, and demographic groups. Completeness of reporting may be somewhat less for persons with HIV infection who do not meet the Centers for Disease Control and Prevention (CDC) surveillance case definition for AIDS. Thus, at any time, reported cases of HIV infection represent only part of the total number of diagnosed cases and because cases remain undiagnosed, reported HIV infection underestimates total HIV infection morbidity.

Data in this report are reported by health care providers who complete case report forms. This information is usually self-reported by patients. All data are provisional and subject to change as additional case information becomes available. "Cumulative cases" includes all cases reported from 1983 (the year the first cases were reported) to the date specified on the report. Cases "presumed alive" are reported cases for which no documentation of death has been received. Because of delays in reporting of deaths, the number of cases presumed alive should be considered provisional.

Current disease category

- In this report, "HIV infection" refers to all persons with laboratory confirmed HIV infection. This includes both AIDS and non-AIDS cases. Cases classified as "AIDS" includes only cases which meet the CDC surveillance case definition for AIDS.

Age

- For cases tallied by "year of report", age is the age at time of diagnosis. For cases presumed alive, age is the age on December 31, 2008.

Risk exposure

- For surveillance purposes, cases are counted only once in a hierarchy of exposure categories. Persons with more than one reported mode of exposure to HIV are classified in the first category in the hierarchy.
- The risk exposure category "MSM" includes men who report having sex with men with no history of injection drug use. This includes men who report sex with both men and women. In Wisconsin reporting of sexual orientation by health care providers is only required for AIDS cases.
- The risk exposure category "MSM&IDU" includes men who report having sex with men who also have a history of injection drug use.
- The risk exposure category "IDU" includes females and non-MSM males who report a history of injection drug use.

