

Sexually Transmitted Disease in Wisconsin 2008

Milwaukee County



Wisconsin STD Program

Wisconsin sexually transmitted disease surveillance report, 2008

Milwaukee County

	Chlamydia*			Gonorrhea*			Syphilis*			Total*		
	Cases	Percent	Rate**	Cases	Percent	Rate**	Cases	Percent	Rate**	Cases	Percent	Rate**
Total												
Total	9,702	100.0%	1,020	4,032	100.0%	424	137	100.0%	14	13,871	100.0%	1,458
Sex												
Male	2,433	25.1%	529	1,578	39.1%	343	93	67.9%	20	4,104	29.6%	892
Female	7,245	74.7%	1,475	2,446	60.7%	498	44	32.1%	9	9,735	70.2%	1,982
Unknown	24	0.2%	-	8	0.2%	-	0	0.0%	-	32	0.2%	-
Race												
White	743	7.7%	113	182	4.5%	28	27	19.7%	4	952	6.9%	145
African American	4,679	48.2%	1,853	2,574	63.8%	1,019	98	71.5%	39	7,351	53.0%	2,911
American Indian	37	0.4%	420	10	0.2%	113	2	1.5%	23	49	0.4%	556
Asian/Pacific Islander	41	0.4%	129	9	0.2%	28	0	0.0%	0	50	0.4%	157
Other	211	2.2%	-	50	1.2%	-	2	1.5%	-	263	1.9%	-
Unknown	3,991	41.1%	-	1,207	29.9%	-	8	5.8%	-	5,206	37.5%	-
Hispanic ethnicity												
Hispanic	408	4.2%	371	91	2.3%	83	3	2.2%	3	502	3.6%	456
Non Hispanic	4,754	49.0%	565	2,485	61.6%	295	120	87.6%	14	7,359	53.1%	875
Unknown	4,540	46.8%	-	1,456	36.1%	-	14	10.2%	-	6,010	43.3%	-
Age												
0-4	9	0.1%	12	4	0.1%	5	1	0.7%	1	14	0.1%	19
5-9	1	0.0%	1	1	0.0%	1	0	0.0%	0	2	0.0%	3
10-14	157	1.6%	235	89	2.2%	133	0	0.0%	0	246	1.8%	368
15-19	3,775	38.9%	5,479	1,462	36.3%	2,122	6	4.4%	9	5,243	37.8%	7,609
20-24	3,173	32.7%	5,015	1,256	31.2%	1,985	23	16.8%	36	4,452	32.1%	7,037
25-29	1,493	15.4%	2,512	610	15.1%	1,027	23	16.8%	39	2,126	15.3%	3,578
30-34	587	6.1%	912	270	6.7%	420	18	13.1%	28	875	6.3%	1,360
35-39	283	2.9%	413	172	4.3%	251	15	10.9%	22	470	3.4%	686
40-44	119	1.2%	172	70	1.7%	101	14	10.2%	20	203	1.5%	293
45-49	54	0.6%	75	52	1.3%	72	21	15.3%	29	127	0.9%	175
50+	48	0.5%	17	46	1.1%	17	16	11.7%	6	110	0.8%	40
Unknown	0	0.0%	-	0	0.0%	-	0	0.0%	-	0	0.0%	-

* Demographic breakdown not available for diseases with less than 5 cases reported.

** Cases per 100,000 population

Wisconsin sexually transmitted disease surveillance report, 2008

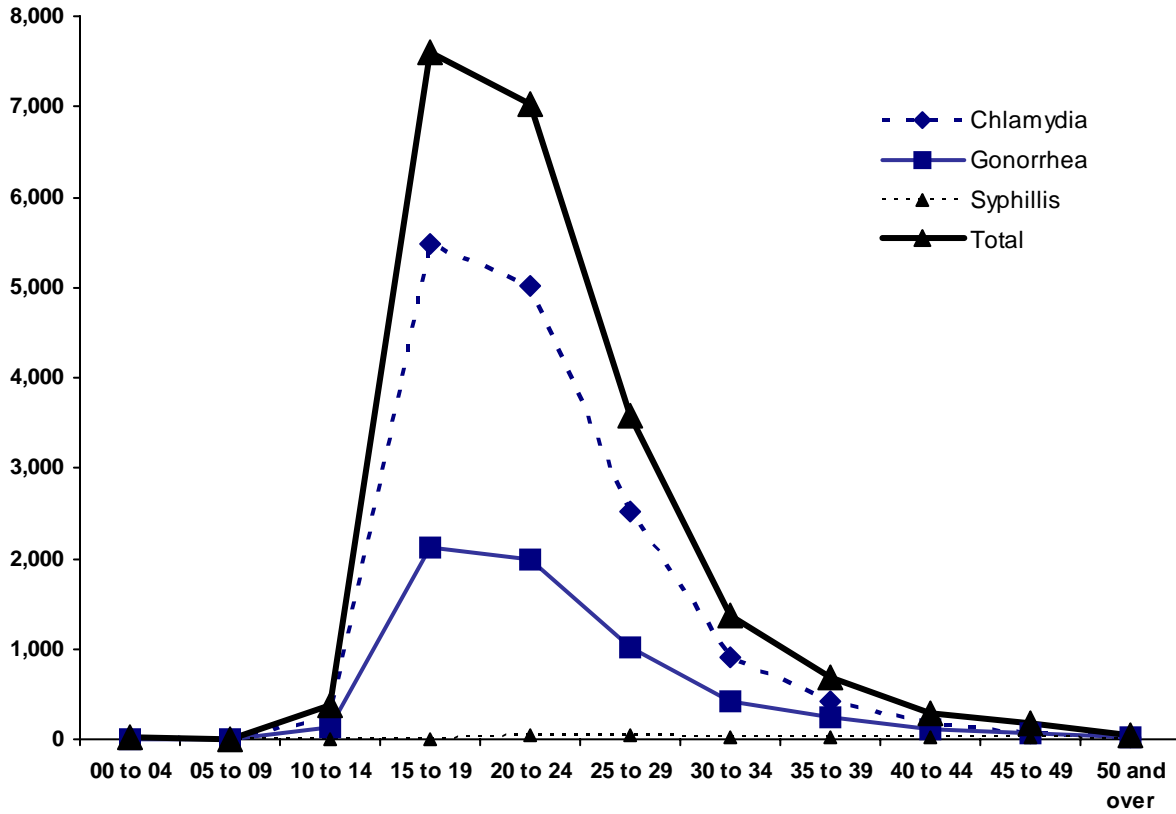
Reported cases by zipcode

Milwaukee County

Zipcode/Post Office	Clamidia			Gonorrhea			Syphilis			Total		
	Cases	Percent	Rate*	Cases	Percent	Rate*	Cases	Percent	Rate*	Cases	Percent	Rate*
53110 Cudahy	53	0.5%	284	7	0.2%	37	1	0.7%	5	61	0.4%	327
53129 Greendale	14	0.1%	102	3	0.1%	22	1	0.7%	7	18	0.1%	131
53130 Hales Corners	8	0.1%	108	1	0.0%	13	0	0.0%	0	9	0.1%	121
53132 Franklin	60	0.6%	180	17	0.4%	51	0	0.0%	0	77	0.6%	231
53154 Oak Creek	47	0.5%	144	6	0.1%	18	2	1.5%	6	55	0.4%	169
53172 South Milwaukee	45	0.5%	214	5	0.1%	24	0	0.0%	0	50	0.4%	238
53202 Milwaukee	101	1.0%	487	44	1.1%	212	9	6.6%	43	154	1.1%	742
53203 Milwaukee	14	0.1%	4,217	4	0.1%	1,205	0	0.0%	0	18	0.1%	5,422
53204 Milwaukee	489	5.0%	1,166	127	3.1%	303	6	4.4%	14	622	4.5%	1,483
53205 Milwaukee	307	3.2%	2,852	149	3.7%	1,384	5	3.6%	46	461	3.3%	4,283
53206 Milwaukee	1,047	10.8%	3,218	548	13.6%	1,684	17	12.4%	52	1,612	11.6%	4,955
53207 Milwaukee	118	1.2%	327	40	1.0%	111	2	1.5%	6	160	1.2%	443
53208 Milwaukee	687	7.1%	1,975	312	7.7%	897	14	10.2%	40	1,013	7.3%	2,912
53209 Milwaukee	837	8.6%	1,733	402	10.0%	832	13	9.5%	27	1,252	9.0%	2,592
53210 Milwaukee	824	8.5%	2,729	400	9.9%	1,325	11	8.0%	36	1,235	8.9%	4,091
53211 Milwaukee	94	1.0%	271	24	0.6%	69	2	1.5%	6	120	0.9%	346
53212 Milwaukee	686	7.1%	2,250	390	9.7%	1,279	15	10.9%	49	1,091	7.9%	3,579
53213 Milwaukee	59	0.6%	232	14	0.3%	55	0	0.0%	0	73	0.5%	287
53214 Milwaukee	152	1.6%	434	38	0.9%	109	2	1.5%	6	192	1.4%	548
53215 Milwaukee	485	5.0%	892	88	2.2%	162	4	2.9%	7	577	4.2%	1,061
53216 Milwaukee	743	7.7%	2,216	333	8.3%	993	5	3.6%	15	1,081	7.8%	3,224
53217 Milwaukee	26	0.3%	91	4	0.1%	14	1	0.7%	4	31	0.2%	109
53218 Milwaukee	899	9.3%	2,242	376	9.3%	938	9	6.6%	22	1,284	9.3%	3,202
53219 Milwaukee	85	0.9%	255	28	0.7%	84	3	2.2%	9	116	0.8%	348
53220 Milwaukee	73	0.8%	286	14	0.3%	55	1	0.7%	4	88	0.6%	345
53221 Milwaukee	121	1.2%	342	28	0.7%	79	0	0.0%	0	149	1.1%	421
53222 Milwaukee	121	1.2%	493	57	1.4%	232	0	0.0%	0	178	1.3%	725
53223 Milwaukee	290	3.0%	992	87	2.2%	298	5	3.6%	17	382	2.8%	1,306
53224 Milwaukee	280	2.9%	1,449	116	2.9%	600	0	0.0%	0	396	2.9%	2,049
53225 Milwaukee	459	4.7%	1,788	175	4.3%	682	2	1.5%	8	636	4.6%	2,477
53226 Milwaukee	56	0.6%	306	19	0.5%	104	0	0.0%	0	75	0.5%	410
53227 Milwaukee	70	0.7%	296	13	0.3%	55	1	0.7%	4	84	0.6%	355
53228 Milwaukee	22	0.2%	153	9	0.2%	63	0	0.0%	0	31	0.2%	216
53233 Milwaukee	260	2.7%	1,696	115	2.9%	750	2	1.5%	13	377	2.7%	2,460
53235 Milwaukee	23	0.2%	253	6	0.1%	66	0	0.0%	0	29	0.2%	319
Zip code specified	9,655	99.5%	-	3,999	99.2%	-	133	97.1%	-	13,787	99.4%	-
Zip code not specified	47	0.5%	-	33	0.8%	-	4	2.9%	-	84	0.6%	-
County total	9,702	100.0%	-	4,032	100.0%	-	137	100.0%	-	13,871	100.0%	-

* Cases per 100,000 population.

Wisconsin sexually transmitted disease surveillance report, 2008
Age-specific sexually transmitted disease rates*
Milwaukee County



* Cases per 100,000 population.

Wisconsin sexually transmitted disease surveillance report, 2008
Unadjusted* and imputed cases per 100,000 population by race**
Milwaukee County

	White		African American		American Indian		Asian/Pacific Islander	
	Unadjusted*	Imputed**	Unadjusted*	Imputed**	Unadjusted*	Imputed**	Unadjusted*	Imputed**
Chlamydia	113	235	1,853	3,143	420	1,154	129	273
Gonorrhea	28	52	1,019	1,439	113	183	28	51
Syphilis	4	4	39	40	23	23	0	0
Total	145	291	2,911	4,623	556	1,359	157	324

* The unadjusted rate is the number reported cases with specified race per 100,000 population. Because some cases are reported without specified race, the unadjusted rate under-estimates actual morbidity and thus should be regarded as a minimum estimate.

** The imputed rate takes into consideration cases reported without race specified. To calculate the imputed rate reported cases with unspecified race were statistically allocated using the age-sex-county-specific race distribution for cases with specified race. Thus, imputed rates specified in this table are estimates.

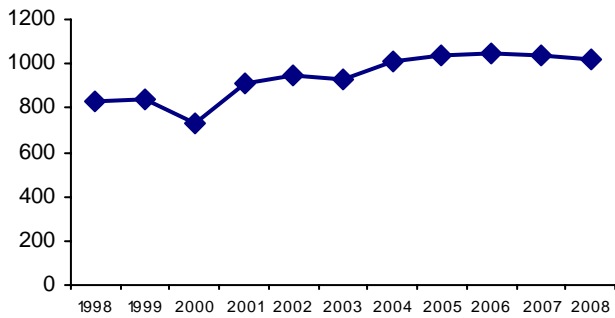
Wisconsin sexually transmitted disease surveillance report, 2008

Reported cases by year of diagnosis, past ten years

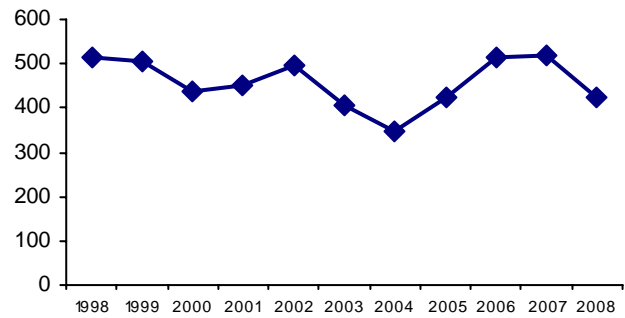
Milwaukee County

Year	Chlamydia		Gonorrhea		Syphilis		Total	
	Cases	Rate*	Cases	Rate*	Cases	Rate*	Cases	Rate*
1999	7,861	836	4,773	507	121	13	12,755	1,356
2000	6,901	734	4,099	436	151	16	11,151	1,187
2001	8,643	916	4,276	453	101	11	13,020	1,379
2002	9,011	952	4,687	495	96	10	13,794	1,457
2003	8,795	927	3,854	406	69	7	12,718	1,340
2004	9,642	1,015	3,299	347	77	8	13,018	1,370
2005	9,888	1,041	4,027	424	67	7	13,982	1,473
2006	9,975	1,047	4,896	514	90	9	14,961	1,571
2007	9,834	1,034	4,916	517	120	13	14,870	1,563
2008	9,702	1,020	4,032	424	137	14	13,871	1,458

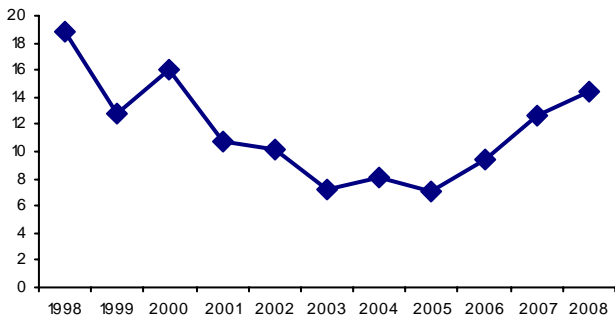
Chlamydia rate*



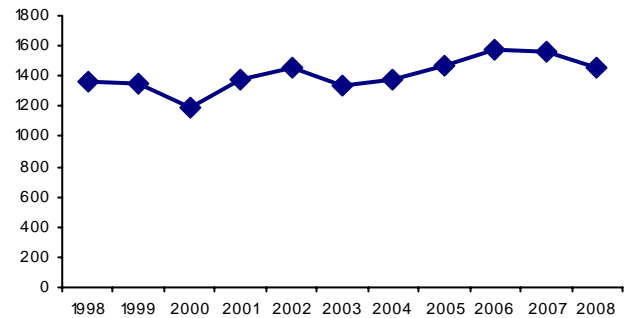
Gonorrhea rate*



Syphilis rate*



Total rate*



* Cases per 100,000 population.

Wisconsin sexually transmitted disease surveillance report, 2008

Syphilis cases by disease stage

Milwaukee County

	Primary			Secondary			Early latent			Early total**		
	Cases	Percent	Rate*	Cases	Percent	Rate*	Cases	Percent	Rate*	Cases	Percent	Rate*
Total												
Total	11	100.0%	1.2	32	100.0%	3.4	57	100.0%	6.0	100	100.0%	10.6
Sex												
Male	9	81.8%	2.0	23	71.9%	5.0	36	63.2%	7.8	68	68.0%	14.8
Female	2	18.2%	0.4	9	28.1%	1.8	21	36.8%	4.3	32	32.0%	6.5
Race												
White	2	18.2%	0.3	11	34.4%	1.7	9	15.8%	1.4	22	22.0%	3.3
African American	8	72.7%	3.2	20	62.5%	7.9	45	78.9%	17.8	73	73.0%	28.9
American Indian	0	0.0%	0.0	0	0.0%	0.0	2	3.5%	22.7	2	2.0%	22.7
Other	0	0.0%	-	1	3.1%	-	1	1.8%	-	2	2.0%	-
Unknown	1	9.1%	-	0	0.0%	-	0	0.0%	-	1	1.0%	-
Hispanic ethnicity												
Hispanic	0	0.0%	0.0	0	0.0%	0.0	2	3.5%	1.8	2	2.0%	1.8
Non Hispanic	9	81.8%	1.1	31	96.9%	3.7	52	91.2%	6.2	92	92.0%	10.9
Unknown	2	18.2%	-	1	3.1%	-	3	5.3%	-	6	6.0%	-
Age												
0-4	0	0.0%	0.0	0	0.0%	0.0	0	0.0%	0.0	0	0.0%	0.0
5-9	0	0.0%	0.0	0	0.0%	0.0	0	0.0%	0.0	0	0.0%	0.0
10-14	0	0.0%	0.0	0	0.0%	0.0	0	0.0%	0.0	0	0.0%	0.0
15-19	1	9.1%	1.5	1	3.1%	1.5	3	5.3%	4.4	5	5.0%	7.3
20-24	1	9.1%	1.6	5	15.6%	7.9	11	19.3%	17.4	17	17.0%	26.9
25-29	0	0.0%	0.0	7	21.9%	11.8	11	19.3%	18.5	18	18.0%	30.3
30-34	4	36.4%	6.2	0	0.0%	0.0	8	14.0%	12.4	12	12.0%	18.7
35-39	0	0.0%	0.0	6	18.8%	8.8	5	8.8%	7.3	11	11.0%	16.0
40-44	4	36.4%	5.8	4	12.5%	5.8	3	5.3%	4.3	11	11.0%	15.9
45-49	1	9.1%	1.4	6	18.8%	8.3	9	15.8%	12.4	16	16.0%	22.1
50+	0	0.0%	0.0	3	9.4%	1.1	7	12.3%	2.5	10	10.0%	3.6
Unknown	0	0.0%	-	0	0.0%	-	0	0.0%	-	0	0.0%	-

* Cases per 100,000 population

** Primary, secondary and early latent cases.

Wisconsin sexually transmitted disease surveillance report, 2008

Syphilis cases by disease stage

Milwaukee County

	Late latent			Unknown latency			Congenital			All stages		
	Cases	Percent	Rate*	Cases	Percent	Rate*	Cases	Percent	Rate*	Cases	Percent	Rate*
Total												
Total	33	100.0%	3.5	3	100.0%	0.3	1	100.0%	0.1	137	100.0%	14.4
Sex												
Male	22	66.7%	4.8	3	100.0%	0.7	0	0.0%	0.0	93	67.9%	20.2
Female	11	33.3%	2.2	0	0.0%	0.0	1	100.0%	0.2	44	32.1%	9.0
Race												
White	5	15.2%	0.8	0	0.0%	0.0	0	0.0%	0.0	27	19.7%	4.1
African American	22	66.7%	8.7	2	66.7%	0.8	1	100.0%	0.4	98	71.5%	38.8
American Indian	0	0.0%	0.0	0	0.0%	0.0	0	0.0%	0.0	2	1.5%	22.7
Other	0	0.0%	-	0	0.0%	-	0	0.0%	-	2	1.5%	-
Unknown	6	18.2%	-	1	33.3%	-	0	0.0%	-	8	5.8%	-
Hispanic ethnicity												
Hispanic	1	3.0%	0.9	0	0.0%	0.0	0	0.0%	0.0	3	2.2%	2.7
Non Hispanic	25	75.8%	3.0	2	66.7%	0.2	1	100.0%	0.1	120	87.6%	14.3
Unknown	7	21.2%	-	1	33.3%	-	0	0.0%	-	14	10.2%	-
Age												
0-4	0	0.0%	0.0	0	0.0%	0.0	1	100.0%	1.4	1	0.7%	1.4
5-9	0	0.0%	0.0	0	0.0%	0.0	0	0.0%	0.0	0	0.0%	0.0
10-14	0	0.0%	0.0	0	0.0%	0.0	0	0.0%	0.0	0	0.0%	0.0
15-19	1	3.0%	1.5	0	0.0%	0.0	0	0.0%	0.0	6	4.4%	8.7
20-24	6	18.2%	9.5	0	0.0%	0.0	0	0.0%	0.0	23	16.8%	36.4
25-29	3	9.1%	5.0	2	66.7%	3.4	0	0.0%	0.0	23	16.8%	38.7
30-34	5	15.2%	7.8	1	33.3%	1.6	0	0.0%	0.0	18	13.1%	28.0
35-39	4	12.1%	5.8	0	0.0%	0.0	0	0.0%	0.0	15	10.9%	21.5
40-44	3	9.1%	4.3	0	0.0%	0.0	0	0.0%	0.0	14	10.2%	20.2
45-49	5	15.2%	6.9	0	0.0%	0.0	0	0.0%	0.0	21	15.3%	29.0
50+	6	18.2%	2.2	0	0.0%	0.0	0	0.0%	0.0	16	11.7%	5.8
Unknown	0	0.0%	-	0	0.0%	-	0	0.0%	-	0	0.0%	-

* Cases per 100,000 population

Technical notes

1. These reports are compiled by the Wisconsin STD Program and are based on STD case surveillance data collected by the Wisconsin Division of Public Health (DPH). In Wisconsin, state statutes require health care providers to report cases of chlamydia, gonorrhea, syphilis, chancroid, and pelvic inflammatory disease to local health departments. Local health departments in turn forward reports to the DPH.
2. These reports include cases diagnosed within the specified period. Additional cases diagnosed within the specified period may continue to be reported. Thus, this report should be considered provisional, and this report supercedes all previous reports.
3. Reporting of STDs cases is incomplete. Reporting rates may vary by disease, geographic region, and demographic groups. At any time, reported STD cases represent only part of the total number of diagnosed cases, therefore STD surveillance data likely underestimate total STD morbidity.
4. In these reports, rates presented are cases per 100,000 population. Rates are not calculated for categories with small numbers of cases. See each report for the rate calculation threshold.
5. Typically a significant number of STD cases are reported with unspecified race. When noted, imputed race-specific rates have been calculated. To calculate the imputed rate, reported cases with unspecified race were statistically allocated using the county-specific race distribution among cases with specified race. Thus, imputed rates specified in this table are estimates and should be used only for comparison.
6. In these reports, cases are allocated to the county of residence at the time of diagnosis. Cases diagnosed among inmates of correctional facilities are allocated to the county of the facility.

For more information contact:

Wisconsin STD Program
1 West Wilson Street
PO Box 2659
Madison, WI53701-2659
Telephone: (608) 266-8479