

Sexually Transmitted Disease in Wisconsin



Wisconsin STD Control Section
Milwaukee County

Wisconsin sexually transmitted disease surveillance report, 2009

Milwaukee County

	Chlamydia*			Gonorrhea*			Syphilis*			Total*		
	Cases	Percent	Rate**	Cases	Percent	Rate**	Cases	Percent	Rate**	Cases	Percent	Rate**
Total												
Total	9,940	100.0%	1,043	3,517	100.0%	369	109	100.0%	11	13,566	100.0%	1,423
Sex												
Male	2,577	25.9%	558	1,444	41.1%	313	73	67.0%	16	4,094	30.2%	887
Female	7,297	73.4%	1,484	2,054	58.4%	418	36	33.0%	7	9,387	69.2%	1,909
Unknown	63	0.6%	-	18	0.5%	-	0	0.0%	-	81	0.6%	-
Race												
White	850	8.6%	129	198	5.6%	30	18	16.5%	3	1,066	7.9%	162
African American	4,257	42.8%	1,686	1,901	54.1%	753	79	72.5%	31	6,237	46.0%	2,470
American Indian	25	0.3%	259	14	0.4%	145	1	0.9%	10	40	0.3%	414
Asian/Pacific Islander	38	0.4%	116	10	0.3%	31	1	0.9%	3	49	0.4%	150
Other	175	1.8%	-	55	1.6%	-	2	1.8%	-	232	1.7%	-
Unknown	4,595	46.2%	-	1,339	38.1%	-	8	7.3%	-	5,942	43.8%	-
Hispanic ethnicity												
Hispanic	274	2.8%	240	75	2.1%	66	3	2.8%	3	352	2.6%	308
Not Hispanic	3,295	33.1%	393	1,358	38.6%	162	97	89.0%	12	4,750	35.0%	566
Unknown	6,371	64.1%	-	2,084	59.3%	-	9	8.3%	-	8,464	62.4%	-
Age												
0-4	11	0.1%	15	2	0.1%	3	0	0.0%	0	13	0.1%	17
5-9	0	0.0%	0	1	0.0%	1	0	0.0%	0	1	0.0%	1
10-14	161	1.6%	246	48	1.4%	73	0	0.0%	0	209	1.5%	319
15-19	3,619	36.4%	5,165	1,153	32.8%	1,645	10	9.2%	14	4,782	35.2%	6,825
20-24	3,480	35.0%	5,419	1,168	33.2%	1,819	25	22.9%	39	4,673	34.4%	7,277
25-29	1,511	15.2%	2,617	517	14.7%	896	14	12.8%	24	2,042	15.1%	3,537
30-34	616	6.2%	992	278	7.9%	448	13	11.9%	21	907	6.7%	1,461
35-39	277	2.8%	407	155	4.4%	228	11	10.1%	16	443	3.3%	651
40-44	144	1.4%	210	84	2.4%	123	18	16.5%	26	246	1.8%	359
45-49	49	0.5%	68	52	1.5%	72	8	7.3%	11	109	0.8%	151
50+	46	0.5%	16	48	1.4%	17	10	9.2%	4	104	0.8%	37
Unknown	0	0.0%	-	0	0.0%	-	0	0.0%	-	0	0.0%	-
Region of residence												
Northeastern	0	0.0%	-	0	0.0%	-	0	0.0%	-	0	0.0%	-
Northern	0	0.0%	-	0	0.0%	-	0	0.0%	-	0	0.0%	-
Southeastern	9,940	100.0%	1,043	3,517	100.0%	369	109	100.0%	11	13,566	100.0%	1,423
Southern	0	0.0%	-	0	0.0%	-	0	0.0%	-	0	0.0%	-
Western	0	0.0%	-	0	0.0%	-	0	0.0%	-	0	0.0%	-
Unknown	0	0.0%	-	0	0.0%	-	0	0.0%	-	0	0.0%	-

* Demographic breakdown not available for diseases with less than 5 cases reported.

** Cases per 100,000 population

Wisconsin sexually transmitted disease surveillance report, 2009

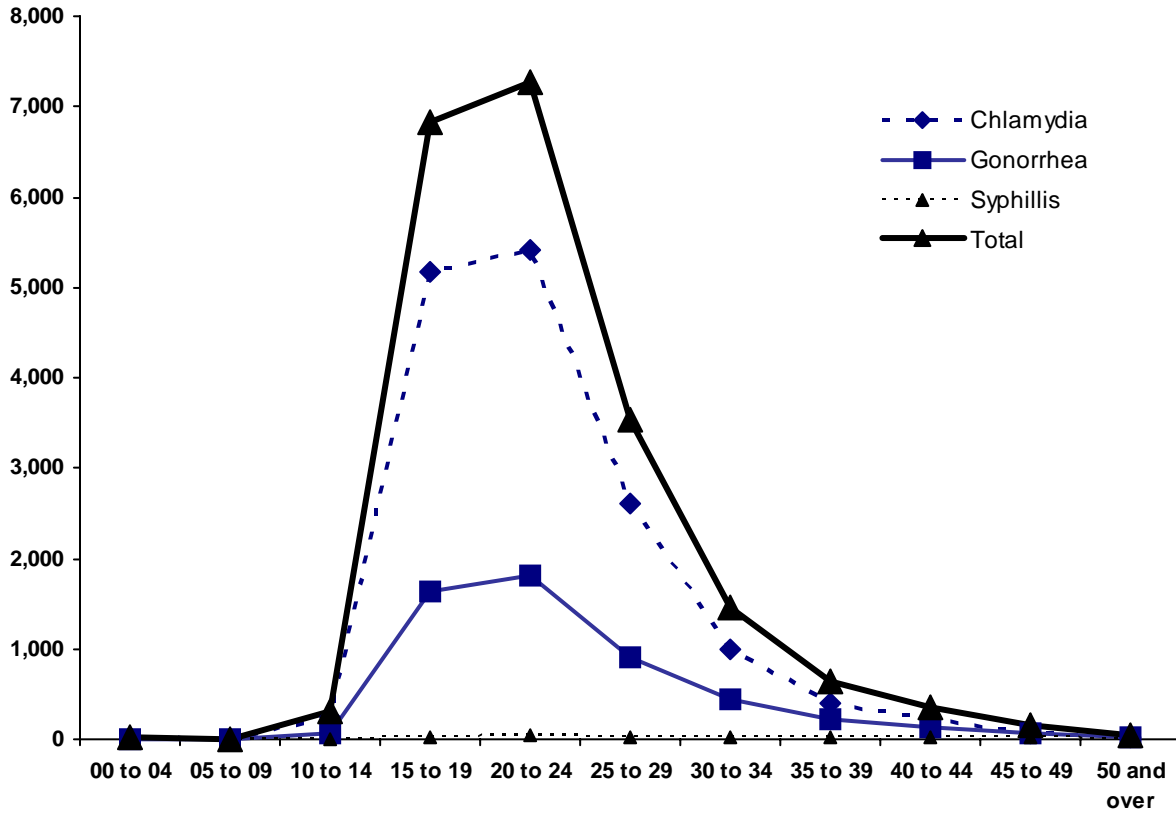
Reported cases by zipcode

Milwaukee County

Zipcode/Post Office	Chlamydia			Gonorrhea			Syphilis			Total		
	Cases	Percent	Rate*	Cases	Percent	Rate*	Cases	Percent	Rate*	Cases	Percent	Rate*
53110 Cudahy	46	0.5%	246	6	0.2%	32	2	1.8%	11	54	0.4%	289
53129 Greendale	14	0.1%	102	1	0.0%	7	0	0.0%	0	15	0.1%	109
53130 Hales Corners	6	0.1%	81	0	0.0%	0	1	0.9%	13	7	0.1%	94
53132 Franklin	147	1.5%	441	54	1.5%	162	1	0.9%	3	202	1.5%	606
53154 Oak Creek	64	0.6%	196	6	0.2%	18	0	0.0%	0	70	0.5%	215
53172 South Milwaukee	69	0.7%	328	9	0.3%	43	1	0.9%	5	79	0.6%	376
53202 Milwaukee	91	0.9%	438	26	0.7%	125	4	3.7%	19	121	0.9%	583
53203 Milwaukee	3	0.0%	904	2	0.1%	602	0	0.0%	0	5	0.0%	1,506
53204 Milwaukee	569	5.7%	1,356	160	4.5%	381	7	6.4%	17	736	5.4%	1,755
53205 Milwaukee	286	2.9%	2,657	141	4.0%	1,310	7	6.4%	65	434	3.2%	4,032
53206 Milwaukee	1,088	10.9%	3,344	482	13.7%	1,482	11	10.1%	34	1,581	11.7%	4,860
53207 Milwaukee	123	1.2%	341	33	0.9%	91	6	5.5%	17	162	1.2%	449
53208 Milwaukee	686	6.9%	1,972	295	8.4%	848	9	8.3%	26	990	7.3%	2,846
53209 Milwaukee	992	10.0%	2,054	347	9.9%	719	5	4.6%	10	1,344	9.9%	2,783
53210 Milwaukee	783	7.9%	2,593	294	8.4%	974	7	6.4%	23	1,084	8.0%	3,590
53211 Milwaukee	116	1.2%	335	23	0.7%	66	2	1.8%	6	141	1.0%	407
53212 Milwaukee	743	7.5%	2,437	304	8.6%	997	6	5.5%	20	1,053	7.8%	3,454
53213 Milwaukee	75	0.8%	295	17	0.5%	67	0	0.0%	0	92	0.7%	362
53214 Milwaukee	122	1.2%	348	37	1.1%	106	0	0.0%	0	159	1.2%	454
53215 Milwaukee	469	4.7%	863	101	2.9%	186	3	2.8%	6	573	4.2%	1,054
53216 Milwaukee	721	7.3%	2,151	278	7.9%	829	12	11.0%	36	1,011	7.5%	3,016
53217 Milwaukee	47	0.5%	165	13	0.4%	46	0	0.0%	0	60	0.4%	210
53218 Milwaukee	868	8.7%	2,165	316	9.0%	788	5	4.6%	12	1,189	8.8%	2,965
53219 Milwaukee	100	1.0%	300	25	0.7%	75	2	1.8%	6	127	0.9%	381
53220 Milwaukee	53	0.5%	208	11	0.3%	43	3	2.8%	12	67	0.5%	263
53221 Milwaukee	130	1.3%	367	19	0.5%	54	2	1.8%	6	151	1.1%	426
53222 Milwaukee	128	1.3%	521	45	1.3%	183	1	0.9%	4	174	1.3%	709
53223 Milwaukee	263	2.6%	899	104	3.0%	356	2	1.8%	7	369	2.7%	1,262
53224 Milwaukee	302	3.0%	1,563	96	2.7%	497	1	0.9%	5	399	2.9%	2,065
53225 Milwaukee	390	3.9%	1,519	142	4.0%	553	5	4.6%	19	537	4.0%	2,092
53226 Milwaukee	46	0.5%	251	12	0.3%	66	1	0.9%	5	59	0.4%	322
53227 Milwaukee	75	0.8%	317	10	0.3%	42	0	0.0%	0	85	0.6%	360
53228 Milwaukee	17	0.2%	118	3	0.1%	21	0	0.0%	0	20	0.1%	139
53233 Milwaukee	264	2.7%	1,722	92	2.6%	600	2	1.8%	13	358	2.6%	2,336
53235 Milwaukee	27	0.3%	297	7	0.2%	77	0	0.0%	0	34	0.3%	374
Zip code specified	9,923	99.8%	-	3,511	99.8%	-	108	99.1%	-	13,542	99.8%	-
Zip code not specified	17	0.2%	-	6	0.2%	-	1	0.9%	-	24	0.2%	-
County total	9,940	100.0%	-	3,517	100.0%	-	109	100.0%	-	13,566	100.0%	-

* Cases per 100,000 population.

Wisconsin sexually transmitted disease surveillance report, 2009
Age-specific sexually transmitted disease rates*
Milwaukee County



* Cases per 100,000 population.

Wisconsin sexually transmitted disease surveillance report, 2009
Unadjusted* and imputed cases per 100,000 population by race**
Milwaukee County

	White		African American		American Indian		Asian/Pacific Islander	
	Unadjusted*	Imputed**	Unadjusted*	Imputed**	Unadjusted*	Imputed**	Unadjusted*	Imputed**
Chlamydia	129	259	1,686	3,202	259	470	116	255
Gonorrhea	30	56	753	1,222	145	230	31	85
Syphilis	3	3	31	32	10	10	3	3
Total	162	318	2,470	4,456	414	710	150	343

* The unadjusted rate is the number reported cases with specified race per 100,000 population. Because some cases are reported without specified race, the unadjusted rate under-estimates actual morbidity and thus should be regarded as a minimum estimate.

** The imputed rate takes into consideration cases reported without race specified. To calculate the imputed rate reported cases with unspecified race were statistically allocated using the age-sex-county-specific race distribution for cases with specified race. Thus, imputed rates specified in this table are estimates.

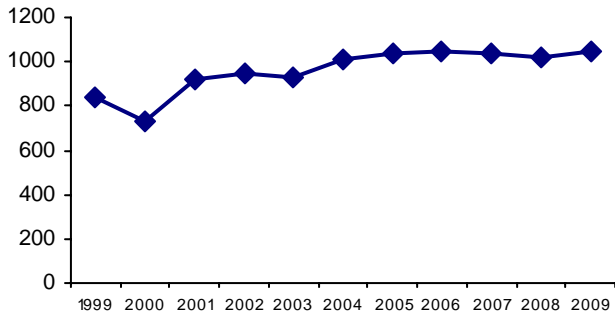
Wisconsin sexually transmitted disease surveillance report, 2009

Reported cases by year of diagnosis, past ten years

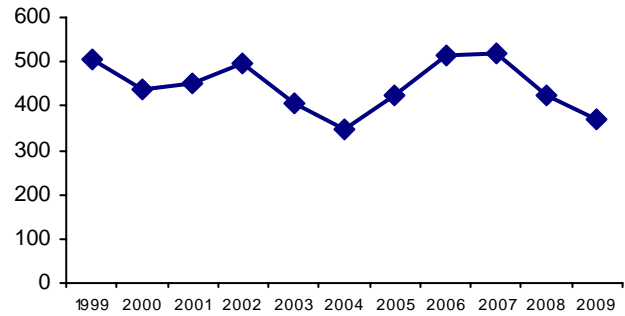
Milwaukee County

Year	Chlamydia		Gonorrhea		Syphilis		Total	
	Cases	Rate*	Cases	Rate*	Cases	Rate*	Cases	Rate*
2000	6,901	734	4,099	436	151	16	11,151	1,187
2001	8,643	916	4,276	453	101	11	13,020	1,380
2002	9,011	952	4,687	495	96	10	13,794	1,457
2003	8,795	927	3,854	406	69	7	12,718	1,340
2004	9,642	1,015	3,299	347	77	8	13,018	1,370
2005	9,888	1,042	4,027	424	67	7	13,982	1,473
2006	9,975	1,049	4,896	515	90	9	14,961	1,573
2007	9,834	1,034	4,916	517	120	13	14,870	1,563
2008	9,702	1,018	4,032	423	137	14	13,871	1,455
2009	9,940	1,043	3,517	369	109	11	13,566	1,423

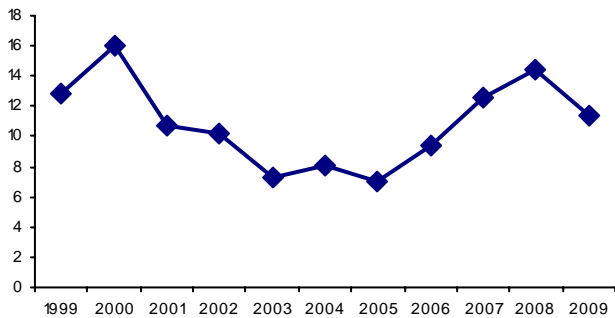
Chlamydia rate*



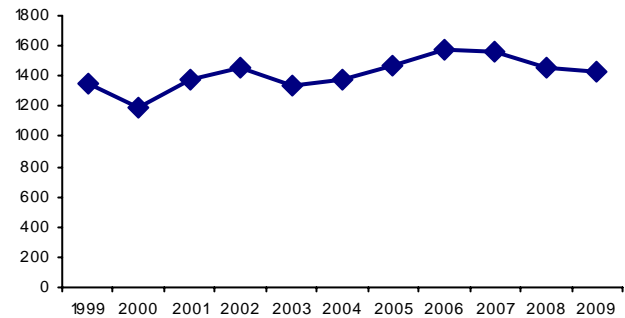
Gonorrhea rate*



Syphilis rate*



Total rate*



* Cases per 100,000 population.

Wisconsin sexually transmitted disease surveillance report, 2009

Syphilis cases by disease stage

Milwaukee County

	Primary			Secondary			Early latent			Early total**		
	Cases	Percent	Rate*	Cases	Percent	Rate*	Cases	Percent	Rate*	Cases	Percent	Rate*
Total												
Total	7	100.0%	0.7	21	100.0%	2.2	45	100.0%	4.7	73	100.0%	7.7
Sex												
Male	6	85.7%	1.3	13	61.9%	2.8	33	73.3%	7.1	52	71.2%	11.3
Female	1	14.3%	0.2	8	38.1%	1.6	12	26.7%	2.4	21	28.8%	4.3
Race												
White	1	14.3%	0.2	2	9.5%	0.3	5	11.1%	0.8	8	11.0%	1.2
African American	5	71.4%	2.0	16	76.2%	6.3	36	80.0%	14.3	57	78.1%	22.6
American Indian	0	0.0%	0.0	0	0.0%	0.0	0	0.0%	0.0	0	0.0%	0.0
Asian/Pacific Islander	0	0.0%	0.0	0	0.0%	0.0	1	2.2%	3.1	1	1.4%	3.1
Other	0	0.0%	-	0	0.0%	-	0	0.0%	-	0	0.0%	-
Unknown	1	14.3%	-	3	14.3%	-	3	6.7%	-	7	9.6%	-
Hispanic ethnicity												
Hispanic	0	0.0%	0.0	0	0.0%	0.0	1	2.2%	0.9	1	1.4%	0.9
Non Hispanic	6	85.7%	-	18	85.7%	-	40	88.9%	-	64	87.7%	-
Unknown	1	14.3%	-	3	14.3%	-	4	8.9%	-	8	11.0%	-
Age												
0-4	0	0.0%	0.0	0	0.0%	0.0	0	0.0%	0.0	0	0.0%	0.0
5-9	0	0.0%	0.0	0	0.0%	0.0	0	0.0%	0.0	0	0.0%	0.0
10-14	0	0.0%	0.0	0	0.0%	0.0	0	0.0%	0.0	0	0.0%	0.0
15-19	0	0.0%	0.0	1	4.8%	1.4	5	11.1%	7.1	6	8.2%	8.6
20-24	2	28.6%	3.1	4	19.0%	6.2	11	24.4%	17.1	17	23.3%	26.5
25-29	1	14.3%	1.7	5	23.8%	8.7	5	11.1%	8.7	11	15.1%	19.1
30-34	3	42.9%	4.8	1	4.8%	1.6	5	11.1%	8.1	9	12.3%	14.5
35-39	1	14.3%	1.5	3	14.3%	4.4	2	4.4%	2.9	6	8.2%	8.8
40-44	0	0.0%	0.0	5	23.8%	7.3	6	13.3%	8.8	11	15.1%	16.1
45-49	0	0.0%	0.0	1	4.8%	1.4	4	8.9%	5.5	5	6.8%	6.9
50+	0	0.0%	0.0	1	4.8%	0.4	7	15.6%	2.5	8	11.0%	2.8
Unknown	0	0.0%	-	0	0.0%	-	0	0.0%	-	0	0.0%	-

* Cases per 100,000 population

** Primary, secondary and early latent cases.

Wisconsin sexually transmitted disease surveillance report, 2009

Syphilis cases by disease stage

Milwaukee County

	Late latent			Unknown latency			Congenital			All stages		
	Cases	Percent	Rate*	Cases	Percent	Rate*	Cases	Percent	Rate*	Cases	Percent	Rate*
Total												
Total	36	100.0%	3.8	0	-	0.0	0	0.0%	0.0	109	100.0%	11.4
Sex												
Male	21	58.3%	4.5	0	-	0.0	0	0.0%	0.0	73	67.0%	15.8
Female	15	41.7%	3.1	0	-	0.0	0	0.0%	0.0	36	33.0%	7.3
Race												
White	10	27.8%	1.5	0	-	0.0	0	0.0%	0.0	18	16.5%	2.7
African American	22	61.1%	8.7	0	-	0.0	0	0.0%	0.0	79	72.5%	31.3
American Indian	1	2.8%	10.4	0	-	0.0	0	0.0%	0.0	1	0.9%	10.4
Asian/Pacific Islander	0	0.0%	0.0	0	-	0.0	0	0.0%	0.0	1	0.9%	3.1
Other	2	5.6%	-	0	-	-	0	0.0%	-	2	1.8%	-
Unknown	1	2.8%	-	0	-	-	0	0.0%	-	8	7.3%	-
Hispanic ethnicity												
Hispanic	2	5.6%	1.8	0	-	0.0	0	0.0%	0.0	3	2.8%	2.6
Non Hispanic	33	91.7%	-	0	-	-	0	0.0%	-	97	89.0%	-
Unknown	1	2.8%	-	0	-	-	0	0.0%	-	9	8.3%	-
Age												
0-4	0	0.0%	0.0	0	0.0%	0.0	0	0.0%	0.0	0	0.0%	0.0
5-9	0	0.0%	0.0	0	0.0%	0.0	0	0.0%	0.0	0	0.0%	0.0
10-14	0	0.0%	0.0	0	0.0%	0.0	0	0.0%	0.0	0	0.0%	0.0
15-19	4	11.1%	5.7	0	0.0%	0.0	0	0.0%	0.0	10	9.2%	14.3
20-24	8	22.2%	12.5	0	0.0%	0.0	0	0.0%	0.0	25	22.9%	38.9
25-29	3	8.3%	5.2	0	0.0%	0.0	0	0.0%	0.0	14	12.8%	24.3
30-34	4	11.1%	6.4	0	0.0%	0.0	0	0.0%	0.0	13	11.9%	20.9
35-39	5	13.9%	7.3	0	0.0%	0.0	0	0.0%	0.0	11	10.1%	16.2
40-44	7	19.4%	10.2	0	0.0%	0.0	0	0.0%	0.0	18	16.5%	26.3
45-49	3	8.3%	4.1	0	0.0%	0.0	0	0.0%	0.0	8	7.3%	11.1
50+	2	5.6%	0.7	0	0.0%	0.0	0	0.0%	0.0	10	9.2%	3.5
Unknown	0	0.0%	-	0	0.0%	-	0	0.0%	-	0	0.0%	-

* Cases per 100,000 population

Technical notes

1. These reports are compiled by the Wisconsin STD Program and are based on STD case surveillance data collected by the Wisconsin Division of Public Health (DPH). In Wisconsin, state statutes require health care providers to report cases of chlamydia, gonorrhea, syphilis, chancroid, and pelvic inflammatory disease to local health departments. Local health departments in turn forward reports to the DPH.
2. These reports include cases diagnosed within the specified period. Additional cases diagnosed within the specified period may continue to be reported. Thus, this report should be considered provisional, and this report supercedes all previous reports.
3. Reporting of STDs cases is incomplete. Reporting rates may vary by disease, geographic region, and demographic groups. At any time, reported STD cases represent only part of the total number of diagnosed cases, therefore STD surveillance data likely underestimate total STD morbidity.
4. In these reports, rates presented are cases per 100,000 population. Rates are not calculated for categories with small numbers of cases. See each report for the rate calculation threshold.
5. Typically a significant number of STD cases are reported with unspecified race. When noted, imputed race-specific rates have been calculated. To calculate the imputed rate, reported cases with unspecified race were statistically allocated using the county-specific race distribution among cases with specified race. Thus, imputed rates specified in this table are estimates and should be used only for comparison.
6. In these reports, cases are allocated to the county of residence at the time of diagnosis. Cases diagnosed among inmates of correctional facilities are allocated to the county of the facility.

For more information contact:

Wisconsin STD Program
1 West Wilson Street
PO Box 2659
Madison, WI53701-2659
Telephone: (608) 266-8479