



WISCONSIN DEPARTMENT OF HEALTH SERVICES
Division of Public Health
Bureau of Communicable Diseases and Emergency Response



Respiratory virus surveillance report for the week ending January 28, 2012 week 12-04

AT-A-GLANCE

- Respiratory viruses identified this week :
rhinovirus/enterovirus, RSV, and influenza (A/H3) are predominant.

- Influenza-like illness (ILI) activity for this week

Wisconsin	Low
Wisconsin (CDC level)	Minimal
Western Region	Low
Northern Region	Low
Northeastern Region	Low
Southeastern Region	Low
Southern Region	Low

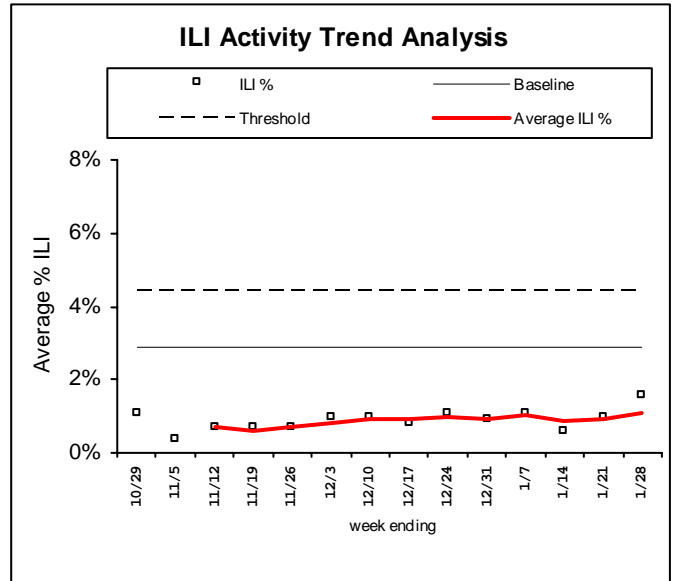
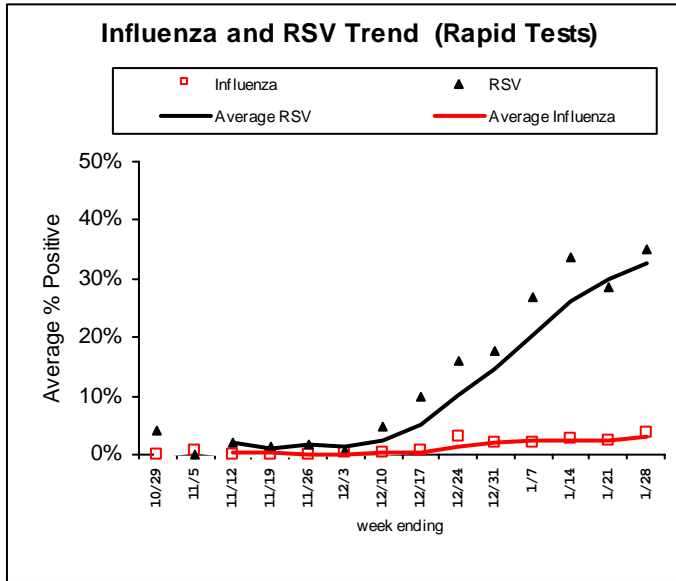
- ILI activity in Region V of the U.S. (WI, MN, IL, MI, OH, IN) is below baseline levels
- ILI activity in the U.S. is below baseline levels
- The Predictive Value Positive (PVP) for rapid influenza tests is: low but increasing
(PVP is the probability of disease in a patient with a positive test result)
- The Predictive Value Negative (PVN) for rapid influenza tests is: high but decreasing
(PVN is the probability of not having disease when the test result is negative)
- Influenza-associated pediatric deaths (October 8, 2011-present)

	Week 12-04	Total to Date
Wisconsin	0	0
United States	0	1

WISCONSIN and REGIONAL SUMMARIES
(Trend analysis based on 3-week moving averages)

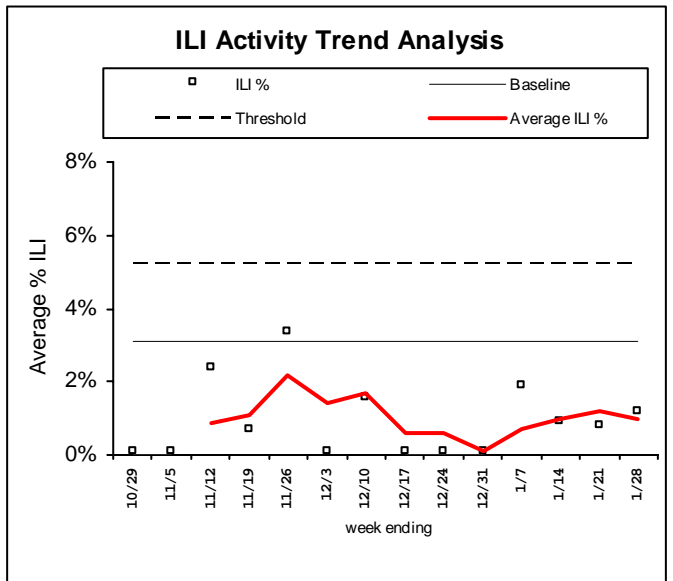
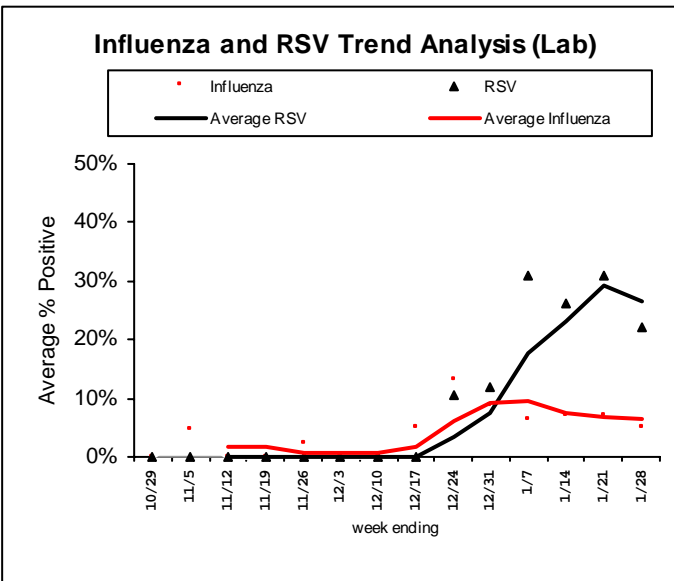
Wisconsin (ILI activity is Low)

INFLUENZA RAPID ANTIGEN TESTS					RSV RAPID ANTIGEN TESTS			INFLUENZA-LIKE ILLNESS		
Tested	Positive			% Positive	Tested	Positive	% Positive	ILI %	Baseline	Threshold
	Flu A	Flu B	Total							
483	17	2	19	3.9%	398	140	35.2%	1.6%	2.9%	4.4%



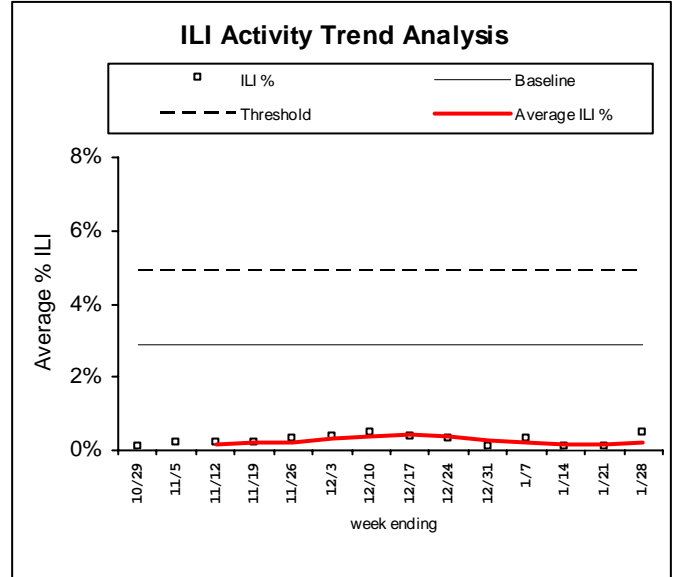
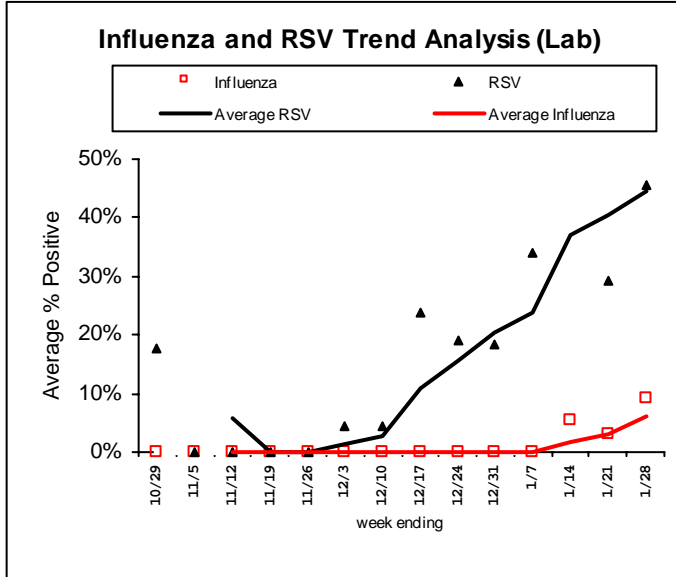
Northern Region (ILI activity is Low)

INFLUENZA RAPID ANTIGEN TESTS					RSV RAPID ANTIGEN TESTS			INFLUENZA-LIKE ILLNESS		
Tested	Positive			% Positive	Tested	Positive	% Positive	ILI %	Baseline	Threshold
	Flu A	Flu B	Total							
100	5	0	5	5.0%	63	14	22.2%	1.2%	3.1%	5.2%



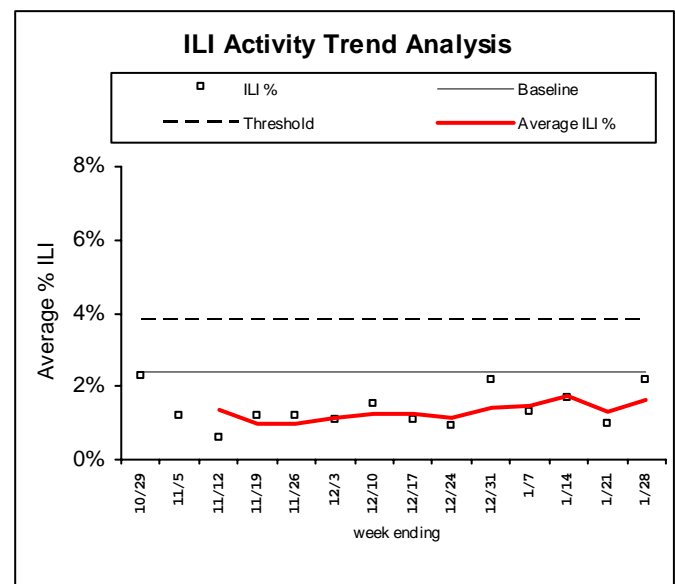
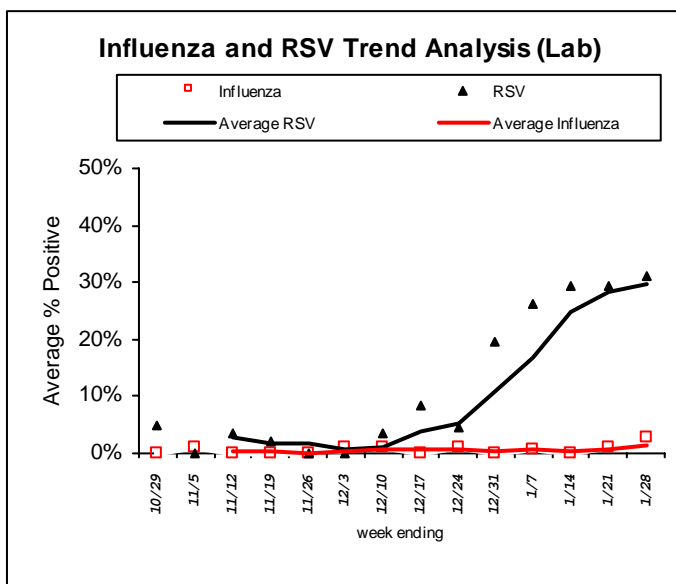
Western Region (ILI activity is Low)

INFLUENZA RAPID ANTIGEN TESTS				RSV RAPID ANTIGEN TESTS			INFLUENZA-LIKE ILLNESS			
Tested	Positive			% Positive	Tested	Positive	% Positive	ILI %	Baseline	Threshold
	Flu A	Flu B	Total							
87	7	1	8	9.2%	103	47	45.6%	0.5%	2.9%	4.9%



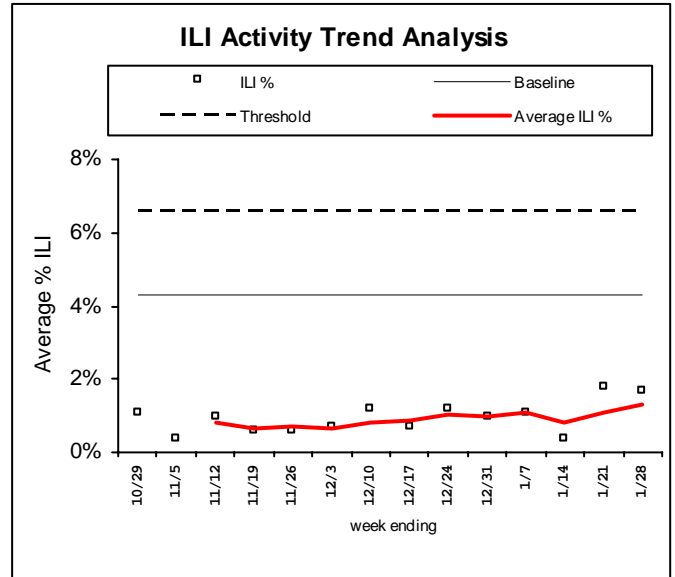
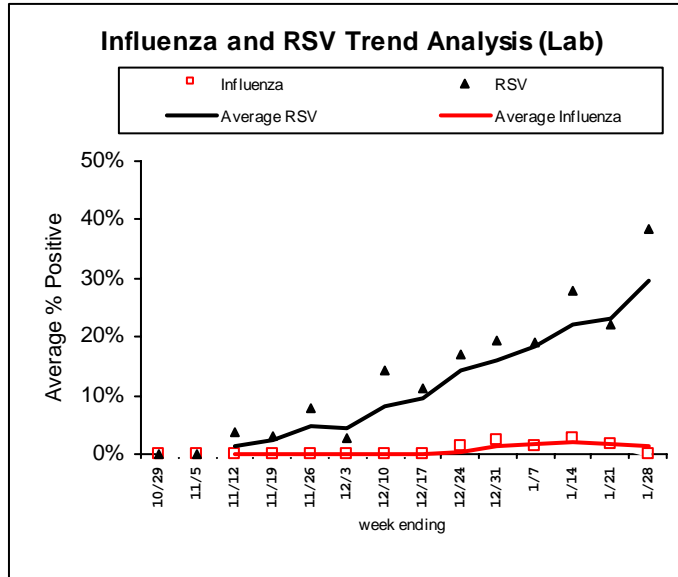
Northeastern Region (ILI activity is Low)

INFLUENZA RAPID ANTIGEN TESTS				RSV RAPID ANTIGEN TESTS			INFLUENZA-LIKE ILLNESS			
Tested	Positive			% Positive	Tested	Positive	% Positive	ILI %	Baseline	Threshold
	Flu A	Flu B	Total							
110	3	0	3	2.7%	84	26	31.0%	2.2%	2.4%	3.8%



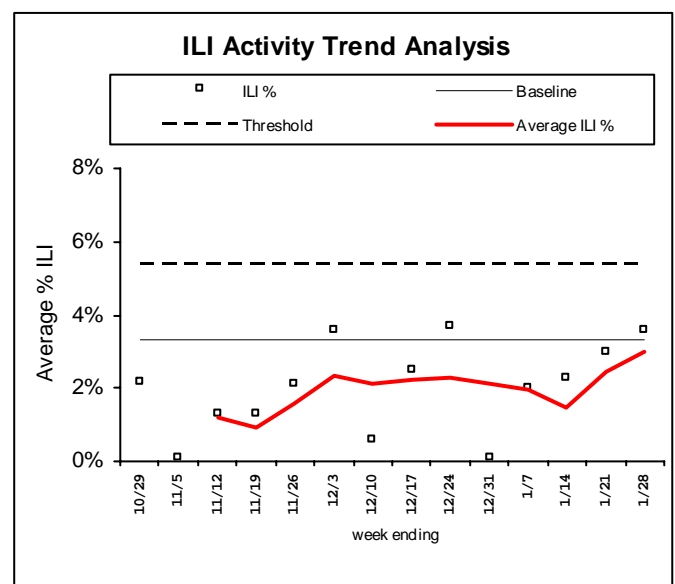
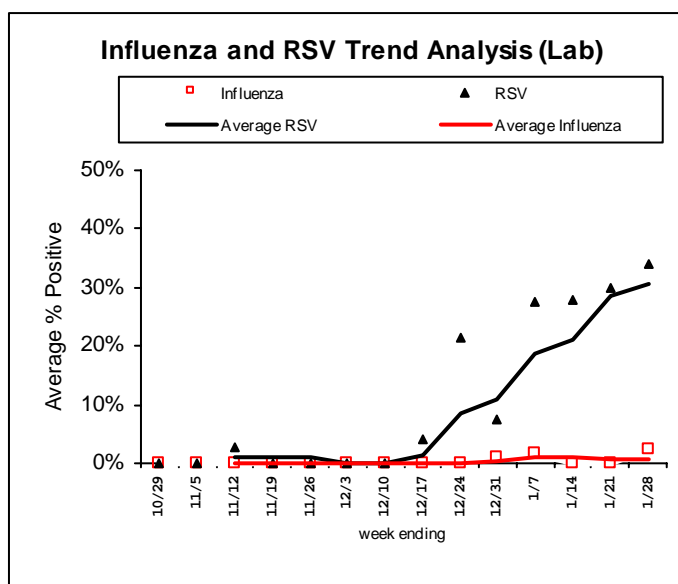
Southern Region (ILI activity is Low)

INFLUENZA RAPID ANTIGEN TESTS				RSV RAPID ANTIGEN TESTS			INFLUENZA-LIKE ILLNESS			
Tested	Positive			% Positive	Tested	Positive	% Positive	ILI %	Baseline	Threshold
	Flu A	Flu B	Total							
55	0	0	0	0.0%	57	22	38.6%	1.7%	4.3%	6.6%



Southeastern Region (ILI activity is Low)

INFLUENZA RAPID ANTIGEN TESTS				RSV RAPID ANTIGEN TESTS			INFLUENZA-LIKE ILLNESS			
Tested	Positive			% Positive	Tested	Positive	% Positive	ILI %	Baseline	Threshold
	Flu A	Flu B	Total							
131	2	1	3	2.3%	91	31	34.1%	3.6%	3.3%	5.5%



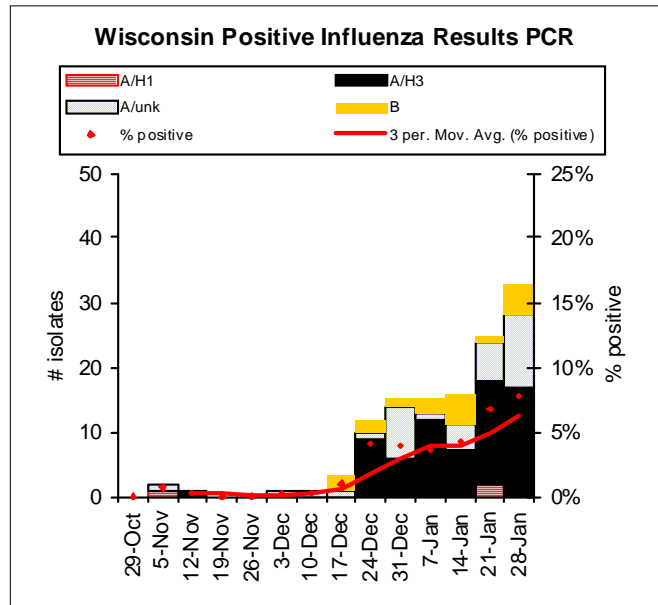
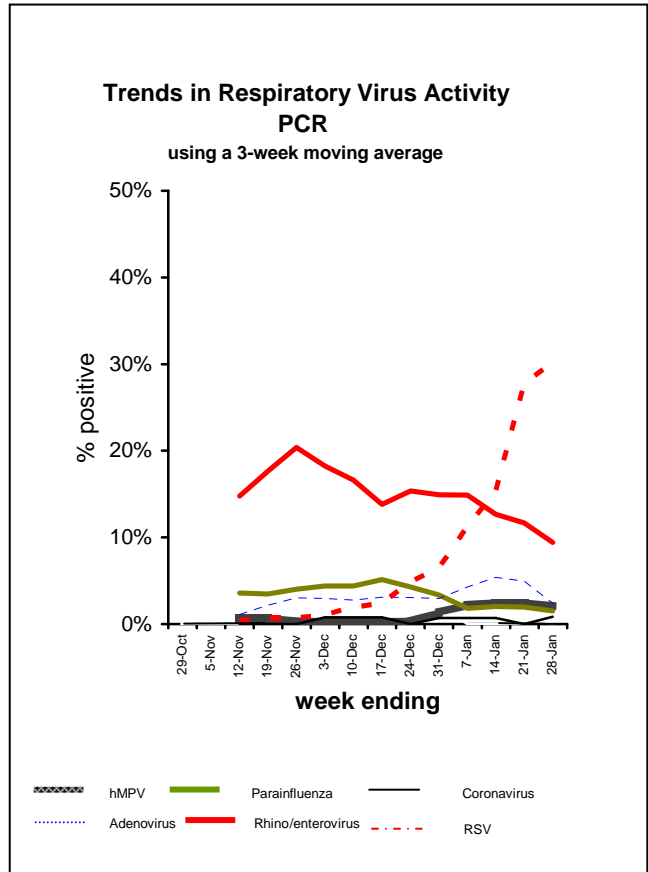
LABORATORY SURVEILLANCE FOR RESPIRATORY VIRUSES (PCR)

Respiratory Agent	Tested	Positive	% Positive	Flu A (H1)	Flu A (H3)	Flu A (Unk)	Flu B
Influenza	425	33	7.8%	0	17	11	5

Respiratory Agent	Tested	Positive	% Positive	P1	P2	P3	P4
Parainfluenza	144	0	0.0%	0	0	0	0

Respiratory Agent	Tested	Positive	% Positive	CoV-229E	CoV-OC43	CoV-NL63	CoV-HKU1
Coronavirus	39	1	2.6%	0	0	0	1

Respiratory Agent	Tested	Positive	% Positive
RSV	185	44	23.8%
Human Metapneumovirus	68	1	1.5%
Rhino-entero	53	2	3.8%
Adenovirus	53	0	0.0%



Cumulative number of positive influenza tests
By subtype, October 1, 2011 to present

	2009 A/H1	A/H3	A/Unknown	B	Total
Total Number positive	3	70	15	16	104
% of Total number positive	3%	67%	15%	15%	100%

Influenza-associated Hospitalizations, October 1, 2011 to present

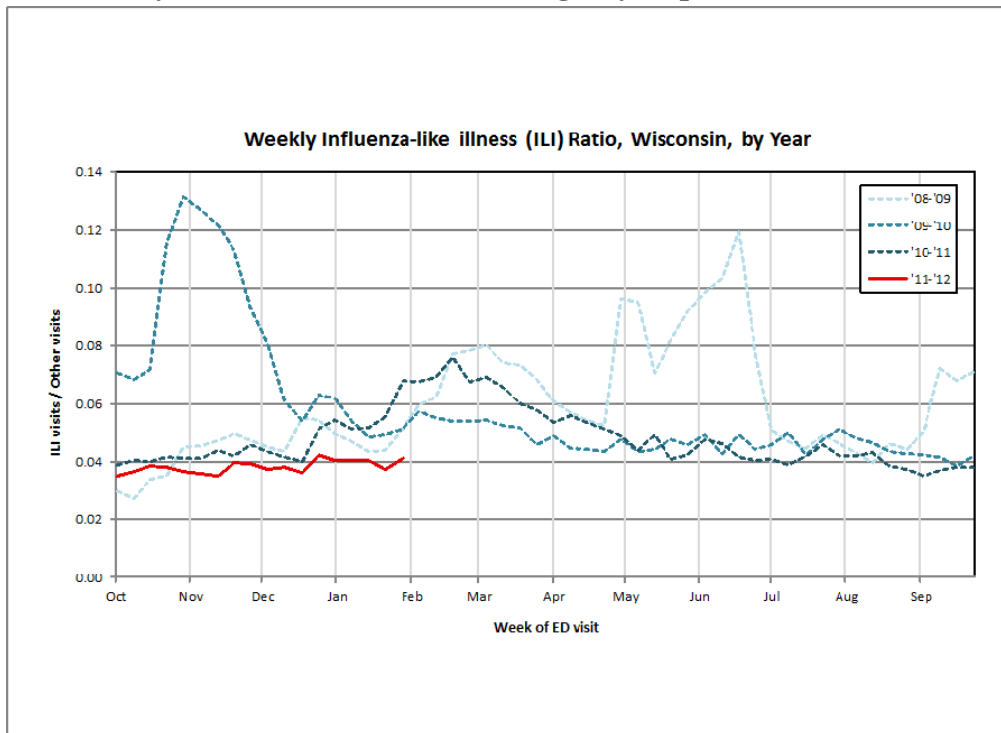
New hospitalizations this week 0

Age Group	Total Number Reported (year)	Influenza Subtypes				Admitted to ICU	Required Mechanical Ventilation
		A/H1	A/H3	A/Unknown	B		
< 1 year	0	0	0	0	0	0	0
0 to 4*	1	0	1	0	0	0	0
5 to 17	0	0	0	0	0	0	0
18 to 49	1	0	0	1	0	1	1
50 to 64	2	1	1	0	0	0	0
65 and over	0	0	0	0	0	0	0
Total	4	1	2	1	0	1	1

Influenza Hospitalizations, by week and age group Cumulative rate /100,000

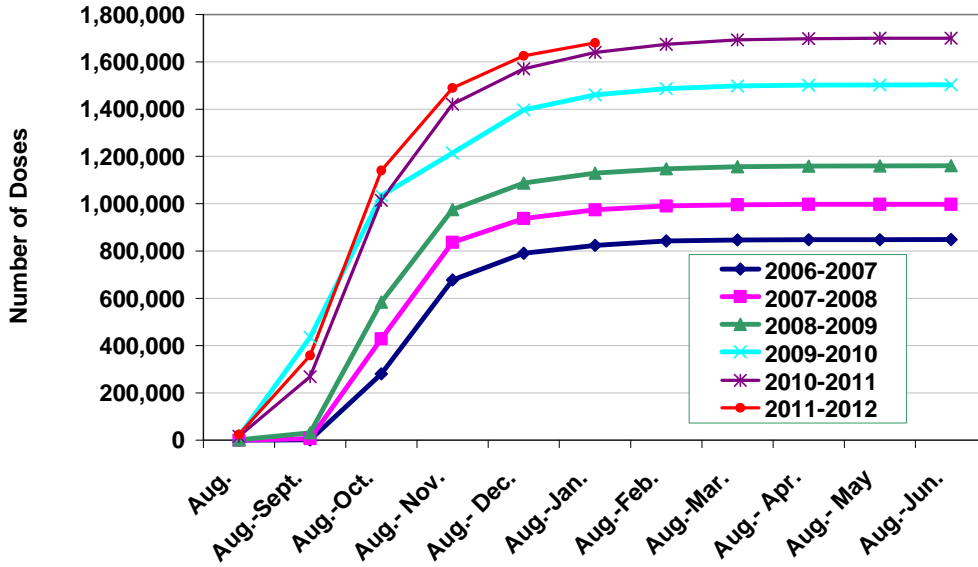
This graph will be updated as the season progresses

Syndromic Surveillance, Emergency Department Data



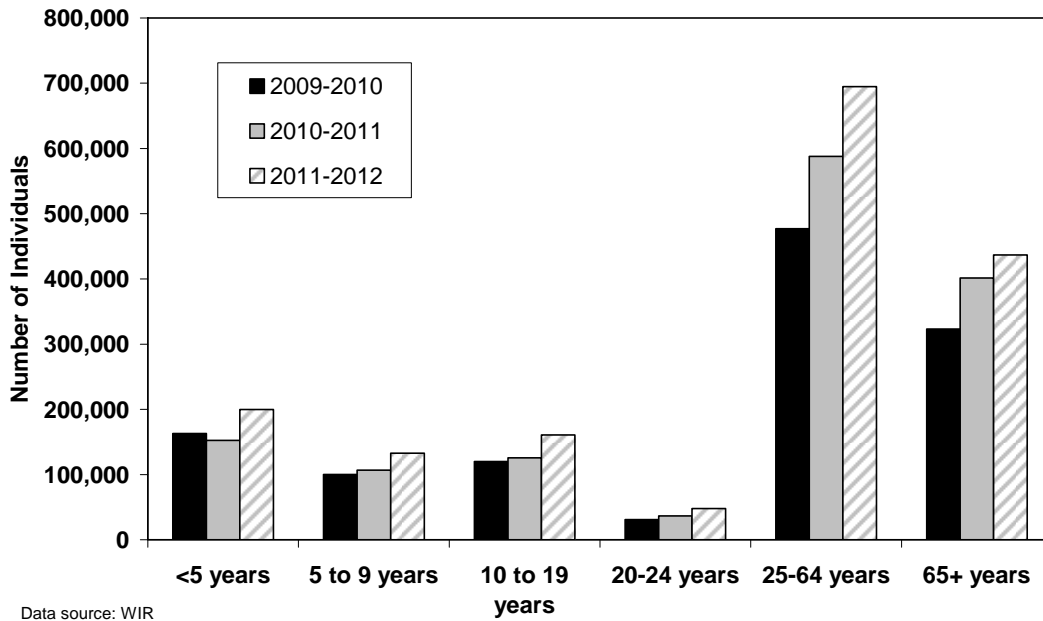
Seasonal Influenza Vaccination in Wisconsin Based on doses reported to the Wisconsin Feb. 2, 2012

**Cumulative Doses of Seasonal Influenza Administered and Reported to the WIR,
2006-2012 Influenza Seasons**



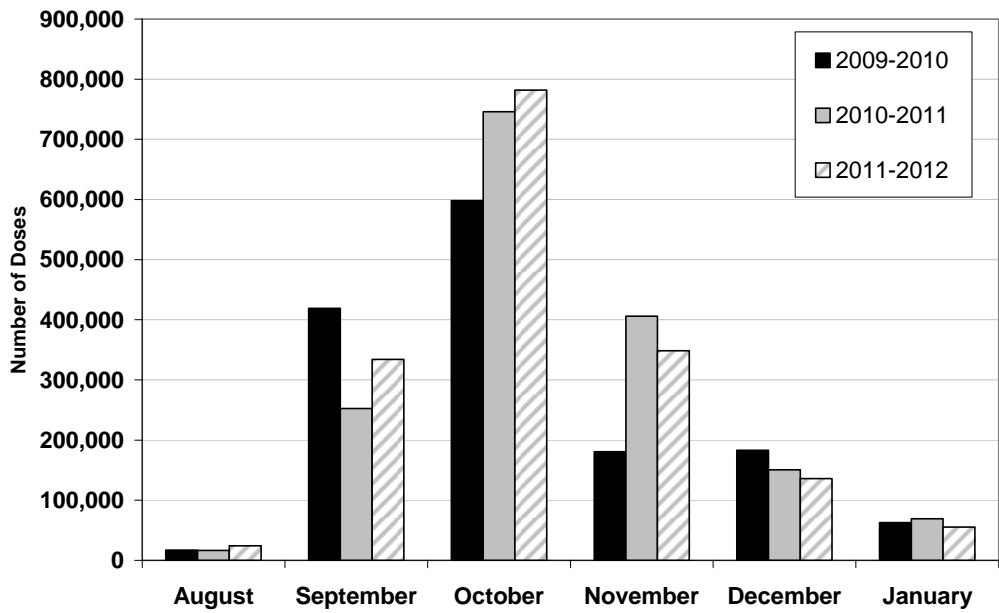
Data source: WIR
Data as of 2.1.12

**Number of Individuals Vaccinated and Between Aug-Nov by Age Group for
Seasonal Influenza as Reported to the WIR, 2009-2011**



Data source: WIR
201-2012 data as of 2.1.12

Number of Doses of Seasonal Influenza Vaccine Administered and Reported to the WIR, by Month for Influenza Seasons 2009-2012



*Data source: WIR,
2011 data as of 2.1.12

- These graphs include only doses of seasonal influenza vaccine administered and reported to the Wisconsin Immunization Registry (WIR).
- Data for 2011-2012 season is incomplete because of the expected lag between the vaccine administration date and the date reported to the WIR, which may be as short as one day or as long as several months, depending on the submitter. Therefore, the current season's data will be adjusted as additional data is received.
- While use of the WIR is not mandatory, the WIR receives data from a variety of sources, including health care providers, health maintenance organizations, local health departments and tribal health centers/clinics, schools and pharmacies.
- For additional information regarding the immunization data, please contact Stephanie Schauer, epidemiologist, with the Wisconsin Immunization Program at (608) 264-9884.

NATIONAL INFLUENZA SURVEILLANCE

