

FACE Program Fact Sheet

Fatality Assessment and Control Evaluation

Department of Health and Family Services * Division of Public Health
Bureau of Occupational Health * 1 W. Wilson St. * PO Box 2659
Madison, WI 53701-2659 * (608) 266-7298

Publication Number PPH 44034

Road Construction Worker Run Over by Dump Truck

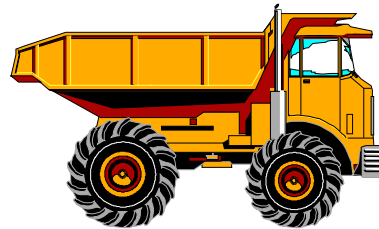
BACKGROUND

The Wisconsin Fatality Assessment and Control Evaluation (FACE) Program received reports of 102 reports of occupational fatalities that occurred in 2000. Eight of the victims were construction workers.

This fact sheet describes an incident where a road construction worker died in a highway work zone. Help save lives by passing this information along to road construction companies, their workers and others who work around dump trucks.

THE INCIDENT

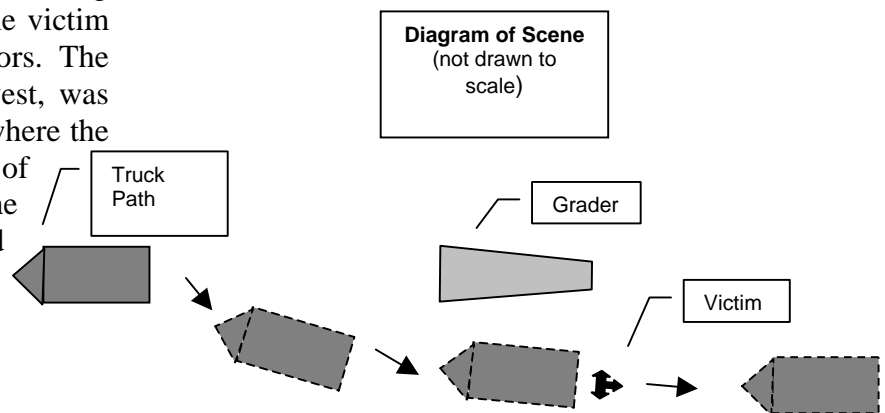
A 20-year-old construction laborer for a road construction company was pounding stakes into the roadbed next to where a dump truck had been laying gravel. A dump truck driver dumped a load of gravel, drove forward, and then backed up at an angle to avoid hitting a grader that was waiting to spread the gravel. The truck's back-up lights and alarms were working, and the driver was watching the mirrors on both sides of the truck. The victim was not in the view of the truck's mirrors. The victim, wearing an orange traffic safety vest, was crouching down with his back to the area where the truck was backing. He backed into the path of the moving truck, apparently unaware of the truck's presence. The grader operator tried to alert the truck driver by radio, but the signal didn't go through to the driver's radio. The truck driver then saw the victim's body in front of the truck. He was pronounced dead at the scene.



RECOMMENDATIONS

To prevent similar occurrences, road builders should:

- **develop and use an internal traffic control plan that coordinates the flow of vehicles, equipment, and workers within the activity area.**
- **design the workflow to minimize backing equipment.**
- **designate a spotter to direct vehicles that must back up within the workzone.**
- **equip vehicles with devices to detect the presence of individuals or objects behind backing vehicles.**



The Wisconsin Department of Health and Family Services, in agreement with the National Institute for Occupational Safety and Health (NIOSH) conducts research on occupational fatalities. The Fatality Assessment and Control Evaluation (FACE) Program focuses on identifying factors that increase the risk of work-related fatal injuries. The Wisconsin FACE Program helps in the development and use of improved safety measures for preventing fatal work injuries.

PLEASE POST

FACE information is produced and distributed to provide current, relevant education on methods to prevent severe work-related injuries.

If you have comments or questions, please call the FACE Project at 608/266-7298, or write:

**FACE Program
WI Department of Health and Family Services
Division of Public Health
P.O. Box 2659
Madison WI 53701-2659**