

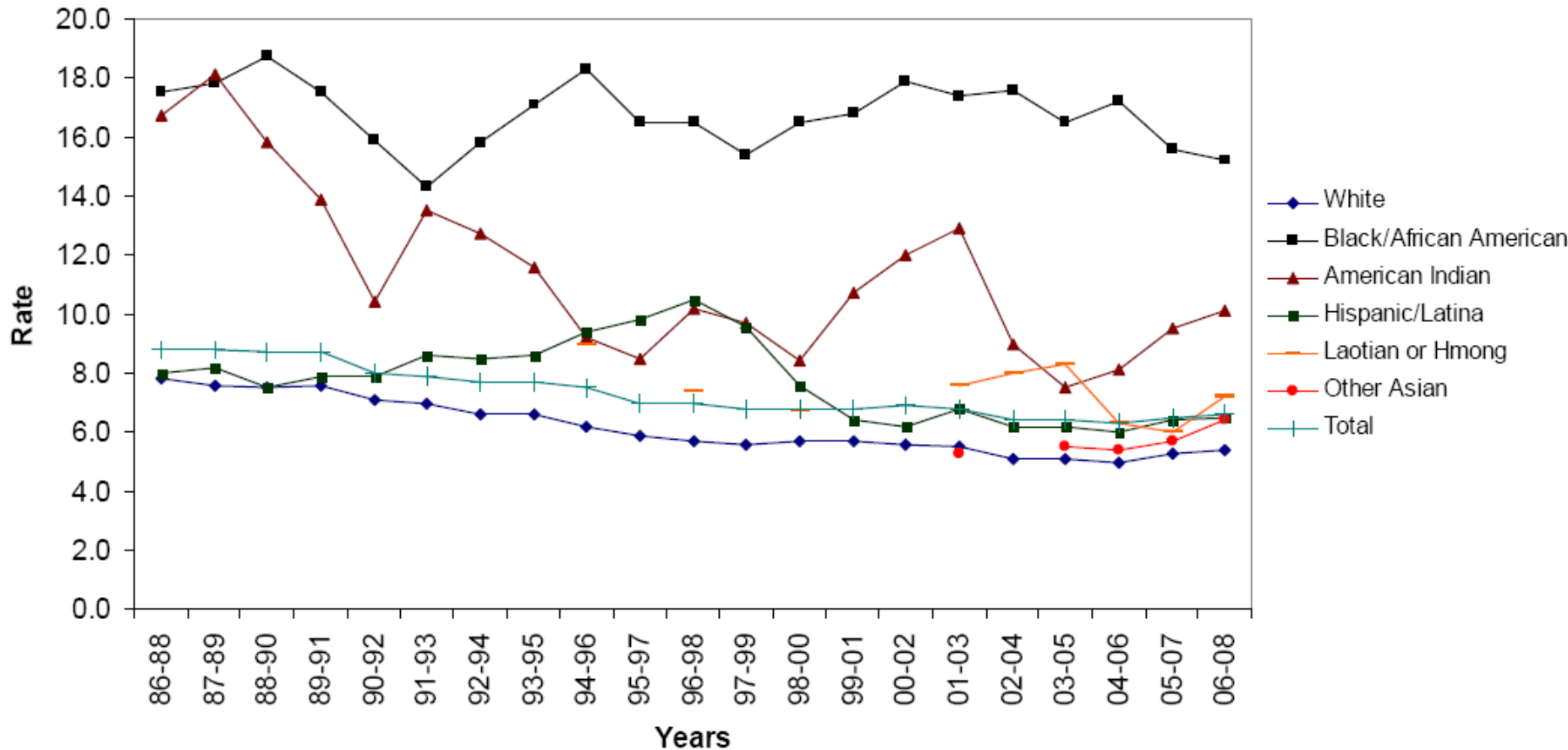
Where we've been and where we're going

”are we there....?”

**Statewide Advisory Committee on Eliminating
Racial and Ethnic Disparities in Birth Outcomes
July 1, 2010**

**Patrice M. Onheiber, MPA
Director, Disparities in Birth Outcomes
WI DHS/DPH**

Wisconsin Infant Mortality Rates by Race/Ethnicity, 1986-2008 (3-Year Rolling Averages)



African American Infant Mortality Rates, reporting states and DC, 2003-2005

U.S. African American IMR: 13.61 per 1,000 live births

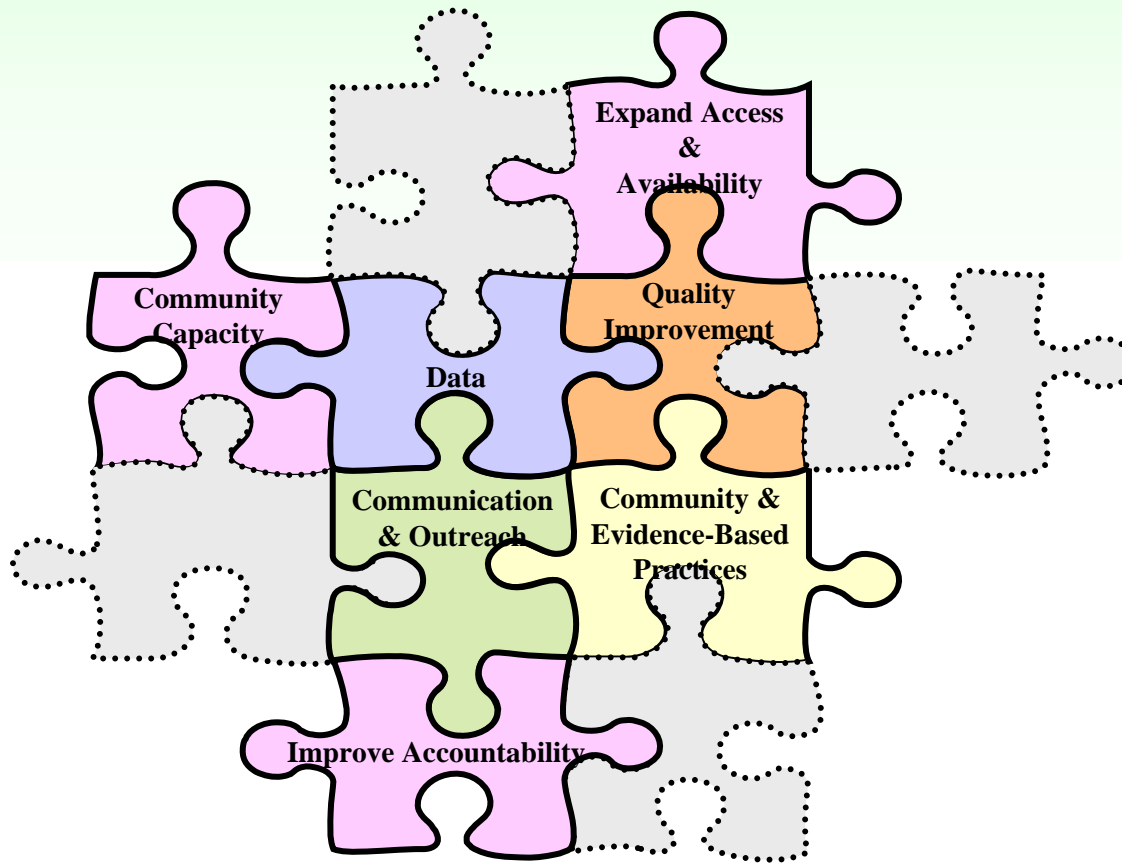
Rank	State	AA IMR
1	Oregon	8.58
2	Minnesota	8.86
3	Washington	8.96
4	Massachusetts	10.02
5	Rhode Island	10.80
6	Kentucky	10.92
7	Iowa	10.97
8	Arizona	11.22
9	California	11.40
10	New York	11.77
11	New Jersey	11.88
12	West Virginia	12.03
13	Nevada	12.23
14	Texas	12.41
15	Connecticut	12.68

Rank	State	AA IMR
16	Florida	12.92
17	Oklahoma	12.96
18	Georgia	13.27
19	Pennsylvania	13.55
20	Arkansas	13.58
21	Alabama	13.65
22	Maryland	13.66
23	Virginia	13.72
24	Missouri	13.85
25	Louisiana	13.94
26	Nebraska	14.01
27	South Carolina	14.22
28	Kansas	14.33
29	Indiana	15.11
30	Illinois	15.27

Rank	State	AA IMR
31	Hawaii	15.48
32	Mississippi	15.56
32	Ohio	15.56
34	North Carolina	15.77
35	Colorado	16.26
36	Tennessee	16.29
37	Michigan	16.38
38	Wisconsin	16.42
39	Delaware	16.80
40	District of Columbia	17.20

A Framework for Action to Eliminate Racial and Ethnic Disparities in Birth Outcomes

**Wisconsin
2008-2011**



**A Framework for Action to Eliminate Racial and Ethnic Disparities in Birth Outcomes
Wisconsin Department of Health Services
2008-2011 Update: July 2008**

A Response to the Crisis of Infant Mortality in Wisconsin

Recommendations

**Statewide Advisory Committee on Eliminating
Racial and Ethnic Disparities in Birth Outcomes
July 2009**

<http://dhs.wisconsin.gov/healthybirths/>



ABCs for Healthy Families

**Wisconsin Department of
Health Services in
partnership with**

**New Concept Self
Development Center, Inc.
and Jump at the Sun
Consultants, LLC**

HRSA First Time Motherhood/New
Parents Initiative

Community Advisory Board

Purpose:

- To provide a forum for community and family members to participate in the planning, implementation, and evaluation of *ABCs for Healthy Families: A Social Marketing Campaign for the Integration of the Life Course Perspective*.

Composition:

- social services agencies
- health providers
- Community advocates
- Mothers, fathers, students, parents, retired nurse, etc.





JOURNEY of a **LIFETIME**
Healthy Babies through Healthy Families



**Let's deal with
stress in ways
that don't stress
our babies**

text "NoStress" to 32075

myspace.com/JourneyofaLifetime

Data: (Annually track by race, ethnicity, and geographic location)

❖ **African American Infant Mortality**

19.2 (2004) 15.0 (2005) 17.2 (2006) 14.5 (2007) 13.8 (2008)

❖ **Birth outcomes**

- **Low birth weight: 13% of African American vs. 6% white**
- **Gestational age/prematurity: ↓16%-17% of African American births vs. 10% white**

❖ **Community supports and risks**

- **Poverty status**
- **High school completion rate**
- **Employment status**

❖ **Maternal health status**

- **One chronic condition** (e.g., hypertension or diabetes)
- **One behavioral risk factor** (e.g., tobacco): **↓15%-16%** of African American births vs. **↑14%-16%** white

Evidence-Based Practice Workgroup Topics

Medical:

- ❖ Anemia
- ❖ Bacterial Vaginosis
- ❖ Chronic Diseases
- ❖ Gestational Diabetes
- ❖ Group B β -Strep
- ❖ HIV
- ❖ Hypertension of Pregnancy
- ❖ Immunizations
- ❖ 17 alpha-hydroxyprogesterone (17-P) for Previous Preterm Birth
- ❖ Mental Health/Depression
- ❖ Preconception/Interconception Care/ Interpregnancy Interval
- ❖ Sexually Transmitted Infections
- ❖ Urinary Tract Infections

Non-medical:

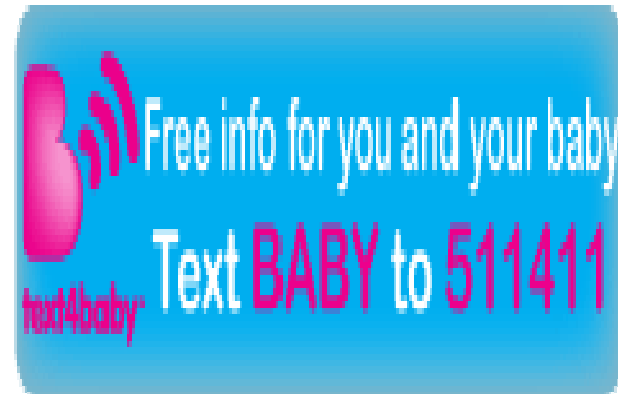
- ❖ Alcohol and other drug use
- ❖ Breastfeeding
- ❖ Community Health Worker/Doula/Home Visitor
- ❖ Domestic Violence
- ❖ Fatherhood
- ❖ Malnutrition/Underweight
- ❖ Oral Health
- ❖ Patient Education/Health Literacy
- ❖ Preterm Labor Awareness and Fetal Movement Recognition
- ❖ Racism
- ❖ SUID/SIDS
- ❖ Tobacco
- ❖ Unintended Pregnancy

Action Learning Collaborative

- **Partnership to Eliminate Disparities in Infant Mortality (PEDIM)**
- **Racism and Fatherhood in Milwaukee**
 - Community Education/Training
 - Empowerment Coaching Pilot Project
 - Promote positive media images of men of color



Social Marketing: Next Steps



Data: Next Steps

- Annual Infant Mortality Fact Sheet
- HW 2020 Infant Mortality Objective
- DHS/DPH Priorities and Performance Measures
- Title V MCH Outcome Measure
- PRAMS
- FIMR
- Maternal Mortality

Evidence-based practices

Next steps

- **DHCAA-DPH Workgroup**
 - **HMO medical home pilot for Healthy Birth Outcomes and pay-for-performance measures**
 - **HMO Best Practice Seminars**
- **DPH/MCH-Federal TA on Wisconsin Preconception Initiative**

Policy and Funding

Next Steps

- **Action Learning Collaborative Plan-
Racism and Fatherhood**
- **Legislative Study Committee on Infant
Mortality**
- **Federal and State Home Visiting and
Project LAUNCH**
- **LIHF MCH Collaboratives in Milwaukee,
Racine, Kenosha, and Beloit**
- **HW 2020**
- **Participant in national dialogue**

Statewide Advisory Committee Next Steps



dhs.wisconsin.gov/healthybirths/