

Office of Plan Review and Inspections



Your Speaker

David Soens

- Director
- Office of Plan Review and Inspections
- Licensed Professional Mechanical Engineer and Registered Architect
- 20 plus years of experience with building and construction industry
- Previously the DHS Fire Authority / Lead Engineer overseeing construction plan review, inspections, code development, interpretations, and variance approvals



Agenda

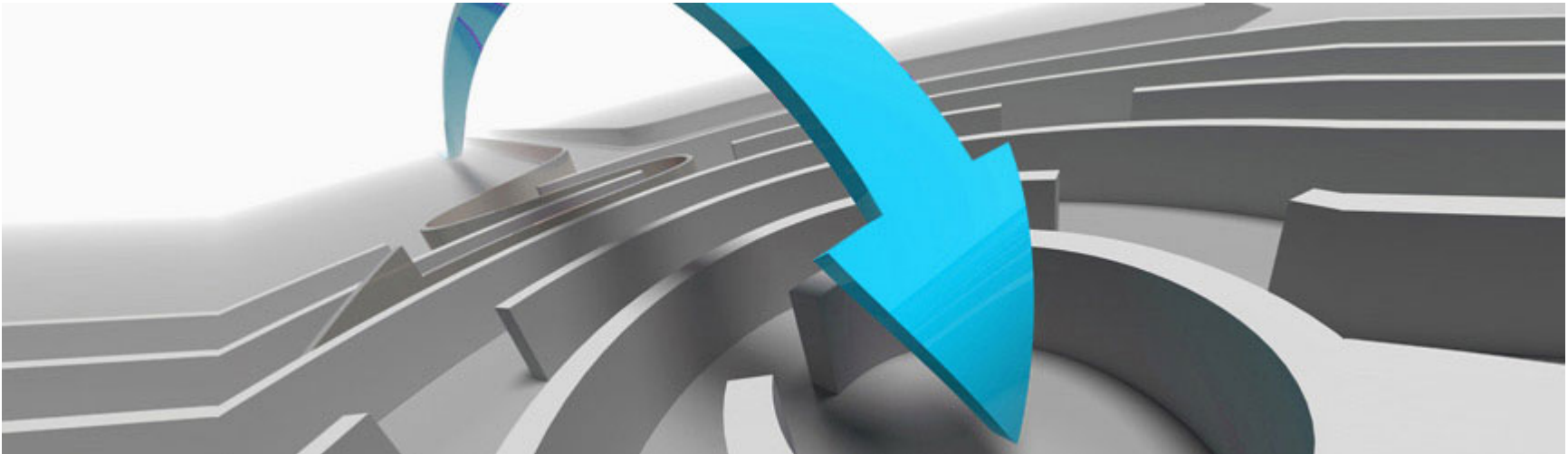
- History
- Formation
- Goals
- Team Work



Objectives

At the end of this session, you will be able to:

- Understand the historical changes of the Division
- Describe the primary duties of the Office of Plan Review and Inspections
- Explain why team work is critical for true compliance

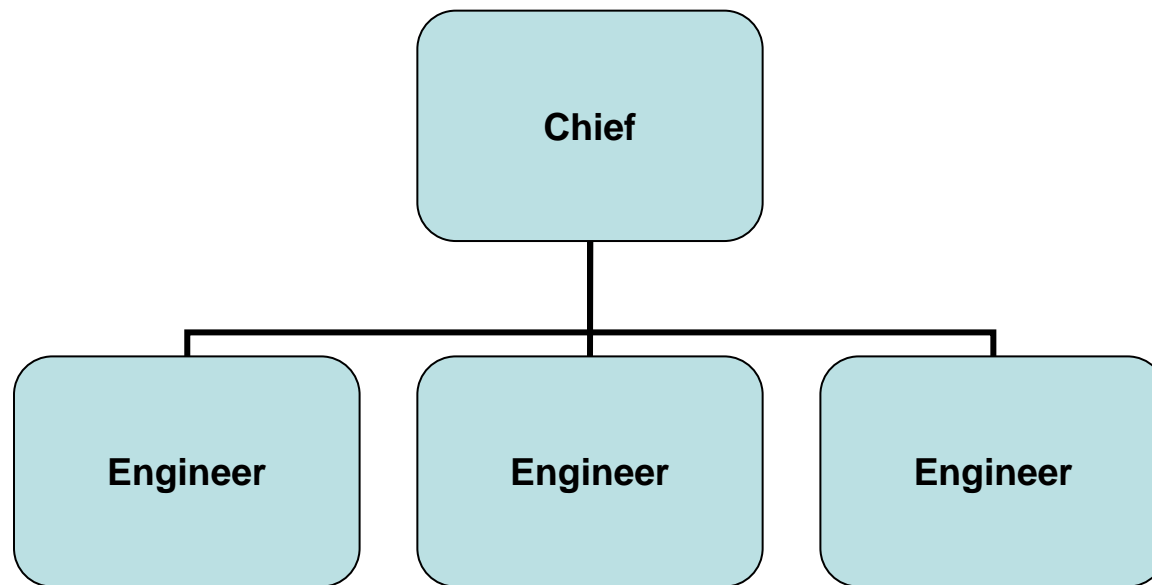




History

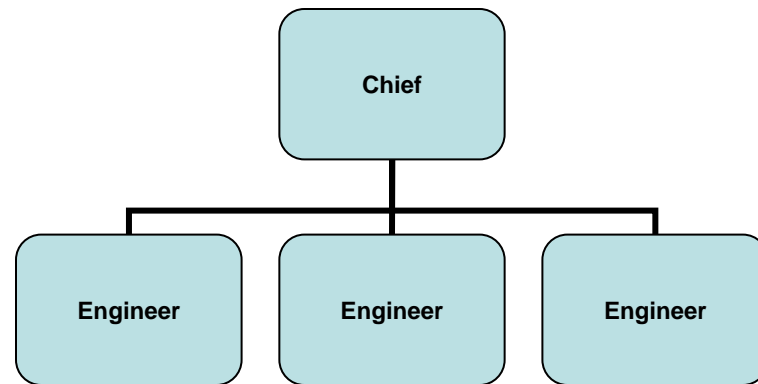
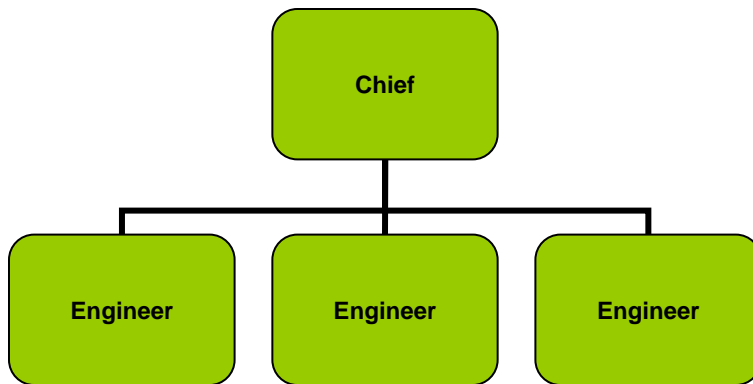
History

- Facility Needs Section



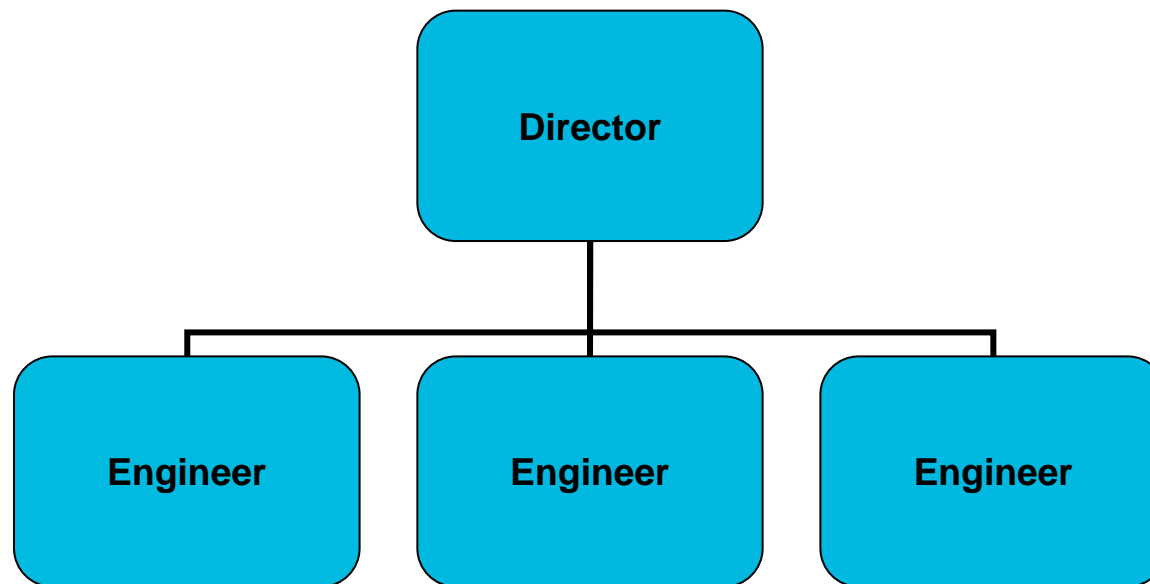
History

- Bureau of Quality Assurance
- Hospital Section
- Long Term Care Section



History

- Office of Plan Review and Inspections
- Maintain regional offices
- Hybrid





Formation

Formation

- Division Administration
- Supervisors
- Recommendation



Responsibilities

- **Plan review** (hospitals, nursing homes, and assisted living)
 - Building Code
 - Life Safety Code
 - Arch, Struct, Mech, Energy, Access

- **Inspections** (hospital, nursing homes, and assisted living)
 - Building Code
 - Life Safety Code
 - Arch, Struct, Mech, Energy, Access

- **Surveys** (Federal providers: hospitals and nursing homes)
 - Life Safety Code
 - Arch, Mech





Goals

Goals

■ Short Term

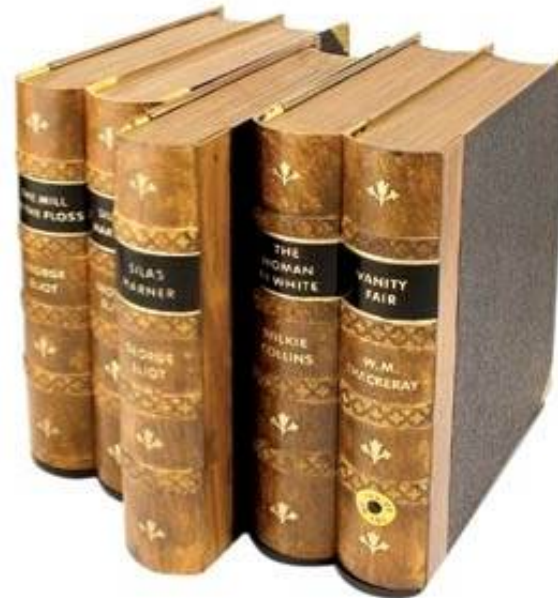
- Logistics
- Data

■ Mid Term

- Assessments
- Staff input

■ Long Term

- Generalist vs Specialist
- Scope Control
- Consistency
- Discipline





Teamwork

Teamwork

- Facility
- Designers
- Contractors
- Regulators
- Operators



Summary

- Historical changes of the Division
- Primary duties of the Office of Plan Review and Inspections.
- Teamwork is critical to effective compliance



Any Questions?

Please use the Chat feature



**Office of Plan
Review and
Inspections**

