
Wisconsin Youth Sexual Behavior and Outcomes 1993-2007 Update

February 2009

*Bureau of Health Information and Policy
Division of Public Health
Wisconsin Department of Health Services*

Foreword

This is the fourth edition of a publication that was created in a joint effort between the Department of Health Services (DHS) and the Department of Public Instruction (DPI) to ensure consistency and reliability of Wisconsin data related to sexual risk behaviors that can result in unintended pregnancy and the transmission of sexually transmitted diseases and HIV. The intent of the publication is to aid in the use of data in program development and evaluation among Wisconsin agencies and organizations implementing programs to prevent sexual risk behaviors among school-age youth. Funds for developing this report were provided by a grant from the Centers for Disease Control and Prevention (CDC) to the Department of Public Instruction, a Coordinated School Health Program Grant to Improve the Health, Education, and Well-Being of Young People.

This edition of the report covers the data years 1993-2007, and includes the latest available data (2007) from the Youth Risk Behavior Survey, sexually transmitted disease cases, HIV cases, and teen births. Most of the 2007 Youth Risk Behavior Survey data in this edition was also included in the previous version of this report (released in February 2008).

The Department of Health Services produced this publication. Patricia Nametz, Anne Ziege, Laura Ninneman, and Yiwu Zhang of the Bureau of Health Information and Policy, Division of Public Health (DPH), prepared the report under the supervision of Chris Hill, Chief, Population Health Information Section, and the overall direction of Patricia Guhleman, Director, Bureau of Health Information and Policy. Claude Gilmore, DHS Youth Policy Director, is the DHS contract administrator for the CDC-DPI Coordinated School Health Program Grant; he and others in DPH assisted in the report's creation.

Brandon Kufalk in the Wisconsin Sexually Transmitted Disease Program, DPH, provided numbers of reported cases of sexually transmitted diseases. Mari Gasiorowicz and Neil Hoxie of the AIDS/HIV Program, DPH, provided numbers and rates of reported cases of AIDS/HIV. The Department of Public Instruction provided data from the Wisconsin Youth Risk Behavior Survey. In the Bureau of Health Information and Policy, Laura Ninneman prepared the data on births and Karl Pearson provided population estimates used to calculate rates.

Additional statistical information is available on the Department of Health Services Web site at <http://dhs.wisconsin.gov/stats/>. Wisconsin Interactive Statistics on Health (WISH) is a data query system that allows users to obtain birth and other data tailored to their specifications, at <http://dhs.wisconsin.gov/wish/>. More information on sexually transmitted diseases in Wisconsin can be found at <http://dhs.wisconsin.gov/communicable/STD/INDEX.HTM>. Data from the Youth Risk Behavior Survey is available on the DPI Web site at <http://dpi.wi.gov/sspw/yrbsindx.html>.

This report is available online at <http://dhs.wisconsin.gov/stats/s-behyouth.htm>.

Comments, suggestions and requests for further information may be addressed to:

Bureau of Health Information and Policy

Division of Public Health

P.O. Box 2659, Room 172

Madison WI 53701-2659

E-mail: DHSBHIP@wisconsin.gov

Suggested citation:

Wisconsin Department of Health Services, Division of Public Health, Bureau of Health Information and Policy. *Wisconsin Youth Sexual Behavior and Outcomes, 1993-2007—Update* (P-45706-07b). February 2009.

Contents

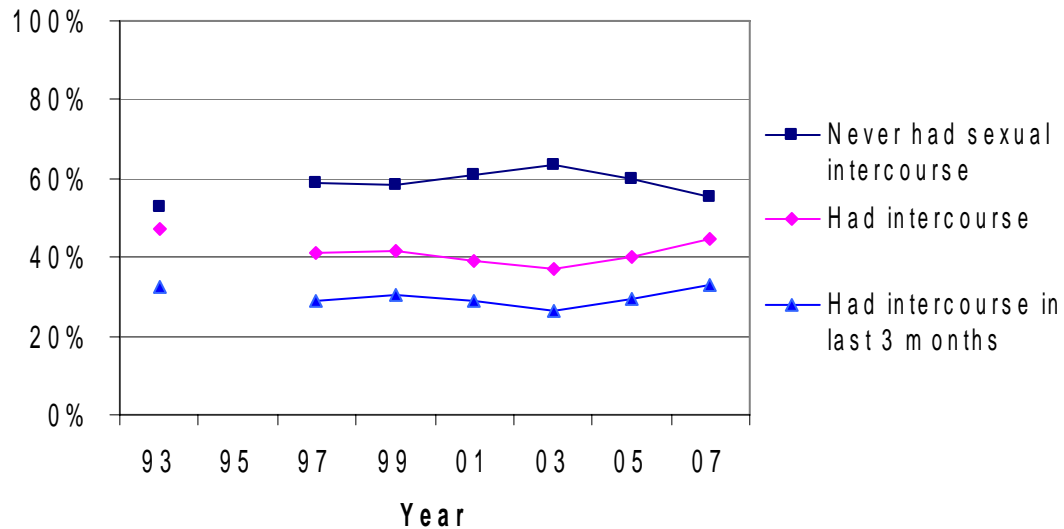
Foreword	ii
Key Findings	iv
Trend Information	1
Sexual Behavior	1
Sexually Transmitted Diseases	5
Births to Teens	16
Data Tables	20
Sexual Behavior	20
Sexually Transmitted Diseases	23
Births to Teens	31
Technical Notes: Data Sources and Definitions	35

Key Findings

- The percent of Wisconsin high school students who reported never having had sexual intercourse rose to a high of 63 percent in 2003, then decreased to 55 percent in 2007. Conversely, the percent of high school students who reported ever having had sexual intercourse reached a low of 37 percent in 2003, then increased to 45 percent in 2007.
- The percent of high school students who said they discussed AIDS or HIV infection with adult family members decreased from 58 percent in 1993 to 40 percent in 2007.
- Among students who reported having had sexual intercourse in the last three months, condom use increased from 58 percent (in 1993) to 65 percent (in 2003 and 2005). It was 61 percent in 2007.
- Chlamydia is the predominant sexually transmitted infection among youth. The rate of chlamydia infections among teens increased 26 percent from 1993 to 2007, from 1,364 cases per 100,000 population aged 15-19 to 1,717 cases per 100,000.
- The overall rate of four sexually transmitted diseases (chlamydia, gonorrhea, syphilis, and genital herpes combined) among African American youth declined from 15,127 cases per 100,000 population aged 15-19 in 1993 to 12,533 per 100,000 in 2007, a decrease of 17 percent. Most of this decline occurred by 1997, when the rate reached a low of 8,157 cases per 100,000.
- In 1993 the rate of these four STDs among African American youth in Wisconsin was 7 times higher than the rate for all Wisconsin youth. The magnitude of the African American disparity declined to 5.2 times the rate for all youth in 2007.
- Of the 59 cases of HIV reported among youth aged 15-19 in Wisconsin from 2004 to 2007, male-to-male sexual contact accounted for 62 percent of cases.
- Wisconsin rates of reported HIV per 100,000 population among young people aged 15-24 show significant race/ethnicity disparities. Rates are more than 13-fold and five-fold higher for African Americans and Hispanics, respectively, compared to non-Hispanic whites.
- Trend data for reported HIV among people aged 15-24 show increases since 2000 in the number of cases among men who have sex with men. In contrast, cases among people reporting heterosexual contact or injection drug use have declined in recent years.
- Of the approximately 200 adjusted cases of HIV reported in 2004-2007 among young men (ages 15-24) who have sex with men, 43 percent occurred among African Americans, followed by 37 percent among whites, 16 percent among Hispanics/Latinos, and 3 percent among other race/ethnicity groups.
- Wisconsin's overall teen birth rate (births per 1,000 females aged 15-19) declined steadily from 1993 to 2004, as did birth rates among both older teens (aged 18-19) and younger teens (aged 15-17). This decline in teen birth rates ended in 2005. The teen birth rate increased in 2006 and 2007.
- The number of births to Wisconsin teens aged 15-19 decreased from 7,057 in 1993 to 6,240 in 2007. The teen birth rate decreased 22 percent, from 41 births per 1,000 females aged 15-19 to 32 per 1,000.
- From 1993 to 2007, the birth rate for 15-19-year-olds decreased for all racial/ethnic groups in Wisconsin except American Indians and Hispanics/Latinos.

Sexual Behavior

Figure 1. Percent of Wisconsin High School Students Who Reported Having Had Sexual Intercourse, 1993-2007



Source: Wisconsin Youth Risk Behavior Survey, Department of Public Instruction.

Note: See Table 1, page 20, for the data in this figure.

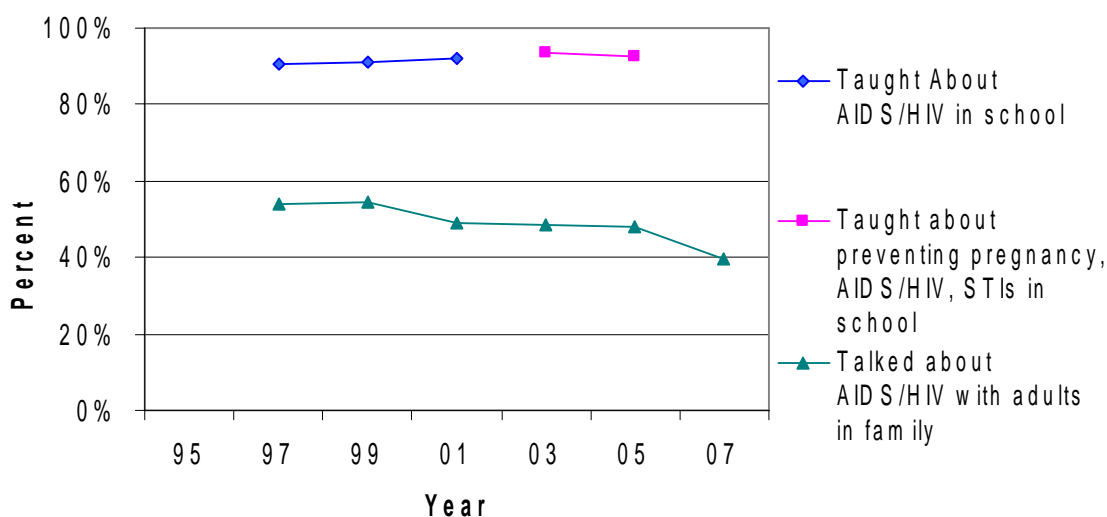
High school students were asked these questions:

“Have you ever had sexual intercourse?”

“During the past three months, with how many people have you had sexual intercourse?”

- The percent of Wisconsin high school students who reported never having had sexual intercourse rose to a high of 63 percent in 2003, and decreased to 55 percent by 2007.
- The percent of high school students who reported ever having had sexual intercourse declined from 47 percent in 1993 to a low of 37 percent in 2003, and increased to 45 percent in 2007.
- The percent of high school students who reported having had sexual intercourse with at least one partner in the last three months declined from 33 percent in 1993 to a low of 27 percent in 2003, and rose again to 33 percent by 2007.
- Since 2003, there appears to be an emerging upward trend in both the proportion of students who report having ever had intercourse and the proportion who report having had intercourse in the past three months. There is a corresponding drop in the proportion who report never having had intercourse.

Figure 2. Percent of Wisconsin High School Students Who Reported Being Taught About AIDS/HIV at School or Home, 1993-2007



Source: Wisconsin Youth Risk Behavior Survey, Department of Public Instruction.

Note: See Table 2, page 21, for the data in this figure.

High school students were asked the following questions:

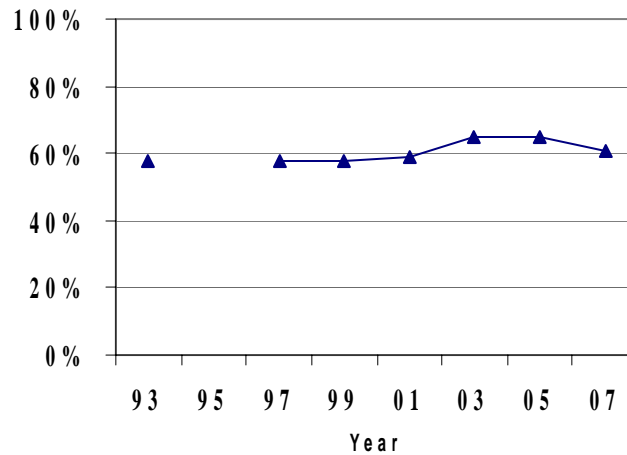
In 1993, 1997, 1999, and 2001: “Have you ever been taught about AIDS/HIV in school?”

In 2003, 2005: “Have you ever been taught about ways to prevent pregnancy, AIDS/HIV, or other sexually transmitted diseases in school?”

In 1993, 1997, 1999, 2001, 2003, 2005 and 2007: “Have you ever talked about AIDS or HIV infection with your parents or other adults in your family?”

- The percent of high school students who said they were taught about AIDS/HIV in school increased from 84 percent in 1993 to 92 percent in 2001.
- The survey question was modified in 2003 to include education on prevention of pregnancy and sexually transmitted diseases. The percent of high school students who reported they had been taught about ways to prevent AIDS/HIV, pregnancy, or sexually transmitted diseases was 94 percent in 2003 and 93 percent in 2005.
- The percent of high school students who said they discussed AIDS or HIV infection with adult family members decreased from 58 percent in 1993 to 40 percent in 2007.

Figure 3. Condom Use among Wisconsin High School Students Who Have Had Intercourse in Past Three Months, 1993-2007



Source: Youth Risk Behavior Survey, Department of Public Instruction.

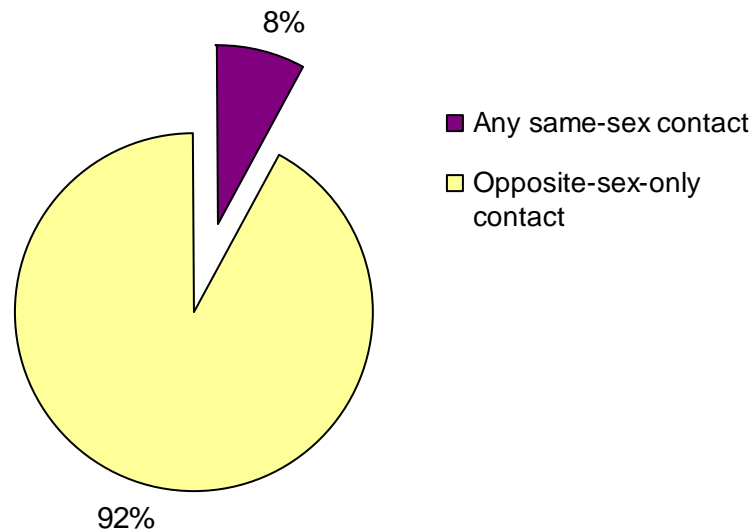
Note: See Table 3, page 22, for the data in this figure.

High school students were asked this question in 1993, 1997, 1999, 2001, 2003, 2005 and 2007:

Of those who have had sex within the last three months: "Did you or your partner use a condom the last time you had sexual intercourse?"

- Among students who reported having had sexual intercourse in the last three months, condom use increased from 58 percent in 1993, 1997 and 1999 to 65 percent in 2003 and 2005. It was 61 percent in 2007.

Figure 4. Same-Sex Sexual Contact among Wisconsin High School Students Who Have Ever Had Sexual Contact, 2007



Source: Youth Risk Behavior Survey, Department of Public Instruction.

Note: See Table 4, page 22, for the data in this figure.

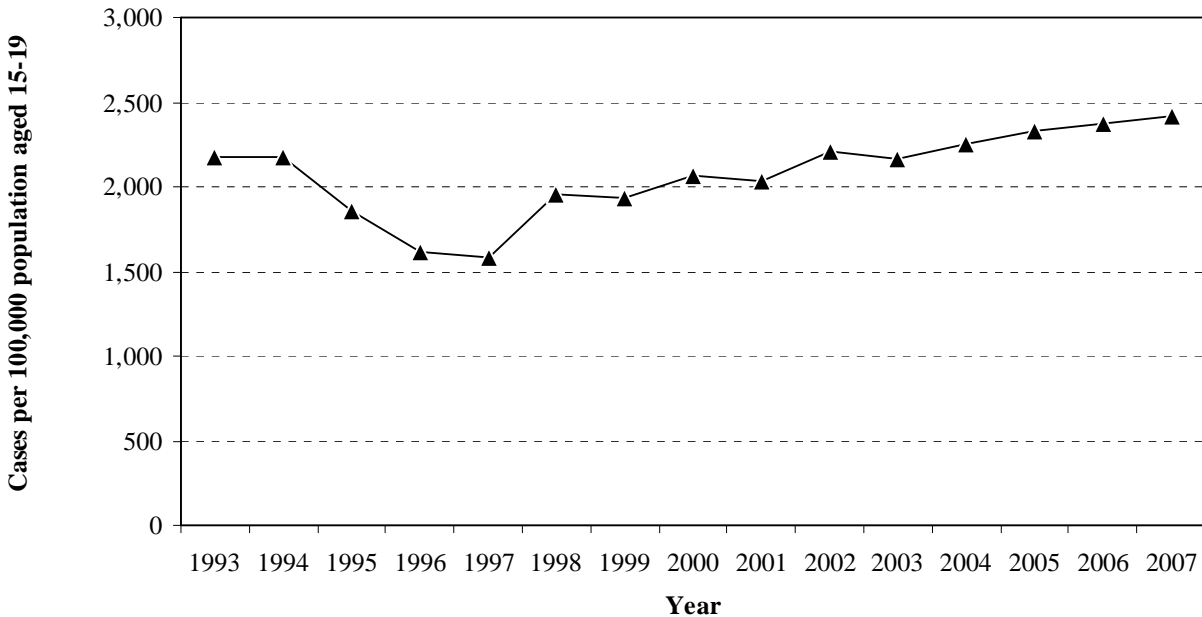
High school students were asked this question in 2007: “During your life, with whom have you had sexual contact?” Possible responses were:

- I have never had sexual contact
- Females
- Males
- Females and males

- Among high school students who reported any sexual contact during their lives, 8 percent reported having engaged in sexual activity with a person of the same sex. This represents 5 percent of all high school students, including those who have had no sexual contact. Given the stigma against sexual minority youth in many schools, the results probably underestimate the extent of same-sex behavior among high school youth.
- 2007 was the first year a question on this topic was included in the survey. There were too few cases to report reliable results separately for males and females.

Sexually Transmitted Diseases

Figure 5. Overall Rate of Selected STDs (Chlamydia, Gonorrhea, Syphilis, Genital Herpes) Reported Among Wisconsin Teens Aged 15-19, 1993-2007

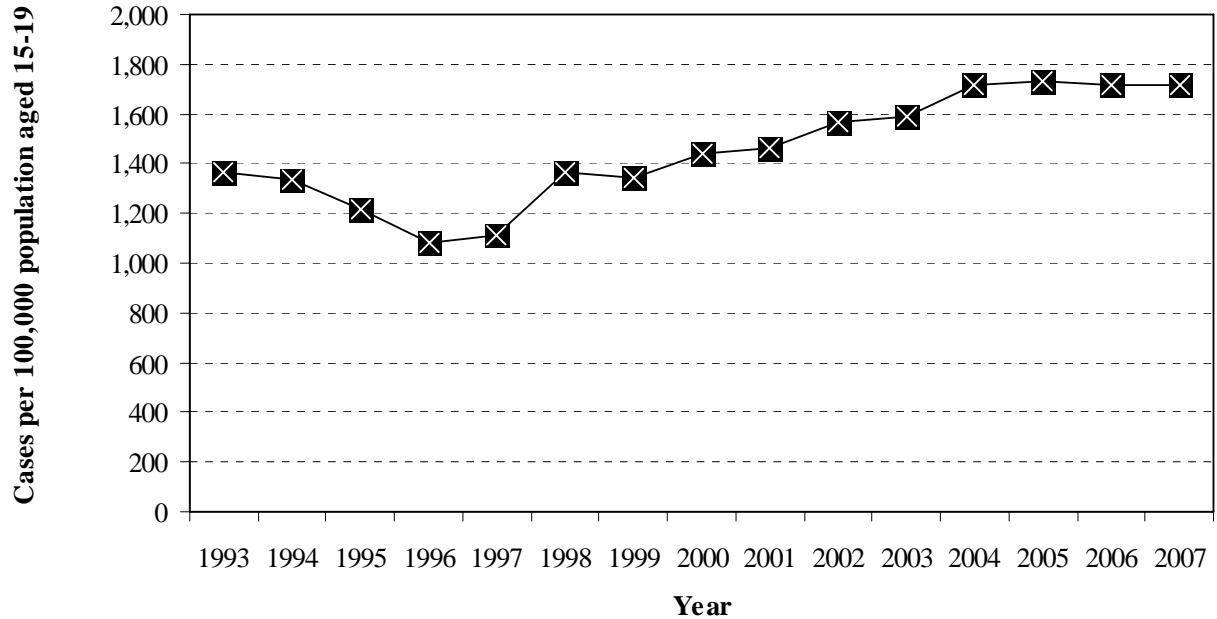


Source: STD case surveillance, Bureau of Communicable Diseases, Division of Public Health, Department of Health Services.

Note: See Table 5, page 23, for the data in this figure.

- From 1993 to 2007, the overall rate of four sexually transmitted diseases (chlamydia, gonorrhea, syphilis, and genital herpes) among teens increased 11 percent, from 2,177 cases per 100,000 population aged 15-19 in 1993 to 2,417 cases per 100,000 in 2007.
- The overall rate of these STDs among teens decreased 27 percent from 1993 to 1997, then increased 53 percent from 1997 to 2007.

Figure 6. Rate of Chlamydia Reported Among Wisconsin Teens Aged 15-19, 1993-2007

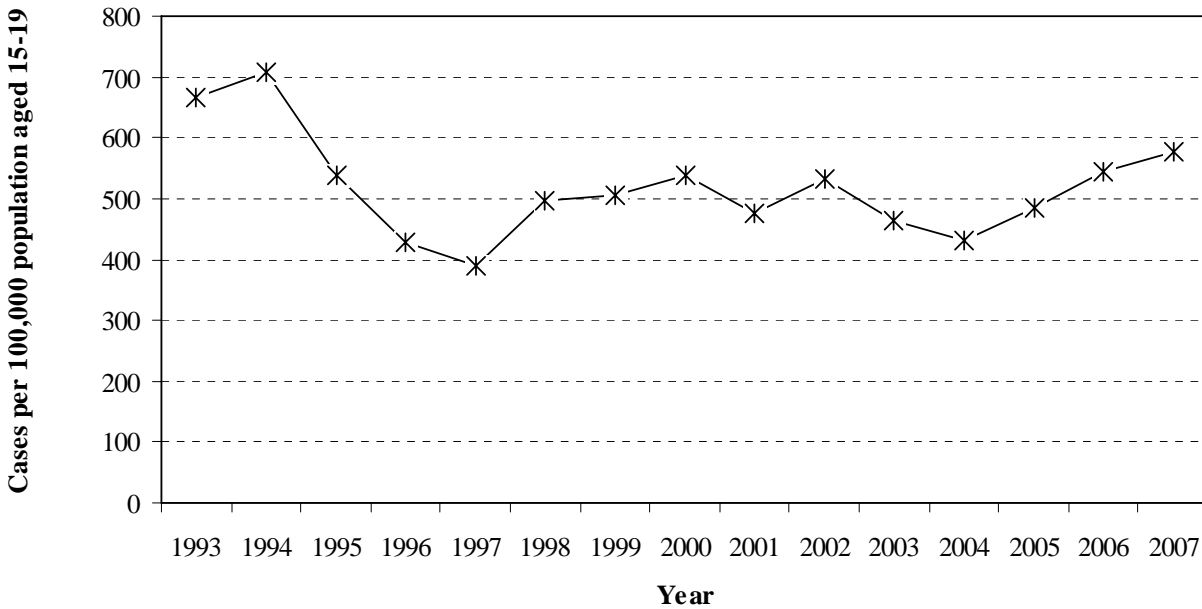


Source: STD case surveillance, Bureau of Communicable Diseases, Division of Public Health, Department of Health Services.

Note: See Table 6, page 23, for the data in this figure.

- Of four sexually transmitted diseases (chlamydia, gonorrhea, syphilis and genital herpes), chlamydia is the predominant infection among youth.
- The rate of chlamydia infections among teens increased 26 percent from 1993 to 2007, from 1,364 cases per 100,000 population aged 15-19 to 1,717 cases per 100,000.

Figure 7. Rate of Gonorrhea Reported Among Wisconsin Teens Aged 15-19, 1993-2007

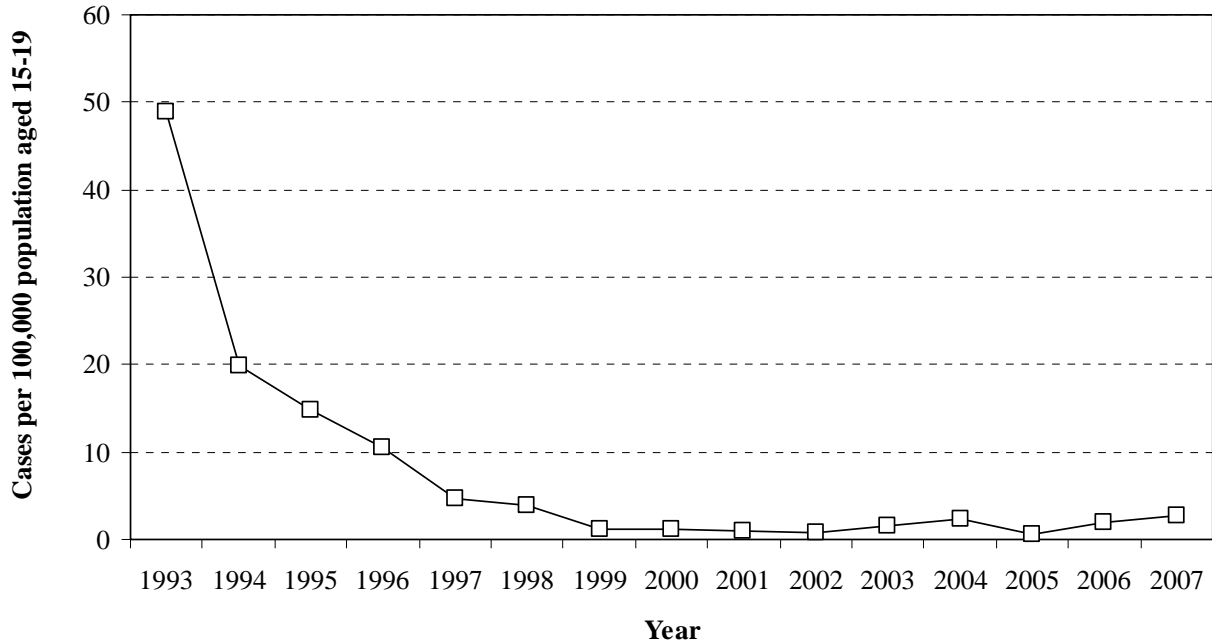


Source: STD case surveillance, Bureau of Communicable Diseases, Division of Public Health, Department of Health Services.

Note: See Table 7, page 24, for the data in this figure.

- From 1993 to 2007, the gonorrhea infection rate among teens declined 13 percent, from 666 to 577 cases per 100,000 population aged 15-19.
- In recent years, however, the gonorrhea infection rate among teens has increased: from 430 per 100,000 in 2004 to 577 per 100,000 in 2007.

Figure 8. Rate of Syphilis Reported Among Wisconsin Teens Aged 15-19, 1993-2007

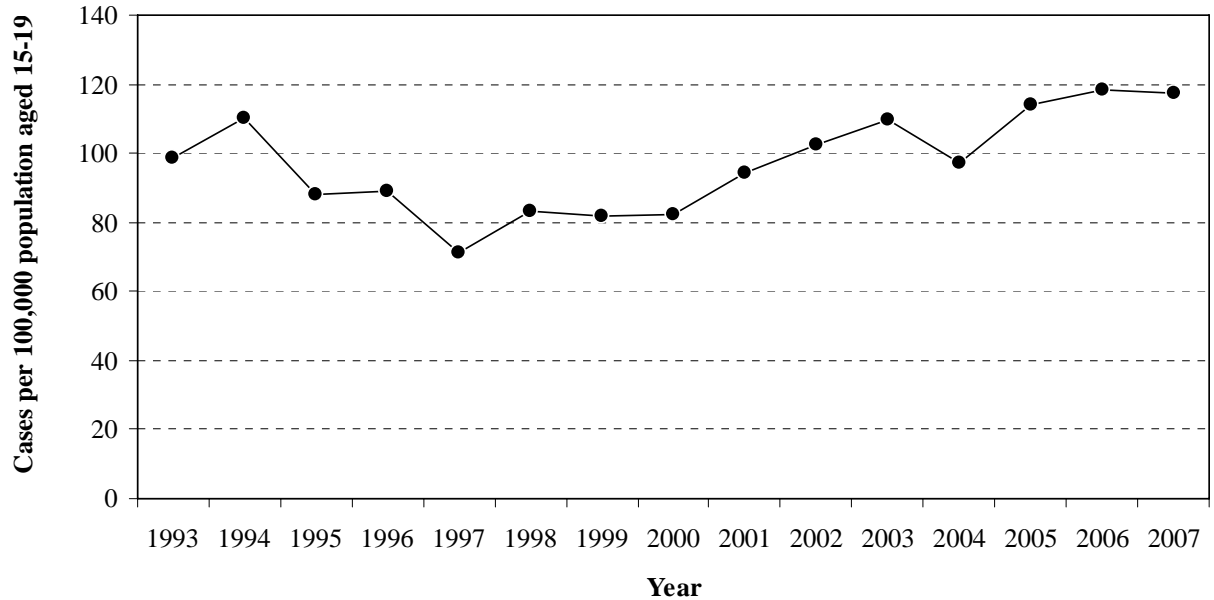


Source: STD case surveillance, Bureau of Communicable Diseases, Division of Public Health, Department of Health Services.

Note: See Table 8, page 24, for the data in this figure.

- From 1993 to 1994, the syphilis infection rate among youth declined sharply, from 49 cases per 100,000 population aged 15-19 to 20 cases per 100,000. The syphilis infection rate continued to decline steadily after 1994.
- Over the 1993-2007 period, the syphilis infection rate among youth declined 94 percent, from 49 cases per 100,000 population aged 15-19 in 1993 to 3 cases per 100,000 in 2007.

Figure 9. Rate of Genital Herpes Reported Among Wisconsin Teens Aged 15-19, 1993-2007

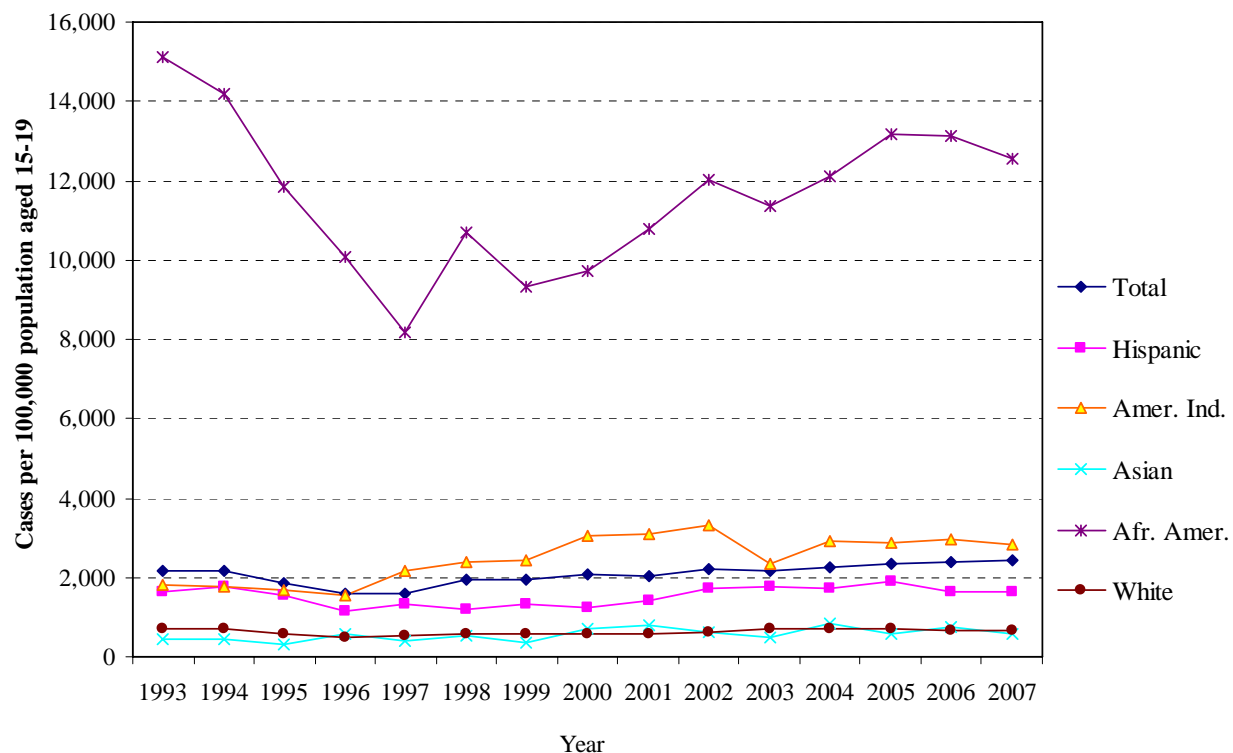


Source: STD case surveillance, Bureau of Communicable Diseases, Division of Public Health, Department of Health Services.

Note: See Table 9, page 25, for the data in this figure.

- The genital herpes infection rate among youth dropped between 1993 and 1997, from 98 to 71 cases per 100,000 population aged 15-19. A reversal of this trend began in 1998, culminating in a high of 118 cases per 100,000 in 2006 and 2007.

Figure 10. Overall Rate of Selected STDs (Chlamydia, Gonorrhea, Syphilis, Genital Herpes) Reported Among Wisconsin Teens Aged 15-19, by Race/Ethnicity, 1993-2007

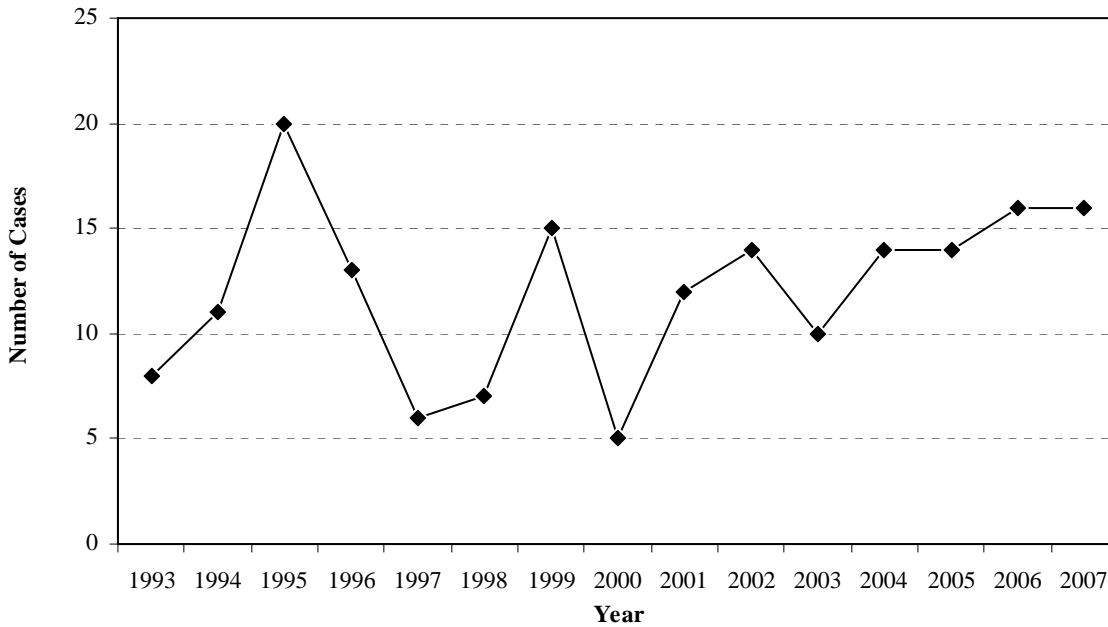


Source: STD case surveillance, Bureau of Communicable Diseases, Division of Public Health, Department of Health Services.

Note: See Table 10, page 26, for the data in this figure.

- The overall rate of four sexually transmitted diseases (chlamydia, gonorrhea, syphilis, and genital herpes combined) among African American youth declined from 15,127 cases per 100,000 population aged 15-19 in 1993 to 12,533 per 100,000 in 2007, a reduction of 17 percent.
- Most of the decline in the African American rate occurred between 1993 and 1997, when the rate among African American youth decreased by 46 percent to a low of 8,157 cases per 100,000. Between 1997 and 2007, the rate among African American youth increased by 54 percent.
- In 1993 the rate of these four STDs among African American youth in Wisconsin was 7 times higher than the rate for all Wisconsin youth. The magnitude of the African American disparity declined to 5.2 times the rate for all youth in 2007.
- The percent of cases with unknown race/ethnicity was substantial each year, ranging from 19 percent in 1993 to 36 percent in 2000. As a result, disparities by race/ethnicity are difficult to interpret.

Figure 11. Number of AIDS-HIV Cases Reported Among Wisconsin Teens Aged 15-19, 1993-2007

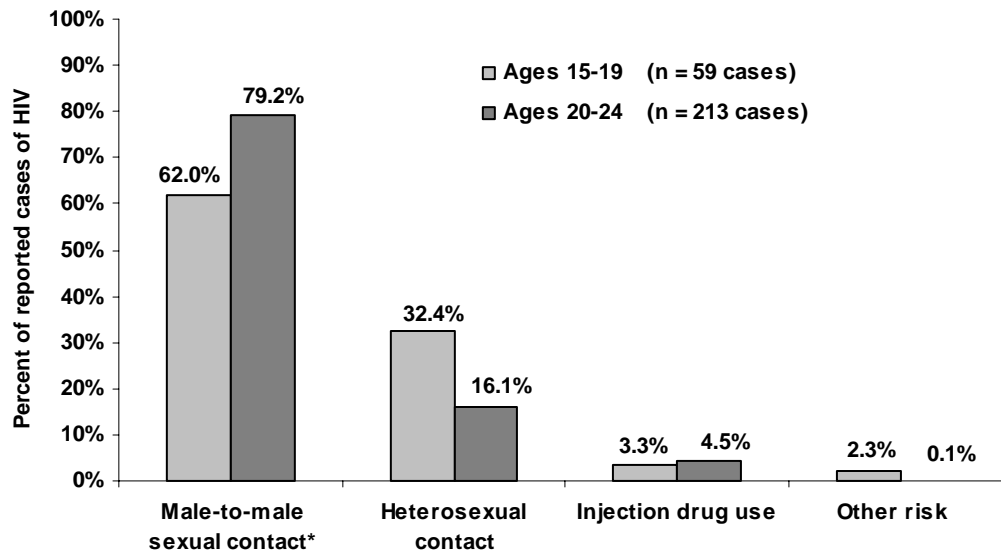


Source: Wisconsin AIDS/HIV Program surveillance data, Bureau of Communicable Diseases, Division of Public Health, Department of Health Services.

Note: See Table 11, page 27, for the data in this figure.

- The annual number of AIDS/HIV cases diagnosed among Wisconsin youth aged 15-19 is too small to calculate a meaningful rate. People infected with HIV usually are without symptoms for many years. As a result, there are likely many more people that are infected as teenagers who are not diagnosed until later in life. Thus, these numbers are probably a significant underestimation of HIV incidence in this age group.

Figure 12. Estimated Percentage of Reported HIV Cases among People Aged 15-24, By Risk Exposure, Wisconsin, 2004-2007



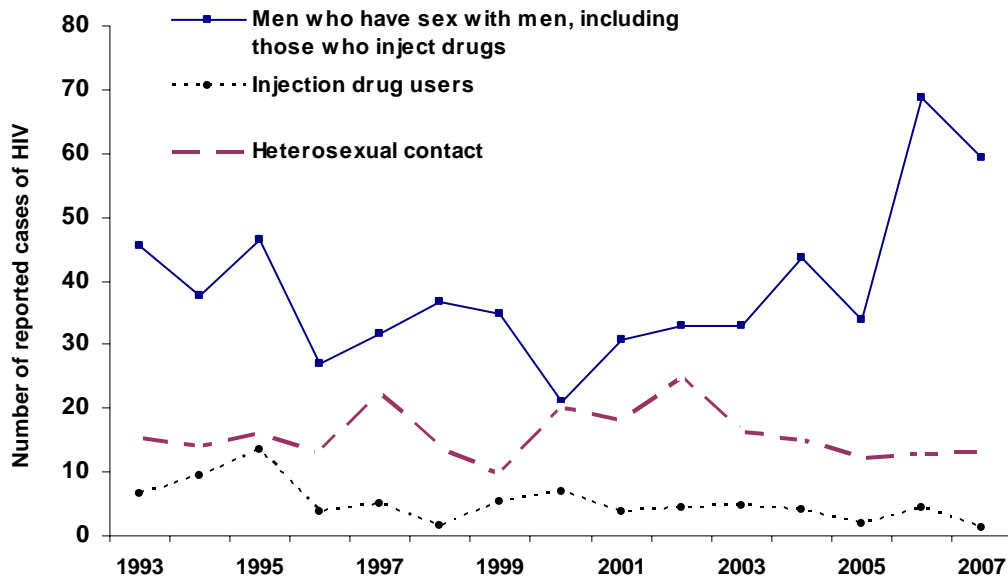
* Includes men who have sex with men and also report injection drug use.

Source: Wisconsin AIDS/HIV Program surveillance data, Bureau of Communicable Diseases, Division of Public Health, Department of Health Services.

Note: See Table 12, page 27, for the data in this figure.

- Of the 59 cases of HIV reported among youth aged 15-19 in Wisconsin from 2004 to 2007, male-to-male sexual contact accounted for 62 percent of cases (lighter bar, Figure 12).
- Because people are often infected for several years before their HIV infection is identified, review of reported cases of HIV among persons ages 20-24 provides additional information about risk behaviors in adolescence. Male-to-male sexual behavior accounts for 79 percent of reported infections among people in this age group (darker bar, Figure 12).

Figure 13. Adjusted Number of Cases* of Reported HIV among People Aged 15-24, By Risk Exposure, Wisconsin, 1993-2007



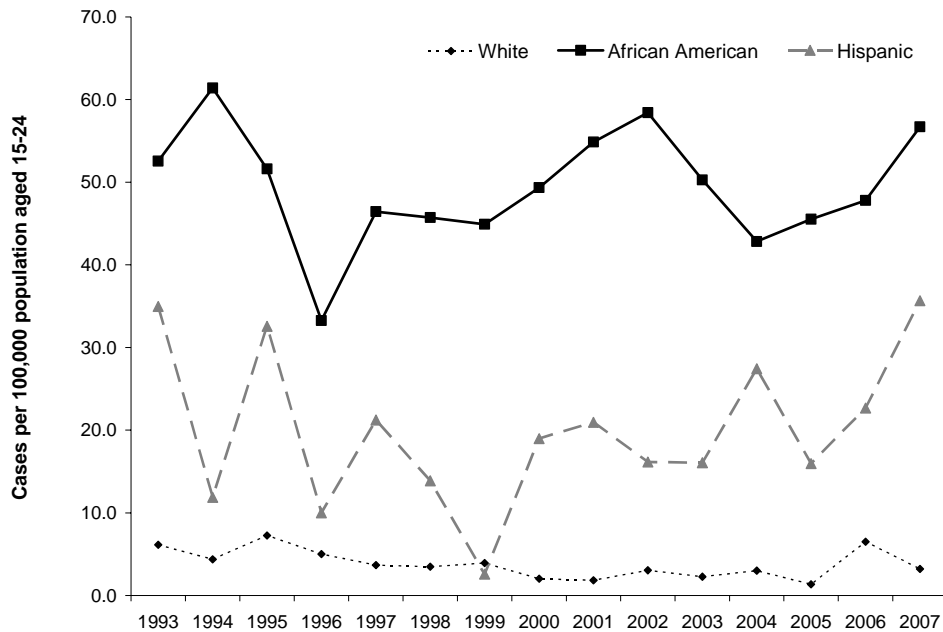
* The number of cases has been adjusted to account for cases reporting no risk factor. The adjustment procedure imputes the risk factor for cases without known risk based on race/ethnicity, gender, and geographic region.

Source: Wisconsin AIDS/HIV Program surveillance data, Bureau of Communicable Diseases, Division of Public Health, Department of Health Services.

Note: See Table 13, page 28, for the data in this figure.

- Trend data for reported HIV among people aged 15-24 show increases since 2000 in cases among men who have sex with men. In contrast, the number of cases of HIV among people reporting heterosexual contact or injection drug use has declined in recent years.

Figure 14. Rates per 100,000 Population of Reported HIV Cases among People Aged 15-24, By Race/Ethnicity, Wisconsin, 1993-2007

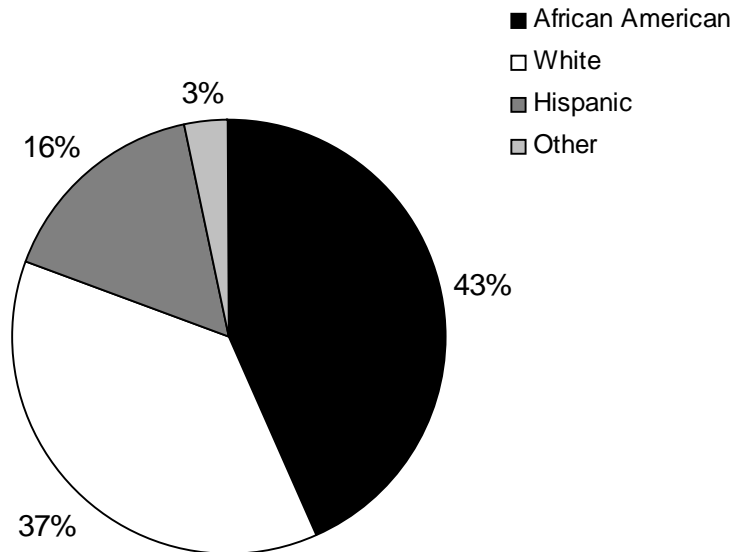


Source: Wisconsin AIDS/HIV Program surveillance data, Bureau of Communicable Diseases, Division of Public Health, Department of Health Services.

Note: See Table 14, page 29, for the data in this figure.

- Wisconsin rates of reported HIV per 100,000 population among young people ages 15-24 by race/ethnicity show significant racial disparities. Rates are more than 13-fold and five-fold higher for African Americans and Hispanics, respectively, compared to non-Hispanic whites.
- HIV rates have increased sharply in the past several years in African Americans and Hispanics while they have moderated among whites.
- Case numbers for American Indians and Asians are presented in the Data Tables section of this report (page 29); rates per 100,000 population for these groups are not shown because the annual number of cases is small.

Figure 15. Percent by Race/Ethnicity of HIV Cases* among Young Men (Ages 15-24) Who Have Sex with Men, Wisconsin, 2004-2007**



* The number of cases has been adjusted to account for cases reporting no risk factor. The adjustment procedure imputes the risk factor for cases without known risk based on race/ethnicity, gender, and geographic region.

** Includes men who have sex with men and also inject drugs.

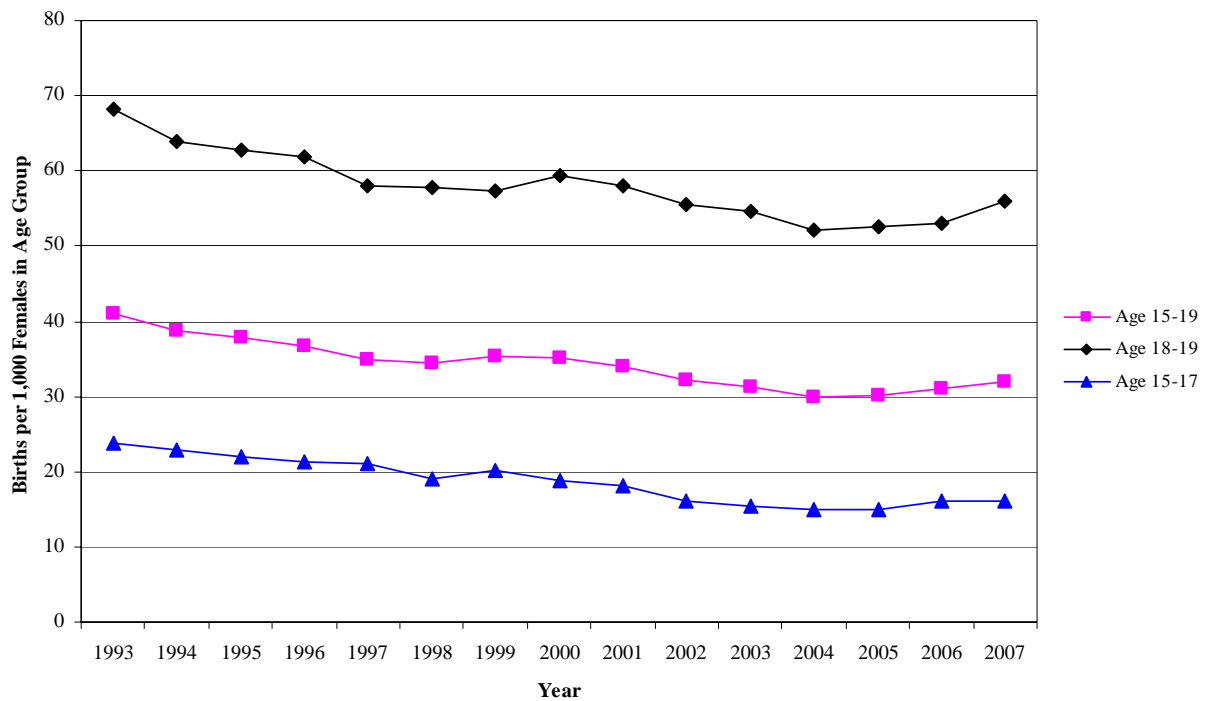
Source: Wisconsin AIDS/HIV Program surveillance data, Bureau of Communicable Diseases, Division of Public Health, Department of Health Services.

Note: See Table 15, page 30, for the data in this figure. Percentages do not add up to 100% due to rounding.

- Of the approximately 200 adjusted cases of HIV reported in Wisconsin between 2004 and 2007 among young men (ages 15-24) who have sex with men, 43 percent of cases occurred among African Americans, followed by 37 percent among whites, 16 percent among Hispanics/Latinos, and 3 percent among other racial groups.
- African Americans and Hispanics make up approximately 8 percent and 6 percent, respectively, of Wisconsin's male population aged 15-24. Compared to their proportions in the population, African American males (43% of cases) and Hispanic males (16% of cases) in this age group are disproportionately affected by HIV through male-to-male sex.

Births to Teens

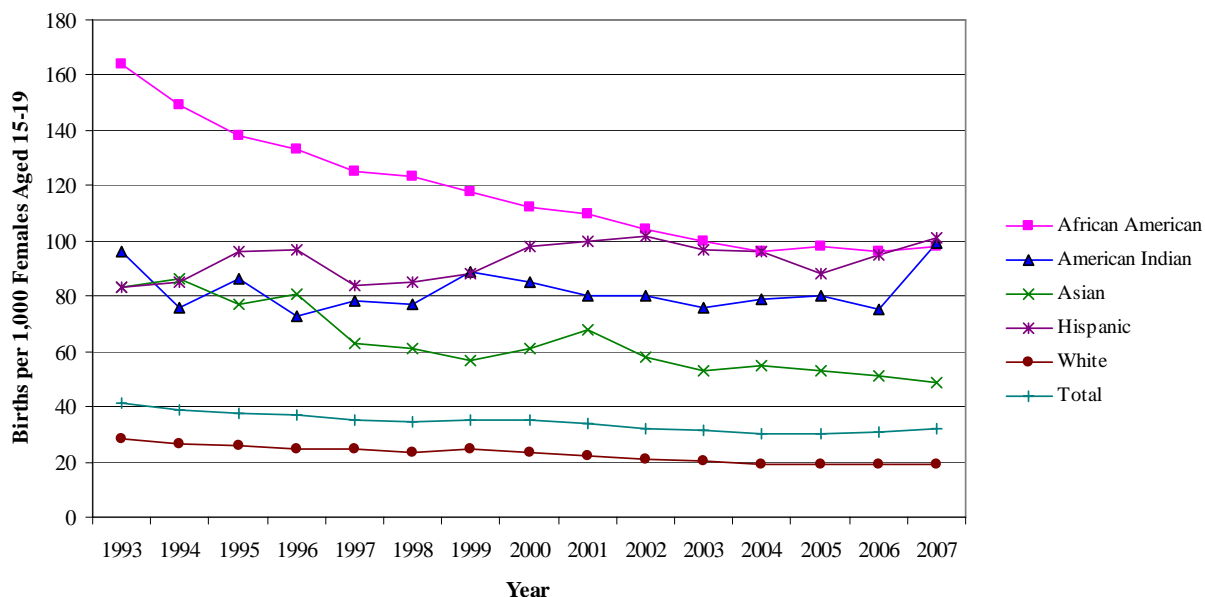
Figure 16. Birth Rates by Age, Wisconsin Teens, 1993-2007



Source: Bureau of Health Information and Policy, Division of Public Health, Department of Health Services.

Note: See Table 16, page 31, for the data in this figure.

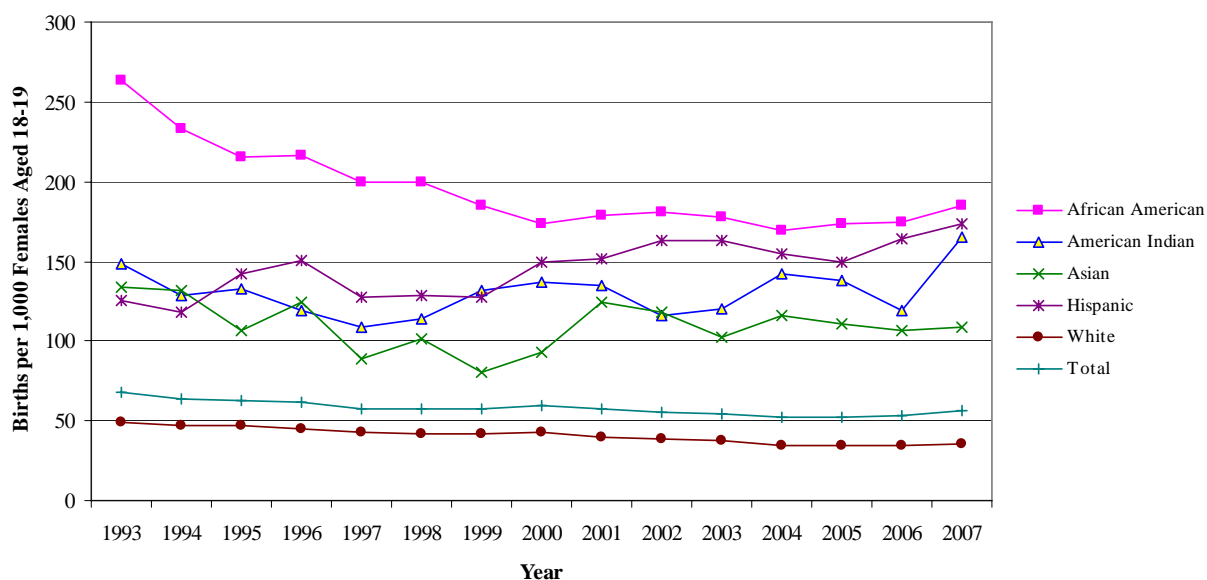
- Wisconsin's overall teen birth rate (births per 1,000 females aged 15-19) declined steadily from 1993 to 2004, as did birth rates among both older teens (aged 18-19) and younger teens (aged 15-17). This decline in teen birth rates ended in 2004. The teen birth rate increased in 2006 and 2007.
- The number of births to Wisconsin teens aged 15-19 decreased from 7,057 in 1993 to 6,240 in 2007. From 1993 to 2007, the teen birth rate decreased 22 percent, from 41 births per 1,000 females aged 15-19 to 32 per 1,000.
- The number of births to teens aged 18-19 decreased from 4,576 in 1993 to 4,366 in 2007. From 1993 to 2007, the birth rate among older teens decreased 18 percent, from 68 births per 1,000 females aged 18-19 to 56 per 1,000.
- The number of births to teens aged 15-17 decreased from 2,481 in 1993 to 1,874 in 2007. From 1993 to 2007, the birth rate among teens aged 15-17 decreased 33 percent, from 24 births per 1,000 females aged 15-17 to 16 per 1,000.

Figure 17. Birth Rates, Wisconsin Teens Aged 15-19, by Race/Ethnicity, 1993-2007

Source: Bureau of Health Information and Policy, Division of Public Health, Department of Health Services.

Note: See Table 17, page 32, for the data in this figure.

- From 1993 to 2007, the birth rate for 15-19-year-olds decreased for all racial/ethnic groups in Wisconsin except American Indians and Hispanics/Latinos.
- The birth rate for African Americans aged 15-19 decreased 40 percent, from 164 per 1,000 in 1993 to 98 per 1,000 in 2007.
- The birth rate for Asians aged 15-19 decreased 41 percent, from 83 per 1,000 in 1993 to 49 per 1,000 in 2007.
- The birth rate for whites aged 15-19 decreased 32 percent, from 28 per 1,000 in 1993 to 19 per 1,000 in 2007.
- The birth rate for American Indians aged 15-19 fluctuated during this period, resulting in an overall increase of 3 percent, from 96 per 1,000 in 1993 to 99 per 1,000 in 2007.
- The birth rate for Hispanics/Latinos aged 15-19 increased 22 percent, from 83 per 1,000 in 1993 to 101 per 1,000 in 2007.

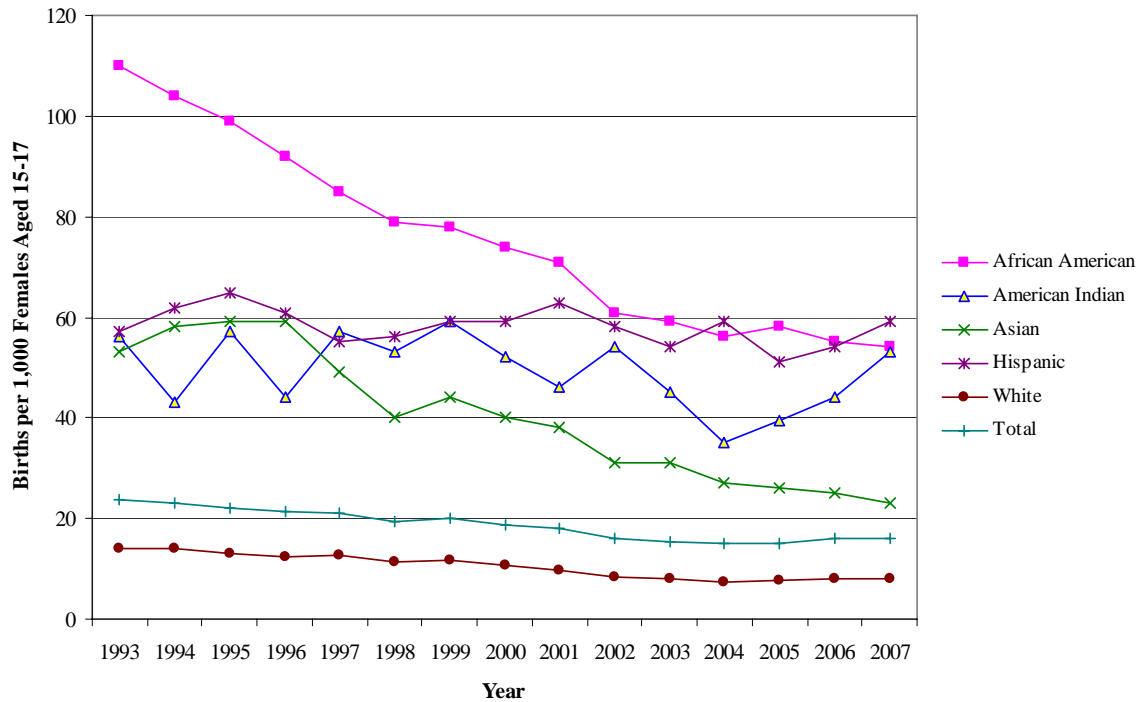
Figure 18. Birth Rates, Wisconsin Teens Aged 18-19, by Race/Ethnicity, 1993-2007

Source: Wisconsin Bureau of Health Information and Policy, Division of Public Health, Department of Health Services.

Note: See Table 18, page 33, for the data in this figure.

- Despite some fluctuations, the birth rate for 18-19-year-olds decreased from 1993 to 2007 for all racial/ethnic groups in Wisconsin except American Indians and Hispanics/Latinos.
- The birth rate for African Americans aged 18-19 decreased 30 percent, from 263 per 1,000 in 1993 to 185 per 1,000 in 2007.
- The birth rate for whites aged 18-19 decreased 27 percent, from 49 per 1,000 in 1993 to 36 per 1,000 in 2007.
- The birth rate for Asians aged 18-19 decreased 19 percent, from 134 per 1,000 in 1993 to 109 per 1,000 in 2007.
- The birth rate for American Indians aged 18-19 increased 11 percent, from 148 per 1,000 in 1993 to 165 per 1,000 in 2007.
- The birth rate for Hispanics/Latinos aged 18-19 increased 38 percent, from 125 per 1,000 in 1993 to 173 per 1,000 in 2007.

Figure 19. Birth Rates, Wisconsin Teens Aged 15-17, by Race/Ethnicity, 1993-2007



Source: Bureau of Health Information and Policy, Division of Public Health, Department of Health Services.

Note: See Table 19, page 34, for the data in this figure.

- From 1993 to 2007, the birth rate for 15-17-year-olds decreased for all racial/ethnic groups in Wisconsin except Hispanics/Latinos.
- The birth rate for Asians aged 15-17 decreased 57 percent, from 53 per 1,000 in 1993 to 23 per 1,000 in 2007.
- The birth rate for African Americans aged 15-17 decreased 51 percent, from 110 per 1,000 in 1993 to 54 per 1,000 in 2007.
- The birth rate for whites aged 15-17 decreased 43 percent, from 14 per 1,000 in 1993 to 8 per 1,000 in 2007.
- The birth rate for American Indians aged 15-17 decreased 5 percent, from 56 per 1,000 in 1993 to 53 per 1,000 in 2007.
- The birth rate for Hispanics aged 15-17 increased 4 percent, from 57 per 1,000 in 1993 to 59 per 1,000 in 2007.

Sexual Behavior

Table 1. Sexual Intercourse among Wisconsin High School Students

Question: "Have you ever had sexual intercourse?"							
	1993	1997	1999	2001	2003	2005	2007
Yes	47.0%	41.3%	41.5%	39.3%	36.8%	40.3%	44.6%
No	53.0%	58.7%	58.5%	60.7%	63.2%	59.7%	55.4%
+/-	(1.8%)	(2.9%)	(2.9%)	(2.4%)	(2.3%)	(2.1%)	(2.3%)
Total (N)	3,320	1,326	1,336	2,120	2,121	2,389	1,931

Source: Wisconsin Youth Risk Behavior Survey, Department of Public Instruction.

N Number in sample. See Technical Notes on sexual behavior.

+/- 95% confidence interval. See Technical Notes on sexual behavior.

Question: "During the past 3 months, with how many people have you had sexual intercourse?"							
	1993	1997	1999	2001	2003	2005	2007
Never had intercourse	53.1%	58.6%	58.6%	60.7%	63.2%	59.7%	55.2%
Had intercourse, but not in past 3 months	14.5%	12.7%	10.9%	10.2%	10.2%	10.8%	11.9%
One or more partners in past 3 months	32.5%	28.7%	30.5%	29.1%	26.6%	29.5%	32.9%
+/-	(1.8%)	(2.7%)	(2.7%)	(2.2%)	(2.1%)	(2.0%)	(2.0%)
Total (N)	3,320	1,326	1,336	2,120	2,121	2,389	1,933

Source: Wisconsin Youth Risk Behavior Survey, Department of Public Instruction.

N Number in sample. See Technical Notes on sexual behavior.

+/- 95% confidence interval. See Technical Notes on sexual behavior.

Note: Percentages in this table appear in Figure 1, page 1.

Table 2. AIDS/HIV Information among Wisconsin High School Students

Question: “Have you ever been taught about AIDS/HIV in school?”

	1993	1997	1999	2001
Yes	84.1%	90.6%	91.2%	92.1%
+/-	(1.3%)	(1.6%)	(1.6%)	(1.3%)
Total (N)	3,320	1,326	1,336	2,120

Source: Wisconsin Youth Risk Behavior Survey, Department of Public Instruction.

N Number in sample. See Technical Notes on sexual behavior.
 +/- 95% confidence interval. See Technical Notes on sexual behavior.

Question: “Have you ever been taught about ways to prevent pregnancy, AIDS/HIV, or other sexually transmitted diseases in school?”

	2003	2005
Yes	93.8%	92.7%
+/-	(1.1%)	(1.1%)
Total (N)	2,121	2,389

Source: Wisconsin Youth Risk Behavior Survey, Department of Public Instruction.

N Number in sample. See Technical Notes on sexual behavior.
 +/- 95% confidence interval. See Technical Notes on sexual behavior.

Question: “Have you ever talked about AIDS or HIV infection with your parents or other adults in your family?”

	1993	1997	1999	2001	2003	2005	2007
Yes	58.4%	53.8%	54.2%	49.1%	48.7%	47.8%	39.8%
+/-	(1.8%)	(2.8%)	(2.8%)	(2.3%)	(2.3%)	(2.1%)	60.2%
Total (N)	3,320	1,326	1,336	2,120	2,121	2,389	2,094

Source: Wisconsin Youth Risk Behavior Survey, Department of Public Instruction.

N Number in sample. See Technical Notes on sexual behavior.
 +/- 95% confidence interval. See Technical Notes on sexual behavior.

Note: Percentages in this table appear in Figure 2, page 2.

Table 3. Condom Use among Wisconsin High School Students Who Have Had Intercourse in Past Three Months

**Question to those who have had sex within the last three months:
“Did you or your partner use a condom the last time you had sexual intercourse?”**

	1993	1997	1999	2001	2003	2005	2007
Yes	58.3%	57.7%	57.7%	59.2%	65.2%	65.3%	61.4%
No	41.7%	42.3%	42.3%	40.8%	34.8%	34.7%	38.5%
+/-	(3.3%)	(5.6%)	(5.4%)	(4.4%)	(4.4%)	(3.7%)	(3.9%)
Total (N)	949	333	352	601	512	677	623

Source: Wisconsin Youth Risk Behavior Survey, Department of Public Instruction.

N Number in sample. See Technical Notes on sexual behavior.

+/- 95% confidence interval. See Technical Notes on sexual behavior.

Note: Percentages in this table appear in Figure 3, page 3.

Table 4. Same-Sex Sexual Contact among Wisconsin High School Students Who Have Ever Had Sexual Contact, 2007

Question: “During your life, with whom have you had sexual contact?” <i>(Possible responses: I never had sexual contact; Females; Males; Females and males.)</i>		
	Any same-sex contact	Opposite -sex contact only
Weighted percent	8%	92%
+/-	(2%)	(1%)
(N = 1,292)	111	1,181

Source: Wisconsin Youth Risk Behavior Survey, Department of Public Instruction.

N Number in sample. See Technical Notes of sexual behavior.

+/- 95% confidence interval. See Technical Notes on sexual behavior.

Note: Percentages in this table appear in Figure 4, page 4.

Sexually Transmitted Diseases

Table 5. Overall Rate of Selected STDs (Chlamydia, Gonorrhea, Syphilis, Genital Herpes) Reported Among Wisconsin Teens Aged 15-19, 1993-2007

Year	Total		Male	Female
	Number	Rate	Number	Number
1993	7,659	2,177.5	1,838	5,819
1994	7,872	2,176.5	1,887	5,983
1995	6,947	1,854.0	1,484	5,460
1996	6,271	1,612.2	1,266	5,004
1997	6,331	1,579.0	1,143	5,188
1998	8,031	1,951.3	1,519	6,511
1999	8,046	1,933.3	1,557	6,485
2000	8,416	2,065.7	1,672	6,737
2001	8,311	2,032.7	1,691	6,606
2002	9,047	2,207.6	2,010	7,025
2003	8,848	2,161.1	1,988	6,827
2004	9,195	2,247.7	2,077	7,108
2005	9,552	2,335.0	2,185	7,362
2006	9,628	2,378.6	2,121	7,490
2007	9,709	2,417.1	2,049	7,642

Source: STD case surveillance, Bureau of Communicable Diseases, Division of Public Health, Department of Health Services.

Note: Rates are the number of reported cases per 100,000 population aged 15-19. The total number may exceed the sum of male and female numbers due to missing information about sex on the case report. Rates in this table appear in Figure 5, page 5.

Table 6. Rate of Chlamydia Reported Among Wisconsin Teens Aged 15-19, 1993-2007

Year	Total		Male	Female
	Number	Rate	Number	Number
1993	4,799	1,364.4	794	4,004
1994	4,845	1,339.5	853	3,990
1995	4,549	1,214.0	731	3,817
1996	4,222	1,085.4	650	3,572
1997	4,460	1,112.4	662	3,798
1998	5,626	1,367.0	905	4,720
1999	5,600	1,345.6	922	4,674
2000	5,878	1,442.8	999	4,873
2001	5,979	1,462.3	1,104	4,866
2002	6,437	1,570.7	1,316	5,113
2003	6,496	1,586.6	1,350	5,123
2004	7,028	1,718.0	1,484	5,539
2005	7,096	1,734.6	1,515	5,577
2006	6,943	1,715.3	1,392	5,539
2007	6,905	1,716.9	1,294	5,599

Source: STD case surveillance, Bureau of Communicable Diseases, Division of Public Health, Department of Health Services.

Note: Rates are the number of reported cases per 100,000 population aged 15-19. The total number may exceed the sum of male and female numbers due to missing information about sex on the case report. Rates in this table appear in Figure 6, page 6.

Table 7. Rate of Gonorrhea Reported Among Wisconsin Teens Aged 15-19, 1993-2007

Year	Total		Male	Female
	Number	Rate	Number	Number
1993	2,342	665.8	946	1,395
1994	2,556	706.7	963	1,593
1995	2,012	536.9	689	1,321
1996	1,662	427.3	562	1,099
1997	1,566	390.6	444	1,122
1998	2,047	497.4	571	1,476
1999	2,100	504.6	610	1,490
2000	2,198	539.5	642	1,555
2001	1,942	475.0	547	1,390
2002	2,187	533.7	662	1,523
2003	1,897	463.3	593	1,296
2004	1,759	430.0	544	1,210
2005	1,987	485.7	631	1,355
2006	2,198	543.0	685	1,509
2007	2,320	576.9	703	1,612

Source: STD case surveillance, Bureau of Communicable Diseases, Division of Public Health, Department of Health Services.

Note: Rates are the number of reported cases per 100,000 population aged 15-19. The total number may exceed the sum of male and female numbers due to missing information about sex on the case report. Rates in this table appear in Figure 7, page 7.

Table 8. Rate of Syphilis Reported Among Wisconsin Teens Aged 15-19, 1993-2007

Year	Total		Male	Female
	Number	Rate	Number	Number
1993	172	48.9	50	122
1994	72	19.9	15	57
1995	56	14.9	19	37
1996	41	10.5	10	31
1997	19	4.7	6	13
1998	16	3.9	5	11
1999	5	1.2	1	4
2000	5	1.2	2	3
2001	4	1.0	2	2
2002	3	0.7	0	3
2003	6	1.5	3	3
2004	10	2.4	7	3
2005	2	0.5	1	1
2006	8	2.0	4	4
2007	11	2.7	6	5

Source: STD case surveillance, Bureau of Communicable Diseases, Division of Public Health, Department of Health Services.

Note: Rates are the number of reported cases per 100,000 population aged 15-19. The total number may exceed the sum of male and female numbers due to missing information about sex on the case report. Rates in this table appear in Figure 8, page 8.

Table 9. Rate of Genital Herpes Reported Among Wisconsin Teens Aged 15-19, 1993-2007

Year	Total		Male	Female
	Number	Rate	Number	Number
1993	346	98.4	48	298
1994	399	110.3	56	343
1995	330	88.1	45	285
1996	346	89.0	44	302
1997	286	71.3	31	255
1998	342	83.1	38	304
1999	341	81.9	24	317
2000	335	82.2	29	306
2001	386	94.4	38	348
2002	420	102.5	32	386
2003	449	109.7	42	405
2004	398	97.3	42	356
2005	467	114.2	38	429
2006	479	118.3	40	438
2007	473	117.6	46	426

Source: STD case surveillance, Bureau of Communicable Diseases, Division of Public Health, Department of Health Services.

Note: Rates are the number of reported cases per 100,000 population aged 15-19. The total number may exceed the sum of male and female numbers due to missing information about sex on the case report. Rates in this table appear in Figure 9, page 9.

Table 10. Overall Rate of Selected STDs (Chlamydia, Gonorrhea, Syphilis, Genital Herpes) Reported Among Wisconsin Teens Aged 15-19, by Race/Ethnicity, 1993-2007

Rates per 100,000						
Year	Total	Hisp.	Am. Ind.	Asian	Afr. Amer.	White
1993	2,177.5	1,656.5	1,824.2	427.9	15,127.4	710.5
1994	2,176.3	1,767.0	1,777.8	451.1	14,172.7	704.0
1995	1,853.9	1,538.0	1,690.7	314.8	11,850.7	581.4
1996	1,612.2	1,127.7	1,549.7	554.2	10,060.9	486.5
1997	1,578.9	1,347.6	2,145.6	419.5	8,157.5	510.9
1998	1,951.3	1,174.8	2,376.8	525.7	10,705.4	579.4
1999	1,933.3	1,346.6	2,439.5	346.3	9,333.9	567.8
2000	2,066.8	1,236.1	3,034.2	703.4	9,714.2	584.4
2001	2,032.8	1,418.4	3,077.6	792.4	10,769.0	595.2
2002	2,209.7	1,745.0	3,329.8	612.6	12,039.7	632.7
2003	2,161.3	1,779.5	2,334.2	502.7	11,340.4	688.3
2004	2,247.7	1,743.7	2,896.5	844.7	12,119.6	711.3
2005	2,335.0	1,904.2	2,854.3	578.1	13,151.2	694.0
2006	2,378.6	1,632.9	2,950.6	769.7	13,146.2	684.4
2007	2,417.1	1,633.5	2,826.4	573.1	12,533.0	661.3

Number of STD Cases								
Year	Total	Hisp.	Am. Ind.	Asian	Afr. Amer.	White	Other	Unk.
1993	7,659	188	66	25	3,710	2,177	27	1,466
1994	7,872	224	68	28	3,656	2,205	31	1,660
1995	6,947	210	68	21	3,121	1,884	24	1,619
1996	6,271	169	66	41	2,790	1,628	24	1,553
1997	6,331	222	94	35	2,355	1,752	16	1,857
1998	8,031	209	110	50	3,187	2,027	24	2,424
1999	8,046	257	118	36	2,829	1,996	54	2,756
2000	8,416	242	140	75	2,893	2,002	25	3,039
2001	8,311	273	144	85	3,316	2,044	38	2,411
2002	9,047	333	158	67	3,793	2,171	42	2,483
2003	8,848	340	113	56	3,665	2,354	42	2,278
2004	9,195	341	141	95	3,986	2,422	25	2,185
2005	9,552	383	142	66	4,428	2,352	32	2,134
2006	9,628	345	147	83	4,450	2,286	52	2,265
2007	9,721	360	140	63	4,253	2,184	71	2,650

Percent by Race/Ethnicity								
Year	Total	Hisp.	Am. Ind.	Asian	Afr. Amer.	White	Other	Unk.
1993	100%	2.5	0.9	0.3	48.4	28.4	0.4	19.1
1994	100%	2.8	0.9	0.4	46.4	28.0	0.4	21.1
1995	100%	3.0	1.0	0.3	44.9	27.1	0.3	23.3
1996	100%	2.7	1.1	0.7	44.5	26.0	0.4	24.8
1997	100%	3.5	1.5	0.6	37.2	27.7	0.3	29.3
1998	100%	2.6	1.4	0.6	39.7	25.2	0.3	30.2
1999	100%	3.2	1.5	0.4	35.2	24.8	0.7	34.3
2000	100%	2.9	1.7	0.9	34.4	23.8	0.3	36.1
2001	100%	3.3	1.7	1.0	39.9	24.6	0.5	29.0
2002	100%	3.7	1.7	0.7	41.9	24.0	0.5	27.4
2003	100%	3.8	1.3	0.6	41.4	26.6	0.5	25.7
2004	100%	3.7	1.5	1.0	43.3	26.3	0.3	23.8
2005	100%	4.0	1.5	0.7	46.4	24.6	0.3	22.3
2006	100%	3.6	1.5	0.9	46.2	23.7	0.5	23.5
2007	100%	3.7	1.4	0.6	43.8	22.5	0.7	27.3

Source: STD case surveillance, Bureau of Communicable Diseases, Division of Public Health, Department of Health Services. Note: Rates are the number of reported cases per 100,000 population aged 15-19. Rates in this table appear in Figure 10, page 10.

Table 11. Number of AIDS/HIV Cases Reported Among Youth Aged 15-19, Wisconsin, 1993-2007

Year	Number of Cases	Year	Number of Cases
1993	8	2001	12
1994	11	2002	14
1995	20	2003	10
1996	13	2004	14
1997	6	2005	14
1998	7	2006	16
1999	15	2007	16
2000	5		

Source: Wisconsin AIDS/HIV Program surveillance data, Bureau of Communicable Diseases, Division of Public Health, Department of Health Services.

Note: Numbers in this table appear in Figure 11, page 11.

Table 12. Estimated Percentage of Reported HIV Cases among People Aged 15-24, By Risk Exposure, Wisconsin, 2004-2007

	Men who have sex with men (includes MSM who also inject drugs)	Injection drug users	Heterosexual contact	Other risk	Total
Adjusted number of cases* among persons ages 15-19	36.6	2.0	19.1	1.3	59.0
<i>Percent</i>	62.0%	3.3%	32.4%	2.3%	100.0%
Adjusted number of cases* among persons ages 20-24	168.7	9.6	34.3	0.3	213.0
<i>Percent</i>	79.2%	4.5%	16.1%	0.1%	100.0%

Source: Wisconsin AIDS/HIV Program surveillance data, Bureau of Communicable Diseases, Division of Public Health, Department of Health Services.

Note: Percentages in this table appear in Figure 12, page 12.

* The number of cases has been adjusted to account for cases reporting no risk factor. The adjustment procedure imputes the risk factor for cases without known risk based on race/ethnicity, gender, and geographic region.

Table 13. Adjusted Number of Cases* of Reported HIV among People Aged 15-24, By Risk Exposure, Wisconsin, 1993-2007

Year	Men who have sex with men (includes MSM who also inject drugs)	Injection drug users	Heterosexual contact	Other risk	Total
1993	45.5	6.5	15.3	4.7	72
1994	37.5	9.4	14.0	0.1	61
1995	46.5	13.4	16.1	5.0	81
1996	27.0	3.7	13.3	7.0	51
1997	31.7	5.1	22.2	0.0	59
1998	36.7	1.6	13.7	1.0	53
1999	34.8	5.4	9.6	2.2	52
2000	20.9	7.0	20.1	0.0	48
2001	30.7	3.9	18.3	0.2	53
2002	32.9	4.3	24.8	0.0	62
2003	33.0	4.6	16.4	0.0	54
2004	43.7	4.0	15.1	0.2	63
2005	33.7	1.9	12.3	0.1	48
2006	68.6	4.5	12.8	0.1	86
2007	59.3	1.1	13.3	1.2	75

Source: Wisconsin AIDS/HIV Program surveillance data, Bureau of Communicable Diseases, Division of Public Health, Department of Health Services.

Note: Numbers in this table appear in Figure 13, page 13.

* The number of cases has been adjusted to account for cases reporting no risk factor. The adjustment procedure imputes the risk factor for cases without known risk based on race/ethnicity, gender, and geographic region.

Table 14. Reported HIV among People Aged 15-24, by Race/Ethnicity, Wisconsin, 1993-2007**Number of Cases**

Year	African American	Hispanic	White	American Indian	Asian/Pacific Islander
1993	25	8	38	0	0
1994	30	3	27	0	0
1995	26	9	45	1	0
1996	17	3	31	0	0
1997	24	7	23	3	0
1998	24	5	22	1	0
1999	24	1	25	1	1
2000	27	8	13	0	0
2001	31	9	12	0	1
2002	34	7	20	0	0
2003	30	7	15	1	1
2004	26	12	20	2	1
2005	28	7	9	3	0
2006	30	10	43	1	2
2007	36	16	21	0	2

Rate per 100,000 Population

Year	African American	Hispanic	White
1993	52.5	35.0	6.1
1994	61.4	11.9	4.4
1995	51.6	32.6	7.3
1996	33.3	10.0	5.0
1997	46.4	21.2	3.7
1998	45.7	13.9	3.5
1999	44.9	2.6	3.9
2000	49.3	19.0	2.0
2001	54.9	21.0	1.8
2002	58.4	16.1	3.0
2003	50.3	16.1	2.3
2004	42.8	27.4	3.0
2005	45.5	16.0	1.4
2006	47.8	22.7	6.5
2007	56.7	35.7	3.2

Source: Wisconsin AIDS/HIV Program surveillance data, Bureau of Communicable Diseases, Division of Public Health, Department of Health Services.

Notes: Rates in this table appear in Figure 14, page 14. Rates per 100,000 population are not shown for American Indians and Asians due to small case numbers.

Table 15. Adjusted Number* and Percent of Reported HIV Cases among Young Men (Ages 15-24) Who Have Sex with Men, By Race/Ethnicity, Wisconsin, 2004-2007**

	African American	White	Hispanic	Other	Total
Adjusted number of cases, 2004-2007	88.6	76.5	32.6	7.0	204.8
Percent of total cases	43.3%	37.4%	15.9%	3.4%	100.0%

Source: Wisconsin AIDS/HIV Program surveillance data, Bureau of Communicable Diseases, Division of Public Health, Department of Health Services.

Note: Percentages in this table appear in Figure 15, page 15.

* The number of cases has been adjusted to account for cases reporting no risk factor. The adjustment procedure imputes the risk factor for cases without known risk based on race/ethnicity, gender, and geographic region.

** Includes men who have sex with men and also inject drugs.

Births to Teens

Table 16. Births to Wisconsin Teens Aged 15-19 by Age, 1993-2007

Year	Ages 15-19		Ages 18-19		Ages 15-17	
	Number	Rate	Number	Rate	Number	Rate
1993	7,057	41.0	4,576	67.7	2,481	23.8
1994	6,876	38.8	4,379	63.8	2,497	23.0
1995	6,928	37.8	4,379	62.7	2,549	22.5
1996	6,963	36.8	4,454	61.9	2,509	21.4
1997	6,925	35.5	4,384	58.5	2,541	21.1
1998	6,936	34.5	4,570	57.7	2,366	19.4
1999	7,192	35.4	4,760	57.4	2,432	20.2
2000	6,978	35.2	4,753	59.4	2,225	18.8
2001	6,769	33.9	4,602	57.6	2,167	18.1
2002	6,426	32.2	4,528	55.5	1,898	16.0
2003	6,232	31.2	4,371	54.5	1,861	15.5
2004	5,995	30.0	4,230	52.1	1,765	14.9
2005	6,007	30.1	4,231	52.5	1,776	14.9
2006	6,008	30.6	4,168	53.1	1,840	15.6
2007	6,240	32.0	4,366	56.0	1,874	16.0

Source: Wisconsin Bureau of Health Information and Policy, Division of Public Health, Department of Health Services.

Note: Rates are the number of births per 1,000 females in the age group. Rates in this table appear in Figure 16, page 16.

Table 17. Births to Wisconsin Teens Aged 15-19, by Race/Ethnicity, 1993-2007

Birth Rates						
Year	African American	American Indian	Asian	Hispanic / Latino	White	Total
1993	163.9	96.2	82.8	83.4	28.1	41.0
1994	148.6	76.4	86.3	84.9	26.6	38.8
1995	138.1	85.9	76.8	96.0	26.0	37.8
1996	133.3	73.2	81.2	97.4	24.9	36.8
1997	124.8	77.6	63.0	84.4	24.6	35.5
1998	122.7	77.4	61.2	85.4	23.4	34.5
1999	117.9	88.7	57.1	87.8	24.4	35.4
2000	112.3	85.4	61.2	97.8	23.6	35.2
2001	109.7	80.0	67.6	100.3	22.1	33.9
2002	103.7	79.5	58.2	101.7	20.7	32.2
2003	100.4	75.8	52.6	97.0	20.1	31.2
2004	95.5	79.5	54.9	96.3	18.9	30.0
2005	97.8	79.8	52.5	88.5	19.0	30.1
2006	95.8	74.9	50.6	95.3	19.1	30.6
2007	97.9	99.2	49.3	100.8	19.3	32.0

Numbers of Births						
Year	African American	American Indian	Asian	Hispanic / Latino	White	Total
1993	1,976	173	235	459	4,212	7,057
1994	1,876	144	259	508	4,086	6,876
1995	1,771	169	250	608	4,128	6,928
1996	1,787	151	294	667	4,061	6,963
1997	1,747	167	259	633	4,119	6,925
1998	1,772	175	284	697	4,006	6,936
1999	1,733	211	288	755	4,203	7,192
2000	1,634	194	315	866	3,961	6,978
2001	1,622	186	339	890	3,728	6,769
2002	1,546	186	298	912	3,483	6,426
2003	1,515	181	275	878	3,380	6,232
2004	1,458	189	289	892	3,163	5,995
2005	1,515	191	281	854	3,165	6,007
2006	1,494	177	265	953	3,115	6,008
2007	1,573	232	263	1,064	3,103	6,240

Source: Wisconsin Bureau of Health Information and Policy, Division of Public Health, Department of Health Services.

Note: Rates are the number of births per 1,000 females aged 15-19 in each race/ethnicity group. Rates in this table appear in Figure 17, page 17.

Table 18. Births to Wisconsin Teens Aged 18-19, by Race/Ethnicity, 1993-2007

Birth Rates						
Year	African American	American Indian	Asian	Hispanic / Latino	White	Total
1993	262.7	148.3	133.6	124.5	49.4	67.7
1994	233.0	129.0	131.7	117.6	47.0	63.8
1995	215.3	133.0	106.9	141.9	46.8	62.7
1996	215.8	119.1	123.7	150.7	45.0	61.9
1997	200.2	108.9	89.2	128.1	43.3	58.5
1998	199.7	113.6	100.7	129.3	41.6	57.7
1999	185.4	132.0	80.1	127.9	42.4	57.4
2000	174.0	137.0	93.1	149.9	42.8	59.4
2001	178.7	135.0	124.4	152.1	40.3	57.6
2002	180.6	115.8	118.3	162.6	38.0	55.5
2003	178.3	120.1	102.3	163.4	37.5	54.5
2004	169.3	141.9	115.8	154.6	35.0	52.1
2005	173.4	137.6	111.2	148.9	35.3	52.5
2006	174.9	119.1	107.0	163.7	35.0	53.1
2007	184.8	164.8	108.5	173.4	35.5	56.0

Numbers of Births						
Year	African American	American Indian	Asian	Hispanic / Latino	White	Total
1993	1,116	116	139	270	2,934	4,576
1994	1,024	95	153	289	2,816	4,379
1995	935	99	129	360	2,855	4,379
1996	971	95	154	416	2,817	4,454
1997	972	93	126	384	2,809	4,384
1998	1,040	103	165	425	2,835	4,570
1999	1,007	128	150	463	3,010	4,760
2000	966	122	194	564	2,899	4,753
2001	948	120	212	567	2,751	4,602
2002	958	112	191	610	2,656	4,528
2003	927	117	164	579	2,582	4,371
2004	901	141	192	555	2,439	4,230
2005	928	135	186	552	2,429	4,231
2006	921	115	174	617	2,338	4,168
2007	1,003	160	178	674	2,346	4,366

Source: Wisconsin Bureau of Health Information and Policy, Division of Public Health, Department of Health Services.

Note: Rates are the number of births per 1,000 females aged 18-19 in each race/ethnicity group. Rates in this table appear in Figure 18, page 18.

Table 19. Births to Wisconsin Teens Aged 15-17, by Race/Ethnicity, 1993-2007

Birth Rates						
Year	African American	American Indian	Asian	Hispanic / Latino	White	Total
1993	110.1	56.1	53.4	56.7	14.1	23.8
1994	103.5	42.7	57.6	62.1	13.6	23.0
1995	98.6	57.2	59.0	65.3	13.0	22.5
1996	91.7	44.3	58.9	61.5	12.4	21.4
1997	84.7	57.0	49.3	55.4	12.8	21.1
1998	79.3	53.2	39.6	55.8	11.3	19.4
1999	78.4	58.9	43.5	58.7	11.8	20.2
2000	74.2	52.2	39.5	59.3	10.6	18.8
2001	71.1	45.9	38.4	62.8	9.7	18.1
2002	61.2	54.0	30.5	57.9	8.4	16.0
2003	59.4	45.2	30.6	54.3	8.0	15.5
2004	56.0	34.7	26.9	59.4	7.4	14.9
2005	57.9	39.6	25.8	50.8	7.5	14.9
2006	55.5	44.4	25.2	53.9	8.1	15.6
2007	53.5	52.6	23.0	58.5	8.0	16.0

Numbers of Births						
Year	African American	American Indian	Asian	Hispanic / Latino	White	Total
1993	860	57	96	189	1,278	2,481
1994	852	49	106	219	1,270	2,497
1995	836	70	121	248	1,273	2,549
1996	816	56	140	251	1,244	2,509
1997	775	74	133	249	1,310	2,541
1998	732	72	119	272	1,171	2,366
1999	726	83	138	292	1,193	2,432
2000	668	72	121	302	1,062	2,225
2001	674	66	127	323	977	2,167
2002	588	74	107	302	827	1,898
2003	588	64	111	299	798	1,861
2004	557	48	97	337	724	1,765
2005	587	56	95	302	736	1,776
2006	573	62	91	336	777	1,840
2007	570	72	85	390	757	1,874

Source: Wisconsin Bureau of Health Information and Policy, Division of Public Health, Department of Health Services.

Note: Rates are the number of births per 1,000 females aged 15-17 in each race/ethnicity group. Rates in this table appear in Figure 19, page 19.

Technical Notes - Data Sources

Sexual Behavior

Data on youth sexual behavior are drawn from the Wisconsin Youth Risk Behavior Survey (YRBS). The YRBS is administered to students in Wisconsin's public high schools through collaboration between the Wisconsin Department of Public Instruction and the U.S. Centers for Disease Control and Prevention (CDC). The Department of Public Instruction (DPI) has administered the YRBS in the spring every two years, beginning in 1993. Data from 1995 were not included in this report because a small sample size that year made survey results unreliable.

In the sexual behavior tables (Tables 1-3), the 95 percent confidence interval (the "+/-" row) is in parentheses. Add the confidence interval value to the estimated percent to find the high boundary of the 95 percent confidence interval, and subtract it from the percent to find the low boundary. For example, on the top line of Table 1 (page 15), 44.6 percent of Wisconsin high school students in 2007 reported having had sexual intercourse. Adding and subtracting the 2.3 percent value yields a 95 percent confidence interval of 42.3 to 46.9 percent. This means that 95 out of 100 random surveys would estimate that 42.3 to 46.9 percent of public high school students in Wisconsin would report having had sexual intercourse.

Same-sex sexual contact. The same-sex sexual contact measure is calculated from the 2007 YRBS question about sex of partners and the respondent's sex (male or female). Same-sex contact is defined as males who have had sexual contact with only males or both males and females, and females who have had sexual contact with only females or both males and females.

Additional information about the Wisconsin Youth Risk Behavior Survey is available from the Department of Public Instruction at <http://dpi.wi.gov/sspw/yrbsindx.html>.

Sexually Transmitted Diseases (STDs)

STD case surveillance data are collected by the Wisconsin Division of Public Health (DPH). In Wisconsin, state statute requires health care providers to report cases of six (now five) STDs to local health departments, which forward the reports to DPH. This publication includes data about four reportable STDs: chlamydia, gonorrhea, syphilis, and initial occurrence of genital Herpes simplex virus infections. (Note: As of March 1, 2008, Herpes simplex virus is no longer a reportable condition.)

This publication includes cases diagnosed for the specified year, based on the data available at the time of publication. Additional cases diagnosed for that year may continue to be reported. Thus, these STD figures should be considered provisional, and supersede previously published reports. More information about sexually transmitted diseases in Wisconsin is available on the Department of Health Services site at <http://dhs.wisconsin.gov/communicable/STD/INDEX.HTM>.

AIDS/HIV Surveillance

Case reports are submitted to the Wisconsin AIDS/HIV Program in the Division of Public Health from private physicians, hospitals, clinics, ambulatory care facilities, sexually transmitted disease clinics, the Wisconsin correctional system, family planning clinics, perinatal clinics, Indian health clinics, blood and plasma centers, military entrance processing stations, and laboratories performing HIV testing. An HIV surveillance system continuously and systematically collects, analyzes, evaluates, and disseminates data describing important health events of the HIV epidemic. More information about AIDS/HIV in Wisconsin is available on the Department of Health Services site at <http://dhs.wisconsin.gov/aids-hiv/index.htm>.

Births

Data on live births are drawn from Wisconsin resident birth certificate files, which are part of the Wisconsin vital records system maintained by the Vital Records Section of the Bureau of Health Information and Policy. More information on Wisconsin birth statistics is available on the Department of Health Services site at <http://dhs.wisconsin.gov/births/index.htm>.

Technical Notes - Definitions

Race/Ethnicity. Cases of sexually transmitted infections, HIV infections, and live births were classified by race or Hispanic origin into one of five categories: non-Hispanic white, non-Hispanic black/African American, non-Hispanic American Indian, Hispanic/Latino, and non-Hispanic Asian. Hispanics/Latinos may be of any race. For live births, the race/ethnicity of the mother is used. The terms “African American” and “black” are used interchangeably in this publication.

Most Bureau of Health Information and Policy publications that present data on births by race/ethnicity divide the Asian birth category into “Laotian or Hmong” and “other.” The Laotian or Hmong category is not presented in this publication because population estimates necessary for computing birth rates are not available for Laotian or Hmong female teens.

Rates. Rates of teen births and of sexually transmitted diseases (except HIV/AIDS) are based on bridged population estimates generated by the Bureau of Health Information and Policy. (Due to differences in population estimates, these rates may differ somewhat from rates presented in other publications.) Rates of reported HIV cases are based on the Vintage 2007 Bridged-Race Postcensal Population Estimates generated by the National Center for Health Statistics:

<http://www.cdc.gov/nchs/about/major/dvs/popbridge/popbridge.htm>

Birth Rates

Birth rates are the number of births per 1,000 females in the age group. Rates presented in this report were rounded to the nearest tenth.

Numbers and rates of births to females aged 15-17 and 15-19 do not include births to females under age 15. These will differ from numbers published before 2006 in the standard annual reports, *Wisconsin Births and Infant Deaths* and *Births to Teens in Wisconsin*, which include births to females under age 15 in the birth statistics for females under age 18 and under age 20.

Sexually Transmitted Disease (STD) Rates

STD rates are the number of reported cases per 100,000 population aged 15-19. Rates by race/ethnicity must be viewed with caution because of incomplete reporting. For example, the percent of cases with unknown race/ethnicity was as high as 50% in 1999 for Milwaukee County.

Rates of genital herpes in particular may reflect underreporting. The diagnosis of herpes infection may be difficult for several reasons. Persons with herpes infection may be mildly symptomatic or asymptomatic when they are infected. Viral shedding from herpes lesions may last only a few days and negative lab test results may not rule out herpes infection. Some clinics have limited capacity to do more sophisticated testing for herpes.

HIV Rates

HIV rates are the number of reported cases per 100,000 population aged 15-24. Because people are often infected for several years before their HIV infection is identified, review of reported cases of HIV among persons ages 20-24 provides additional information about risk behaviors in adolescence.

Rates, percent change

The amount of increase (or decrease) in a rate measured at two different times is expressed as percent change. This percent is calculated by subtracting the earlier rate from the later rate, dividing that product by the earlier rate, then multiplying by 100.

Sexually Transmitted Diseases. Chlamydia is a sexually transmitted disease caused by a bacterium called *Chlamydia trachomatis*. Gonorrhea is an infection caused by *Neisseria gonorrhoea*. Syphilis is a sexually transmitted disease caused by a corkscrew-shaped bacterium called *Treponema pallidum*. Genital herpes includes the initial occurrence of primary genital infections with Herpes simplex virus (HSV) Type 1 and/or 2 (only the initial occurrence is reported, not repeat episodes).