



RESPIRATORY VIRUS SURVEILLANCE REPORT

Week Ending November 17, 2018

Wisconsin Department of Health Services | Division of Public Health
Bureau of Communicable Diseases | Communicable Diseases Epidemiology Section

dhs.wi.gov/dph/bcd.htm | dhsdphbcd@dhs.wi.gov





INFLUENZA LIKE ILLNESS (ILI) ACTIVITY

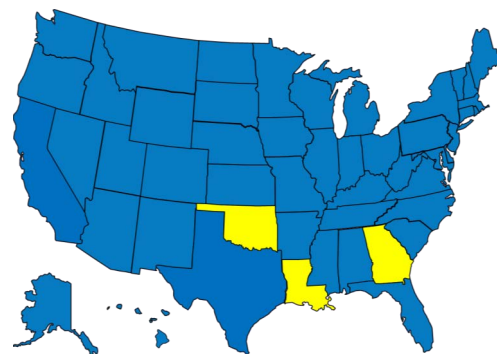
STATE OF WISCONSIN



REGION V OF US (WI, MN, IL, MI, OH, IN)



UNITED STATES



● ILI: HIGH LEVELS ● ILI: MODERATE LEVELS ● ILI: BELOW BASELINE ● ILI: INSUFFICIENT DATA

AT-A-GLANCE:

■ Weekly Respiratory Report Description

■ **Predominant Virus of the Week:**

Rhinovirus/enterovirus is the predominant virus this week.

INFLUENZA-ASSOCIATED PEDIATRIC DEATHS REPORTED:

	Week 46, 2018	October 1, 2018 to present
Wisconsin	0	0
Nationwide	1	3

CURRENT ALERTS:

- None



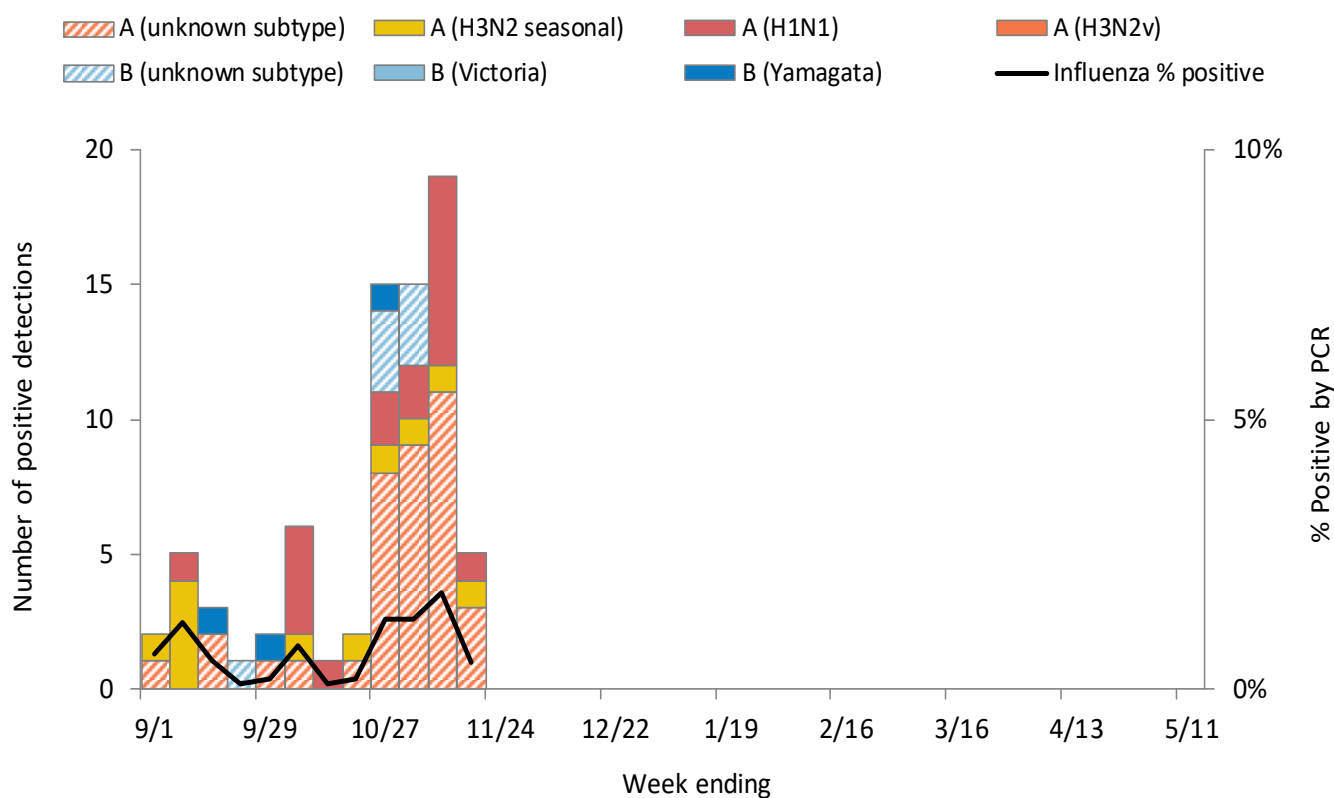
For National US influenza surveillance statistics visit: www.cdc.gov/flu/weekly/





WISCONSIN LABORATORY SURVEILLANCE FOR RESPIRATORY VIRUSES BY PCR

Wisconsin positive influenza results and subtypes by PCR

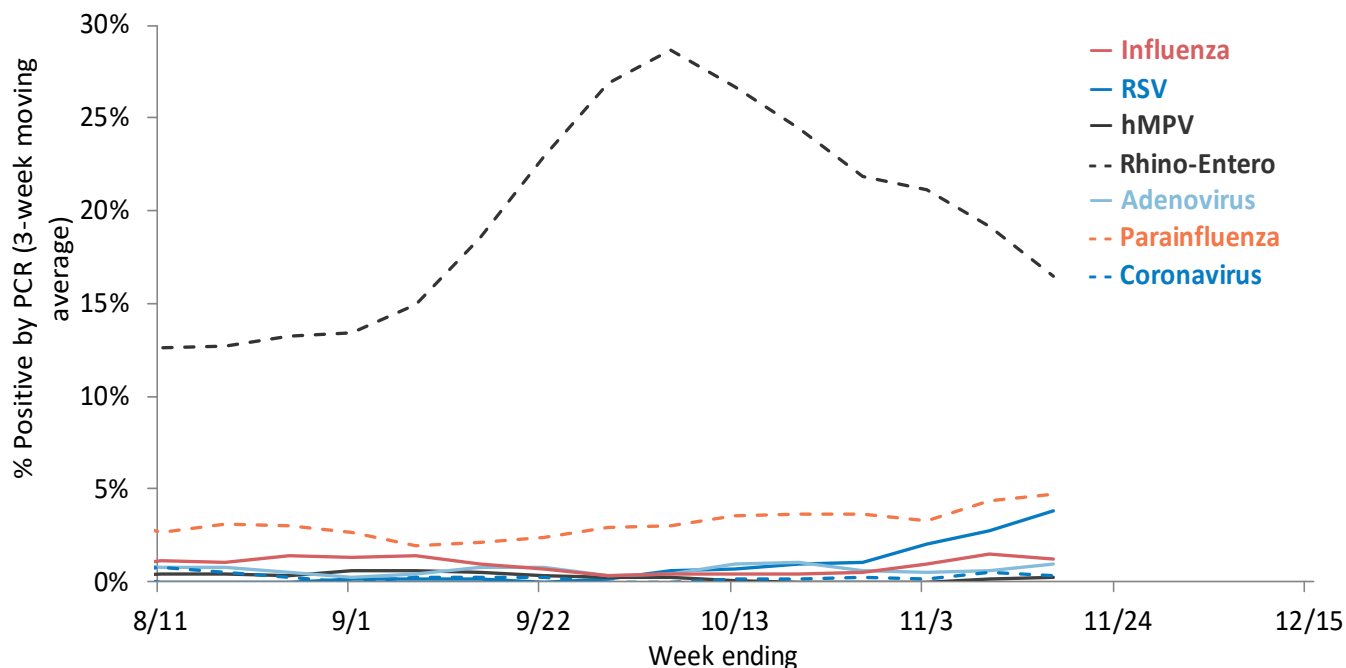


Cumulative number of positive influenza PCR tests by subtype September 1, 2018 to present

	Influenza A: 87%			Influenza B: 13%			Total
	A (2009 H1N1)	A (H3N2)	A (Unknown)	B (Victoria)	B (Yamagata)	B (Unknown)	
Total positive (n)	18	13	36	0	3	7	77
% of total positive	23%	17%	47%	0%	4%	9%	100%

WISCONSIN LABORATORY SURVEILLANCE FOR RESPIRATORY VIRUSES BY PCR

Trends in respiratory virus activity by PCR



Week ending on November 17, 2018

Respiratory virus	Tested	Positive (n)	Positive (%)	Influenza A			Influenza B		
				H3N2	2009 H1N1	Unknown	Victoria	Yamagata	Unknown
Influenza	992	5	0.5%	1	1	3	0	0	0

Respiratory virus	Tested	Positive (n)	Positive (%)	Parainfluenza 1	Parainfluenza 2	Parainfluenza 3	Parainfluenza 4
Parainfluenza	465	20	4.3%	1	12	3	4

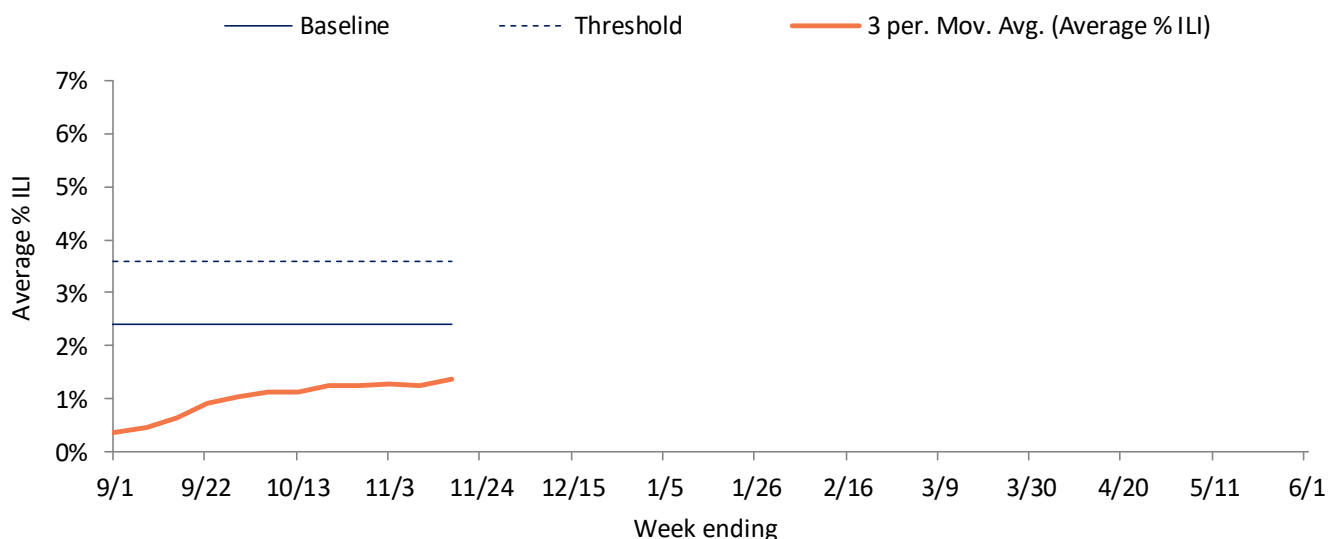
Respiratory virus	Tested	Positive (n)	Positive (%)	CoV 229E	CoV OC43	CoV NL63	CoV HKU1
Coronavirus (CoV)	253	0	0%	0	0	0	0

Respiratory virus	Tested	Positive (n)	Positive (%)
RSV	591	28	4.7%
Human metapneumovirus	475	1	0.2%
Rhino-enterovirus	446	67	15.0%
Adenovirus	253	3	1.2%

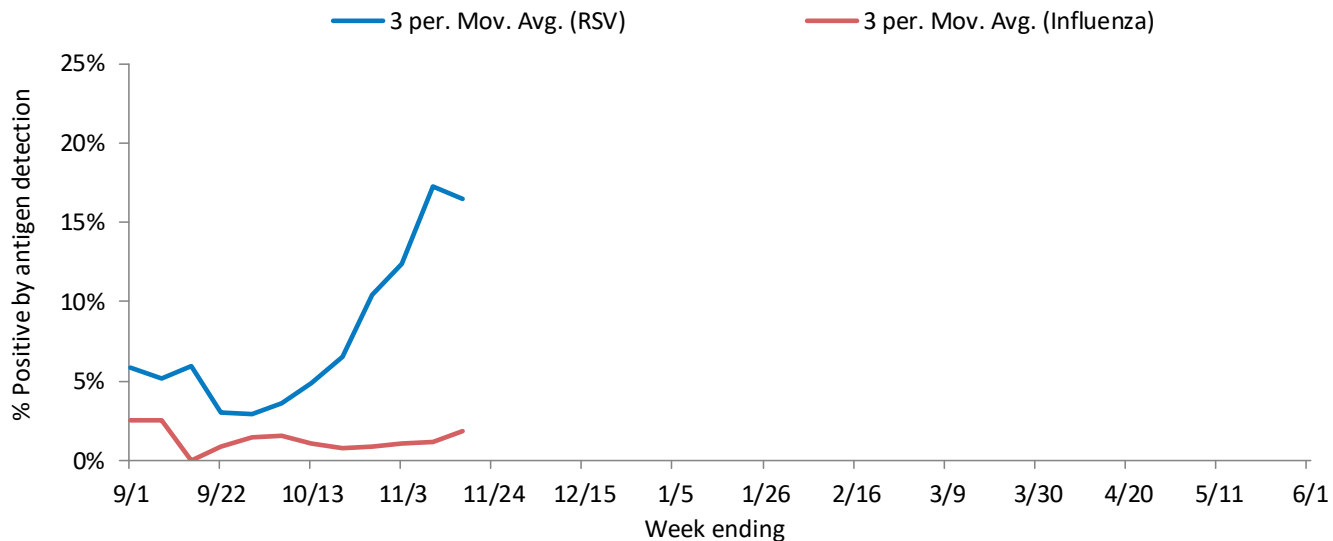
WISCONSIN STATE SUMMARY

Influenza rapid antigen tests					RSV rapid antigen tests			Influenza-like illness (ILI)		
Tested	Positive (n)			% Positive	Tested	Positive (n)	% Positive	ILI %	Baseline	Threshold
	Influenza A	Influenza B	Total							
428	4	0	4	0.9%	69	18	26.1%	1.2%	2.4%	3.6%

ILI activity trend analysis

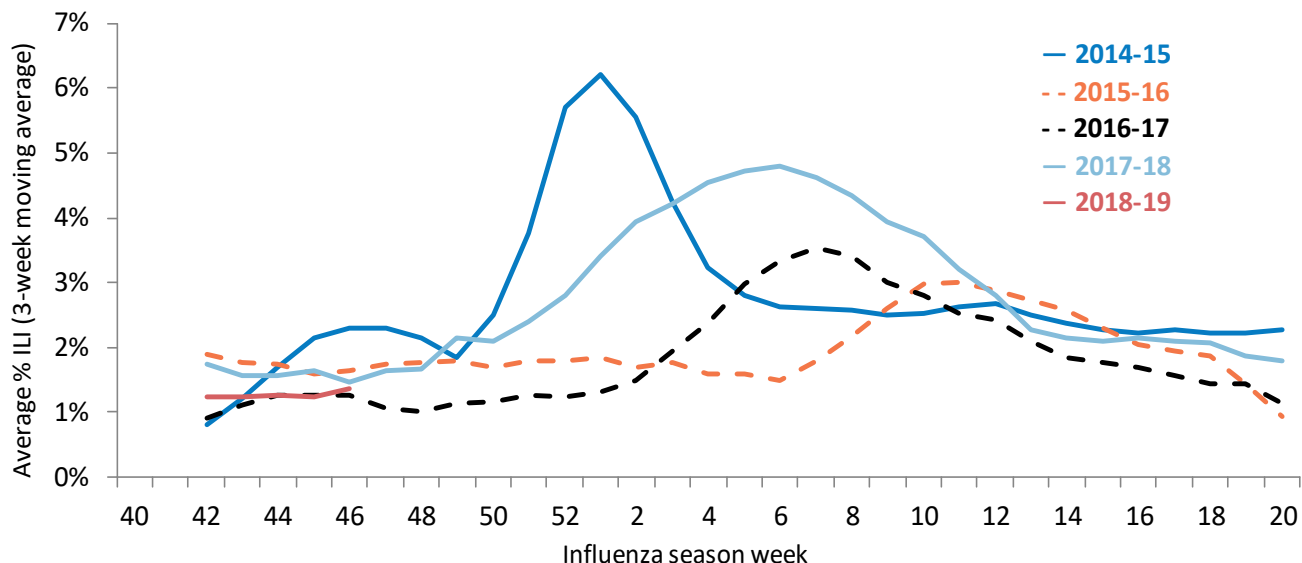


Influenza and RSV trend analysis



WISCONSIN STATE SUMMARY

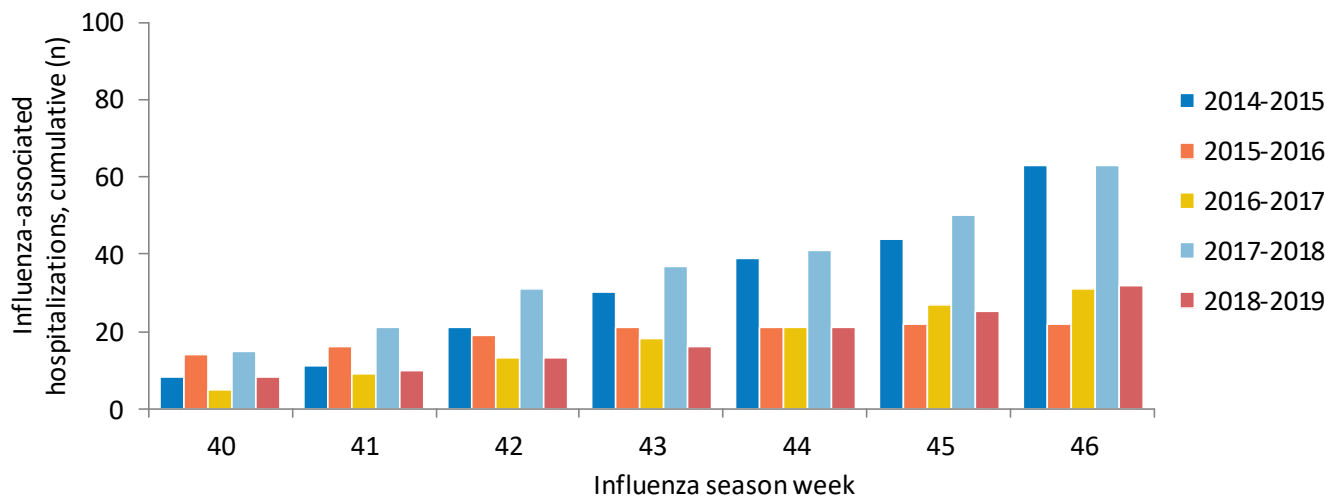
ILI activity trend analysis by influenza season, Wisconsin



Influenza-associated hospitalizations, Wisconsin Electronic Disease Surveillance System September 1, 2018 to present

Age group (years)	Total reported (n)	Influenza subtype					Admitted to ICU	Required mechanical ventilation	Pregnant	Postpartum (≤6 weeks)
		A (2009 H1N1)	A (H3N2)	A (Unknown)	B	Not reported				
<1	1	0	0	1	0	0	0	0	0	0
1-4	1	0	0	0	1	0	0	0	0	0
5-17	1	1	0	0	0	0	0	0	0	0
18-49	8	1	0	5	2	0	1	0	0	0
50-64	4	0	0	1	3	0	1	0	0	0
65+	17	1	1	8	7	0	5	1	0	0
Total	32	3	1	15	13	0	7	1	0	0

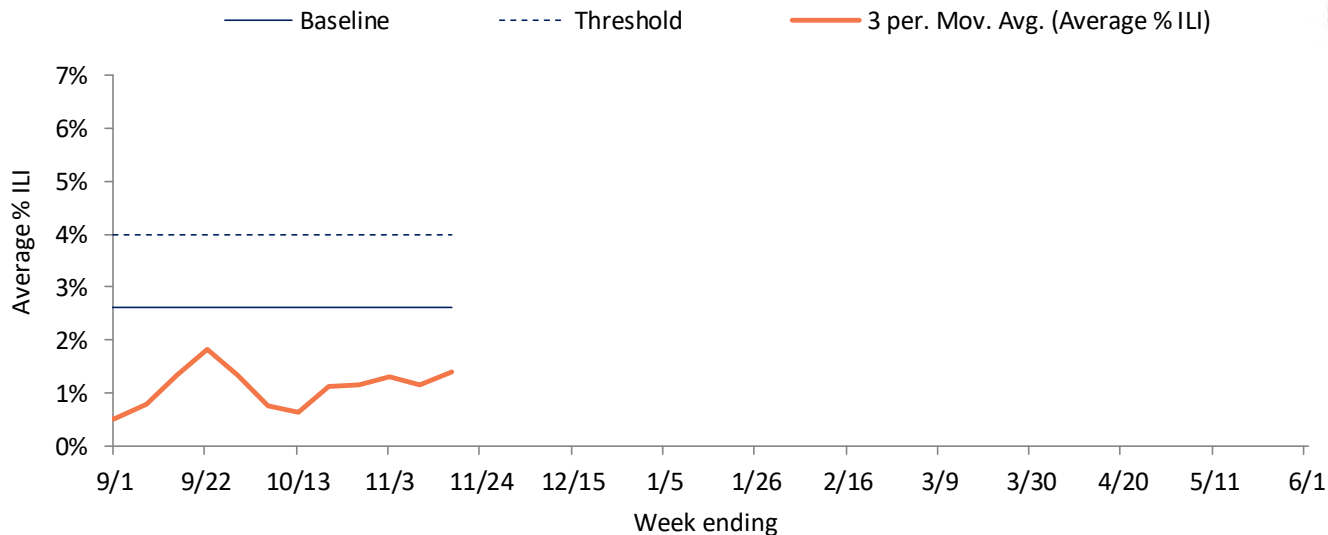
Reported cumulative influenza-associated hospitalizations by influenza season, Wisconsin



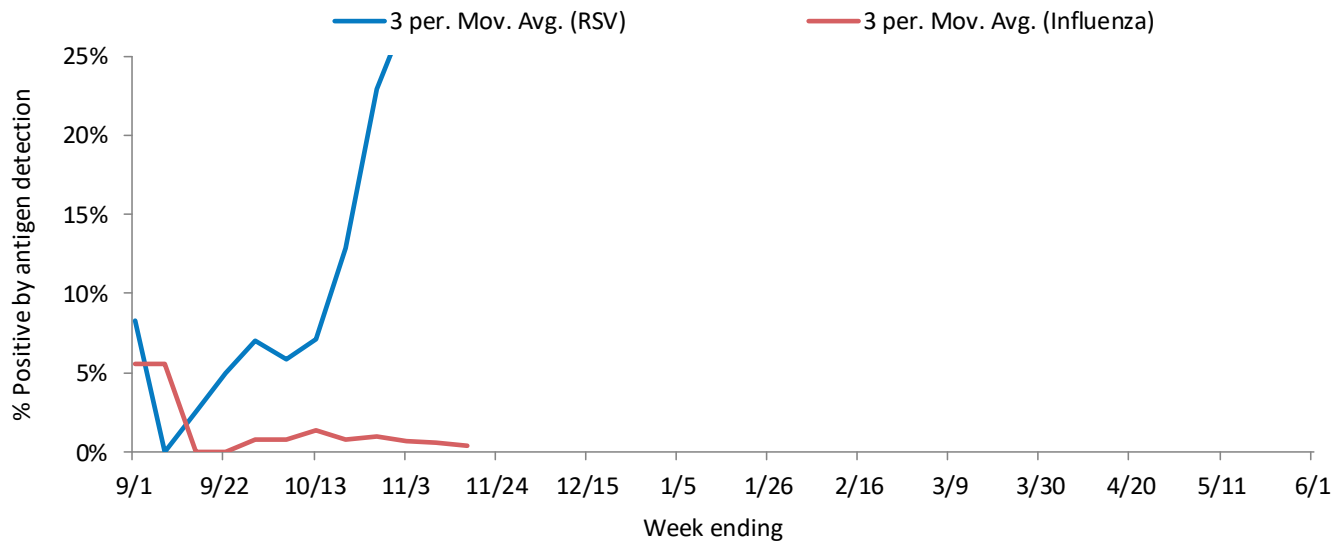
NORTHEASTERN REGION

Influenza rapid antigen tests					RSV rapid antigen tests			Influenza-like illness (ILI)		
Tested	Positive (n)			% Positive	Tested	Positive (n)	% Positive	ILI %	Baseline	Threshold
	Influenza A	Influenza B	Total							
123	0	0	0	0.0%	20	5	25.0%	1.6%	2.6%	4.0%

ILI activity trend analysis



Influenza and RSV trend analysis

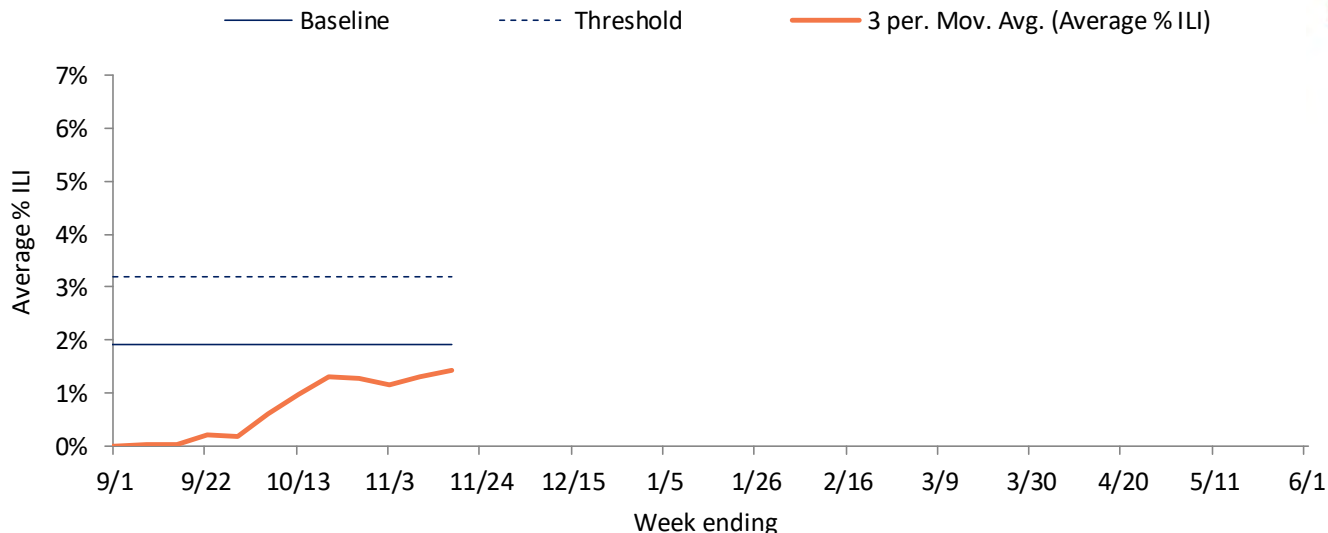




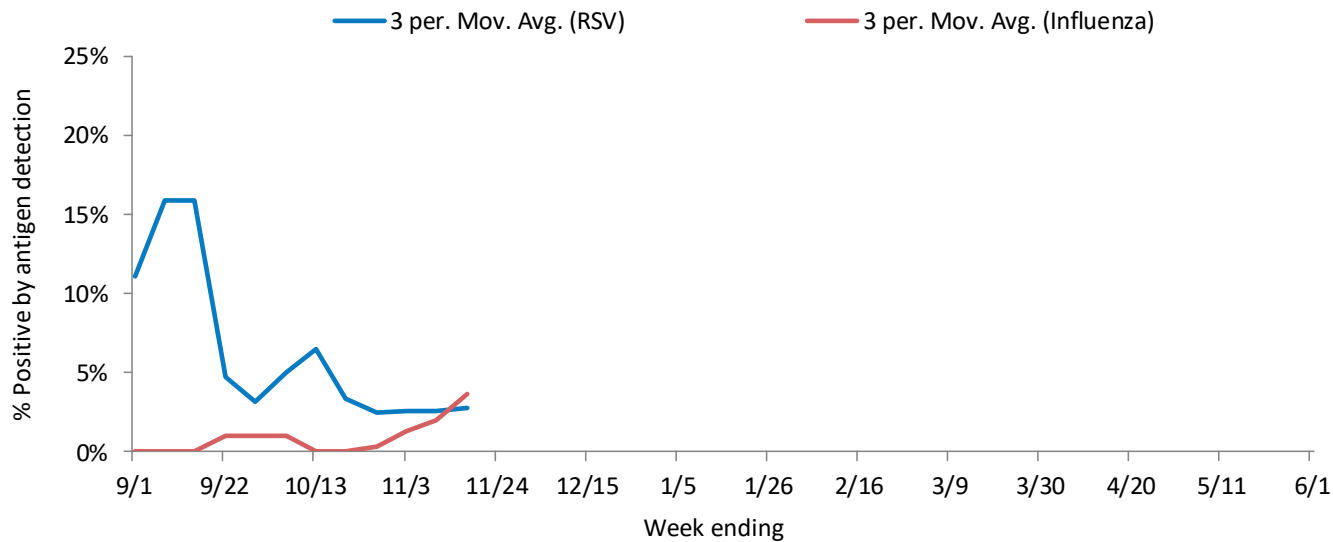
NORTHWESTERN REGION

Influenza rapid antigen tests					RSV rapid antigen tests			Influenza-like illness (ILI)		
Tested	Positive (n)			% Positive	Tested	Positive (n)	% Positive	ILI %	Baseline	Threshold
	Influenza A	Influenza B	Total							
133	7	1	8	6.0%	28	1	3.6%	1.6%	1.9%	3.2%

ILI activity trend analysis



Influenza and RSV trend analysis

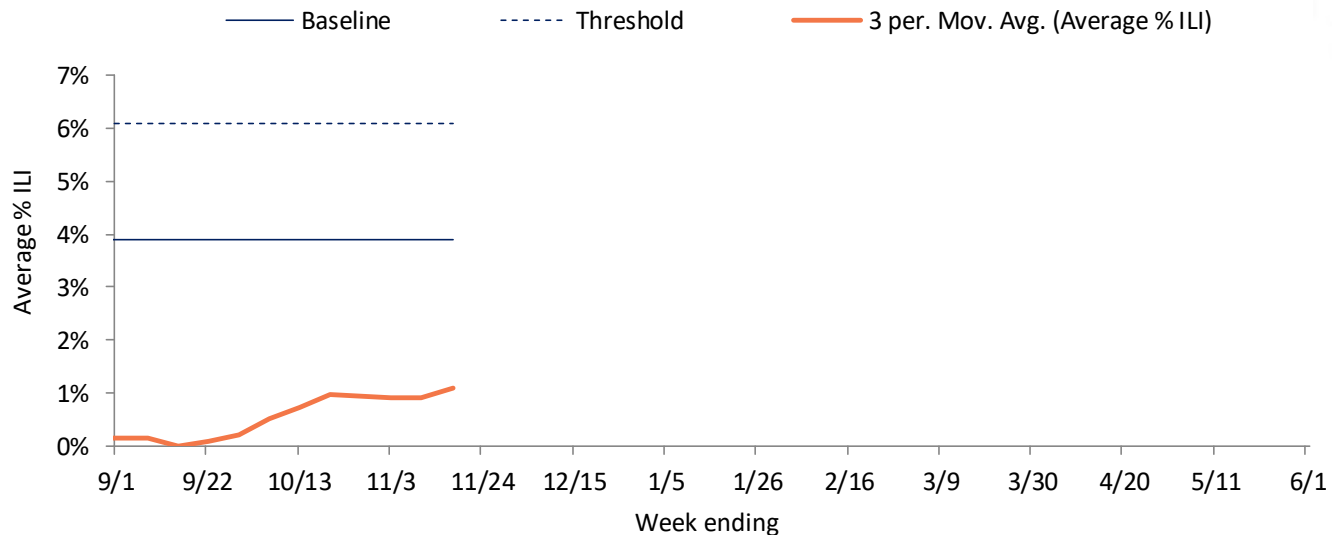




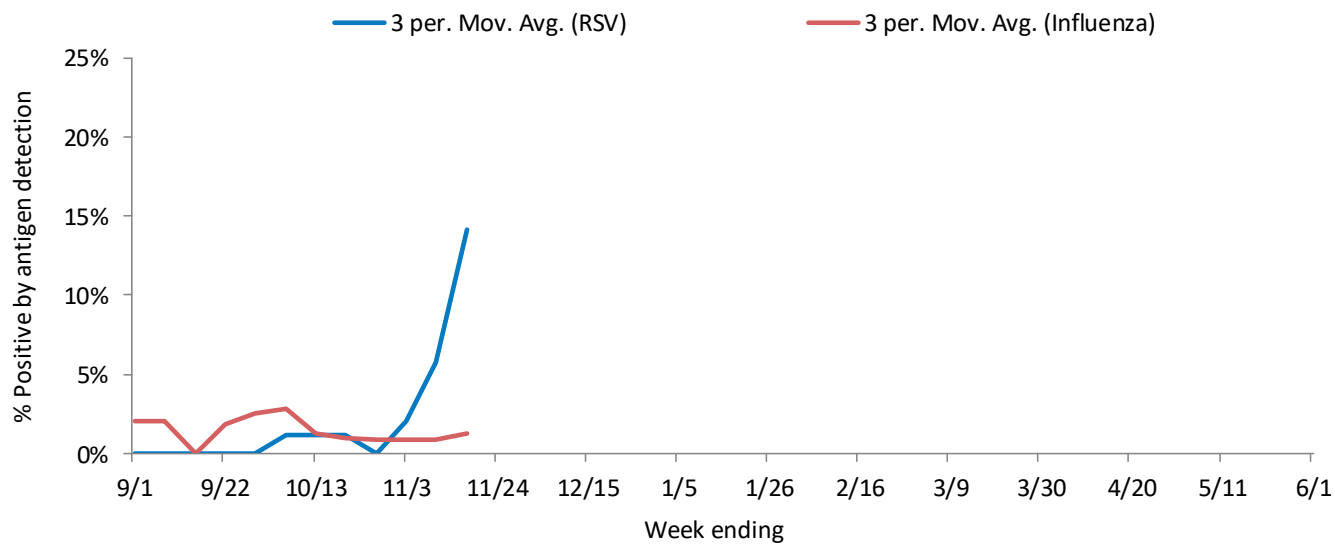
SOUTHEASTERN REGION

Influenza rapid antigen tests				RSV rapid antigen tests			Influenza-like illness (ILI)			
Tested	Positive (n)			% Positive	Tested	Positive (n)	% Positive	ILI %	Baseline	Threshold
	Influenza A	Influenza B	Total							
160	1	2	3	1.9%	4	1	25.0%	1.4%	4.0%	6.1%

ILI activity trend analysis



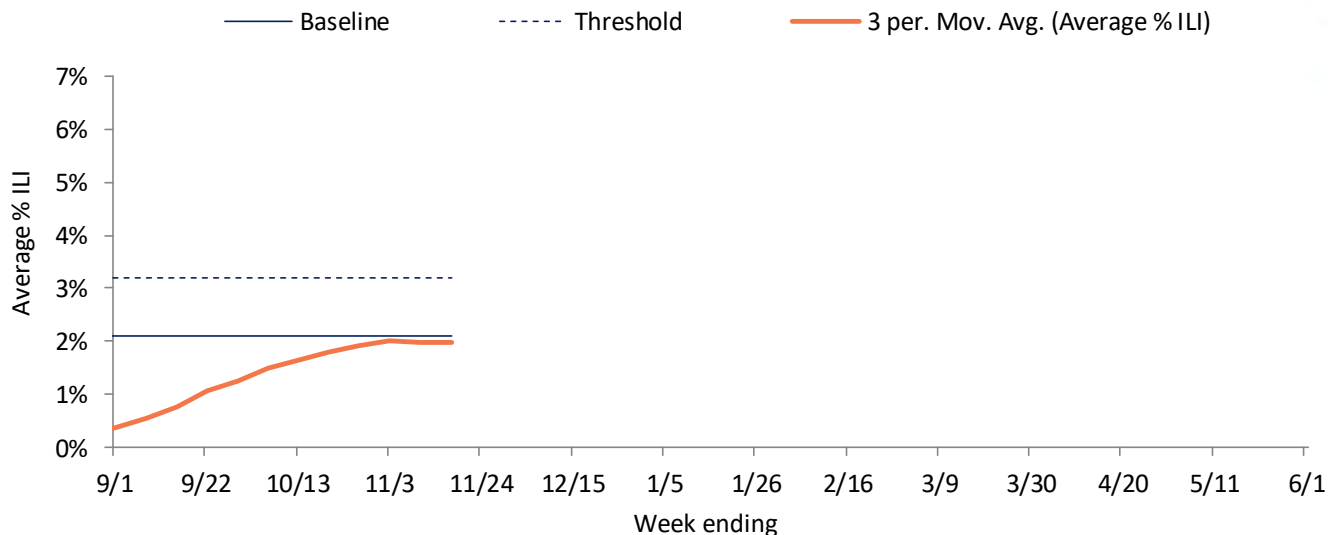
Influenza and RSV trend analysis



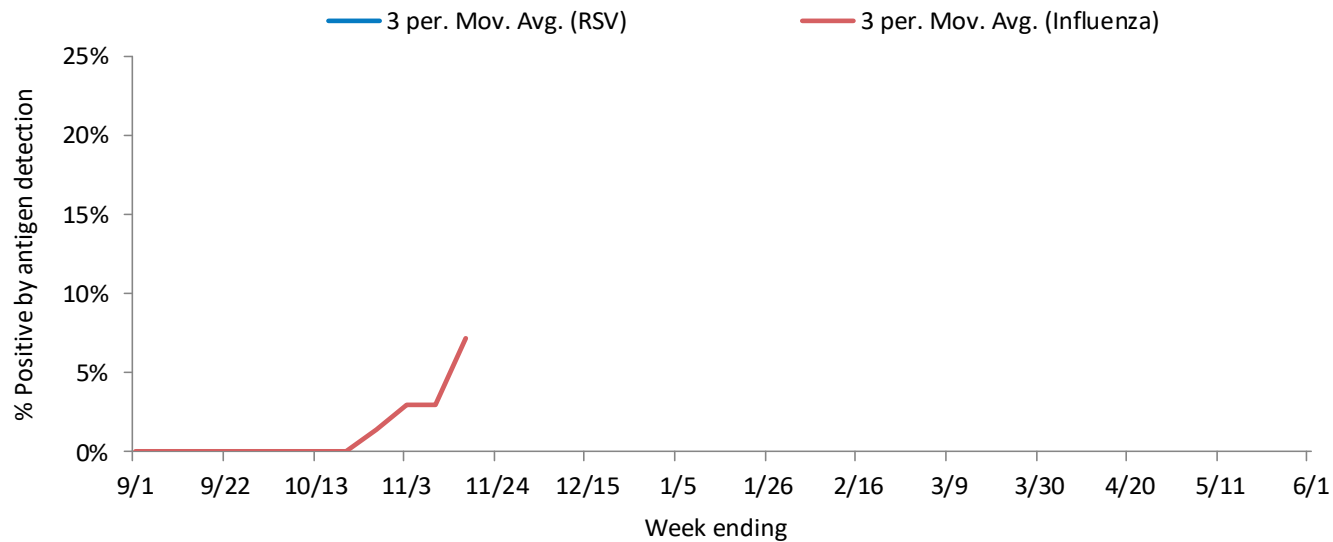
SOUTHERN REGION

Influenza rapid antigen tests					RSV rapid antigen tests			Influenza-like illness (ILI)		
Tested	Positive (n)			% Positive	Tested	Positive (n)	% Positive	ILI %	Baseline	Threshold
	Influenza A	Influenza B	Total							
12	2	0	2	16.7%	0	0	#DIV/0!	2.1%	2.1%	3.2%

ILI activity trend analysis

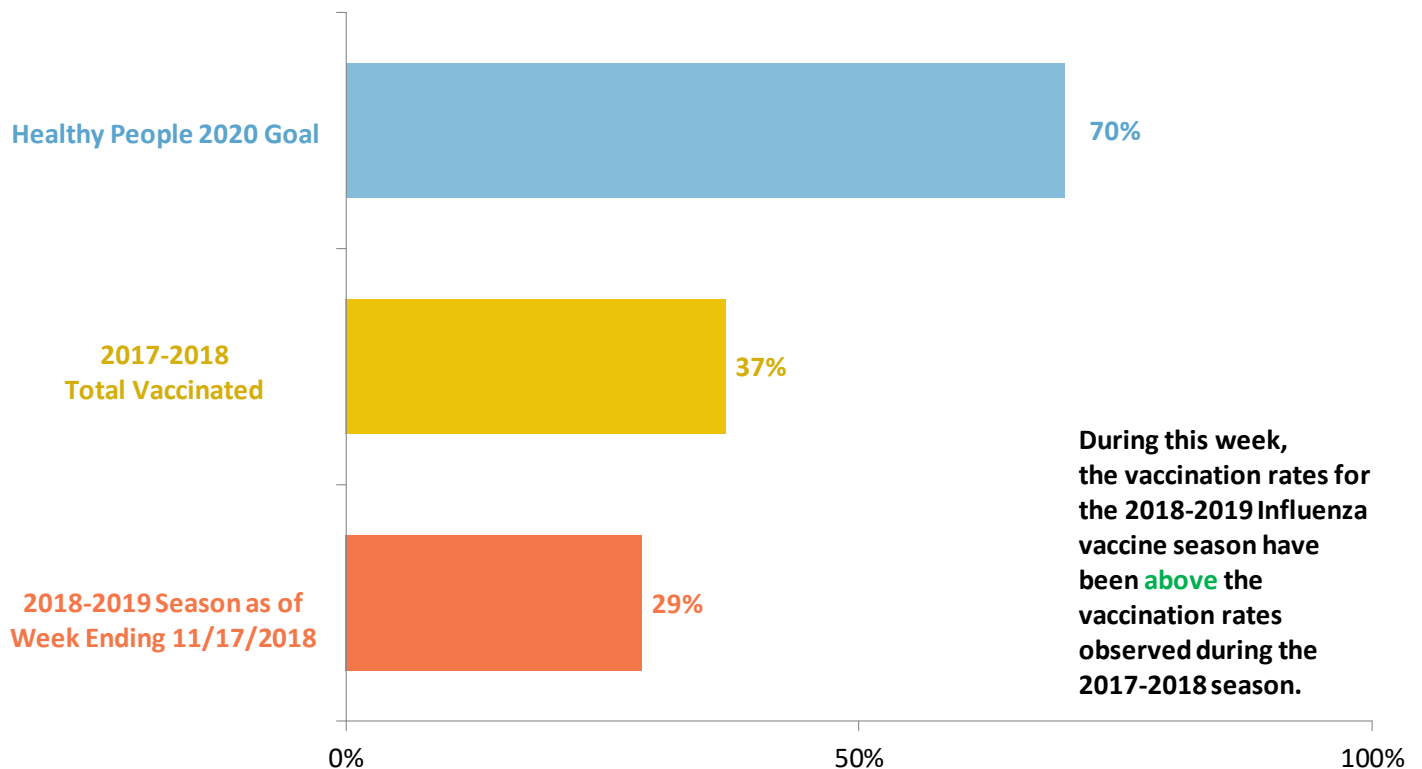


Influenza and RSV trend analysis



SEASONAL INFLUENZA VACCINATION

Cumulative percentage of Wisconsin residents who received 1 or more doses of influenza vaccine, 2018-2019 influenza season



Data source: All influenza vaccination rates presented were calculated using data from the Wisconsin Immunization Registry (numerator) and Wisconsin population estimates (denominator).

Influenza vaccine composition 2018-2019:

The **trivalent** vaccines for use in the 2018-2019 influenza season contain the following:

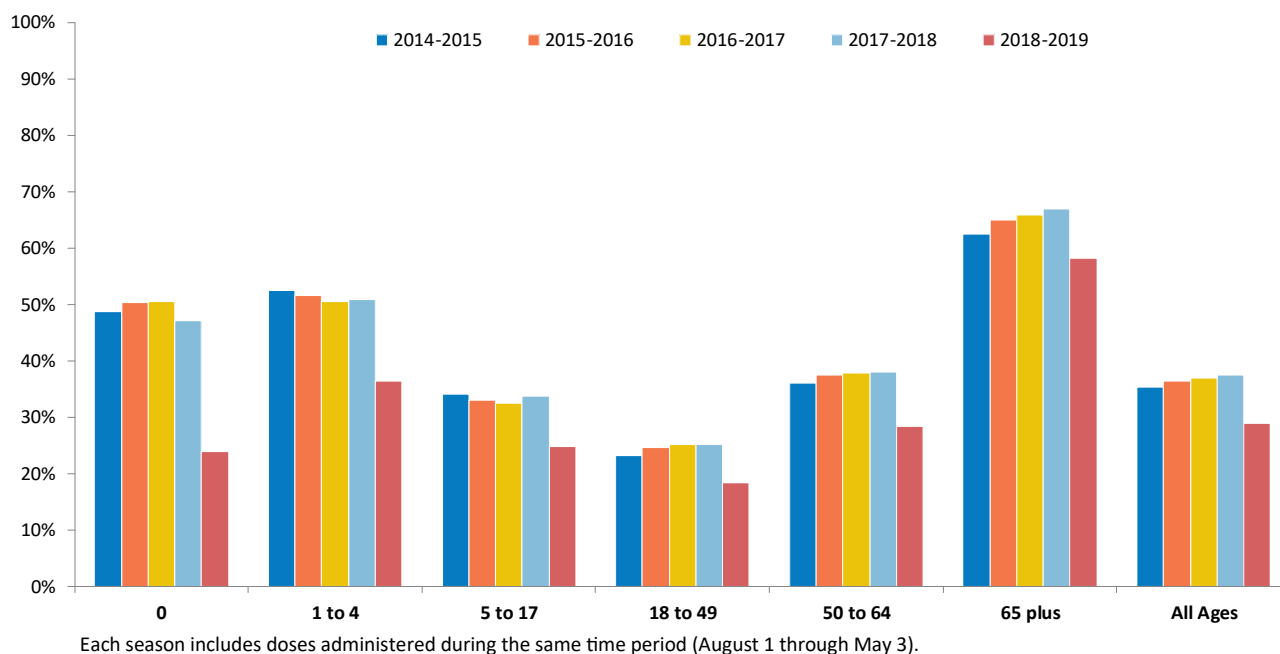
- A/Michigan/45/2015 (H1N1)pdm09-like virus
- A/Singapore/INFIMH-16-0019/2016 A(H3N2)-like virus (updated)
- B/Colorado/06/2017-like (Victoria lineage) virus (updated)

It is recommended that **quadrivalent** vaccines containing two influenza B viruses contain the above three viruses and:

- B/Phuket/3073/2013-like virus (B/Yamagata lineage)

SEASONAL INFLUENZA VACCINATION

Percentage of Wisconsin residents who received one or more doses of influenza vaccine, by age group and influenza season



Percentage of Wisconsin residents who received one or more doses of influenza vaccine, by race and ethnicity and region, 2018-2019 influenza season

