

No Wrong Door Supporting Kids Together Updates

Debbie Borquist-Conlon, DSW, APSW, Project Coordinator



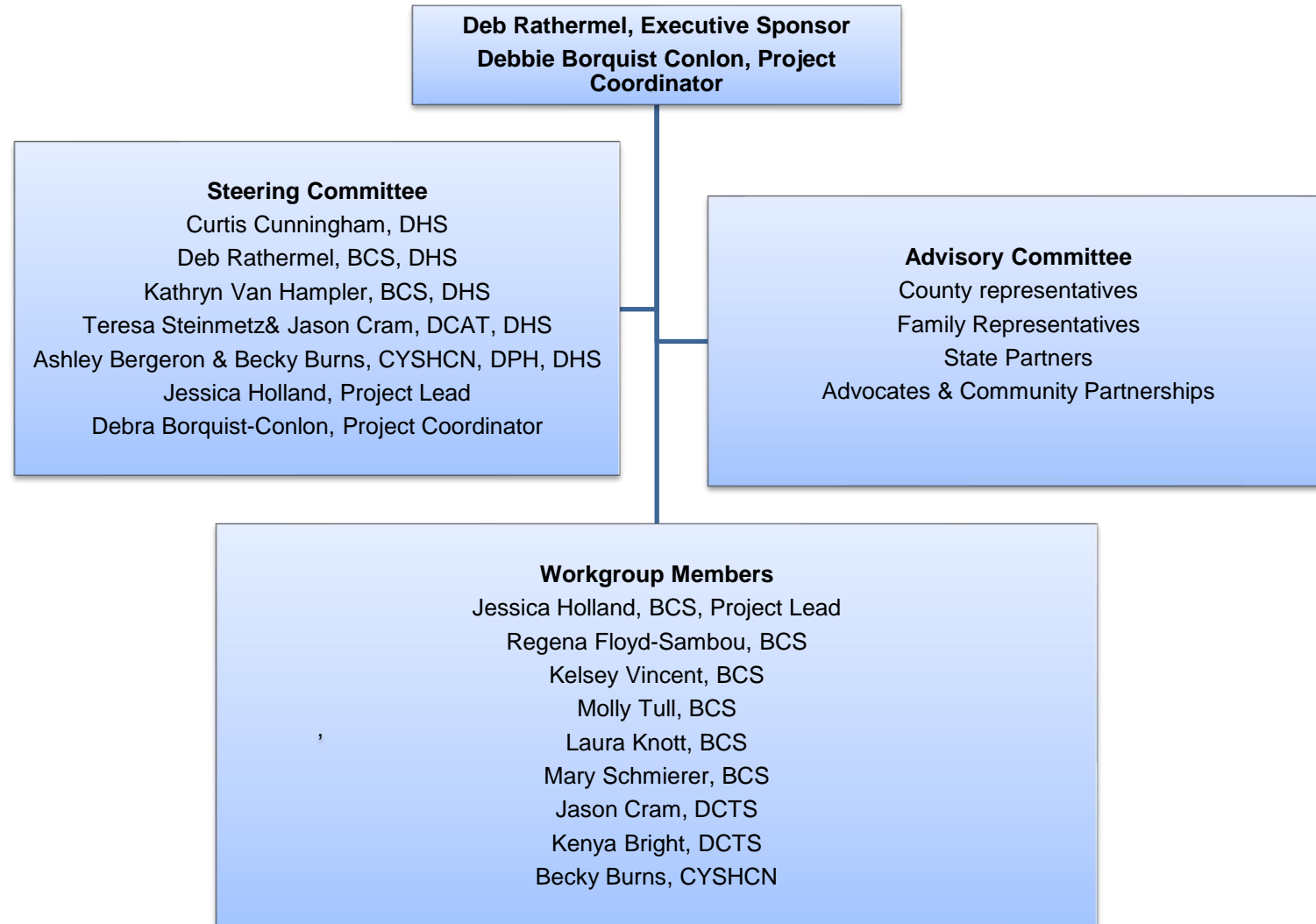
No Wrong Door-Supporting Kids Together

- ❖ We are building upon the previous **BCS Program Access** initiative and continuing our work to improve the experience for families who have children with special healthcare needs or disabilities.
- ❖ This project focuses on developing a simplified solution for families regarding –
 - initiating access to information and resources related to specialty community health care and support programs

Focus

- ✓ Systems of support for children with special needs must be grounded in Inclusivity and Cultural Reverence
- ✓ Families, when given meaningful information, are best suited to decide what support they need and when they need it
- ✓ Systems and programs responsible for meeting the needs of children with special needs must be easily accessible

ARPA No Wrong Door-Supporting Kids Together



Project Updates - Four Key Activities

- ❖ Branding and Marketing
- ❖ Leveraging Technology
- ❖ Strengthening Partnerships
 - ❖ Resource Hub

**Questions?
Thank you!**

