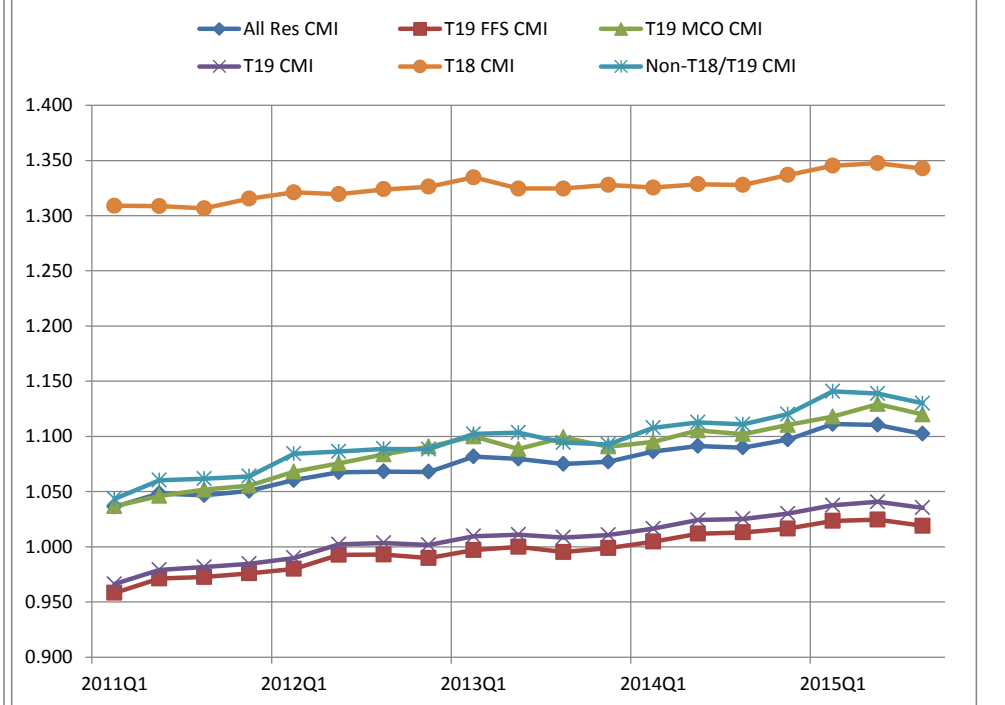
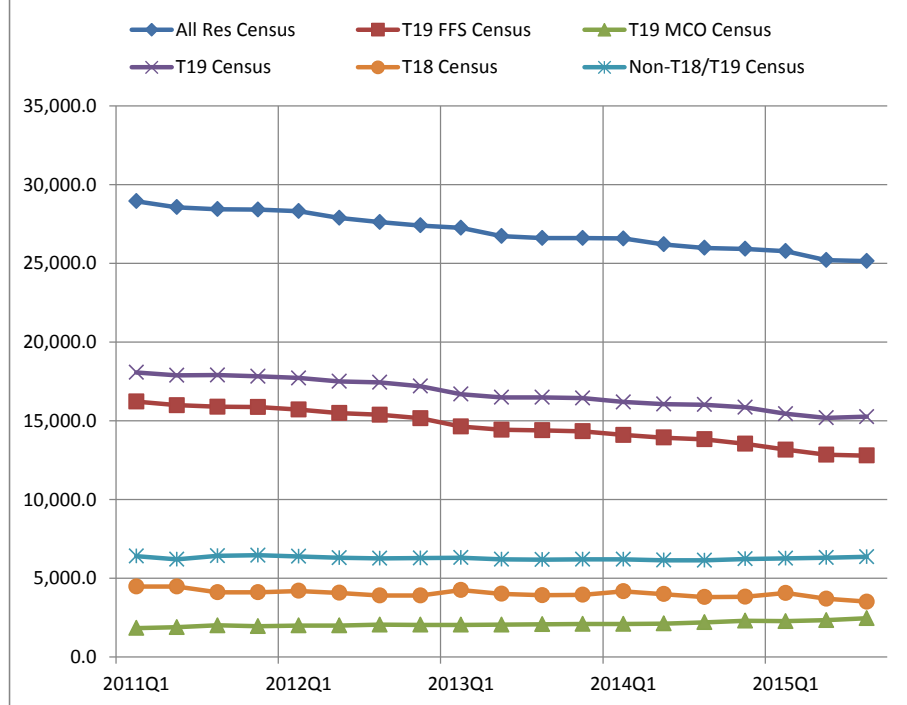


# Wisconsin Nursing Home Census and Case Mix History

Excludes state owned/operated facilities and non-Medicaid facilities; excludes DD, vent. and TBI residents

Picture Quarter	All Res Census	T19 FFS Census	T19 MCO Census	T19 Census	T18 Census	Non-T18/T19 Census	All Res CMI	T19 FFS CMI	T19 MCO CMI	T19 CMI	T18 CMI	Non-T18/T19 CMI
2011Q1	28,957.3	16,231.2	1,843.4	18,074.6	4,473.5	6,409.2	1.036	0.958	1.037	0.966	1.309	1.043
2011Q2	28,574.0	15,996.2	1,896.9	17,893.1	4,472.6	6,208.2	1.048	0.971	1.046	0.979	1.309	1.060
2011Q3	28,453.1	15,900.4	2,012.7	17,913.0	4,117.7	6,422.4	1.047	0.973	1.052	0.982	1.307	1.062
2011Q4	28,416.0	15,881.0	1,954.5	17,835.5	4,118.0	6,462.5	1.051	0.976	1.055	0.985	1.315	1.064
2012Q1	28,319.2	15,718.7	2,004.5	17,723.2	4,202.9	6,393.1	1.060	0.980	1.068	0.990	1.321	1.084
2012Q2	27,888.7	15,497.1	2,008.7	17,505.9	4,078.2	6,304.7	1.068	0.993	1.075	1.002	1.319	1.086
2012Q3	27,624.9	15,389.2	2,057.0	17,446.2	3,901.4	6,277.3	1.068	0.993	1.084	1.004	1.324	1.089
2012Q4	27,414.8	15,164.4	2,049.6	17,214.0	3,912.6	6,288.2	1.068	0.990	1.091	1.002	1.326	1.088
2013Q1	27,265.5	14,649.4	2,047.0	16,696.4	4,252.9	6,316.2	1.082	0.997	1.100	1.010	1.335	1.102
2013Q2	26,732.2	14,441.0	2,057.6	16,498.7	4,022.3	6,211.2	1.080	1.000	1.089	1.011	1.325	1.104
2013Q3	26,608.7	14,408.6	2,084.9	16,493.5	3,927.3	6,187.9	1.075	0.995	1.099	1.008	1.325	1.094
2013Q4	26,613.4	14,338.7	2,104.0	16,442.7	3,958.3	6,212.5	1.077	0.999	1.091	1.011	1.328	1.093
2014Q1	26,584.9	14,106.7	2,095.9	16,202.6	4,171.5	6,210.8	1.086	1.005	1.095	1.016	1.325	1.108
2014Q2	26,216.8	13,940.6	2,125.5	16,066.1	3,997.6	6,153.2	1.091	1.012	1.105	1.024	1.328	1.113
2014Q3	25,988.9	13,828.0	2,206.2	16,034.2	3,807.9	6,146.8	1.090	1.013	1.102	1.025	1.328	1.111
2014Q4	25,922.3	13,553.5	2,302.3	15,855.8	3,834.6	6,231.9	1.097	1.016	1.110	1.030	1.337	1.120
2015Q1	25,784.2	13,172.2	2,278.8	15,451.0	4,065.8	6,267.4	1.111	1.023	1.118	1.037	1.345	1.141
2015Q2	25,214.7	12,847.4	2,343.6	15,191.1	3,708.4	6,315.2	1.110	1.025	1.129	1.041	1.347	1.139
2015Q3	25,152.7	12,796.8	2,468.6	15,265.4	3,515.8	6,371.4	1.102	1.019	1.120	1.035	1.343	1.130

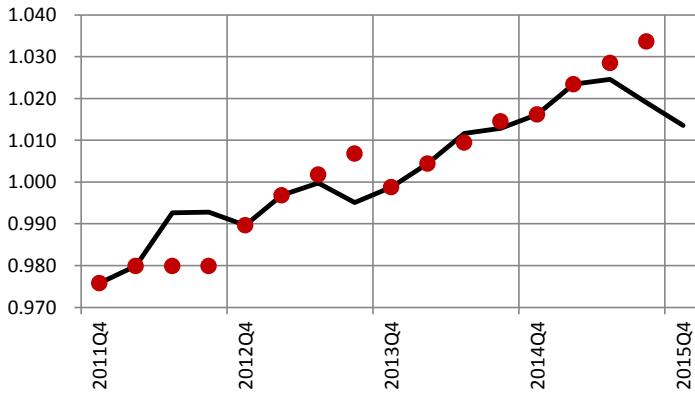


# Analysis of Change in Quarterly T19 FFS Non-DD Case Mix Index

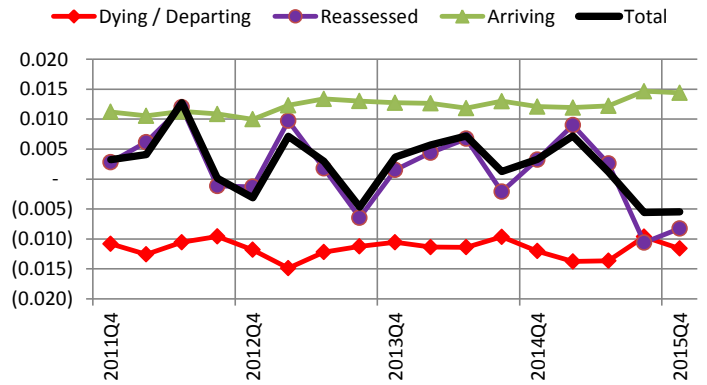
Excludes state owned/operated facilities and non-Medicaid facilities; excludes DD, vent. and TBI residents

Rate Year	Rate Quarter	Picture Quarter	Prior Qtr CMI	% Dying	CMI of Deaths	% Departing	CMI of Departed	Continuing CMI	Reassessed CMI	Change in Reassessed CMI	% Arriving	CMI of Arrivals	Current Qtr CMI
SFY13	2012Q3	2011Q4	0.973	6.3%	1.084	6.3%	1.021	0.962	0.965	0.003	11.9%	1.059	0.976
	2012Q4	2012Q1	0.976	7.0%	1.100	6.5%	1.023	0.963	0.969	0.006	12.0%	1.057	0.980
	2013Q1	2012Q2	0.980	6.8%	1.100	6.8%	1.006	0.969	0.981	0.012	11.7%	1.077	0.993
	2013Q2	2012Q3	0.993	6.0%	1.100	6.8%	1.030	0.983	0.982	(0.001)	11.5%	1.076	0.993
SFY14	2013Q3	2012Q4	0.993	6.6%	1.112	6.5%	1.043	0.981	0.980	(0.001)	11.0%	1.069	0.990
	2013Q4	2013Q1	0.990	8.0%	1.106	6.9%	1.052	0.975	0.984	0.010	10.8%	1.095	0.997
	2014Q1	2013Q2	0.997	7.1%	1.116	6.9%	1.040	0.985	0.986	0.002	11.8%	1.098	1.000
	2014Q2	2013Q3	1.000	5.9%	1.129	6.8%	1.046	0.989	0.982	(0.006)	11.8%	1.092	0.995
SFY15	2014Q3	2013Q4	0.995	6.5%	1.111	6.6%	1.032	0.985	0.986	0.002	11.7%	1.094	0.999
	2014Q4	2014Q1	0.999	7.1%	1.112	6.8%	1.038	0.987	0.992	0.004	11.6%	1.099	1.004
	2015Q1	2014Q2	1.004	7.0%	1.121	7.2%	1.040	0.993	1.000	0.007	12.2%	1.096	1.012
	2015Q2	2014Q3	1.012	6.4%	1.118	7.0%	1.045	1.002	1.000	(0.002)	12.1%	1.107	1.013
SFY16	2015Q3	2014Q4	1.013	7.3%	1.119	7.2%	1.062	1.001	1.004	0.003	11.6%	1.106	1.016
	2015Q4	2015Q1	1.016	8.5%	1.131	6.8%	1.062	1.002	1.011	0.009	11.7%	1.111	1.023
	2016Q1	2015Q2	1.023	7.8%	1.136	7.4%	1.078	1.010	1.012	0.003	12.0%	1.112	1.025
	2016Q2	2015Q3	1.025	6.2%	1.111	7.0%	1.077	1.015	1.004	(0.011)	12.3%	1.123	1.019
SFY17	2016Q3	2015Q4	1.019	6.9%	1.128	7.4%	1.064	1.007	0.999	(0.008)	12.3%	1.115	1.014

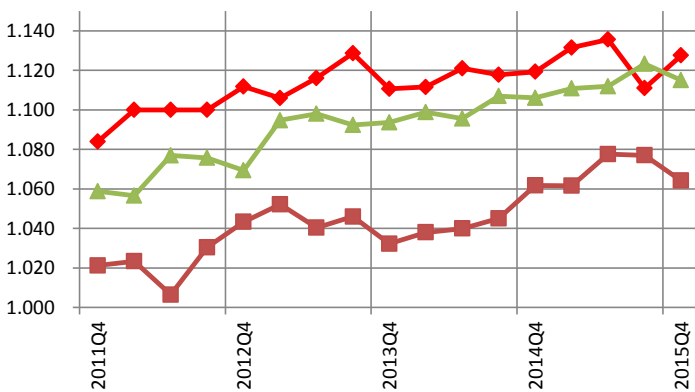
T19 FFS Non-DD CMI - Actual vs. Model



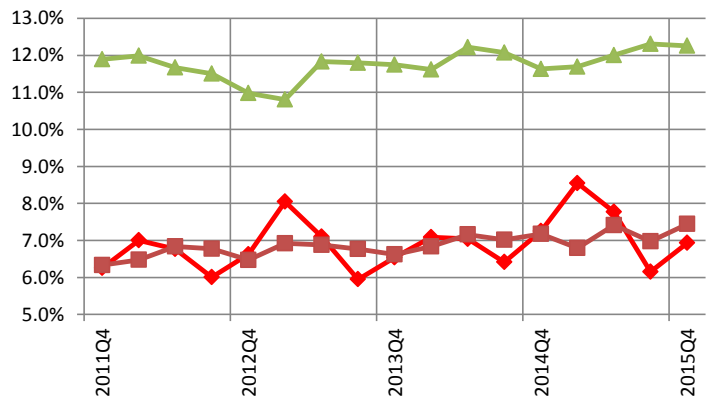
Components of CMI Change



CMI of Deaths, CMI of Departed, CMI of Arrivals



% Dying, % Departing, % Arriving



# SFY17 Wisconsin Nursing Home Modeling Scenarios

Scen 1: Internal scenario for model calibration

Scen 2: SFY17 Base Scenario using SFY16 average rates & SFY16 average T19 CMI's, with DHS SFY17 budgeted PDs

Scen 3: Impute 2015 CRs (from available 2014 final CRs) and calculate rates for SFY17 using SFY16 formula and average SFY16 acuity

Scen 4: Apply 2015 R2 cost reports fields (bed count, property valuation, PDs for EMMUA, single occ. rooms, prop. tax, private room affidavit, incentives, etc.)

Scen 5: Labor Factors - Update to SFY17

Scen 6: Average SFY17 acuity and BehCI incentive

Scen 7: Remove \$2 direct care corridor

Scen 8: Adjust Cost Center Bases to Hit Expenditure Targets