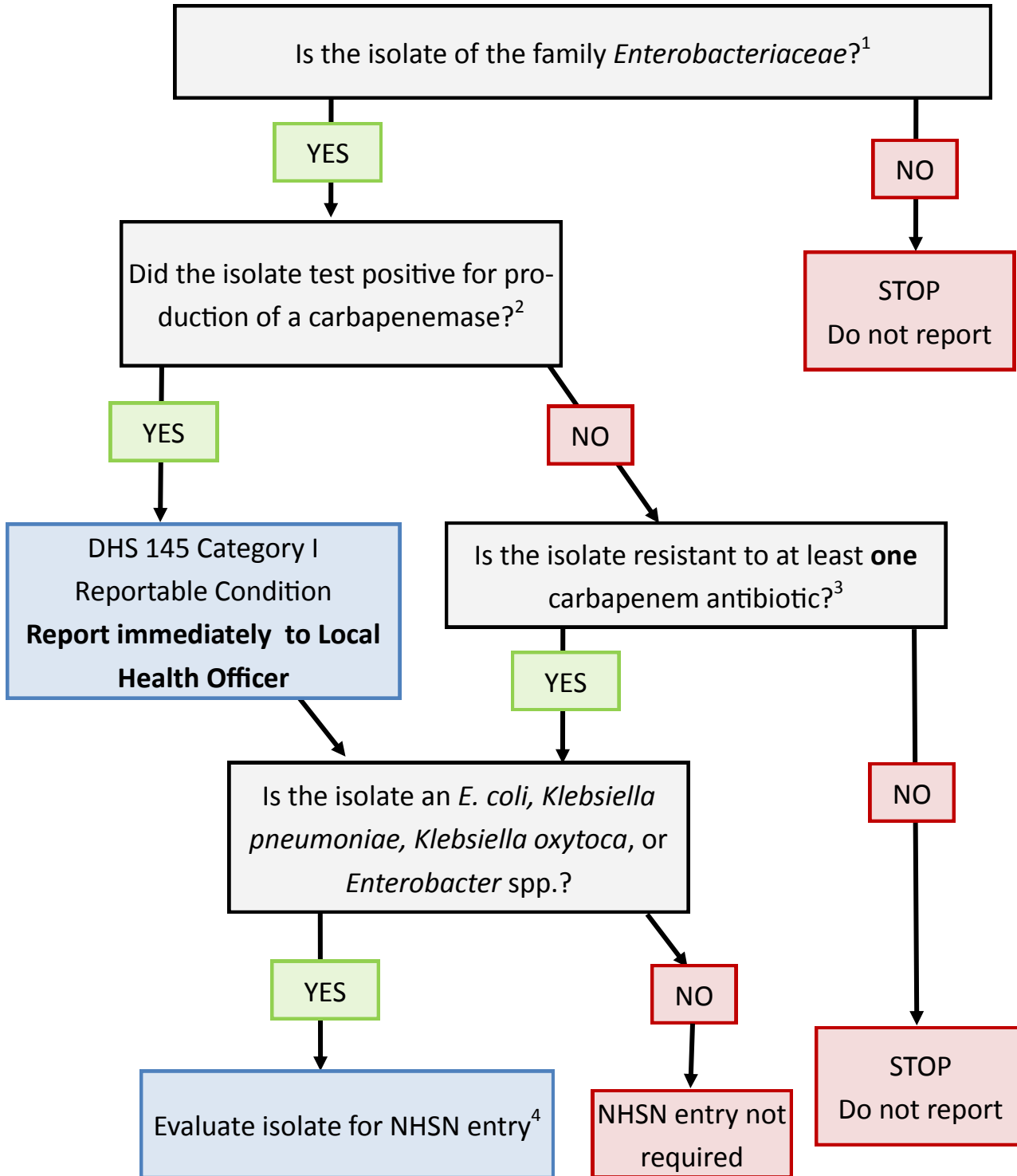


Carbapenem-resistant *Enterobacteriaceae* (CRE) Reporting Flowchart



¹Enteric bacteria genera include: *Escherichia* (*E. coli*), *Klebsiella*, *Enterobacter*, *Citrobacter*, *Morganella*, *Proteus*, *Serratia*, *Providencia*, *Raoultella*, *Hafnia*, and others.

²Recognized tests include polymerase chain reaction (PCR), modified carbapenemase inactivation method (mCIM), Carba-NP.

³MIC \geq 4 mcg/mL for doripenem, imipenem, and meropenem or \geq 2 mcg/mL for ertapenem

⁴ https://www.cdc.gov/nhsn/PDFs/pscManual/12pscMDRO_CDADcurrent.pdf