

November 17, 2016
WPHA-WALHDAB Joint public affairs committee update

Agenda

- Who is the Joint Public Affairs Committee?
- Legislative priorities
- Forms for members
- Legislative grid

Joint public affairs committee

- WALHDAB - 7 members
- WPHA – 7 members
- Staff
 - Jamie Michael, BadgerBay
 - Alicia Schweitzer, lobbyist, Hoven Consulting

Joint public affairs committee

- WALHDAB members
 - Co-chair: **Mary Rosner**, Marinette County Health Department
 - **Sally Nusslock**, West Allis Health Department
 - **Linda Conlon**, Oneida County Health Department
 - **Mary Dorn**, Outagamie County Public Health Division
 - **Elizabeth Spencer**, Board of Health (Eau Claire)
 - **Jim Stecker**, Board of Health (Calumet)
 - **Sarah Grossuesch**, Adams County Health Department

Joint public affairs committee

- WPHA members
 - Co-chair, **Kristen Grimes**, Children’s Health Alliance of Wisconsin
 - **Maureen Busalacchi**, Medical College of Wisconsin
 - **Jan Klawitter**, Wisconsin State Lab of Hygiene
 - **Darren Rausch**, Greenfield Health Department
 - **Geof Swain**, City of Milwaukee Health Department and UW School of Medicine and Public Health
 - **Anna Carpenter**, Winnebago County Health Department
 - **Sue Kunferman**, Wood County Health Department

Legislative priorities

- Short-term: Communicable disease
 - Secure funding for detection and management of communicable and infectious disease
- Mid-term: Financing for prevention services
 - Adopt Centers for Medicare and Medicaid Services (CMS) rule for medical assistance (MA) reimbursement for community prevention activities (e.g. community health workers, health educators, diabetes educators, asthma educators)
- Long-term: Health in all policies
 - Infusing health in policy decision-making, with the ultimate goal of a “health in all policies” approach in Wisconsin

Short-term: Communicable disease

- \$5 million biennium
 - All local health departments receive funds
 - Larger health departments receive additional funds
- What do we need members to do?
- Resources on WPHA and WALHDAB:
 - Advocacy tab/ Current Legislative Issues /Communicable Disease

Mid-term priority: Reimbursement

- **Goal:** Secure value-based Medicaid financing for coordinated team-based care
- Resources on WPHA and WALHDAB:
 - Advocacy tab/ Current Legislative Issues /Financing for Prevention Services



Where we started

- 2014 – Centers for Medicaid and Medicare Services (CMS) prevention rule change
 - Delivery of prevention services
 - Requires state health plan amendment
- CDC funding to the Wisconsin Department of Health Services
 - Asthma
 - Chronic disease
- Conversations among individual groups



Where we started

- WPHA-WALHDAB
 - All ages
 - Multiple health concerns
 - Healthcare continuum
 - Multiple service providers
 - Team-based approach
 - Statewide
- Children's Health Alliance of Wisconsin



Where we started

- July 2015 – committee formed
 - Community-based/public health professionals
 - Medicaid health plans
 - Health informatics
 - Health systems
- Developed the components of the initial business case
 - Reimbursement → Coordinated team-based care framework



Acknowledgements

- American Family Children's Hospital
- Anthem Blue Cross Blue Shield
- African American Breastfeeding Network
- Area Health Education Centers
- Center for Urban Population Health
- Children's Health Alliance of Wisconsin
- Children's Community Health Plan
- Children's Hospital of Wisconsin
- Metastar
- MHS Health Wisconsin
- Milwaukee County Behavioral Health Division
- Milwaukee Fire Department
- Molina Healthcare of Wisconsin
- Pharmacy Society of Wisconsin
- Rural Health Initiative
- Sixteenth Street Community Health Center
- United Voices
- United HealthCare
- Unity Health Insurance



Acknowledgements

- Wisconsin Academy of Nutrition and Dietetics
- Wisconsin Association of Local Health Departments and Boards
- Wisconsin Association of School Nurses
- Wisconsin Asthma Coalition
- Wisconsin County Behavioral Health Division
- Wisconsin Coordinating Body of the American Association of Diabetes Educators
- Wisconsin Department of Health Services
- Wisconsin Department of Public Instruction
- Wisconsin Initiative to Promote Healthy Lifestyles
- Wisconsin Primary Health Care Association
- Wisconsin Public Health Association



Initial business case

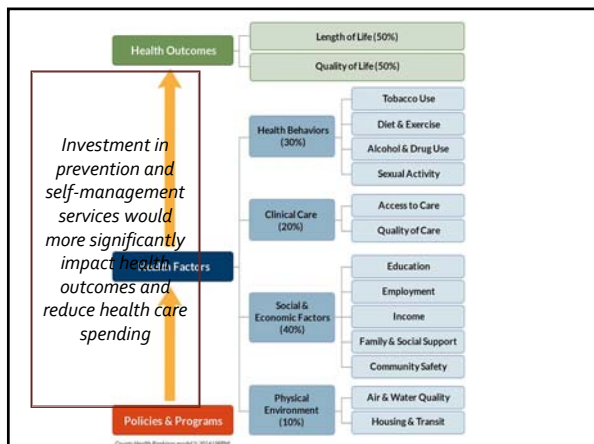
- Team of people
- Starting point of what we know now
- Living document
- Continue to build with new
 - Ideas
 - Strategies
 - Opportunities



Cause for concern


- Burden of health issues (per year) (p. 9-12)
 - Prevalence
 - Number of hospitalizations
 - Number of emergency department visits
 - Number of deaths
 - Cost
- Total cost to Wisconsin (p. 13-14)
 - Cost for all payers by disease
 - Medicaid cost by disease





Cause for concern

- Impact of social determinants and health behaviors (p. 16)
 - Wisconsin impact
 - Importance related to health



Proposed solution

- Prevention and self management services (p. 17)
 - Care planning
 - Counseling
 - Equipment use and technique
 - Goal setting
 - Health education
 - Home assessment and remediation
 - Home visiting
 - Medication adherence
 - Quality of life assessment
 - Risk factor evaluation





Proposed solution

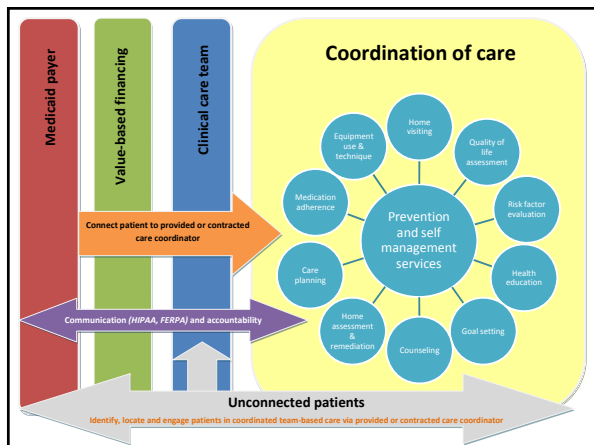
- Non clinical professionals (p. 18-24)
 - Board certified lactation consultants
 - Certified asthma educators
 - Certified diabetes educators
 - Child passenger safety technicians
 - Community health education specialists (CHES)/ Master CHES
 - Community health workers
 - Community paramedics/ Community emergency medical technicians
 - Healthy homes specialists
 - Nutrition and dietetics
 - Peer specialists
 - Pharmacists (Wisconsin Pharmacy Quality Collaborative certified)
 - Prevention specialists
 - Public health nurses
 - Registered environmental health specialists/ Registered sanitarians
 - School nurses
 - School psychologists
 - School social workers

Proposed solution

- Non-clinical professionals (p. 18-24)
 - Estimated number in Wisconsin (current capacity)
 - Certification/training requirements
 - Examples of where they are currently employed
 - Delivered prevention and self-management services
 - Current funding streams
 - Current Medicaid reimbursement for prevention and self-management services, if any

Proposed solution

- Current health care delivery system
 - Disjointed
 - Limited communication between providers
- Coordinated team-based care framework (p. 25-26)
 - Bridges gap between clinical care services, prevention and self-management services, and payers
 - Value-based financing



Evidence base

- Return on investment (p. 28-36)
 - Two studies for each health domain
 - Target population
 - Intervention provided
 - **Conducting professional**
 - **Prevention and self-management services provided**
 - Health outcome
 - Economic outcome
 - **Time to realize the outcome**
 - **Financial result - who received ROI**



Evidence base

- Implementing solutions in Wisconsin
 - HIV medical home
 - Care4Kids
 - Pathways Community HUB
 - Wisconsin Pharmacy Quality Collaborative



Capacity

- State plan amendment
- Value based payment models
 - Medicare quality incentive programs
 - Pay-for-performance
 - Accountable care organizations
 - Bundled payments
 - Patient centered medical home
 - Payment for coordination

$$V = \frac{Q + S}{C}$$

(VALUE) = (QUALITY) + (SERVICE) / (COST)

Capacity

- Health information technology options (p. 40 – 43)
 - Discussed by Wisconsin leaders
 - Some models are being implemented
 - Could potentially implement pieces of the coordinated team-based care framework
- Mapping health information technology tools to the coordinated team-based care framework (p. 44)
 - Identifies the current capacity of each tool to implement the framework



Impact – New quality measures

- CHIPRA
- HEDIS
- HRSA Health Center Program
- The Joint Commission
- Wisconsin Collaborative for Healthcare Quality
- Wisconsin Medicaid Pay-for-Performance (BadgerCare and SSI)



Impact – New measures for consideration

- CDC 6-18 Initiative
- Pathways Community HUB
- Will be adding:
 - County Health Rankings
 - Healthiest Wisconsin 2020
- Others?



Summit key themes

- Most promising
 - Structure for discussion among broad group of stakeholders
 - Expands care to community services through coordination of care



Summit key themes

- Areas of improvement
 - More clearly incorporate social determinants
 - Identify common metrics and standardized measures
 - Need to map existing pilots and programs to the framework
 - Need strong IT to connect all components



Next steps

- Coordinated Team-based Care Coalition of Wisconsin
 - Update the initial business case:
 - Incorporate social determinants more prominently in the framework
 - Map existing value-based programs to the framework
 - Identify successes and challenges of existing programs
 - Create recommendations for standardized quality measures
 - Glossary of terms



Next steps

- Coordinated Team-based Care Coalition of Wisconsin
 - Meet first Thursday of each month 9:00 a.m. – 11:00 a.m.
 - Medicaid health plans
 - Health systems and providers
 - Professional providing prevention, self-management and social determinant services
 - Health informatics
 - Quality measures



Coalition partners (as of 11/8/16)

- Ageless Life Solutions
- AIDS Resource Center of Wisconsin
- Aurora
- Children's Community Health Plan
- Children's Health Alliance of WI
- Children's Hospital of WI
- Family Health La Clinica
- Managed Health Services
- Milwaukee Fire Department
- Molina
- Pharmacy Society of WI
- Rural Health Initiative, Inc.
- Rural WI Health Cooperative
- Sixteenth Street Community Health Center
- United Healthcare
- United Way of Dane County
- Unity Health Insurance
- Wheaton Franciscan Healthcare
- WI Comprehensive Cancer Control Program
- WI Academy of Nutrition and Dietetics
- WALHDAB
- Wisconsin Coordinating Body of the American Association of Diabetes Educators
- WI Department of Public Instruction
- WI Division of Public Health
- WI Initiative to Promote Healthy Lifestyles
- WI Primary Health Care Association
- Wisconsin Medical Society
- WPHA

Member engagement

- Forms for members
- Legislative grid

Thank you
