



## Overview of the Department of Health Services (DHS) and Division of Public Health (DPH)

Angela Nimsgern, MPH, CPH  
Office of Policy and Practice Alignment  
Wisconsin Division of Public Health  
Wisconsin Department of Health Services

1

---

---

---

---

---

---

---

---

**List of State Agencies**

Search

[Text Only](#) | [Help](#) | [Site Map](#) | [Subject Directory](#) | [Agency Index](#) | [Feedback](#)

- Portal Home
- Government
- Public Services
- Business
- Education
- Wisconsin Facts
- Health & Safety
- Relocation
- Visiting

### Alphabetical Index of Wisconsin State Agencies

Whatever Wisconsin government agency, board, commission or department you are looking for, you'll find it right here in this handy alphabetical index.

[A-D](#) | [E-H](#) | [I-K](#) | [L-P](#) | [Q-T](#) | [U-Z](#)

<b>A-D</b>	<b>L-P</b>
Administration, Department of	Labor and Industry Review Commission
Aging and Long Term Care, Board on	Land Information Program
Agriculture, Trade and Consumer Protection, Department of	Lieutenant Governor, Office of the
Arts Board	Lower Wisconsin State Riverway Board
Children and Families, Department of - NEW	Military Affairs, Department of
Children's Trust Fund	Natural Resources, Department of
Commissioners of Public	Office of State Employment Relations
	Personnel Commission
	Privacy Protection, Office of
	Public Defender, Office of State

---

---

---

---

---

---

---

---



---

---

---

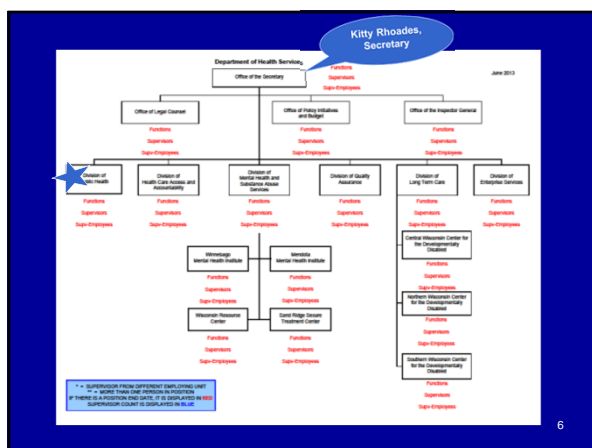
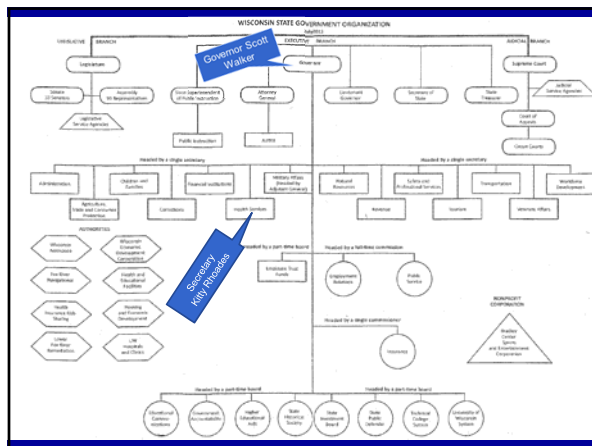
---

---

---

---

---



**“We are all in this together.”**

Kitty Rhoades, Secretary,  
Wisconsin Department of  
Health Services

7

---

---

---

---

---

---

---



**Wisconsin Department of  
Health Services**

**OUR MISSION**

To support economic prosperity and  
quality of life, the Department of Health  
Services exercises multiple roles in the  
protection and promotion of the health and  
safety of the people of Wisconsin.

DHS, 2013

8

---

---

---

---

---

---

---



**Wisconsin Department of  
Health Services**

**OUR STRATEGY**

The Department of Health Services has a vital  
mission that touches the lives of all Wisconsinites.  
Our collective path to success in meeting our  
mission lies in always acting true to our shared  
conviction.

DHS, 2013

9

---

---

---

---

---

---

---

## Guiding Principles

The following principles guide our actions as we collectively strive to fulfill our mission:

- **We** serve the citizens of Wisconsin by being effective stewards of the resources with which they have entrusted us.
- **We** recognize health care costs are not sustainable at current levels.
- **We** need new models for care delivery, regulation development, prevention strategies, risk sharing and purchasing.

10

---

---

---

---

---

---

---

---

## Guiding Principles

- **We** believe that competition, choice, and transparency are critical elements to these emerging models if we are to increase the value of health care to our citizens.
- **We** must, in this transition, enhance the role of our citizens as primary stakeholders in managing their health and associated costs.
- **We** will align resources to achieve positive outcomes and hold ourselves accountable for achieving results.

11

---

---

---

---

---

---

---

---

## Guiding Principles

- **We** will provide support systems to help vulnerable people lead fulfilling, self-directed, healthy lives that promote independence, while recognizing the value of and utilizing supports from families and the community.
- **We** will work to eliminate cost shifting to the private sector and among different systems (acute, mental health, long-term care). Public programs shall complement rather than compete against the private market.

12

---

---

---

---

---

---

---

---





## Wisconsin Division of Public Health Administrator



Karen McKeown, RN, MSN  
State Health Officer and Administrator  
Division of Public Health  
Department of Health Services

16

---

---

---

---

---

---

---

---



## Department of Health Services, Division of Public Health Regions



17

---

---

---

---

---

---

---

---



## DPH Bureau of Operations

- Operational & administrative support
  - Budget development, analysis, and monitoring
  - Communications and health information
  - Division Policies and Procedures
  - Grant processing and contracting
  - Web Content
  - Records Management



Donna Moore, Director  
Bureau of Operations

18

---

---

---

---

---

---

---

---



## DPH Office of Policy and Practice Alignment

- **Regional Assessment, policy Development, Assurance and Response (RADAR) Teams**
- **Primary Health Care Programs**
  - Primary Care Cooperative Agreement
  - Health Professional Shortage Areas (HPSA) designation
  - Federal National Health Service Corps (NHSC)
  - J-1 Visa Waiver programs
  - Health Care for the Homeless program
- **Policy Section**
  - State Health Plan (Healthiest Wisconsin 2020)
  - Public Health Workforce Development
  - Public Health Council
  - National Accreditation
  - Quality Improvement
  - Partnerships, coalitions, lead systematic planning
- **Minority Health Program**

VACANT, Director  
Office of Policy and Practice  
Alignment  
Division of Public Health

19

---

---

---

---

---

---

---

---



## RADAR Teams

### Core Functions

- Assure consistent and accountable public health services in local government
- Provide leadership in the development of public health system capacity
- Link the work of DHS and local, tribal, and state public health system partners (ambassadors).
- Monitor, analyze, plan and facilitate response to regional issues, conditions, events and emergencies.

### Examples

- Formal review of all local health departments
- Support *Community Health Assessments & Community Health Improvement Processes and Plans*
- Communicate DHS, DPH policies, initiatives, and priorities
- Coordinate with DPH Central Office on responses to emergencies/events

20

---

---

---

---

---

---

---

---



## DPH Regional Offices

Western Regional Office  
610 Gibson Street  
Suite 3  
Eau Claire, WI 54701  
Phone: 715-836-5362  
Fax: 715-836-6686



Tim Ringhand, Regional Director  
Division of Public Health  
Western Region

21

---

---

---

---

---

---

---

---



## DPH Regional Offices

Northern Regional Office  
2187 N. Stevens Street  
Suite #C  
Rhineland, WI 54501  
Phone: 715-365-2700  
FAX: 715-365-2705



Angela Nimsgern, Regional Director  
Northern Region  
Division of Public Health

22

---

---

---

---

---

---

---

---



## DPH Regional Offices

Northeast Regional Office  
200 N. Jefferson  
Suite 511  
Green Bay, WI 54301-5123  
Phone: 920-448-5223  
FAX: 920-448-5265



Chris Culotta, Regional Director  
Northeast Region  
Division of Public Health

23

---

---

---

---

---

---

---

---



## DPH Regional Offices

Southern Regional Office  
1 West Wilson Street  
Room 250  
Madison, WI 53703-3445  
Phone: 608-266-3500  
FAX: 608-266-9793



David Pluymers, Regional Director  
Southern Region  
Division of Public Health

24

---

---

---

---

---

---

---

---





## DPH Regional Offices

Southeast Regional Office  
819 N. 6th Street  
Room 609A  
Milwaukee, WI 53203  
Phone: 414-227-4860  
FAX: 414-227-2010



Georgia Cameron, Regional Director  
Southeast Region  
Division of Public Health

25

---

---

---

---

---

---

---

---



## DPH Bureau of Communicable Diseases and Emergency Response

- **Communicable Disease Epidemiology Section**

- Investigation and response
  - Tuberculosis, food/water/vector borne diseases, zoonotic diseases, suspected communicable disease outbreaks, and emerging and re-emerging diseases

- **AIDs/HIV Section**

- AIDS/HIV epidemic response
- Adult Hepatitis prevention and control

- **Immunization Section**

- Surveillance and investigation of vaccine preventable diseases
- Wisconsin Immunization Registry
- National Pharmaceutical Stockpile



Diane Christen  
Bureau Director

26

---

---

---

---

---

---

---

---



## DPH Bureau of Communicable Diseases and Emergency Response

- **Emergency Health Care and Preparedness Section**

- Supports state systems preparation for threats and emergencies
- Volunteer Registry (WEAVR, MRC)
- Pandemic Influenza
- Strategic National Stockpile
- Partner communication
- WI Train (e-learning management system)
- Statewide trauma care system
- Licensing, education, training, policy and practice issues related to emergency medical services
- Assure pre-hospital patient care standards are met

- **Sexually Transmitted Diseases Section**

- Prevention and control
- Direct patient services and partner referral
- Consultation and technical assistance



Diane Christen  
Bureau Director

27

---

---

---

---

---

---

---

---



## DPH Bureau of Communicable Diseases and Emergency Response



James Kazmierczak, DVM  
State Public Health Veterinarian  
Bureau of Communicable Diseases and Emergency Response  
Division of Public Health



James Vergeront, MD, Director  
HIV/AIDS Program  
Bureau of Communicable Diseases and Emergency Response  
Division of Public Health

28

---

---

---


---

---


---

---

---



## DPH Bureau of Communicable Diseases and Emergency Response



Jeffrey Davis, MD  
Chief Medical Officer  
Bureau of Communicable Diseases and Emergency Response  
Division of Public Health

29

---

---

---


---

---

---


---

---



## DPH Bureau of Community Health Promotion

- **Chronic Disease and Cancer Prevention Section**
  - Diabetes
  - Heart Disease and Stroke
  - Nutrition and Physical Activity
  - WWWP
  - Comprehensive Cancer Prevention
  - Oral Health
- **Family Health Section**
  - MCH/CYSHCN
  - Early Screening and Intervention Programs
  - Women's Health including Healthy Birth Outcomes
  - Injury and Violence Prevention
- **The Women, Infants, and Children (WIC) and Nutrition Section**
  - WIC Including Farmers' Market
  - Breastfeeding Peer Counseling
  - Emergency Food Assistance Programs
- **The Tobacco Prevention and Control Section**
  - Comprehensive Tobacco Prevention and Control Programs
  - FDA Tobacco Retail Inspections
  - Wisconsin Wins – reduce tobacco sales to minors



Susan Uttech, Director  
Bureau of Community Health Promotion  
Division of Public Health

30

---

---

---

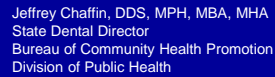
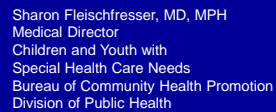
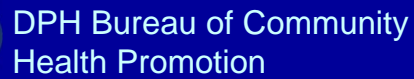
---

---

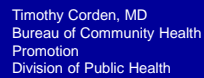
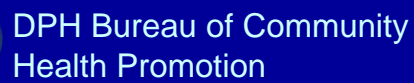
---

---

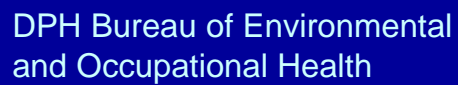
---



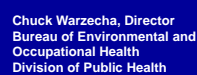
31

[illegible]

32

[illegible]

- **Health Hazard Evaluation Section**
  - Track environmental and occupational diseases/conditions
  - Assess uncontaminated hazardous waste sites
  - Technical support for
    - Indoor air quality
    - Asthma, other environmental issues
    - Researches and informs on health risks associated with sports fish consumption
  - Groundwater and ambient air quality standards
- **Lead and Asbestos Section**
  - Tracks adult and childhood lead poisoning
  - Policies and guidance on cases
  - Promotes prevention strategies
  - Maintain registry of lead-safe and lead-free properties
  - Certifies lead and asbestos workers



33

---


---

---

---


---

---



## DPH Bureau of Environmental and Occupational Health (cont.)

- Food Safety and Recreational Licensing Section**
  - Licenses restaurants, lodging facilities, swimming pools and spas, campgrounds, recreational/educational camps and body art practitioners and facilities
  - Registers environmental health professionals and certifies food managers
- The Radiation Protection Section**
  - Inspects and licenses X-ray devices and mammography facilities, radioactive materials and devices and tanning devices
  - Technical support regarding the control of indoor radon and provides environmental monitoring around Wisconsin's nuclear energy facilities
  - Maintains emergency response capability for energy or transportation incidents, or potential acts of terrorism involving radioactive materials



**Chuck Warzecha, Director**  
Bureau of Environmental and Occupational Health  
Division of Public Health

34

---

---

---


---

---


---

---

---



## DPH Bureau of Environmental and Occupational Health



**Henry Anderson, MD, Chief Medical Officer**  
Bureau of Environmental and Occupational Health  
Division of Public Health

35

---

---

---


---

---

---


---

---



## DPH Office of Health Informatics

- State Registrar/Vital Records Section**
  - Registers vital events – (e.g. births, deaths, marriages)
  - Train local vital records office personnel
  - Manages all WI vital records
- Health Analytics Section**
  - Maintains Wisconsin Cancer Reporting System (registry)
  - Maintains Wisconsin Violent Death Reporting System
  - Provide health care provider and health care services data
  - Demographic data and population estimates
  - Behavioral Risk Factor and Family Health Survey
  - Pregnancy Risk Assessment Monitoring System (PRAMS)
  - Analyze databases and reports
  - Web-based interactive query systems for local and statewide health information
  - Edit all office publications
  - Oversee Office Web sites, Health Statistics, Consumer Guide to Health Care



**Oskar Anderson, Director**  
Office of Health Informatics

36

---

---

---

---

---

---

---

---



## DPH Office of Health Informatics (cont.)

- **State Health Information Technology (HIT) Coordinator**
  - Develop health information exchange across the public and private sectors
  - Link HIT and health information exchange plans with prevention and disease management activities
- **Public Health Information Network (PHIN) Coordinator/Informatics Architecture Section**
  - Integrate public health information for quick retrieval
  - Disease detection and monitoring, data analysis, secure network communications, emergency alert and response, and knowledge management
- **Senior Epidemiologist**
  - Advance knowledge-sharing and management
  - Establish best practices for data collection management, analysis and dissemination
  - Promote Public Health Information Network



Oskar Anderson, Director  
Office of Health Informatics

37

---

---

---

---

---

---

---

---



## DPH Office of Health Informatics



Mark Wegner, MD, MPH  
Office of Health Informatics  
Division of Public Health

38

---

---

---

---

---

---

---

---



## Sources

- **List of State Agencies**  
[http://www.wisconsin.gov/state/core/agency\\_index.html](http://www.wisconsin.gov/state/core/agency_index.html)
- **Wisconsin Blue Book 2013-2014**  
<http://legis.wisconsin.gov/lrb/bb/11bb/>
- **Wisconsin Department of Health Services**  
<http://www.dhs.wisconsin.gov/>

39

---

---

---

---

---

---

---

---

Questions?

Time for a Challenge!

40

---

---

---

---

---

---

---