

DIVISION OF ECONOMIC SUPPORT

MISSION STATEMENT

The mission of the Division of Economic Support is to enable low-income and other eligible Wisconsin residents to achieve economic self-sufficiency, thereby improving their quality of life. We promote, provide and oversee a network of effective, efficient and equitable services. We recognize diversity and treat people with dignity and respect.

October 13, 1993

TN#: 94-008
Supersedes
TN#: 91-0015

Approval Date

1/6/94

Effective Date

1/1/94

STATE OF WISCONSIN

Description of Staff Making Eligibility Determination

The Division of Economic Support is responsible for a broad program of financial services for economically disadvantaged groups. While the Division of Health administers the Medical Assistance Program, the Division of Economic Support does the eligibility determination and supervises the counties' administration and application of eligibility criteria. The county staffs vary in their composition, but utilize uniform standardized forms to gather eligibility information and make eligibility determinations. Both the Division of Economic Support and the Division of Health are in the Department of Health and Social Services.

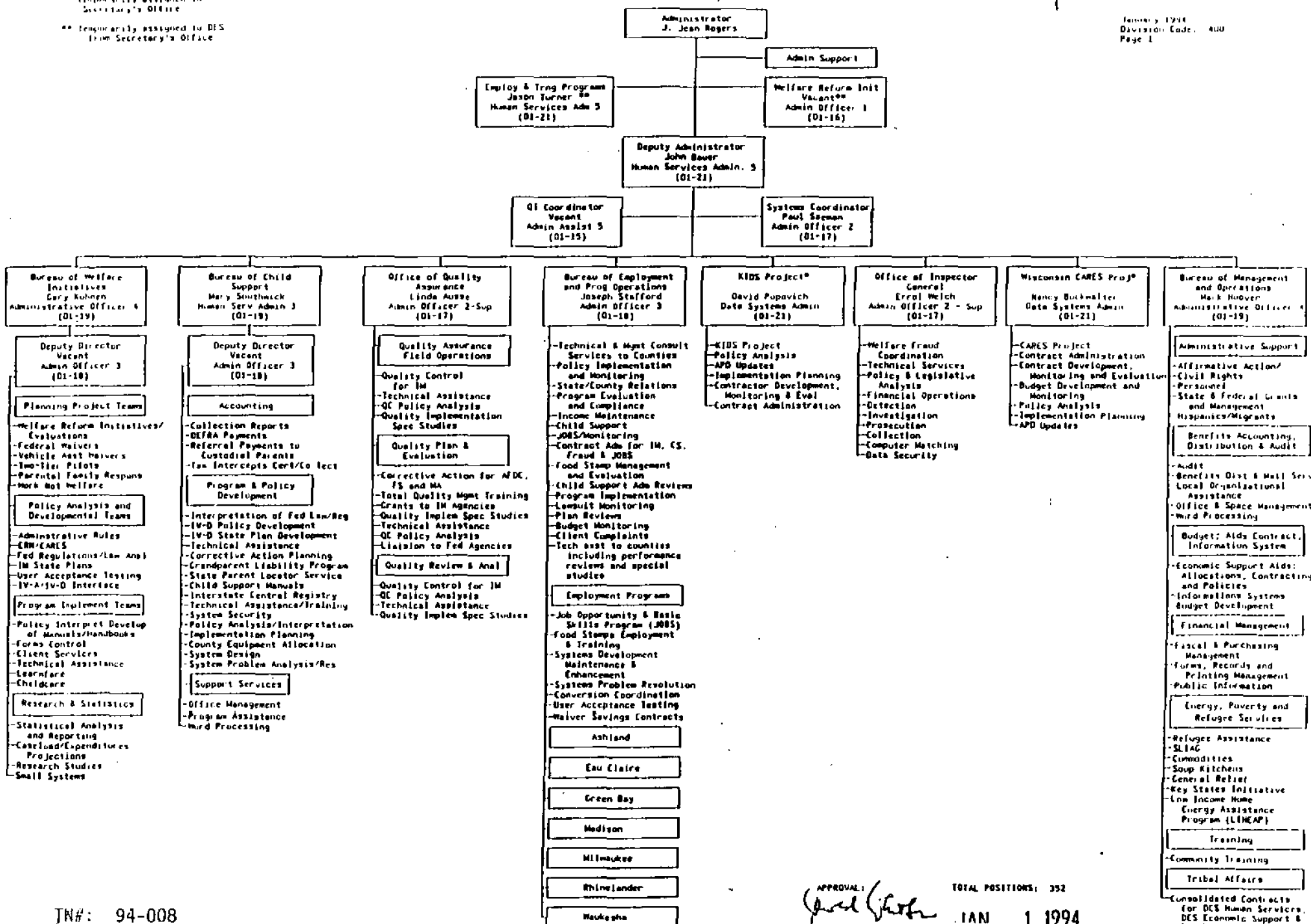
TN #94-008
Supersedes
TN #91-0015

Approval Date: 1/6/94

Effective Date: 1-1-94

DEVISION: ECONOMIC SUPPORT

* Temporarily assigned to Secretary's Office
** Temporarily assigned to DES from Secretary's Office

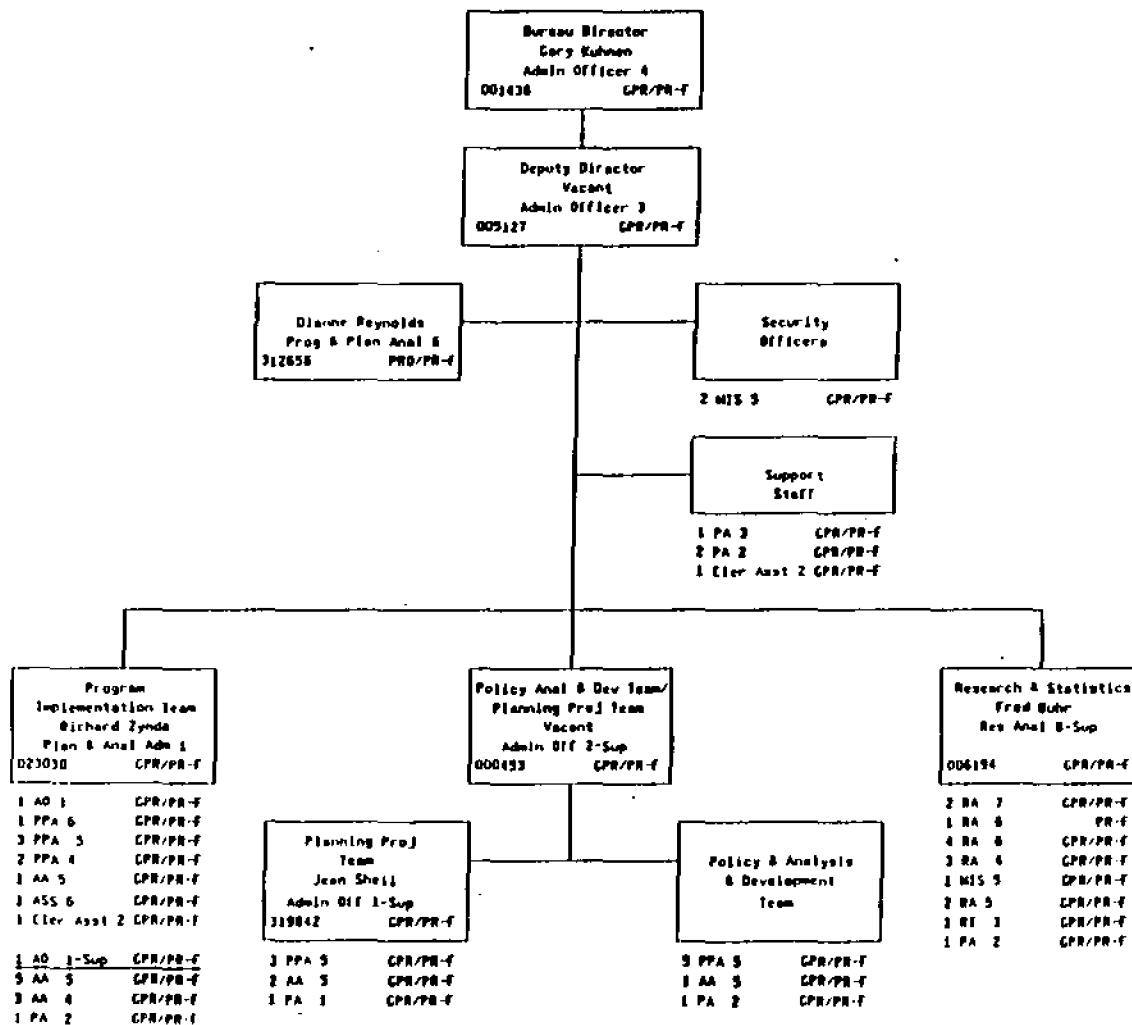


APPROVAL: *[Signature]* TOTAL POSITIONS: 352
IAN 1 1994
OFFICE OF THE SECRETARY DATE

TN#: 94-008
Supersedes
TN#: 91-0015

Approval Date 4/6/94 Effective Date 1/1/94

DIVISION OF ECONOMIC SUPPORT
BUREAU OF WELFARE INITIATIVES



APPROVAL:

[Signature]

OFFICE OF THE SECRETARY

TOTAL POSITIONS: 61

JAN 1 1994

DATE

TN#: 94-008
Supersedes
TN#: 91-0015

Approval Date 4/6/94 Effective Date 1/1/94