



All in for Kids

A Birth to 3 Program Family Newsletter

All in for Kids: Birth to 3 Program is a newsletter that helps keep you and your family informed about the Birth to 3 Program. The newsletter is published by the Wisconsin Department of Health Services (DHS).



How we know early intervention is working: Wisconsin's annual IDEA Part C review

Every year, the federal government checks in on how well each state is doing with early intervention services for infants and toddlers with developmental delays or disabilities. This review process helps make sure that children and families get the support they need to grow, learn, and thrive.

This process is called the federal Individuals with Disabilities Education Act (IDEA) Part C Determinations, and it's a big part of how we track what's working and what can be improved in the Birth to 3 Program.

The information provided in this newsletter is published in accordance with U.S. Department of Education, Individuals with Disabilities Education Act (IDEA), and Part C Regulations Early Intervention Program for Infants and Toddlers with Disabilities.

What is early intervention?

Early intervention is services and supports for children under the age of 3 who have developmental delays or disabilities. These services are designed to help children learn new skills and support families along the way. Early intervention uses licensed and qualified staff, and the goal is to help children get a strong start in life.

In Wisconsin, early intervention is provided through the Birth to 3 Program, and every county has a local program that serves children and families living in that area.

Who makes sure early intervention is working?

Each year, the federal government reviews how well every state is providing early intervention services under the IDEA Part C Determinations process.

During the review, the federal government looks at:

- How many children are in the program and how long they receive services
- Whether children are making progress in their development
- Whether timelines are met for things like creating individualized family service plans (IFSPs)

How is Wisconsin doing?

Wisconsin continues to provide high-quality early intervention services that meet federal standards. We're proud to share that Wisconsin's Birth to 3 Program "Meets Requirements" for the fifth year in a row.

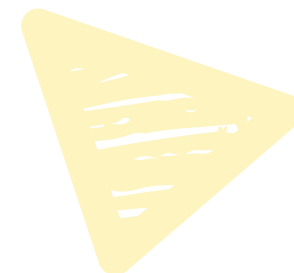
You can view Wisconsin's full results online on the Determinations Letters on State Implementation of IDEA webpage at sites.ed.gov/idea/idea-files/2023-determination-letters-on-state-implementation-of-idea/

How did my county do?

You can find your county's results on the Birth to 3 Program County Performance Data webpage at dhs.wi.gov/birthto3/reports/county.htm. You can also talk to your county Birth to 3 Program coordinator to learn more about your local program's performance.

What is an individualized family service plan (IFSP) and why is it important?

The IFSP is a document that has information about your team, your family, the outcomes (goals) that you set, and the services provided to help your child and family reach those outcomes. It is a roadmap to success. It's customized, includes what you think is important, and adapts as your child grows. It's a way to make sure your child gets to enjoy being a kid while learning and developing at their own pace, with you cheering them on every step of the way.



The information provided in this newsletter is published in accordance with U.S. Department of Education, Individuals with Disabilities Education Act (IDEA), and Part C Regulations Early Intervention Program for Infants and Toddlers with Disabilities.

How you can support early intervention

There are many ways families can support early intervention in Wisconsin:

- Join an Interagency Coordinating Council (ICC) meeting to learn more about what's happening across the state. Your voice matters!
 - Visit dhs.wi.gov/b3icc/index.htm for more information.
- Advocate for early childhood services by sharing your story with local leaders, businesses, or lawmakers who support children and families. ❖

Family spotlight: Cal's journey in the Birth to 3 Program

Every child's journey in the Birth to 3 Program is unique and full of important milestones. For Cal and his family, early intervention started just weeks after he was born. Diagnosed with a genetic condition before birth, Cal was connected with the Portage County Birth to 3 Program at just 12 weeks old. Since then, he's made incredible progress with the support of his family and his early intervention team.

A strong start with tummy time

Cal's early goals focused on simple but important steps like learning to tolerate tummy time. With the help of his physical therapist, Brittany, and lots of encouragement from his family, Cal started building the strength and coordination he needed.

Now? He's riding a strider bike. "The progress he's made over the years has been incredible," shared his mom, Heather.

Growing stronger every day

Cal's time in the Birth to 3 Program has been filled with care, consistency, and teamwork. Heather credits much of Cal's success to the relationship they built with Brittany and the rest of their early intervention team.



The information provided in this newsletter is published in accordance with U.S. Department of Education, Individuals with Disabilities Education Act (IDEA), and Part C Regulations Early Intervention Program for Infants and Toddlers with Disabilities.

Ready for what's next

Cal is turning three years old this September, which means he will graduate from the Birth to 3 Program. As he transitions to outpatient speech therapy, his family is grateful to have support during this next step.

"We're just so thankful to have our Birth to 3 team with us to help us transition," Heather said. ❖

The Birth to 3 Program wants your family stories and photos!

The All in for Kids newsletter is for families. We want to feature your photos and experiences for other readers to enjoy! You can share things like:

- A positive interaction with the Birth to 3 Program.
- An example of how the Birth to 3 Program has helped your family or child.
- A photo or story of an activity you did with your child.
- A photo of artwork or something else your child has made.

Email your family story or photo to dhsbirthto3@dhs.wisconsin.gov with "All in for Kids" in the subject line. You can also send ideas for stories you would like to see in the newsletter. We look forward to hearing from you! ❖



The information provided in this newsletter is published in accordance with U.S. Department of Education, Individuals with Disabilities Education Act (IDEA), and Part C Regulations Early Intervention Program for Infants and Toddlers with Disabilities.

Understanding the annual parental cost share in the Birth to 3 Program

When your child joins the Wisconsin Birth to 3 Program, your family may be asked to contribute to the cost of services each year through something called parental cost share. This helps to fund the program.

What is the Annual Parental Cost Share?

The annual parental cost share is the amount a family may pay each year toward the early intervention services their child receives. These services are outlined in your child's Individualized Family Service Plan (IFSP) and can include things like education, speech, physical, or occupational therapy.

How is it calculated?

Your county's Birth to 3 Program will ask for information to help determine your family's cost share. Your cost share is determined based on:

- **Gross annual income** (before taxes)
- Number of people in your household
- Number of children in the Birth to 3 Program
- Number of children in your household under age 19 who have a disability

The final amount is determined using a table provided by DHS: dhs.wi.gov/publications/p01757.pdf.

Whose income is included?

Only the income of biological or adoptive parents who are legally responsible for your child is used. If your child lives in a shared custody or 50/50 placement, both households may be included in the calculation. Income from other adults in the home who are not legal guardians is not used.

What if our financial situation changes?

Your cost share amount is based on your current IFSP and is reviewed once a year. However, if your income changes significantly, or if your

WHAT IS Gross Annual Income?

Gross annual income is the total income earned in a year before any deductions are taken out like taxes, Social Security contributions, or contributions for other employment benefits.

The information provided in this newsletter is published in accordance with U.S. Department of Education, Individuals with Disabilities Education Act (IDEA), and Part C Regulations Early Intervention Program for Infants and Toddlers with Disabilities.

family grows or changes (such as the birth of a new child), your cost share may be adjusted.

If you're concerned about being able to pay, talk to your service coordinator. You can request:

- A new review of your cost share
- A reduction or waiver
- A delay or extension of payments

Even if your family needs to delay or reduce payments, your child will keep getting services as long as you continue participating in the program.

Do all families pay?

No. Some families may not have a cost share based on their income or family size. The Birth to 3 Program will also not collect a cost share if a child is in Foster Care, Kinship Care, or enrolled in other programs like the Children's Long-Term Support (CLTS) Program.

How is the payment handled?

Your service coordinator will talk with you about your options and help set up a payment plan that works for your family. Each county may manage payments differently, so the exact process may vary.

Want to learn more?

Your service coordinator is the best person to help you understand how parental cost share works in your county.

You can also view more information here:

- Parental Cost Share Fact Sheet, P-23165A: dhs.wi.gov/publications/p2/p23165a.pdf
- Income and Family Size Worksheet, F-22550: dhs.wi.gov/forms1/f2/f22550.pdf ❖

The information provided in this newsletter is published in accordance with U.S. Department of Education, Individuals with Disabilities Education Act (IDEA), and Part C Regulations Early Intervention Program for Infants and Toddlers with Disabilities.

Partner highlight: Wisconsin FACETS

Partner Highlight is a recurring feature in our newsletter, putting a spotlight on some of the organizations that families might want to know more about.

Wisconsin FACETS (WI FACETS) is a nonprofit organization that offers free support and training to families of children with disabilities or suspected disabilities, from birth all the way through age 26. As Wisconsin's Parent Training and Information Center, WI FACETS helps families understand their rights and feel more confident as they support their child's learning and development.

Through one-on-one phone support, online and printed resources, and live and recorded webinars, WI FACETS is here to answer your questions and connect you with the tools you need.

How WI FACETS supports families in the Birth to 3 Program

If your child is receiving early intervention services through the Birth to 3 Program, WI FACETS can help you:

- Get ready for the transition from the Birth to 3 Program into preschool services (often called the IEP process).
- Understand your family's rights under early intervention services.
- Participate confidently in your child's Individualized Family Service Plan (IFSP).
- Prepare for meetings and know what questions to ask.
- Learn about the referral process, evaluations, and services available.
- Free live and recorded trainings on early intervention topics and statewide phone support.

The information provided in this newsletter is published in accordance with U.S. Department of Education, Individuals with Disabilities Education Act (IDEA), and Part C Regulations Early Intervention Program for Infants and Toddlers with Disabilities.

WI FACETS offers this support in both English and Spanish, and interpretation is available in many other languages. Their resources and training sessions are designed to be easy to understand, inclusive, and focused on your family's needs.

A real example of WI FACETS' help

"A parent contacted WI FACETS about their child's speech delays. We helped them understand the Birth to 3 Program referral and evaluation process and gave them helpful tips to prepare for the eligibility meeting. We also provided information about transitioning out of the program when their child turns three. The parent told us they felt more prepared and ready to speak up for their child's needs."

Families play a big role in a child's early success. WI FACETS is here to make sure you have the tools, knowledge, and confidence to be an active part of your child's journey from the very beginning. ❖

Helpful resources for families

Wisconsin Governor Tony Evers Declared 2025 the Year of the Kid and signed a bipartisan pro-kid budget: "This is a win for Wisconsin's kids, families, and communities." The 2025-27 budget does what's best for kids and working families by lowering out-of-pocket costs for child care and more.

View the press release here: content.govdelivery.com/accounts/WIGOV/bulletins/3e7d45c

Learn more about the Birth to 3 Program

The First 1,000 Days brochure gives an overview of the program dhs.wi.gov/library/collection/p-02928.



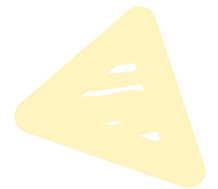
The Birth to 3 Program Services at a Glance guide explains the supports and services available: dhs.wi.gov/library/collection/p-03011.



Need help or have questions?

Call WI FACETS at 877-374-0511 to speak with a Help Desk Specialist.

Visit wifacets.org to view upcoming trainings, family-friendly resources, and webinars.



The information provided in this newsletter is published in accordance with U.S. Department of Education, Individuals with Disabilities Education Act (IDEA), and Part C Regulations Early Intervention Program for Infants and Toddlers with Disabilities.

The Early Intervention Services for Infants and Toddlers with Delays and Disabilities in Wisconsin booklet helps you understand how early intervention helps your family and child learn and grow together: dhs.wi.gov/library/collection/p-03022.



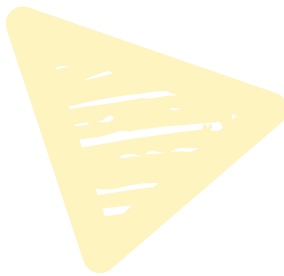
Previous issues of the All in for Kids newsletter: Birth to 3 Program are available online: dhs.wi.gov/library/collection/akidsb-3-2025. ❖



JOIN OUR EMAIL LIST

For faster delivery, sign up to get the electronic version of this newsletter and other emails about the Birth to 3 Program. Go to dhs.wi.gov/aboutdhs/alerts.htm and scroll down and click the Birth to 3 Program Information for Families link.

Don't forget to tell your family and friends in the Birth to 3 Program to sign up as well!



The information provided in this newsletter is published in accordance with U.S. Department of Education, Individuals with Disabilities Education Act (IDEA), and Part C Regulations Early Intervention Program for Infants and Toddlers with Disabilities.



All in for Kids: Birth to 3 Program is a newsletter published by the Wisconsin Department of Health Services for children and families in the Wisconsin Birth to 3 Program.

The Wisconsin Birth to 3 Program is an early intervention program committed to serving children under the age of 3 with developmental delays and disabilities and their families. The program partners with families to assist the child's development and support the family's knowledge, skills, and abilities as they interact with and raise their child. For more information, visit dhs.wi.gov/children/index.htm.

Para leer este boletín en español, visite dhs.wi.gov/library/collection/akidsb-3-2025.

Xav nyeem tsab ntawv xov xwm no ua Lus Hmoob, mus xyuas dhs.wi.gov/library/collection/akidsb-3-2025.

For other languages (繁體中文, 简体中文, Deutsch, العربية, русский, 한국어, Tiếng Việt, Deutsch, සමාජ, Français, Polski, हिंदी, Shqip, Tagalog, Soomaali): 608-266-5508.