

THE TRACKING TIMES

NEW DATA AVAILABLE

Our data portal had data improvement and functional updates!

We have been in a year of transition as we moved our data topics from our old portal to the [new portal](#) (launched last November). We are happy to report all Environmental Public Health Tracking data topics are now in one spot!

While our epidemiologists were moving the data to their new home, they also took that opportunity to bring in the **most recent data available, as well as new heat-related data**. In addition to the data improvements, the portal had some functional updates, such as:

- **Improved bookmarking.** The bookmark feature links to the exact query selected so you can show your work pals exactly what you're looking at.
- **Improved querying.** We merged two filters so you now pick the year of data and the type of data in the same spot. We also made the most recent year of data the default view.

We rely on your feedback to help us make future improvements, so don't be shy! [Take the portal for a spin](#) and [let us know what you think](#). We have more updates in the works, so be sure to skim this quarterly newsletter to get the latest portal news.



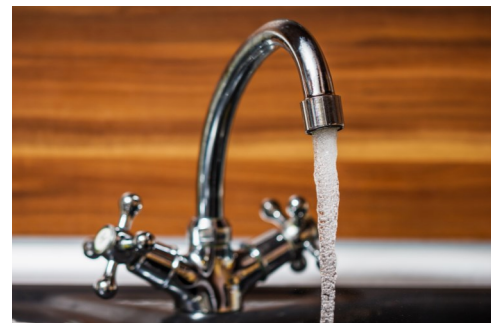
TRACKING IN ACTION

In each newsletter, we share a Tracking success story.

A New Sampling Strategy: Using Partnerships to Improve Well Water Testing in Eau Claire County, Wisconsin

After reviewing their [County Environmental Health Profile](#), Eau Claire City-County Health Department staff learned their average amount of nitrate in private wells was nearly 1.7 times higher than the Wisconsin average and higher than the state's Preventive Action Limit.

To learn more and improve well testing rates, they decided to apply for a Taking Action with Data grant through the Wisconsin Environmental Public Health Tracking Program. [Read more...](#)



How can we use existing relationships to improve well water testing?

NEW MINI-GRANTEES ANNOUNCED

We have a new round of mini-grantees doing great work throughout Wisconsin

The Tracking team is excited to announce seven new grantees in our *Taking Action with Data* grant program!

Applicants used Tracking data and resources to demonstrate need for a particular environmental public health issue in their community. Each grantee was awarded about \$10,000 and will be working on their projects until July 31, 2017.

Check out our [grantee contact map](#) to view each of the applicants. Contact information for each grantee is included should you want to collaborate.

The graphic features a map of Wisconsin with seven counties highlighted in blue. Each highlighted county is linked to a text box containing the grantee's name, project title, and contact information. The counties and their details are: Burnett County (Education and Asbestos Testing, Sherry Fay, fay@burnettcounty.org), Door County (Be Sun Safe in Door County, Rhonda Kolberg, kolberg@co.door.wi.us), North Shore (Asking the Questions: A Program to Reduce Childhood Lead Poisoning, Ann Christiansen, achrista@villageofshorewood.org), City of Milwaukee (Smile-Free Homes for Strong Babies, Jessica Deblin, jdeblin@milwaukee.gov), Walworth County (Preventing Adverse Childhood Experiences through Early Intervention for Children at Risk of Lead Poisoning, Erica Bergstrom, ebergstrom@co.walworth.wi.us), Rock County (Implementing a Web-Based Nitrate Risk Tracking Tool, Timothy C. Barwell, tbarwell@co.rock.wi.us), and Monroe County (Summer Sun Safety Program, Kaleigh Day, kday@co.monroe.wi.us). At the top right, it says 'TAKING ACTION WITH DATA | 2016-2017 GRANTEE CONTACTS'. At the bottom, it includes the Wisconsin Environmental Public Health Tracking Program logo and contact information: Bureau of Environmental and Occupational Health, dhs.wisconsin.gov/epht | AUGUST 2016 | dstracking@wi.gov, Department of Health Services | Division of Public Health | P 608.223.16 08/2016.

[View the grantee map and community contacts](#)

YOUR TRACKING TOOLBOX

In each newsletter, we share environmental health articles and resources.

New Childhood Lead Poisoning Prevention Resources

On the Wisconsin Childhood Lead Poisoning Prevention Program's [outreach page](#) you'll find educational resources like bookmarks, toolkits, PowerPoint templates, and simple messaging. There's no need to be a lead poisoning expert; they have everything you need to get up to speed and prevent lead poisoning!

Our Success Story Library is Growing!

We include a success story in every newsletter, but did you know you can find all of our past stories on our webpage? We are constantly adding in new stories from across Wisconsin about how folks are using Tracking data and resources to make a difference in their communities. Simply [visit our resources page](#) and click the "Success Stories" tab.



Happy, health, and lead-free!

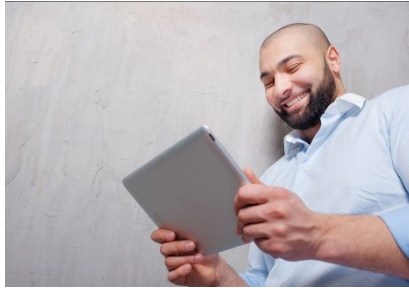
CONTINUED ON NEXT PAGE



STOP BY AND SEE US SOMETIME

We'd love to talk in person.

Check out our [calendar of events](#), stop by, and say hello!



DROP US A LINE ANYTIME

Have questions about Tracking? Unsure how to use your data? Want to share a success story? Got feedback?

[We want to hear from you!](#)



JOIN THE CONVERSATION

Interested in Wisconsin environmental public health? Connect and share with public health colleagues by

[joining the envhealth listserv.](#)



Environmental Public Health Tracking | Wisconsin Department of Health Services | Bureau of Environmental and Occupational Health | 1 West Wilson | Madison, WI | 53703