

THE TRACKING TIMES

"WE TRACK THAT" WEEK A SUCCESS

First annual National Environmental Public Health Tracking Program Week held July 11-15

On July 11-15 we celebrated the first ever National Environmental Public Health Tracking Program Week. "We Track That" was the theme for the week and highlighted the work done by Tracking programs across the U.S.

To celebrate the week, Wisconsin Tracking shared social media templates, tools, and [resources](#) to the [envhealth listserv](#). Thanks for helping us make Tracking week a success, and we look forward to celebrating again with you in 2017!



TRACKING IN ACTION

In each newsletter, we share a Tracking success story.

Part of the Plan: Inclusion of Tracking Data in Statewide Cancer Control Plan

Radon is the number one cause of lung cancer among non-smokers, but many people are unaware that radon is linked to lung cancer. The Wisconsin Comprehensive Cancer Control Plan (WI CCC Plan), which is Wisconsin's framework for action in cancer prevention and control, had not previously included decreasing exposure to radon among its priorities.

This success story details how Tracking Program data provided a baseline for radon data in Wisconsin. [Read more...](#)



How can Tracking data be used in strategic health plans?

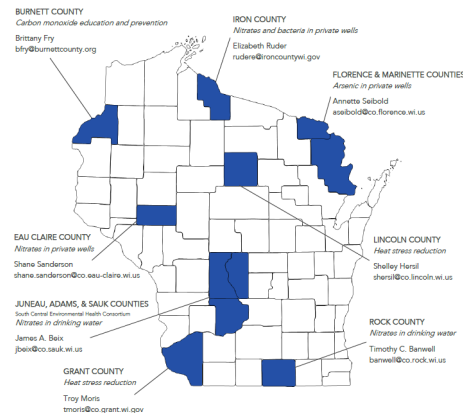
CONTINUED ON NEXT PAGE

MINI-GRANT SPOTLIGHT

Learn more about the environmental public health projects we are funding throughout Wisconsin. Heating up this month: projects on heat stress and water quality!

Eau Claire County

The average nitrate concentration in Eau Claire County well water tests is higher than the Wisconsin average. To address this difference, Eau Claire City-County Health Department staff and their partners provided free nitrate tests to targeted homeowners and followed up to discuss results. Staff also convened stakeholders to develop messaging about nitrate testing. "This project not only provides groundwater quality information for well owners, but increases community awareness of the need for nitrate testing and importance of safe drinking water," said Audrey Boerner, Project Manager.



[View the grantee map and community contacts](#)

Grant County

Grant County has double the rate of heat-related injuries compared to Wisconsin as a whole. Grant County Health Department staff worked with new partners to create outreach packets which promote cooling centers and their new fan donation program. Troy Moris, project coordinator said, "Because of the project, we have learned more details regarding the demographics of affected individuals; they are different than we thought and now we can better focus our resources on the individuals most at risk to protect the health of our residents."

Lincoln County

Heat-related injury in Lincoln County is higher than the Wisconsin average and no workgroup to address heat stress existed in the county. Lincoln County Health Department staff convened community partners to develop a sustainable interagency communication plan for environmental health issues with an emphasis on heat stress. "With the grant, we were able to increase knowledge of heat stress and strategies to prevent heat-related illness among 91% of targeted residents," said September Murphy, Environmental Health Technician.

CONTINUED ON NEXT PAGE

YOUR TRACKING TOOLBOX

In each newsletter, we share environmental health articles and resources.

Lyme Disease on the Rise in Wisconsin

In collaboration with the Vectorborne Disease Program, the Tracking team recently released a surveillance brief titled, [Lyme Disease Trends in Wisconsin](#). The brief covers trends, surveillance efforts, and prevention strategies.



Our most recent brief explores Lyme disease in Wisconsin. Have an idea for a future brief? [Let's talk!](#)

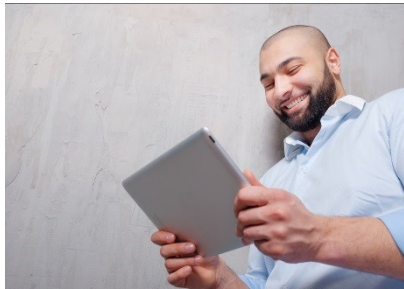
Communicating Environmental Health

Environmental health is a complicated topic. How can we do better to explain what environmental health is and why the work we do is important? [The Frameworks Institute](#) has extensively studied this question and put together several helpful resources, including [Building Understanding of Environmental Health: A Communications Toolkit](#).



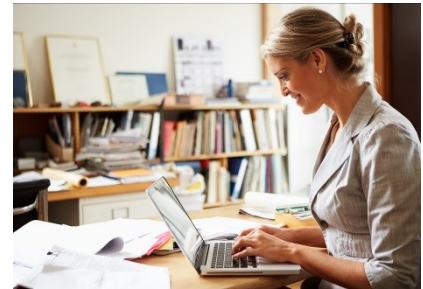
STOP BY AND SEE US
SOMETIME

We'd love to talk in person.
Check out our [calendar of events](#), stop by, and say hello!



DROP US A LINE
ANYTIME

Have questions about Tracking? Unsure how to use your data? Want to share a success story? Got feedback? [We want to hear from you!](#)



JOIN THE
CONVERSATION

Interested in Wisconsin environmental public health? Connect and share with public health colleagues by [joining the envhealth listserv](#).

