



WISCONSIN DEPARTMENT  
*of* HEALTH SERVICES

# Public Provider Meeting Nursing Home Payment Rates

Public Meeting  
(Zoom only)  
August 7, 2025  
3 p.m.–4 p.m.

# Presenters

- Grant Cummings, DHS, BRS Director
- Elizabeth Doyle, DHS, BRS Deputy Director
- Nathaniel Staley, DHS, BRS Nursing Home Section Manager
- Beth Collier Vail, Myers and Stauffer
- Seth Adamson and Scott Campbell, Optumas

# Agenda

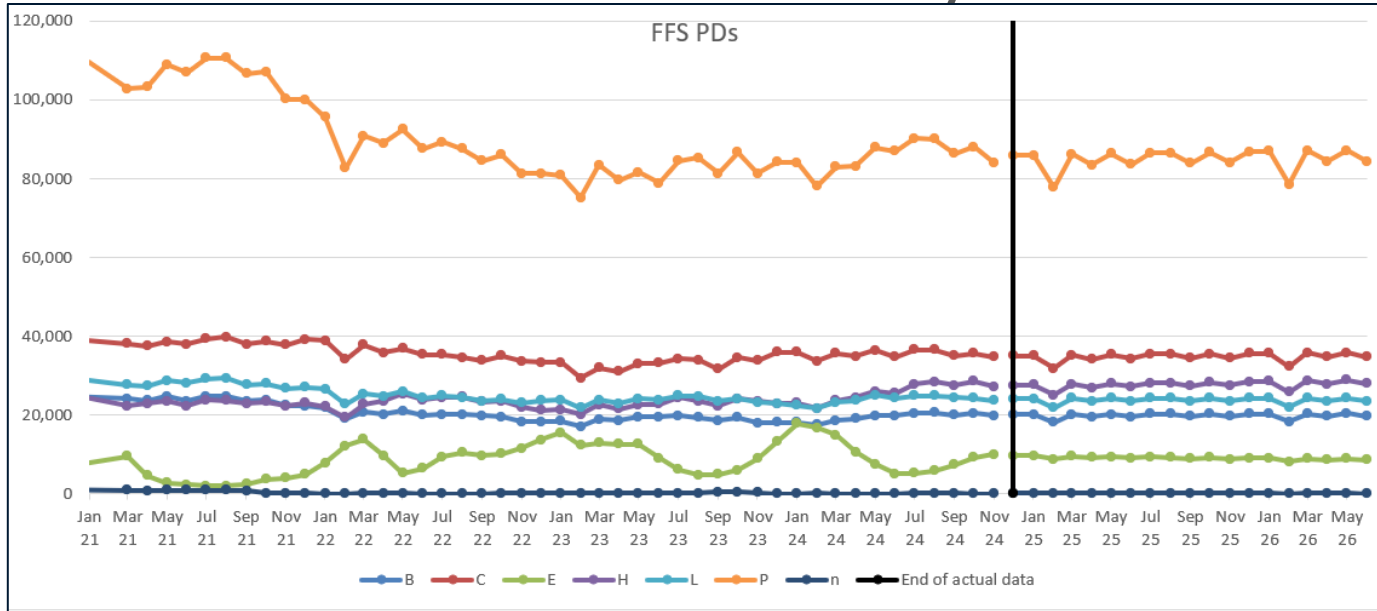
- Welcome – staffing updates
- Modeling and SFY26 base rates
- SFY26 methods changes
- General updates
- Next steps
- Open discussion/questions

# Welcome – staffing updates

- Jacob Dominy, Health Care Rate Analyst
- Elizabeth Doyle, BRS Deputy Director

# Modeling and SFY26 base rates

# FFS Patient Days

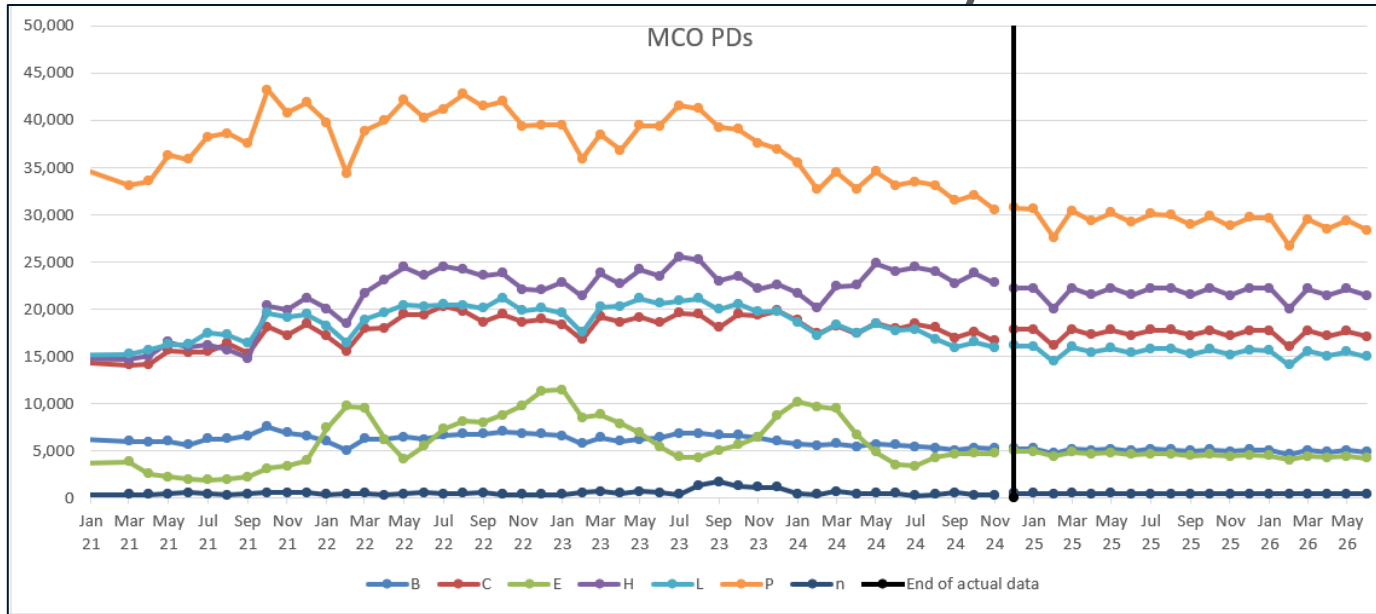


## Acuity Group Key

n not defined (delinquent days, assessment not PDPM-able, etc.)  
 B Behavior/Cognitive Impairment  
 C Clinically Complex

E Extensive Services  
 H High Special Care  
 L Low Special Care  
 P Reduced Physical Function

# MCO Patient Days

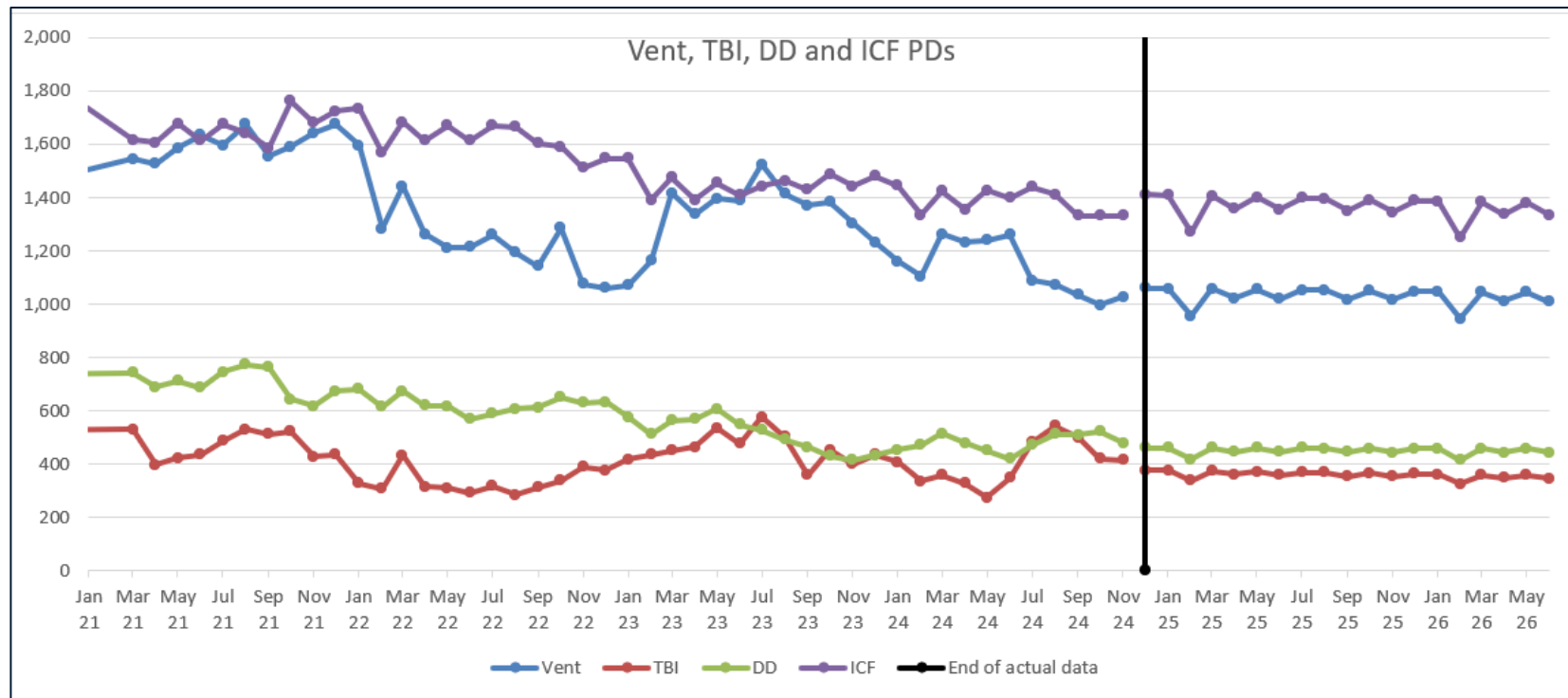


## Acuity Group Key

n not defined (delinquent days, assessment not PDPM-able, etc.)  
 B Behavior/Cognitive Impairment  
 C Clinically Complex

E Extensive Services  
 H High Special Care  
 L Low Special Care  
 P Reduced Physical Function

# Vent, TBI, DD and ICF-IID Patient Days





# Patient Days

Patient Days			
	SFY 2024 (Actual)	SFY 2025 (Projected)	SFY 2026 (Projected)
FFS NonDD	2,338,021	2,410,645	2,414,344
MCO	1,333,928	1,164,267	1,123,906
DD	5,560	5,654	5,408
ICF	17,134	16,463	16,341
Vent	15,495	12,449	12,347
TBI	4,784	4,921	4,277

# Acuity Modelling

## Case Mix Index

### PDPM Nursing

#### SFY 2024 Actual

*Parity Adjustment*  
10/1/2023  
2.74%

FFS	1.4202	1.3813
MCO	1.5597	1.5170

#### SFY 2025 Projections

*Parity Adjustment*  
10/1/2023  
2.74%

1.4171	1.3783
1.5513	1.5088

#### SFY 2026 Projections

*Parity Adjustment*  
10/1/2023  
2.74%

1.4212	1.3823
1.5529	1.5104

### PDPM NTA

#### SFY 2024 Actual

*Parity Adjustment*  
10/1/2023  
2.47%

FFS	1.0492	1.0233
MCO	1.1854	1.1561

#### SFY 2025 Projections

*Parity Adjustment*  
10/1/2023  
2.47%

1.0512	1.0252
1.1861	1.1568

#### SFY 2026 Projections

*Parity Adjustment*  
10/1/2023  
2.47%

1.0526	1.0266
1.1875	1.1582

# SFY26 Direct Care Base Rates

- Direct Care Nursing payment standard:
  - Median of costs + 25%.
- Calculated from initial cost report submissions.
  - Median: \$124.02
  - +25%: \$155.03 (2.0% increase from SFY25)

# Support Services

- Support Services payment standard:
  - Median of costs + 25%.
- Calculated from initial cost report submissions.
  - Median: \$154.76
  - +25%: \$193.45 (13.0% increase from SFY25)

# Property

- DHS has contracted an appraiser for 2025-2028 who is conducting updates and on-site appraisals.
- For the interim rates, in lieu of the appraisal data, URC and DRC were inflated forward by 8.7%
- Per-bed max also inflated 8.7%
  - SFY26: \$119,872
- For final rates, appraisal data will be used.

# SFY26 other rates

- TBI: \$1,032.18
  - Increase of 2.5% from SFY25
- VENT: \$972.88
  - Increase of 2.5% from SFY25
- SPRS: \$25.49
  - Increase of 2.5% from SFY25

# Vent CMI

- Historically, the case-mix weight used for ventilator days when calculating the all-res CMI was 5.0 (4.73 after parity adjustments)
- DHS has adjusted this case-mix weight down to 3.84, equal to the CMI category most commonly used for vent residents
- Vent days are priced at \$972.88, so this does not affect vent reimbursement
- What this does is affect how the all-res CMI for facilities with vent days is calculated, effectively increasing their DCN reimbursement

# Inflation factors

	January February March 2024	April May June 2024	July August September 2024	October November December 2024
Direct Care Wages	6.1%	5.5%	3.6%	2.5%
Direct Care Fringe Benefits	6.8%	7.9%	3.7%	2.8%
Direct Care Supplies/OTC Drugs	4.4%	3.2%	2.9%	2.9%
Direct Care Purchased Services	6.4%	5.1%	4.3%	3.6%
Support Services	6.4%	6.2%	4.6%	3.7%



# General Updates

- Reminder: independent financial audits for 2024 fiscal years were due to DHS by June 25, 2025 for entities with non-calendar year ends.
  - Calendar year end entities' financial audits are due Aug. 31, 2025
  - Entities that are part of a county financial audit have a due date of Sept. 30, 2025
- Extensions to the above deadlines may be requested in accordance with s. 9.11 of the Methods
  - For entities not yet contracted with a CPA for the audit, DHS will grant extensions upon request until Sept. 30, 2025 to execute a contract and send it to DHS
  - DHS will require the CPA to provide DHS with a timeline to complete the audit by Dec. 31, 2025
- Non-compliance with the financial audit requirement will result in reduced rates according to the schedule in s. 1.30 of the Methods

# General Updates Continued

- Completeness checks have been performed for all submitted cost reports
- NHs that have been selected for a full DHS audit have had their desk reviews completed
- Audits for many facilities have already been completed
  - Initial rates will be issued as soon as a rate program has been finalized
  - There are no changes to the rate finalization process from last year for NHs receiving a full DHS audit

# Next Steps

- Interim rates are being calculated for SFY26
  - Once interim rates are finalized, a directive will be sent to Gainwell which will likely take two weeks to process
  - NHs will be notified of their interim rates, and will also be able to go to the Myers and Stauffer website to view them
  - MCOs will be directed to use these rates for DOS 7/1/25 onward
- The rate finalization process for NHs not receiving a full DHS audit is being determined, and DHS will communicate out details soon
  - Expect the process to be similar to the current rate finalization process, with a briefer review period

# Questions?

# Thank you

- Gov-D sign-up:
  - [https://public.govdelivery.com/accounts/WIDHS/subscriber/new?topic\\_id=WIDHS\\_49](https://public.govdelivery.com/accounts/WIDHS/subscriber/new?topic_id=WIDHS_49)
- Please send questions/comments to [DHSDMSBRS@dhs.Wisconsin.gov](mailto:DHSDMSBRS@dhs.Wisconsin.gov)