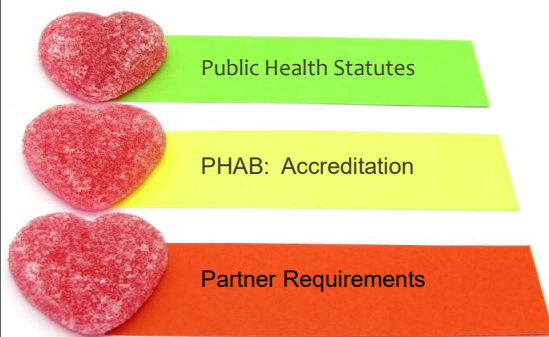


Benefits

- Improve health
- Reduce costs
- Build infrastructure
- Increase effectiveness
- Reduce duplication of efforts
- Increase community engagement & awareness



CHIPP Requirements



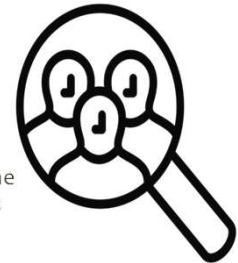
Public Health Statute

Regularly and systematically

- collect
- assemble
- analyze and
- make available

information on the health of the community, including statistics on

- health status
- community health needs and
- epidemiologic and other studies of health problems.

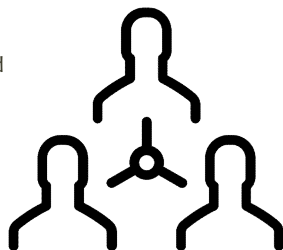


Icon created by Yu Luck from Noun Project

Public Health Statute

Involve

- key policymakers and
 - the general public
- in
- determining and
 - developing
- a community health improvement plan.



Icon created by Gregor Cresnar from Noun Project

PHAB Standards



1.1: Participate in or lead a collaborative process resulting in a comprehensive Community Health Assessment [CHA]

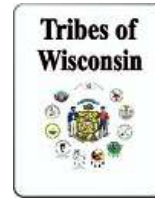
5.2: Conduct a comprehensive planning process resulting in a Community Health Improvement Plan [CHIP]

Partner Requirements: Hospitals



- Affordable Care Act: Non-Profit Hospitals
- Community Health Needs Assessment (CHNA) & Implementation Strategy
- Every three years

Other partners have guidelines too...



Most popular CHIP models in WI

County Health Rankings & Roadmaps **57%**

Building a Culture of Health, County by County

A Robert Wood Johnson Foundation program

CHIP Infrastructure Improvement Project



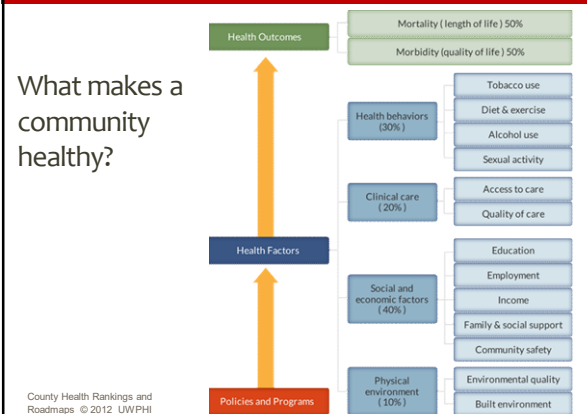
www.WICommunityHealth.org
Resources for Improving
Community Health

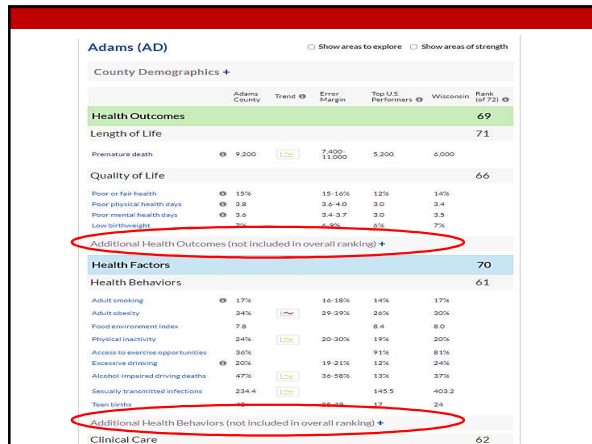
Home About Education & Events Models & Standards Resources by Stage



Step-by-step
guide to
CHIP with
checklists and
links to tools
and templates

What makes a
community
healthy?





Pick Lists of Evidence-Based Strategies

By (date), ## community members will be trained to recognize the signs of depression and suicide and refer people to resources.

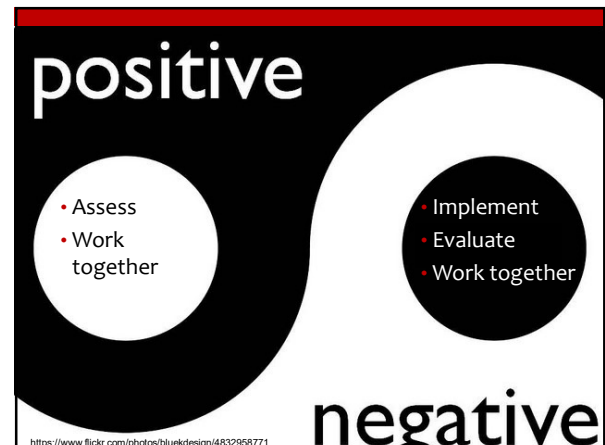
Description: Gatekeeper programs, such as Question, Persuade and Refer (QPR) for Suicide Prevention, train community members to recognize signs of depression and suicide and refer to resources.

Evidence Base: The National Prevention Strategy includes a recommendation for communities to implement efforts including gatekeeper programs to help identify people at risk for suicide and to refer to services.

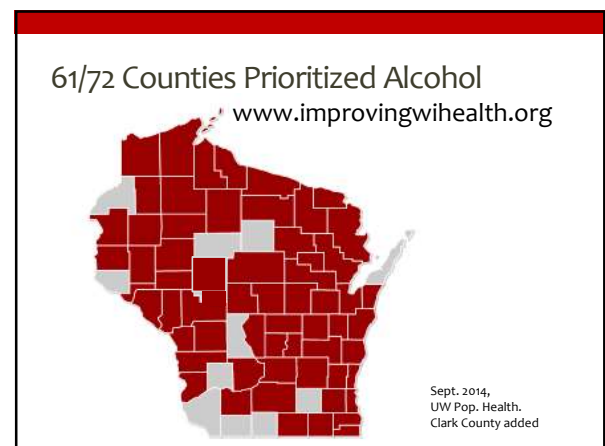
Implementation Tools: QPR Institute: www.QPRinstitute.com

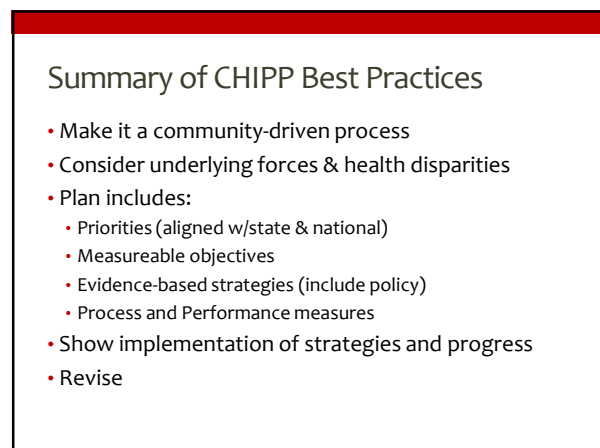
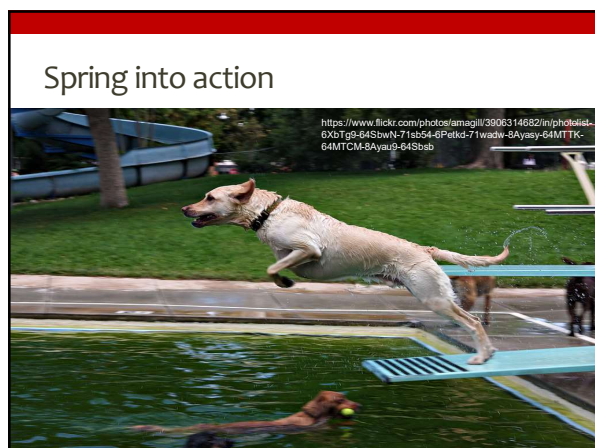
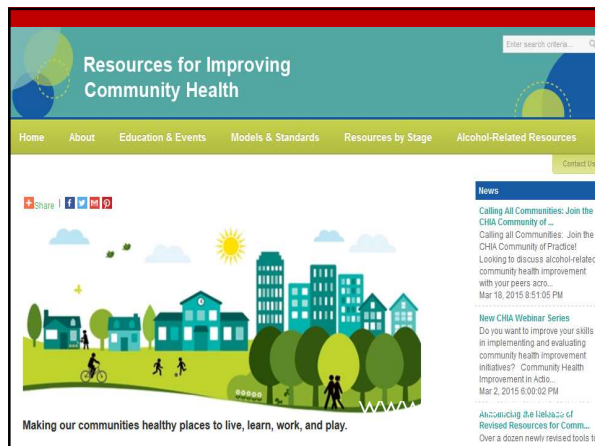
Template Implementation Plan: Create an action and evaluation plan

Template Fact Sheets: Report to stakeholders & the community, for 19 Health Focus Areas

Community Health Improvement in Action



Thank you!

Sarah Grosshuesch, MPH

Public Health Officer

Adams County Health & Human Services Department

608-339-4379 sarah.grosshuesch@co.adams.wi.us

Sara Jesse

Project Manager

Community Health Improvement in Action (WALHDAB)

608-432-3042 Sara.Jesse@badgerbay.co