



University of Wisconsin
Population Health Institute

UNIVERSITY OF WISCONSIN
SCHOOL OF MEDICINE AND PUBLIC HEALTH

In Commemoration of the Minority Health Month

From Data to Action: Creating Equitable Conditions for Everyone to be Healthy

Salma Abadin, MPH (she): Action Researcher and Evaluator

Eunice Park, PhD (she): Data Analyst

Agenda of the Day

- Meet the Organization
- Minority Health in Wisconsin
- Health Equity Efforts at UWPHI
- Questions and Comments

Meet the Organization



University of Wisconsin
Population Health Institute

UNIVERSITY OF WISCONSIN
SCHOOL OF MEDICINE AND PUBLIC HEALTH



University of Wisconsin
Population Health Institute
UNIVERSITY OF WISCONSIN
SCHOOL OF MEDICINE AND PUBLIC HEALTH

The University of Wisconsin's Population Health Institute (PHI) advances **health, health equity and well-being for all**, and works at local, state and national levels.

PHI uses **evidence-based approaches** to inform and strategize public health practices and initiatives. Our projects and teams support government, health departments and community organizations within Wisconsin and around the nation.

What do we mean by **health equity**?

*Health equity means that everyone has a fair and just **opportunity** to be as healthy as possible.*

Braveman et al, 2017

What do we mean by **deep health equity**?

*Deep health equity attends to the historical hurt and harms that created health inequities by accurately **diagnosing core problems, naming historical context, and offering vast solutions.***

Adapted from Brown, 2020

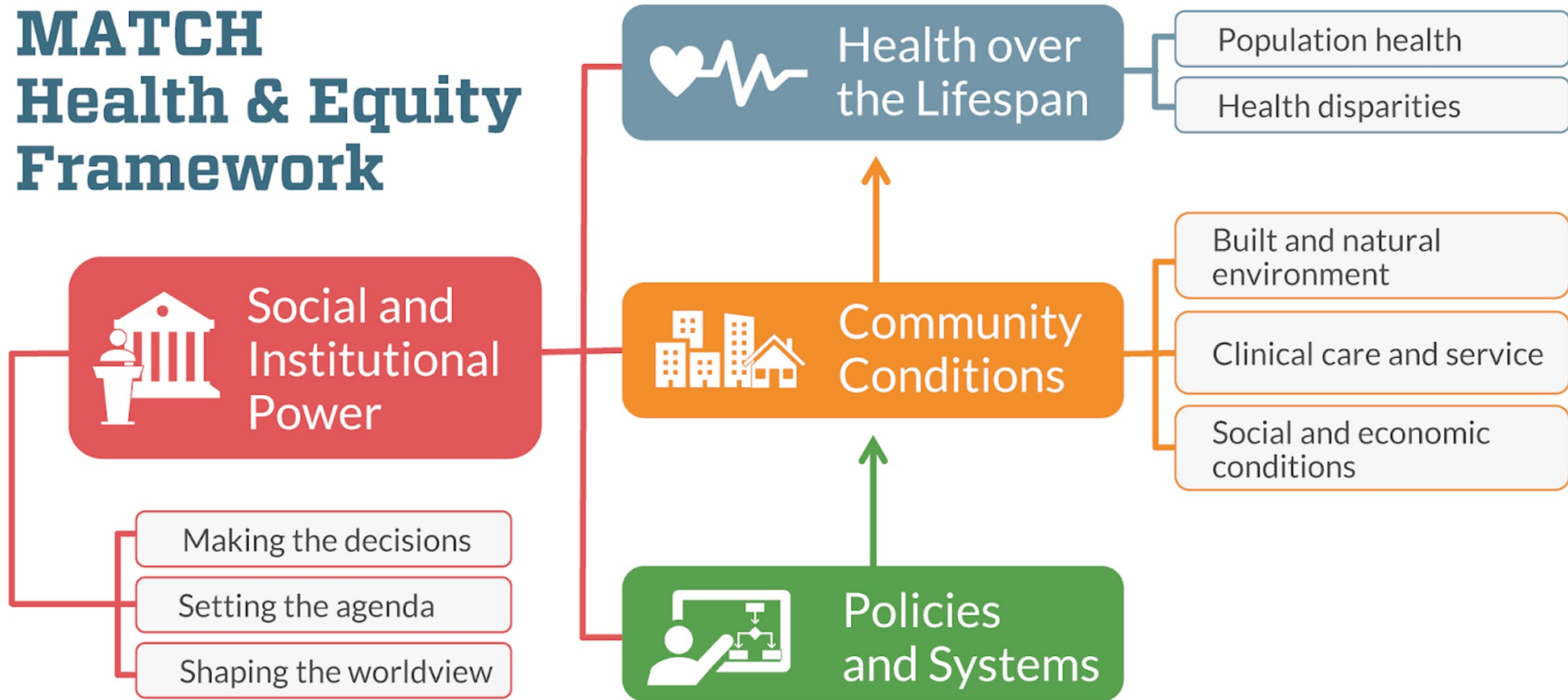
Health Equity Efforts at UWPHI

*We operate from a broad and inclusive view of health equity and recognize **the intersection of identities and structuring of opportunity** related to race, social class, gender, sexual orientation, religion, disability, geographic and immigration status domains.*

*Our work must clearly describe how the distribution and unethical use of power results in **systematic differences** in how long and well people live.*

MATCH Health & Equity Framework

MATCH Health & Equity Framework



Programs at UWPHI

County Health Rankings & Roadmaps (CHR&R)

Health Rankings (Data)

- Health Outcomes
 - Length & Quality of Life
- Health Factors
 - Health Behaviors
 - Clinical Care
 - Social and Economic
 - Physical Environment

Action to Improve Health (Evidence)

- What Works for Health

Stories (Examples)

- Community Stories

Evaluation and Engaged Research

Behavioral Health

- Prevention and Treatment
- Behavioral Health in Criminal Justice Populations

Child & Family Health Promotion Programs

Community Health Promotion

Policy & Systems Change Evaluation Projects

Mobilizing Action Toward Community Health

Training

- Building capacity on critical practices through delivering training, providing technical assistance, and leading learning and action networks

Engaged Research and Development

- Supporting data-to-action and developing and sharing scholarship, frameworks, and tools for change

Alignment

- Convening and growing alliances for shared action

Growing community power to improve health equity

Data



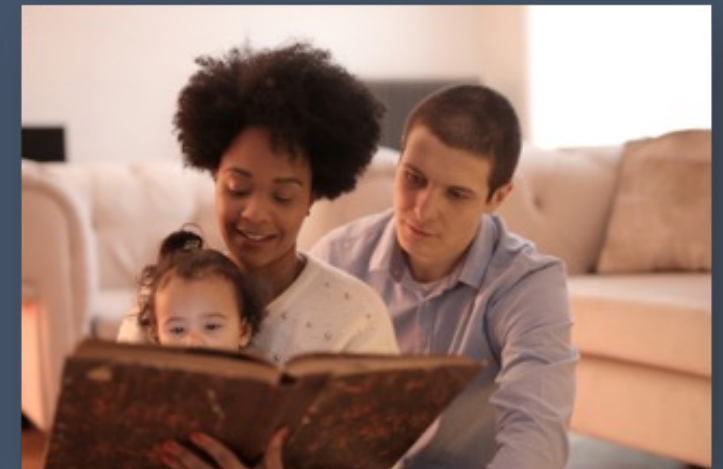
Guidance



Evidence



Stories



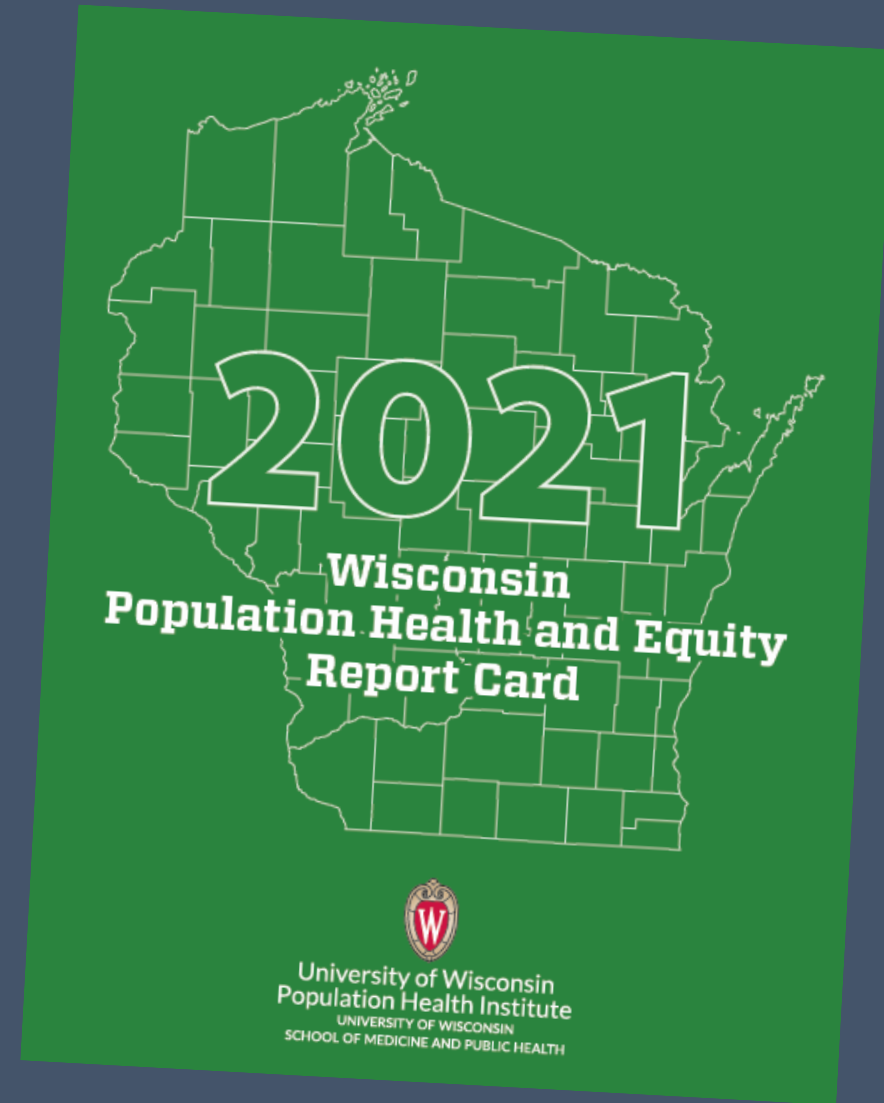
Minority Health in Wisconsin

2021 Population Health and Equity Report Card

2023 County Health Rankings

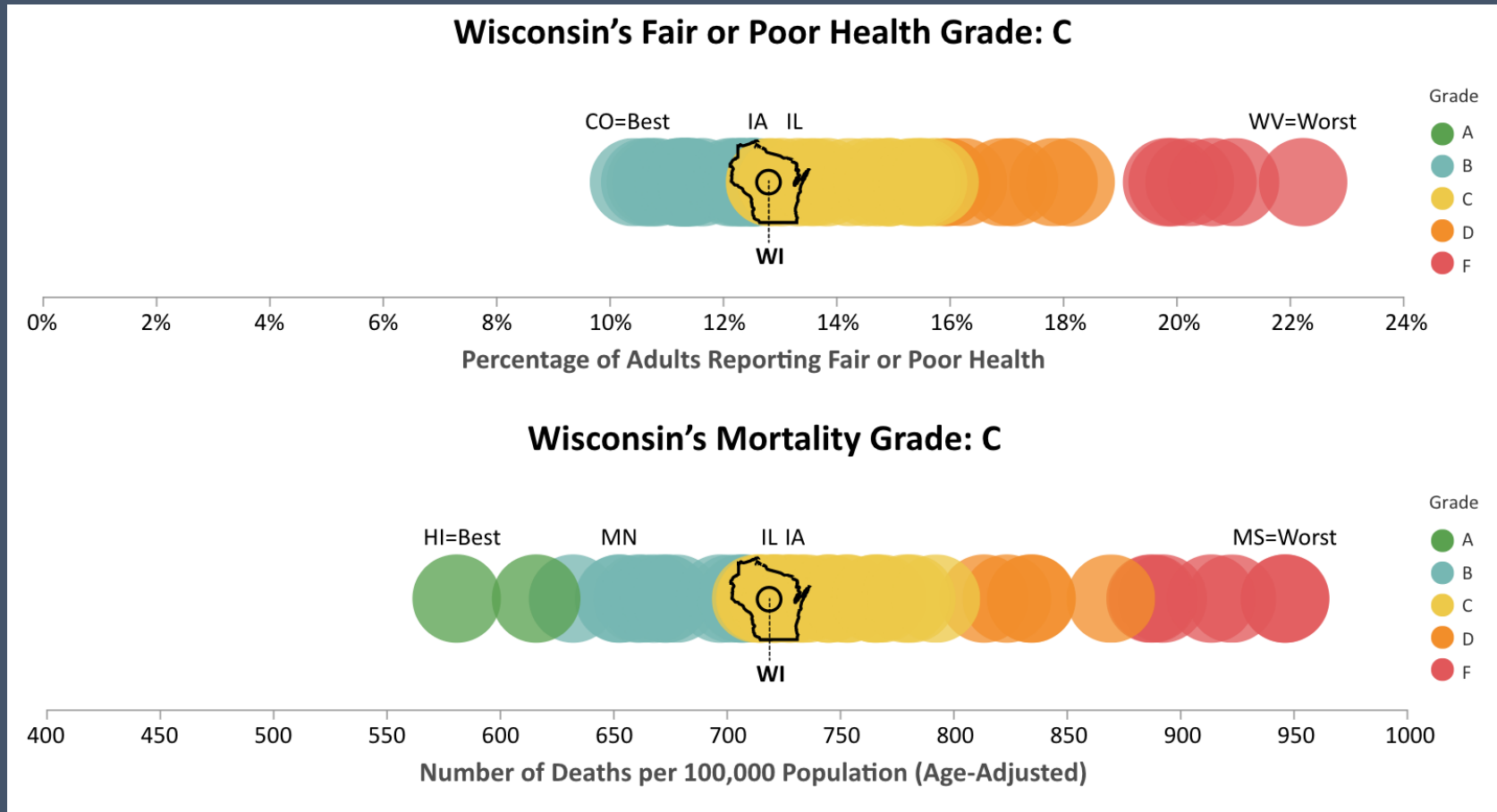
2021 Population Health and Equity Report Card

- 1) Quantitative data
- 2) Qualitative data
- 3) Evidence-informed policies and practices

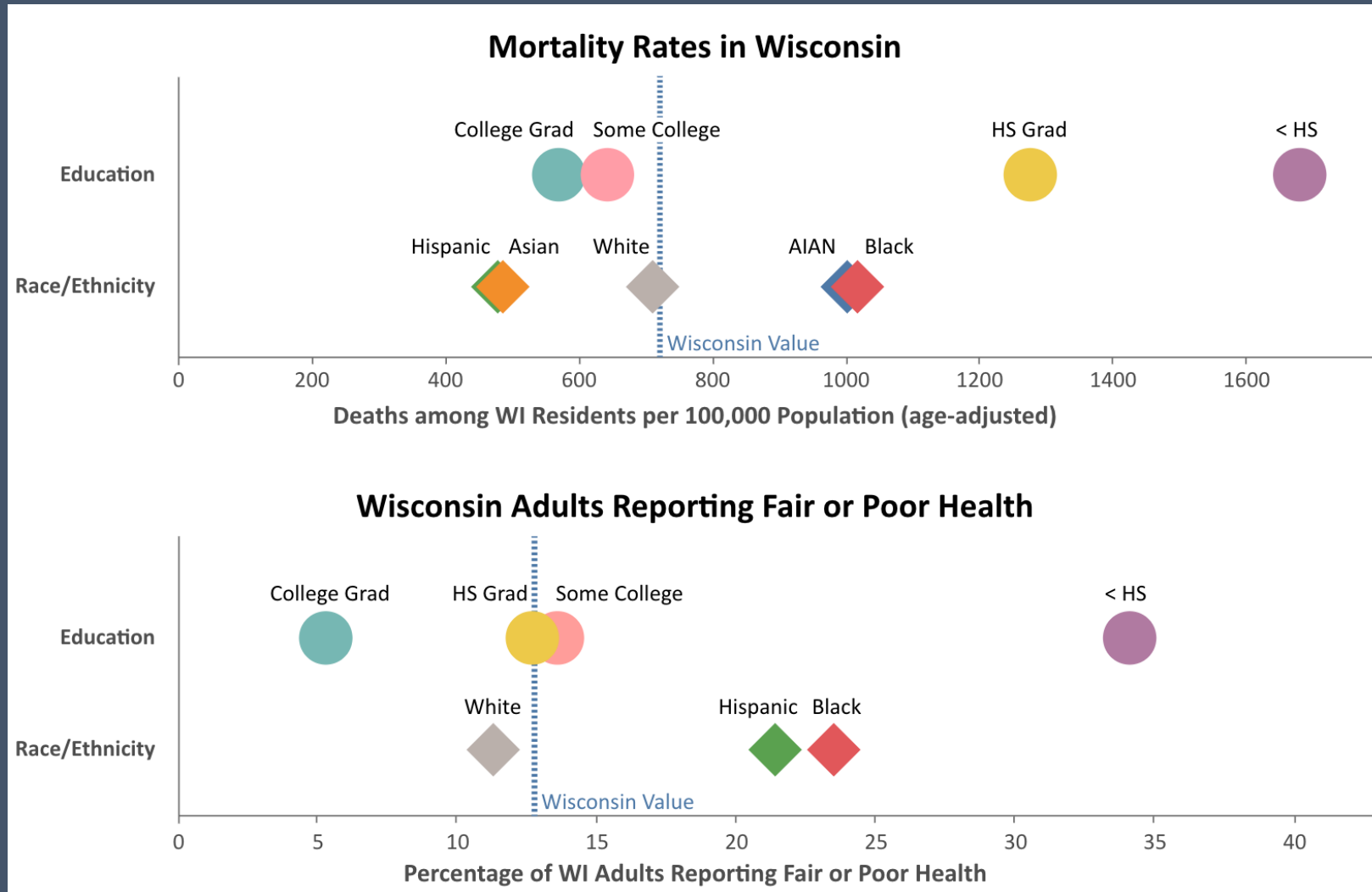


Overall Health of Wisconsin

Fair or Poor Health & Mortality in Wisconsin



Educational & Racial/Ethnic Disparities

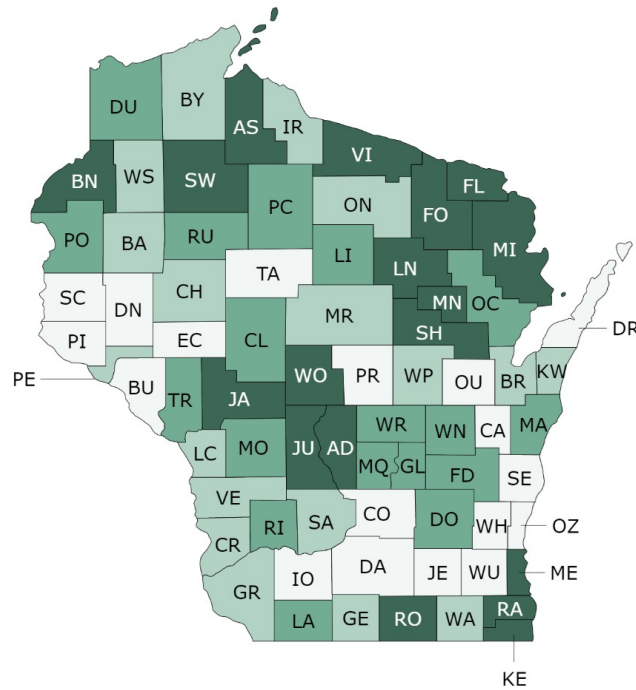


2023 County Health Rankings

County Health Rankings & Roadmaps

Building a Culture of Health, County by County

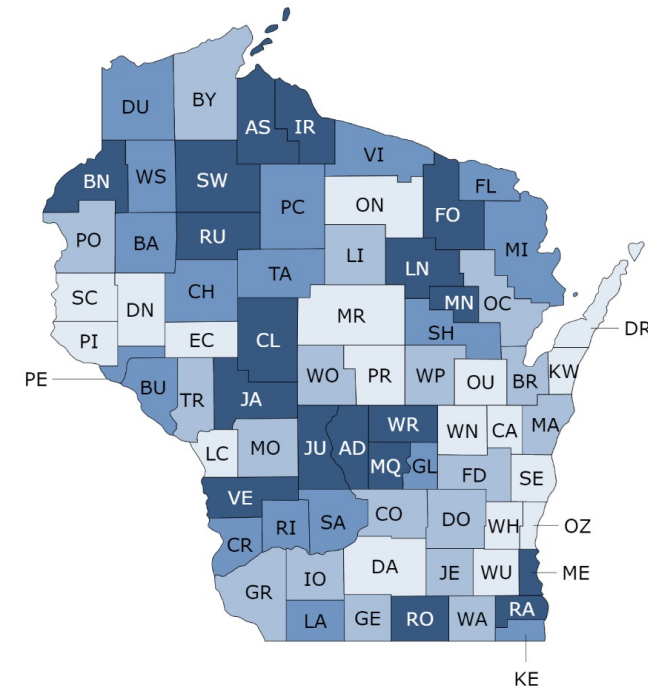
2023 Health Outcomes - Wisconsin



Health Outcome Ranks

1 to 18	19 to 36	37 to 54	55 to 72
---------	----------	----------	----------

2023 Health Factors - Wisconsin



Health Factor Ranks

1 to 18	19 to 36	37 to 54	55 to 72
---------	----------	----------	----------

Eau Claire County

Jackson County

Population	106,452
Rurality (% rural)	23.0%
Median Household Income	\$63,100
Children in Poverty	12%
Uninsured	8%
Access to Exercise Opportunities	82%
Premature Death	5,700
Poor or Fair Health	11%
Low Birthweight	7%
Life Expectancy	79.4
Broadband Access	89%
Flu Vaccination	62%

Population	21,121
Rurality (% rural)	72.2%
Median Household Income	\$59,500
Children in Poverty	18%
Uninsured	11%
Access to Exercise Opportunities	49%
Premature Death	9,100
Poor or Fair Health	14%
Low Birthweight	5%
Life Expectancy	77.1
Broadband Access	82%
Flu Vaccination	54%

Health Outcomes Rank	#17
Health Factors Rank	#12

Health Outcomes Rank	#64
Health Factors Rank	#67

Median Household Income

United States	\$69,700
Wisconsin	\$67,200

Eau Claire County, Wisconsin

Eau Claire County	\$63,100
AIAN	n/a
Asian	\$55,300
Hispanic	\$49,000
White	\$65,300

Jackson County, Wisconsin

Jackson County	\$59,500
AIAN	\$34,600
Asian	\$73,800
Hispanic	\$55,800
White	\$60,600

Children in Poverty

United States	17%
Wisconsin	14%

Eau Claire County, Wisconsin

Eau Claire County	12%
AIAN	n/a
Asian	5%
Black	55%
Hispanic	27%
White	9%

Jackson County, Wisconsin

Jackson County	18%
AIAN	44%
Asian	14%
Black	n/a
Hispanic	37%
White	11%

Life Expectancy, Low Birthweight, and Flu Vaccination in Eau Claire

Life Expectancy

United States	78.5
Wisconsin	78.9
Eau Claire County	79.4
Asian	78.8
Black	78.1
White	79.4

Data Source: National Center for Health Statistics (2018-2020)

Low Birthweight

United States	8%
Wisconsin	8%
Eau Claire County	7%
Asian	7%
Black	13%
Hispanic	10%
White	6%

Data Source: National Center for Health Statistics (2014-2020)

Flu Vaccination

United States	51%
Wisconsin	56%
Eau Claire County	62%
AIAN	40%
Asian	48%
Black	47%
Hispanic	58%
White	62%

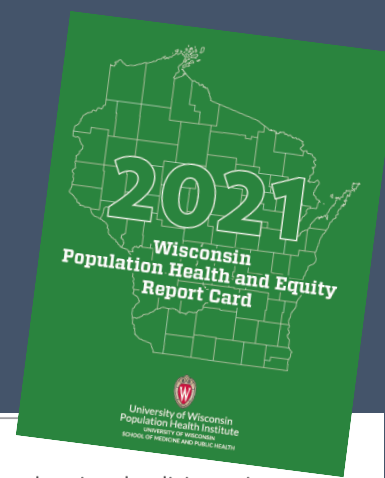
Data Source: Mapping Medicare Disparities Tool (2020)

Health Equity Efforts at UWPHI

2021 Population Health and Equity Report Card

Improving Wisconsin's Health

2021 Report Card Policy Priorities



- Ensuring access to quality health care
- Expanding safe and affordable housing
- Increasing economic resources for children and families
- Expanding broadband infrastructure
- Increasing civic engagement



Call to Action

Access to affordable, quality health care is a priority for everyone. State and national policies to increase access to insurance can benefit people of all races, ethnicities, and geographies. Strategies proven to reduce barriers can increase access to care and improve health and well-being. While coverage alone does not guarantee access, it is an essential first step. Recommendations include:

- Expanding BadgerCare Plus in Wisconsin to make affordable coverage available to an additional 90,000 residents by increasing eligibility to adults at 138 percent of the poverty level.
- [Providing health insurance outreach and support](#) and [engaging community health workers](#) to assist individuals at high risk for poor health outcomes and whose employers do not offer affordable coverage or who are self-employed or unemployed.
- Increasing support for [non-profit health care organizations](#) (often called community health centers) and delivering comprehensive care to uninsured, underinsured, and patients who are medically vulnerable regardless of ability to pay.
- [Tailoring health care](#) to patients' norms, beliefs, and values, as well as their language and literacy skills by [increasing health care providers' skills and knowledge](#) to understand and respond to cultural differences and value diversity.
- [Delivering consultative, diagnostic, and treatment services remotely](#) to patients living in areas with limited access to care or who require frequent monitoring.



Wisconsin Communities in Action

Jefferson County, Wisconsin: In 2020, three clinics in Jefferson and Dodge counties merged to form Rock River Community Clinic (RRCC) to serve people who are medically underserved within their communities. The RRCC was established with support from an ongoing initiative in Jefferson County called the Rock River Health Care Network (RRHCN) that focuses on advance access to primary care for individuals of lower-income. The RRHCN was awarded a \$900,000 grant to advance health equity in Jefferson and Dodge Counties. One of its first activities was to assist RRCC in installing an electronic health record system and developing more robust clinical systems, including operationalizing a community-based health center.

Improving Wisconsin's Health



Local public health and health care systems across Wisconsin conduct priority-setting processes. The University of Wisconsin Population Health Institute has compiled priorities from community health needs assessments (CHNA/CHA) and community health improvement plans (CHIP) from hospitals and health departments to **create opportunities for shared learning and alignment of efforts.**

Submit

Your organization's most recent community health assessment (CHNA/CHA) and improvement plan (CHIP)

Click a county in the map to see more.



Or, search by health priority:

Alcohol use

GO

What are hospitals and health departments working on in my county?



Studies and Reports on Promoting Health Equity

HEALTH AFFAIRS FOREFRONT

RELATED TOPICS:
PUBLIC HEALTH | POPULATION HEALTH | PANDEMICS | RACISM | PUBLIC OPINION
| HEALTH EQUITY | HEALTH DISPARITIES

Voting And Civic Engagement Rights Are Eroding: What Does It Mean For Health And Equity?

[Elizabeth A. Pollock](#), [Marjory L. Givens](#), [Sheri P. Johnson](#)

MARCH 9, 2022 DOI: 10.1377/forefront.20220307.730059

Article



From Roots to Results: A Qualitative Case Study of the Evolution of a Public Health Leadership Institute Building Capacity in Collaborating for Equity and Justice

Lesley Wolf, BA¹, Abra J. Vigna, PhD¹,
Paula Tran Inzeo, MPH¹, Marion Ceraso, MHS, MA²,
and Tom Wolff, PhD³

Health Education & Behavior
2019, Vol. 46(1S) 335-435
© 2019 Society for Public
Health Education
Article reuse guidelines:
sagepub.com/journals-permissions
DOI: 10.1177/1090198119853616
journals.sagepub.com/home/heb
SAGE

*Journal of Clinical and
Translational Science*

www.cambridge.org/cts

**Implementation, Policy and
Community Engagement
Special Communication**

Co-designing to advance community health and health equity in Wisconsin: Building the Neighborhood Health Partnerships Program

Jessica Bonham-Werling^{1,2}, Susan Passmore³, Korina Hendricks^{1,2},
Lauren Bednarz^{1,2}, Victoria Faust⁴, Alan Talaga⁴ and Maureen Smith^{1,2,5}

¹Health Innovation Program, University of Wisconsin - Madison, Madison, WI, USA; ²Department of Population Health Sciences, University of Wisconsin - Madison, Madison, WI, USA; ³Collaborative Center for Health Equity, University of Wisconsin - Madison, Madison, WI, USA; ⁴Population Health Institute, University of Wisconsin - Madison, Madison, WI, USA and ⁵Department of Family Medicine and Community Health, University of Wisconsin - Madison, Madison, WI, USA

MEDICINE AND SOCIETY

Deconstructing Inequities — Transparent Values in Measurement and Analytic Choices

Marjory L. Givens, Ph.D., Keith P. Gennuso, Ph.D., Elizabeth A. Pollock, Ph.D., and Sheri L. Johnson, Ph.D.

Theory in Action: Public Health and Community Power Building for Health Equity

Jonathan C. Heller, PhD; Olivia M. Little, PhD; Victoria Faust, MPA; Paula Tran, MPH; Marjory L. Givens, PhD; Jeanne Ayers, MPH, RN; Lili Farhang, MPH

HEALTH AFFAIRS FOREFRONT | HEALTH EQUITY
RELATED TOPICS:
PUBLIC HEALTH | HEALTH EQUITY | SOCIAL DETERMINANTS OF HEALTH | DECISION MAKING
| HEALTH DISPARITIES | POPULATION HEALTH

Power: The Most Fundamental Cause of Health Inequity?

[Marjory L. Givens](#), [David Kindig](#), [Paula Tran Inzeo](#), [Victoria Faust](#)

FEBRUARY 1, 2018 DOI: 10.1377/forefront.20180129.731387

Review > [Health Equity](#). 2020 Oct 19;4(1):446-462. doi: 10.1089/heq.2020.0013.

eCollection 2020.

What Do We Know About the Drivers of Health and Equity? A Narrative Review of Graphic Representations

Marjory L Givens¹, Bridget B Catlin¹, Sheri P Johnson¹, Elizabeth A Pollock¹,
Victoria N Faust¹, Paula Tran Inzeo¹, David A Kindig¹

Affiliations + expand

PMID: 33111031 PMID: PMC7585620 DOI: 10.1089/heq.2020.0013



Sheri Johnson, PhD



Robert N. Golden, MD

A Health Equity Mindset

Sheri Johnson, PhD; Robert N. Golden, MD

Studies and Reports on Rural Health and Equity

HEALTH AFFAIRS FOREFRONT

RELATED TOPICS:
MORTALITY | MEDIA | HEALTH DISPARITIES | ACCESS TO CARE | PUBLIC HEALTH | RATING
| PATIENT CARE | PATIENT SAFETY | DRUG USE | EDUCATION

Does The Rural-Urban Frame Help Explain Health Status?

[Donna Friedsam](#)

APRIL 30, 2018

10.1377/forefront.20180426.201480



[Home](#) / [News & Announcements from UW PHH](#) /

[How Rural is Defined and Why it Matters in Health and Equity Research](#)

How Rural is Defined and Why it Matters in Health and Equity Research



"We cannot separate the question of how rural America is defined from conversations around critical issues like education, health, racial equity, and economic opportunity in the U.S."

PUBLIC HEALTH

Reproductive Healthcare: An Intersectional Component of Healthy Rural Communities

JULY 7, 2022 • MARJORY GIVENS

A Just Recovery for Rural Equity in Wisconsin

January 2021



WI Community Resilience
and Response Task Force

Studies & Reports on Racial/Ethnic Health Equity

> [Contraception](#). 2018 May;97(5):399-404. doi: 10.1016/j.contraception.2018.01.006. Epub 2018 Feb 10.

Racial and ethnic differences in patterns of long-acting reversible contraceptive use in the United States, 2011–2015

Renee D Kramer ¹, Jenny A Higgins ², Amy L Godecker ³, Deborah B Ehrental ⁴

Affiliations + expand

PMID: 29355492 PMCID: [PMC5965256](#) DOI: [10.1016/j.contraception.2018.01.006](#)

BORDER HEALTH

By Keith P. Gennuso, Elizabeth A. Pollock, and Anne M. Roubal

Life Expectancy At The US-Mexico Border: Evidence Of Disparities By Place, Race, And Ethnicity

Pollock et al. *BMC Public Health* (2021) 21:1117
<https://doi.org/10.1186/s12889-021-11185-x>

BMC Public Health

RESEARCH ARTICLE

Open Access

Trends in infants born at low birthweight and disparities by maternal race and education from 2003 to 2018 in the United States



Elizabeth A. Pollock ^{*}, Keith P. Gennuso, Marjory L. Givens and David Kindig

Achieving Racial and Health Equity: Strengthening Milwaukee County's Public Health Infrastructure

February 2022



Mobilizing Action Toward
Community Health (MATCH)
University of Wisconsin Population Health Institute
SCHOOL OF MEDICINE AND PUBLIC HEALTH

Podcast and Webinars



Webinar Series

- Breaking Down the Rankings (2)
- COVID19 (5)
- Equity (12)
- Partnerships (2)
- Putting County Health Rankings into Action (3)
- Rankings 101 (3)
- Special Indepth Topics (18)
- Take Action (27)
- Using the Rankings Roadmaps Website (1)
- Webinar Shorts (4)

Topic

- Action Steps (2)
- Act on What Is Important (1)
- Equity (12)
- Health Outcomes (1)
- Partners (1)
- Physical Environment (2)
- Social Economic Factors (4)
- What Works for Health (1)
- Work Together (2)

Getting ready for the 2023 County Health Rankings release

Series: [Breaking Down the Rankings](#)

Date & Time: March 14, 2023 3pm EDT

Get ready for the County Health Rankings annual release complete with new measures and a focus on the connection between civic health and thriving people and places. Join our March webinar for a preview of the 2023 Rankings Release. We'll introduce you to new and easy ways to find data and we'll highlight new strategies from What Works for Health to build equity in your community. We will also preview our latest podcast series, [In Solidarity](#), featuring nine interviews with some of the nation's most forward thinkers on equity and health.



Questions?
Comments?



Stay connected!



University of Wisconsin Population Health Institute
Value each other, honor connectedness & build communities where everyone can thrive
Research Services · Madison, WI · 415 followers



← **UWiscPHI**
862 Tweets



UWiscPHI
@UWiscPHI

The University of Wisconsin Population Health Institute, part of @uwsmph within @UWMadison.

Follow

Thank you!



University of Wisconsin
Population Health Institute

UNIVERSITY OF WISCONSIN
SCHOOL OF MEDICINE AND PUBLIC HEALTH