



Sexually Transmitted Infections in Wisconsin, 2023

Western Region

Wisconsin Department of Health Services | Division of Public Health | STI Unit

P-00415A (09/2024)



Wisconsin Sexually Transmitted Disease Surveillance Report

Western Region – 2023

Introduction

The Wisconsin STI Regional Surveillance reports highlight STI data broken down by public health region. Additional statewide data and Milwaukee County specific data can be found on the WI Department of Health Services (DHS) STI Unit [Surveillance Data web page](#).

This report recognizes that there are many systemic barriers and social factors driving the inequities seen in the data throughout the report. STIs can affect anyone; however, some communities have much higher rates of infection than others. These disparities are not due to behavioral practices alone. There are many different social conditions, policies, and systemic practices that put some people at higher risk for STIs, such as:

- Racism
- Discrimination
- Oppression
- Poverty
- Lack of access to sexual health education
- Lack of access to health care
- Stigma

Systemic conditions like these can lead to higher prevalence of STIs in the community. In communities with higher STI rates, it is easier for a person to get an STI because it is more likely that their sexual partner(s) have already been exposed.

Overview

In 2023, 2,477 cases of sexually transmitted infections (STIs) were reported in the Western Region. Of these, **chlamydia** accounted for 86% (2,125), **gonorrhea** accounted for 11% (266), and **syphilis** accounted for 3% (86) of cases. The reported number of STI cases in 2023 was 10% less than the number of cases reported in 2022 (2,742 cases).

Among the three STIs reported, the number of **gonorrhea cases decreased by 38%** in 2023. **Syphilis cases decreased by 9%** and **chlamydia cases also decreased by 4%** compared to 2022.

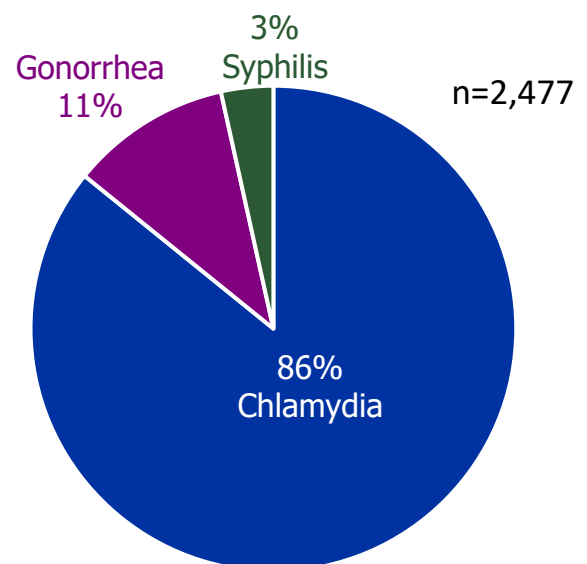


Figure 1.

Reported cases of gonorrhea and chlamydia decreased for the second year in a row. Syphilis cases also decreased from 2022 to 2023.

Trend of reported STI cases, Western Region, 2019–2023

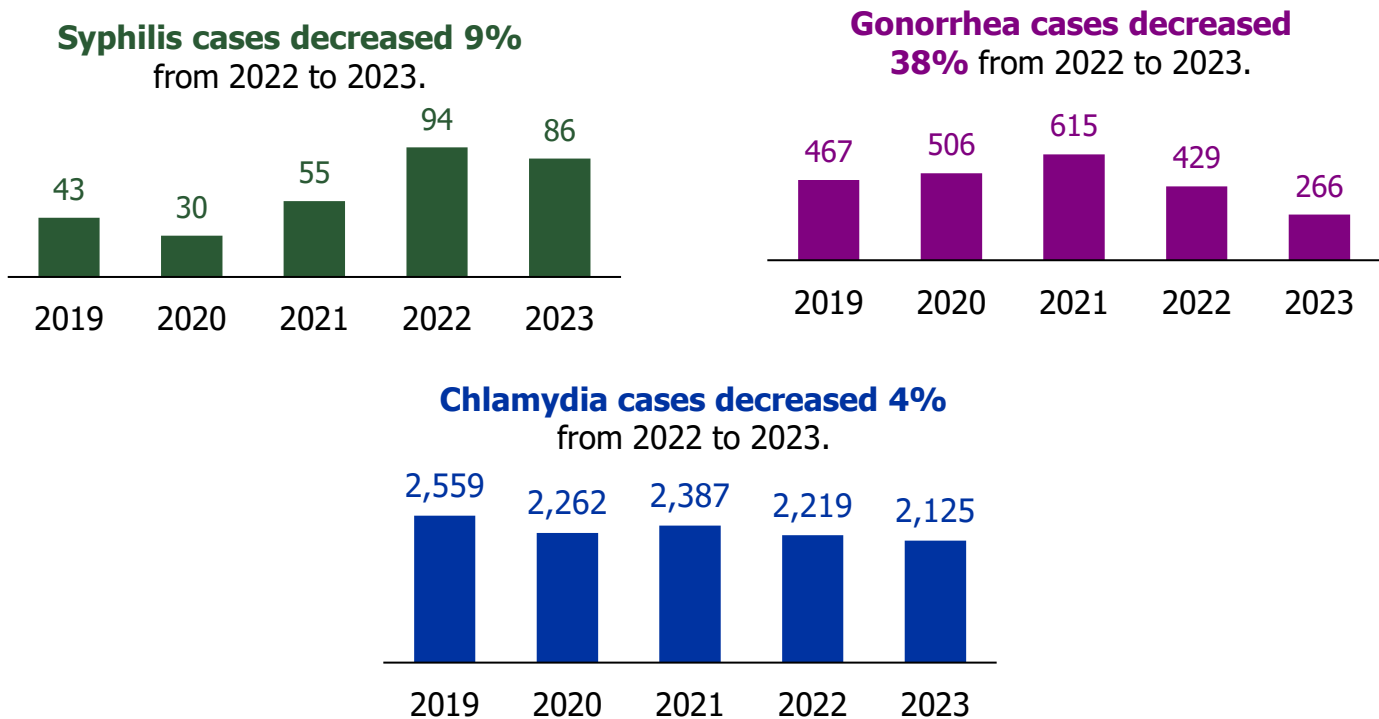
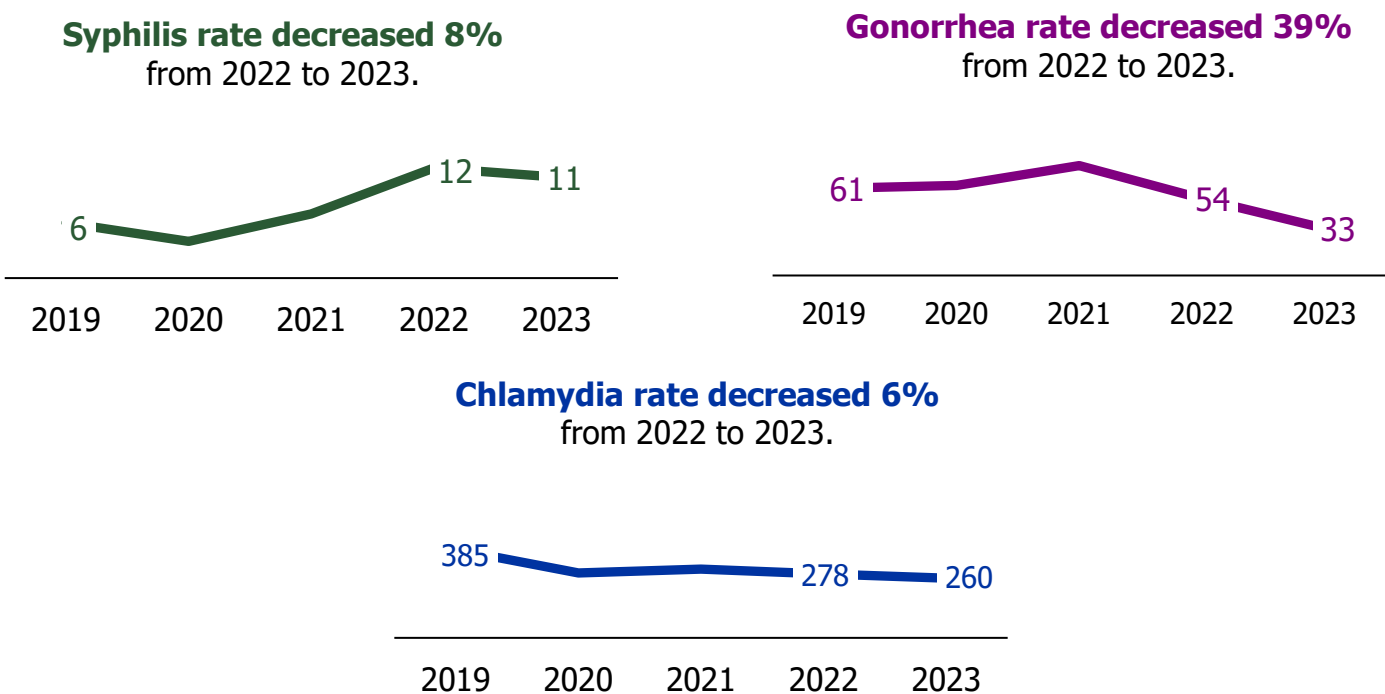


Figure 2.

In 2023, all STI rates decreased in the Western Region with the rate of gonorrhea decreasing the most (41%).

Rate of reported STI cases 100,000 people, Western Region, 2019–2023



Key takeaways from 2023 data:



Sexually transmitted infections are widespread, impacting people of all racial and ethnic groups, genders, and ages in the Western region.



There was a significant decrease (39%) in the rate of gonorrhea in the Western Region.



The populations at highest risk include people between ages of 20–35 years.

Wisconsin Sexually Transmitted Infection (STI) Surveillance Report

Reported Cases and Rates per 100,000 people by Gender, Race, Ethnicity, and Age

Western Region - 2023

	Chlamydia			Gonorrhea			Syphilis			Total		
	Cases	Percent	Rates	Cases	Percent	Rates	Cases	Percent	Rates	Cases	Percent	Rates
Total	2,125	100.0%	260	266	100.0%	33	86	100.0%	11	2,476	100.0%	303
Gender												
Male	697	32.8%	169	127	47.5%	31	58	67.4%	14	881	35.6%	213
Female	1,422	66.9%	352	138	52.1%	34	28	32.6%	7	1,588	64.1%	393
Transgender Female	1	0.0%	-	0	0.0%	-	0	0.0%	-	1	0.0%	-
Transgender Male	0	0.0%	-	0	0.0%	-	0	0.0%	-	0	0.0%	-
Unknown	5	0.2%	-	1	0.4%	-	0	0.0%	-	6	0.2%	-
Race/Ethnicity												
White	1,603	75.4%	215	194	72.8%	26	61	70.9%	8	1,857	75.0%	250
Black	167	7.9%	1,831	40	15.1%	439	11	12.8%	121^	218	8.8%	2,390
Native American	29	1.4%	427	4	1.5%	*	5	5.8%	*	38	1.5%	559
Asian	44	2.1%	251	3	1.1%	*	1	1.2%	*	48	1.9%	274
Two or More Races	4	0.2%	*	0	0.0%	0	1	1.2%	*	5	0.2%	*
Hispanic	195	9.2%	767	13	4.9%	51	7	8.1%	28^	215	8.7%	846
Other/Unknown	83	3.9%	-	12	4.5%	-	0	1.2%	-	95	3.8%	-
Age												
0-4	1	0.0%	*	0	0.0%	0	0	0.0%	0	1	0.0%	*
5-9	0	0.0%	0	0	0.0%	0	0	0.0%	0	0	0.0%	0
10-14	25	1.2%	50	2	0.8%	*	0	0.0%	0	27	1.1%	54
15-19	580	27.3%	1,033	38	14.3%	68	1	1.2%	*	619	25.0%	1,102
20-24	834	39.2%	1,310	61	22.9%	96	8	9.3%	13^	903	36.5%	1,419
25-29	296	13.9%	630	38	14.3%	81	18	20.9%	38	352	14.2%	750
30-34	184	8.7%	397	43	16.2%	93	9	10.5%	19^	236	9.5%	509
35-39	90	4.2%	182	29	10.9%	59	11	12.8%	22^	130	5.2%	263
40-44	57	2.7%	114	26	9.8%	52	21	24.4%	42	104	4.2%	208
45-49	25	1.2%	57	13	4.9%	30	5	5.8%	*	43	1.7%	98
50+	33	1.6%	10	16	6.0%	5	13	15.1%	4	62	2.5%	19

*Rates based on five case counts or less are not shown. ^Rate is unreliable due to a count <12.

Wisconsin Sexually Transmitted Infections (STI) Surveillance Report

Reported Cases and Rates per 100,000 people by County.

Western Region - 2023

Western	Chlamydia			Gonorrhea			Syphilis			Total		
	Case	Percent	Rates	Case	Percent	Rates	Case	Percent	Rates	Case	Percent	Rates
Barron	105	4.9%	224	14	5.3%	30	10	11.6%	21	129	5.2%	275
Buffalo	17	0.8%	127	4	1.5%	*	2	2.3%	*	23	0.9%	172
Burnett	11	0.5%	65^	0	0.0%	0	5	5.8%	*	16	0.6%	94
Chippewa	146	6.9%	219	16	6.0%	24	4	4.7%	*	166	6.7%	248
Clark	62	2.9%	179	5	1.9%	*	4	4.7%	*	71	2.9%	205
Douglas	108	5.1%	245	26	9.8%	59	12	14.0%	27^	146	5.9%	331
Dunn	121	5.7%	265	17	6.4%	37	6	7.0%	13^	144	5.8%	315
Eau Claire	379	17.8%	355	51	19.2%	48	15	17.4%	14	445	18.0%	417
Jackson	31	1.5%	149	3	1.1%	*	1	1.2%	*	35	1.4%	168
La Crosse	498	23.4%	414	60	22.6%	50	9	10.5%	7^	567	22.9%	471
Monroe	132	6.2%	286	7	2.6%	15^	2	2.3%	*	141	5.7%	306
Pepin	12	0.6%	162^	1	0.4%	*	1	1.2%	*	14	0.6%	189
Pierce	97	4.6%	228	11	4.2%	26^	3	3.5%	*	111	4.5%	261
Polk	77	3.6%	168	7	2.6%	15^	5	5.8%	*	89	3.6%	195
Rusk	22	1.0%	155	3	1.1%	*	0	0.0%	*	25	1.0%	176
Saint Croix	175	8.2%	182	33	12.5%	34	5	5.8%	*	213	8.6%	222
Trempealeau	106	5.0%	343	6	2.3%	19^	1	1.2%	*	113	4.6%	366
Washburn	26	1.2%	154	2	0.8%	*	1	1.2%	*	29	1.2%	171
Region total	2,125	100.0%	260	266	100.0%	33	86	100.0%	11	2,477	100.0%	303

*Rates based on five case counts or less are not shown. ^Rate is unreliable due to a count <12.

Wisconsin Syphilis Surveillance Report - Reported Cases and Rates per 100,000 people by Stage of Infection, Gender, Race, Ethnicity, and Age

Western Region- 2023

	Primary			Secondary			Early Latent			Early Total		
	Cases	Percent	Rates	Cases	Percent	Rates	Cases	Percent	Rates	Cases	Percent	Rates
Total	8	100%	1	18	100%	2	24	100%	3	50	100%	6
Gender												
Male	7	88%	2^	12	67%	3^	12	50%	3^	31	62%	8
Female	1	13%	*	6	33%	*	12	50%	3^	19	38%	5
Transgender Female	0	0%	-	0	0%	-	0	0%	-	0	0%	-
Transgender Male	0	0%	-	0	0%	-	0	0%	-	0	0%	-
Unknown	0	0%	-	0	0%	-	0	0%	-	0	0%	-
Race/Ethnicity												
White	5	63%	*	16	89%	2^	17	71%	2	38	76%	5
Black	1	13%	*	0	0%	*	2	8%	*	3	6%	*
American Indian	1	13%	*	1	6%	*	3	13%	*	5	10%	*
Asian	0	0%	*	1	6%	*	0	0%	*	1	2%	*
Two or More Races	1	13%	*	0	0%	0	0	0%	0	1	2%	*
Hispanic	0	0%	*	0	0%	*	2	8%	*	2	4%	*
Other/Unknown	0	0%	-	0	0%	-	0	0%	-	0	0%	-
Age												
0-4	0	0%	0	0	0%	0	0	0%	0	0	0%	0
5-9	0	0%	0	0	0%	0	0	0%	0	0	0%	0
10-14	0	0%	0	0	0%	0	0	0%	0	0	0%	0
15-19	0	0%	0	0	0%	0	0	0%	0	0	0%	0
20-24	1	13%	*	1	6%	*	2	8%	*	4	8%	*
25-29	1	13%	*	2	11%	*	9	38%	19^	12	24%	26^
30-34	1	13%	*	3	17%	*	3	13%	*	7	14%	15^
35-39	2	25%	*	3	17%	*	2	8%	*	7	14%	14^
40-44	2	25%	*	4	22%	*	4	17%	*	10	20%	20^
45-49	0	0%	*	2	17%	*	3	13%	*	5	10%	*
50+	1	13%	*	3	0%	*	1	4%	*	5	10%	*

*Rates based on five case counts or less are not shown. ^Rate is unreliable due to a count <12.

Wisconsin Syphilis Surveillance Report - Reported Cases and Rates per 100,000 people by Stage of Infection, Gender, Race, Ethnicity, and Age Western Region - 2023

	Early Total			Late Latent			Congenital			All Stage Total		
	Cases	Percent	Rates	Cases	Percent	Rates	Cases	Percent	Rates	Cases	Percent	Rates
Total	50	100%	6	36	100%	4	0	0%	0	86	100%	11
Gender												
Male	31	62%	8	27	75%	7	0	0%	0	58	67%	14
Female	19	38%	5	9	25%	2^	0	0%	0	28	33%	7
Transgender Female	0	0%	-	0	0%	-	0	0%	-	0	0%	-
Transgender Male	0	0%	-	0	0%	-	0	0%	-	0	0%	-
Unknown	0	0%	-	0	0%	-	0	0%	-	0	0%	-
Race/Ethnicity												
White	38	76%	5	23	64%	3	0	0%	0	61	71%	8
Black	3	6%	*	8	22%	88^	0	0%	0	11	13%	121^
American Indian	5	10%	*	0	0%	0	0	0%	0	5	6%	*
Asian	1	2%	*	0	0%	0	0	0%	0	1	1%	*
Two More Races	1	2%	*	0	0%	0	0	0%	0	1	1%	*
Hispanic	2	2%	*	5	14%	*	0	0%	*	7	8%	28^
Other/Unknown	0	0%	-	0	0%	-	0	0%	-	0	0%	-
Age												
0-4	0	0%	0	0	0%	0	0	0%	0	0	0%	0
5-9	0	0%	0	0	0%	0	0	0%	0	0	0%	0
10-14	0	0%	0	0	0%	0	0	0%	0	0	0%	0
15-19	0	0%	0	1	3%	*	0	0%	0	1	1%	*
20-24	4	8%	*	4	11%	*	0	0%	0	8	9%	13^
25-29	12	24%	26^	6	17%	13^	0	0%	0	18	21%	38
30-34	7	14%	15^	2	6%	*	0	0%	0	9	10%	19^
35-39	7	14%	14^	4	11%	*	0	0%	0	11	13%	22^
40-44	10	20%	20^	11	31%	22^	0	0%	0	21	24%	42
45-49	5	10%	*	0	0%	0	0	0%	0	5	6%	*
50+	5	10%	*	8	22%	2^	0	0%	0	13	15%	4

*Rates based on five case counts or less are not shown. ^Rate is unreliable due to a count <12.

Technical Notes

1. This report is compiled by the Wisconsin STI Unit and are based on STI case surveillance data collected by the Wisconsin Division of Public Health (DPH). In Wisconsin, state statutes require both laboratories and health care providers to report cases of chlamydia, gonorrhea, syphilis, chancroid, and pelvic inflammatory disease to local health departments. STI case surveillance data is automatically sent to the Wisconsin STI Unit via WEDSS (Wisconsin Electronic Disease Surveillance System).
2. This report includes cases diagnosed within the specified period. Additional cases diagnosed within the specified period may continue to be reported. Thus, this report should be considered provisional, and it supersedes all previous reports.
3. Reporting of STI cases can be incomplete. Reporting rates can be varied by disease, geographic region, and demographic groups. At any time, reported STI cases represent only part of the total number of diagnosed cases, therefore STI surveillance data likely underestimates total STI morbidity.
4. Rate is calculated based on the population data available on WISH (Wisconsin Interactive Statistics on Health) system website. For this reason, rates are only available for cisgender males and cisgender females throughout the report. In these reports, rates presented are cases per 100,000 population (2022). Rates are not calculated for categories with small numbers of cases. See [each report](#) for the rate calculation threshold.
5. In this report, cases are allocated to the derived county at the time of diagnosis. Cases from federal, state, or certain private institutions are included, and geographic region for these cases are assigned as institution.
6. Cases residing outside Wisconsin and unknown state cases are not included in this report.
7. All races are non-Hispanic ethnicity. Under the category of race, Asian includes Asian Pacific Islander. American Indian and Alaska Native is named as Native American. Unknown is either race or ethnicity is unknown.
8. Rates based on five case counts or less are not shown, and rates based on case counts less than 12 are marked as statistically unreliable.

For more information contact:

[Wisconsin STI Unit](#)

1 West Wilson Street

PO Box 2659

Madison, WI 53701-2659

Telephone: 608-266-8479