

# Using Visual Triggers to Counsel on Lead Poisoning Prevention

## Where Do You Look?

You want to look at areas where children spend most of their time. Find out where the child eats, sleeps and plays. If you need to, look at the rooms from their level (get down on your hands and knees). And look for rooms that have toys.

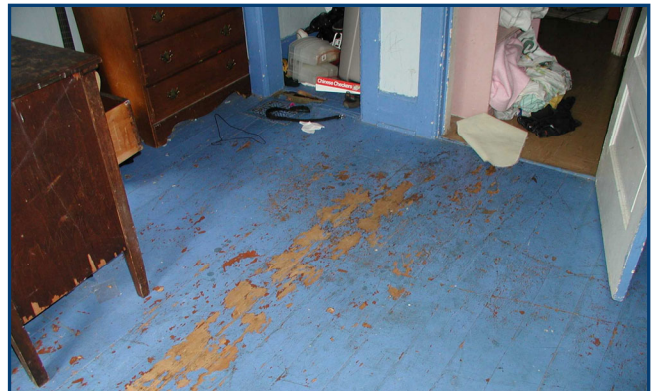
We recommend you focus on these rooms:

- Child's bedroom
- Kitchen/Dining room
- Living room
- Porch
- Play areas

## What Do You Look For?

### Friction and Impact Surfaces

Painted or varnished floors can get worn down by floor traffic. Doors that don't close properly can cause damage if they are painted or varnished. Windows being raised and lowered cause friction and create dust.



### Visible Dust Accumulation

Dust is most often found on window sills and in window wells. Also, dust may fall to the floor below the windows. Soil contaminated with lead dust can be tracked into the home. So check floors near outside entrances for lead dust.



### Porch Railings and Floors and Soil

Porches often have a lot of traffic, This can disturb the lead dust on the floors and the railings. Also, hot and humid summers combined with cold and dry winters can cause the lead-based paint to chip and peel. Remember to check for bare patches of soil that might have lead chips or dust.

To learn more, go to <https://www.dhs.wisconsin.gov/lead/index.htm> or Google "WI Lead."