

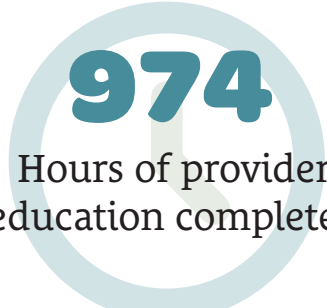
WISCONSIN CPCP CHILD PSYCHIATRY CONSULTATION PROGRAM

WI CPCP BY THE NUMBERS

The Wisconsin Child Psychiatry Consultation Program (WI CPCP) is a state- and federally funded program for primary care providers (PCPs) designed to improve mental health care for children and adolescents. This statewide program is brought to you by the Wisconsin Department of Health Services (DHS) in partnership with the Medical College of Wisconsin (MCW).

Provider Engagement | July 2021 – June 2022

 **1,507**
WI CPCP
consults to
providers

 **974**
Hours of provider
education completed

492
Providers who joined
WI CPCP this year


Services offered to primary care providers

EDUCATION

The WI CPCP offers Continuing Medical Education (CME) online education, case studies and practice application, and mental health conferences.

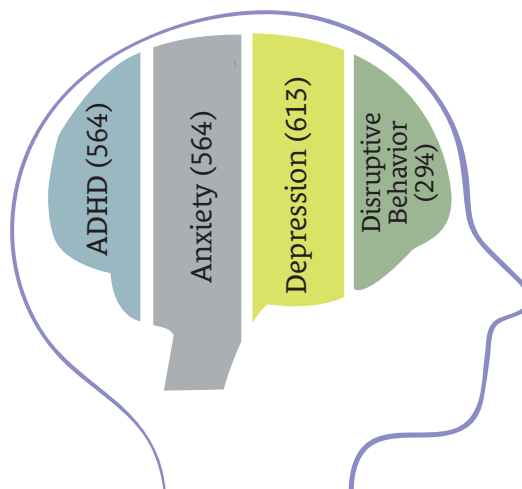
CONSULTATION

The WI CPCP team is available to answer questions relating to pediatric mental health by phone or email Monday through Friday, 8 a.m.–5 p.m.

RESOURCE COORDINATION

Resource support in ensuring timely referrals to appropriate services within local communities.

Frequent topics for which providers request consults



Top medicine-related provider questions

465 side effect profile
627 initiation of new medication
477 dosage of new medication
339 switching of medication

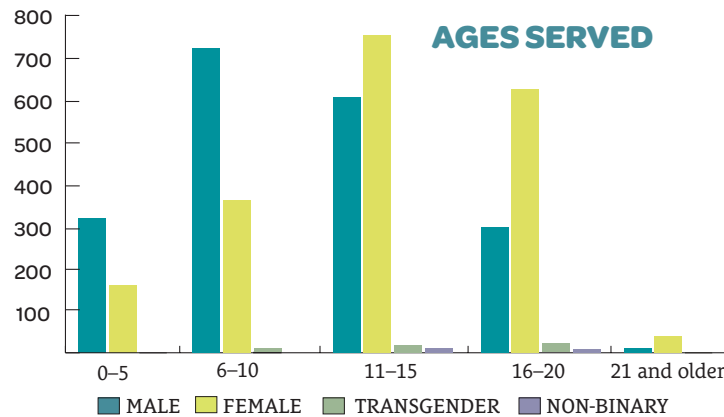
To obtain the dedicated email address and phone number for WI CPCP and to gain access to online CE modules, please visit the WI CPCP website at **WICPCP.org** and fill out the interest inquiry survey located on the “Join” tab at the top of the home page.

WI CPCP BY THE NUMBERS

Cumulative Data

7,925

Total consults
since program
inception

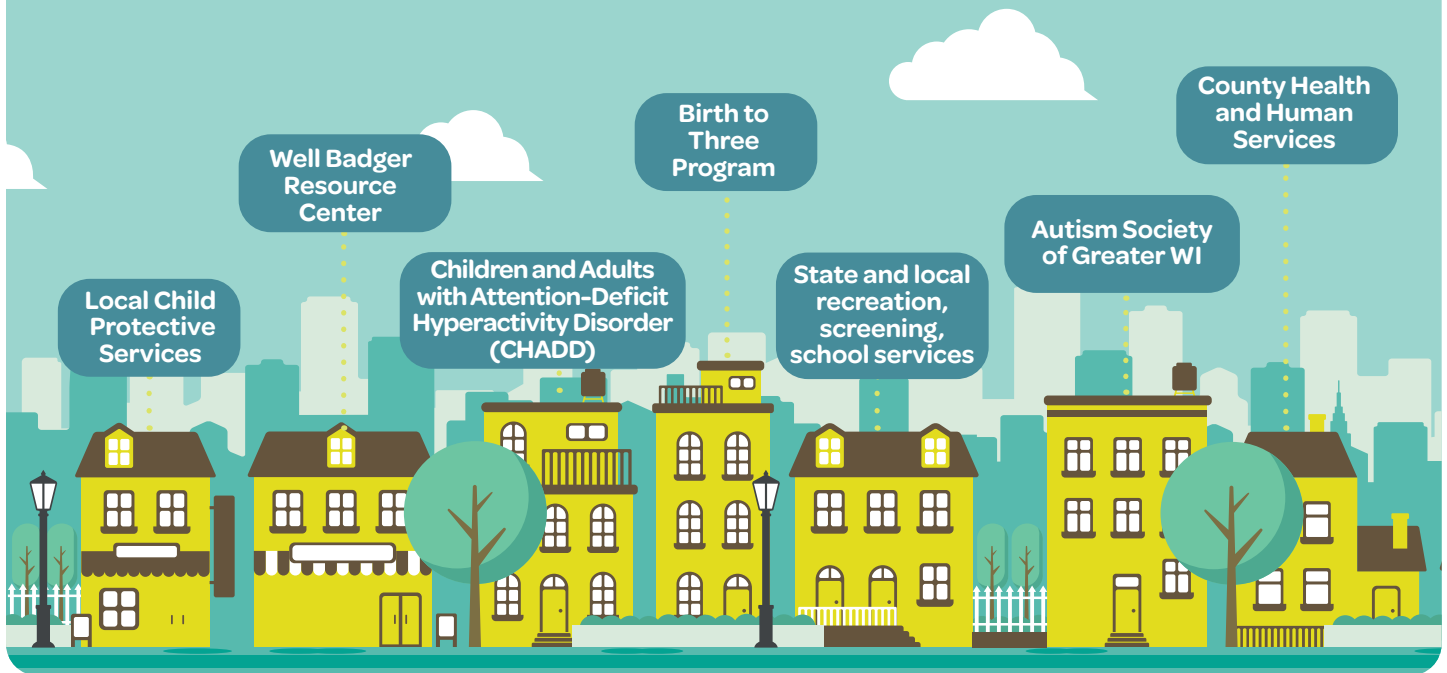


1,794

Total participating
providers



COMMUNITY RESOURCES OFTEN RECOMMENDED TO PROVIDERS



WI CPCP TEAM

Mental Health Clinicians

Robert Chayer, MD
Gabiella Hangiandreou, MD
Matt Jandrisevits, PhD
Martha Karlstad, MD
Rosa Kim, MD
Jon Lehrmann, MD
Colleen Manak, MD
Scott Sandage, DO
Nisha Shah, MD

Program Administrator

Scott Belanger

DHS Contract Administrator

Leah Ludlum

Data Evaluator

Michelle Broaddus, PhD

Program Manager

Elizabeth Nelson

Program Coordinators

Melissa Hayes
Kristen Krause
Christina Lium
Esmirna Peralta
Grace Bayer

Education Nurse

Kim Nesseth, RN



For more information on WI CPCP, please visit WICPCP.org



WISCONSIN DEPARTMENT of HEALTH SERVICES

P-01847 (12/2022)

This statewide program is brought to you by the Wisconsin Department of Health Services in partnership with the Medical College of Wisconsin.

This fact sheet is supported by Wisconsin Department of Health Services with funding from the Health Resources and Services Administration (HRSA) of the U.S. Department of Health and Human Services (HHS) as part of a 5-year cooperative agreement (Award Number 6 U4CMC32324-04-01) totaling \$2,225,000, with 0% financed with non-government. The contents are those of the author(s) and do not necessarily represent the official views of, nor an endorsement, by HRSA, HHS, or the U.S. Government.