

## WHAT IS PRAMS?

- The Wisconsin Department of Health Services is one of 48 state health departments participating in the Pregnancy Risk Assessment Monitoring System, also known as PRAMS.
- PRAMS is a confidential survey that collects information from women who have recently given birth.
- The purpose of PRAMS is to improve the health of new mothers and their babies. In Wisconsin, some babies are born healthy and others are not. We want to understand why. One way to find the answer to this question is to hear from women who have recently given birth. To do so, the Wisconsin Department of Health Services asks these women to share their experiences by completing the PRAMS survey.

## WHO CAN I CALL IF I WANT MORE INFORMATION ABOUT THE PRAMS SURVEY?

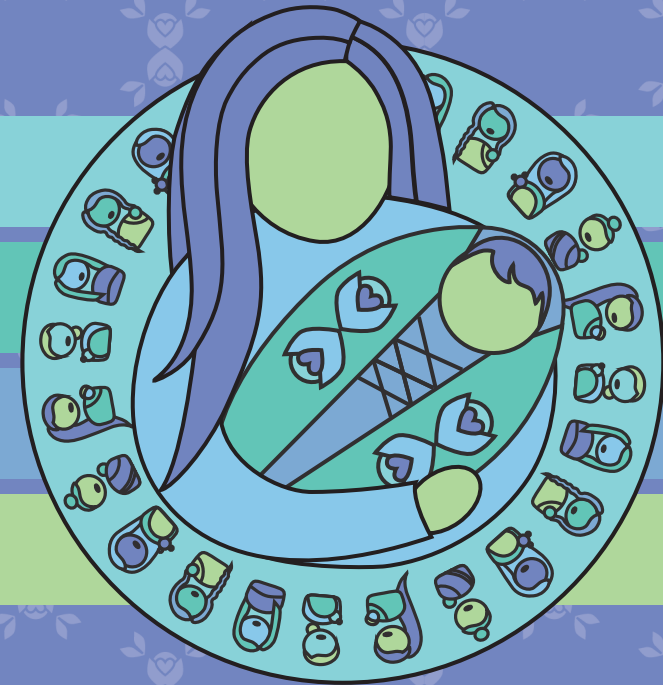
If you would like to learn more about PRAMS, call the PRAMS team at 1-866-743-9737. The call is free. Our staff speaks English and Spanish. We are ready to help.

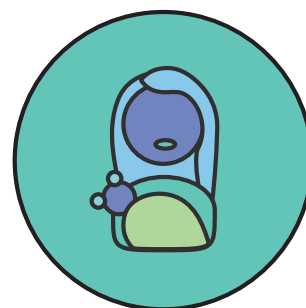
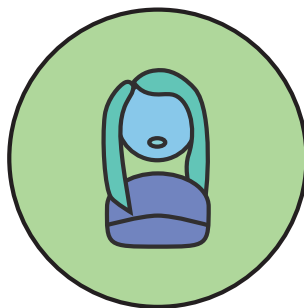
*PRAMS is a joint research project between the Wisconsin Department of Health Services and the Centers for Disease Control and Prevention.*

Thank you for your help!



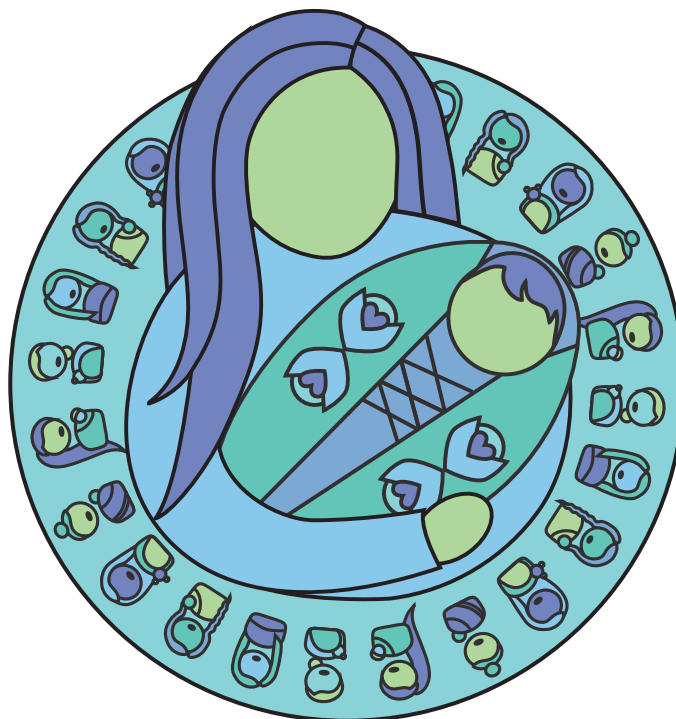
Healthy babies  
start with you!  
You can help by  
telling your story.





## WHO RECEIVES THE SURVEY?

- Each month, the Department of Health Services sends the survey to about 200 women who recently gave birth, and who were chosen by chance.
- In 2020, we are surveying all Native moms who give birth in Wisconsin, in partnership with the Great Lakes Inter-Tribal Epidemiology Center. The Great Lakes Inter-Tribal Council's Board of Directors (Tribal Chairs) passed a resolution in support of this project. We are hoping to better understand experiences of Native moms and their families, so we can support a public health system that helps everyone reach their health potential.
- If you are selected, the survey will be mailed to you and you will be asked to fill it out. All responses will be returned to the Department of Health Services and will be kept confidential, to the extent permitted by law.



Your voice is important to this effort.

## WHY IS THE PRAMS SURVEY IMPORTANT?

- Many things in a woman's life affect her pregnancy. Because every pregnancy is different, the information gathered through the survey will help us get a more complete picture of mothers and babies in Wisconsin.
- The answers from the women who return a survey are used to improve the health of all pregnant women and their babies. The answers from Native moms will also be shared with the Great Lakes Inter-Tribal Epidemiology Center to assist Tribes in their planning and health promotion efforts.



WISCONSIN  
**PRAMS**  
PREGNANCY RISK ASSESSMENT MONITORING SYSTEM

