



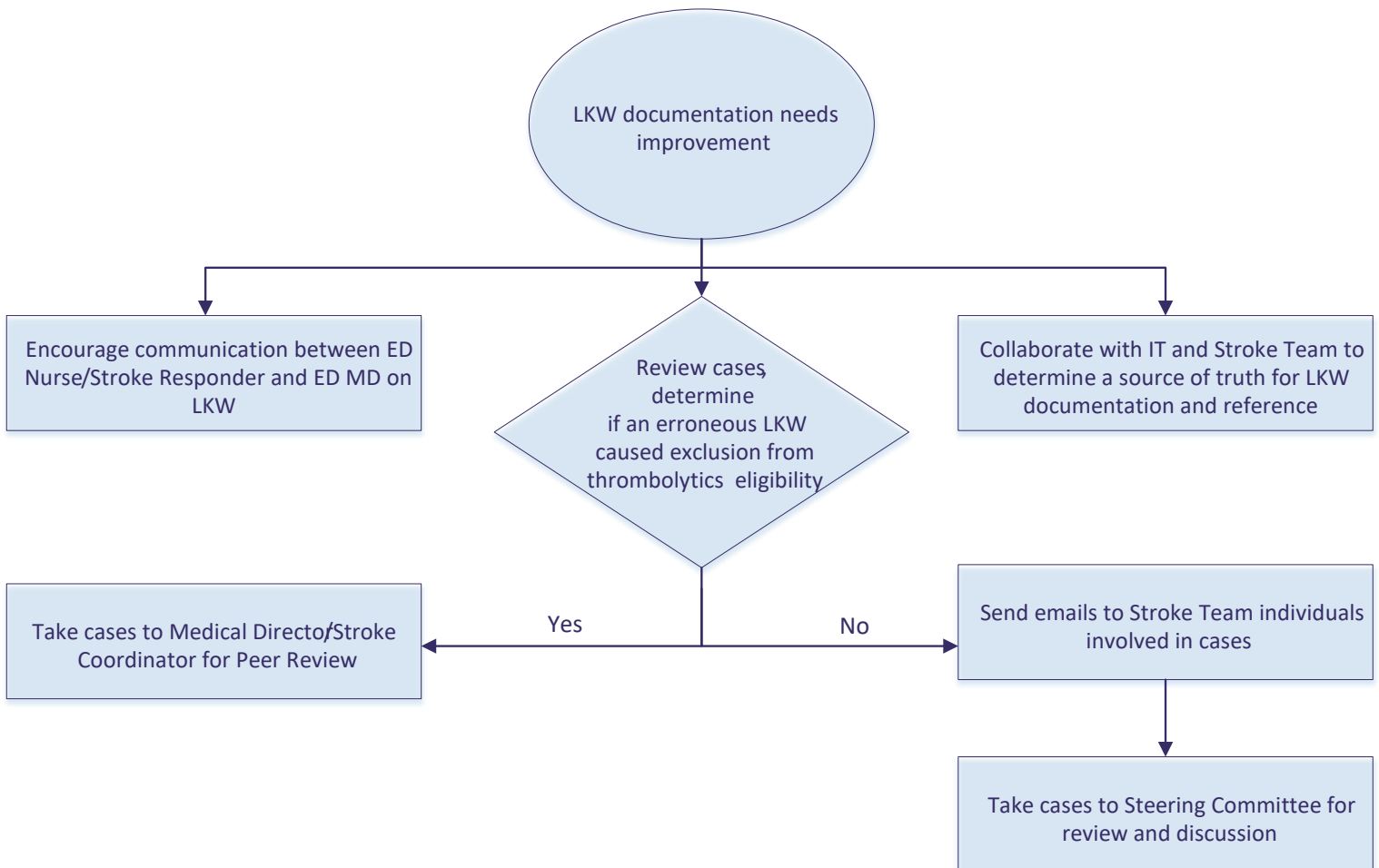
dhs.wi.gov/Coverdell/index.htm

Last known well (LKW) is the date and time at which the patient was last known to be without the signs and symptoms of the current stroke or at their baseline.

Correctly identifying a patient's **LKW time (LKWT)** is critical for determining their eligibility for time-sensitive acute ischemic stroke thrombolytic treatments. Accurately abstracting LKW can be very difficult, as there are often multiple times documented and coding instructions are complex.

To make abstracting LKW easier, **always document the LKWT used to determine thrombolytic treatment**, as this is the intent of the question.

There are steps you can take when you find documentation of LKW needs improvement in your hospital. Below is a flow chart that can help you in your efforts. As hospitals vary in size and stroke team structure, you may need to substitute your hospital's specific Stroke Team members' titles. The most important aspect in any systems change work is open communication.



References:

- Get with the Guidelines® - Stroke PMT® Abstraction Guidelines Updated February 2021
- The Joint Commission <https://manual.jointcommission.org/Manual/Questions/UserQuestionId03Stk101144>

