



WISCONSIN DEPARTMENT
of HEALTH SERVICES

P-03488 (07/2023)

Assessing Policies and Programs for Health Equity

Health Equity Assessment and Resource Team
Office of Policy and Practice Alignment

To protect and promote the health and safety of the people of Wisconsin

Welcome



Land Acknowledgement

We recognize that we are seated on the ancestral lands of Wisconsin's First Nations. We reflect on the history that has brought us to this moment and pay respect to the souls, elders, fathers and mothers, sons and daughters, that cared for this land during the millennia that preceded Euro-American contact.

Housekeeping

- View this session recording in email
- Review past recorded sessions and slides on the [DHS training website](#).
- Drop questions in the chat, Q/A at end of presentation.
- Complete brief survey at the end of session.

Learning Objectives

- Review key terms for health equity.
- Introduce criteria for reviewing policies and programs for health equity.
- Familiarize participants with County Health Rankings and Roadmap's What Works for Health webpage.

Health Equity

"The state in which *everyone* has a fair and just opportunity to attain their highest level of health"

Does the policy or program...

- ★ Address historical and contemporary injustices?
- ★ Overcome economic, social, and other obstacles to health and health care?
- ★ Eliminate preventable health disparities?

Health Disparities

"Preventable differences in the burden of disease, injury, violence, or opportunities to achieve optimal health that are experienced by populations that have been disadvantaged by their social or economic status, geographic location, and environment"

Populations Experiencing Health Disparities

Include but are not limited to...

- Individuals and families living in poverty
- Racial and ethnic minorities
- Rural communities
- LGBTQIA+ community

- Food-Insecure communities
- Disabled communities
- Unhoused populations
- Refugee communities

Streams

- Upstream: legislation, institutional policy
- Midstream: direct support, referrals, programs
- Downstream: medical intervention, clinical care

Upstream

Inform policy and systems change.

Midstream

Collect, analyze, and interpret data.

Promote physical and behavioral health.

Support hygiene and sanitation.

Prevent the spread of communicable diseases.

Prepare for emergencies.

Downstream

Respond to emergencies.

Provide treatment.

Seattle and King County Public Health

Review

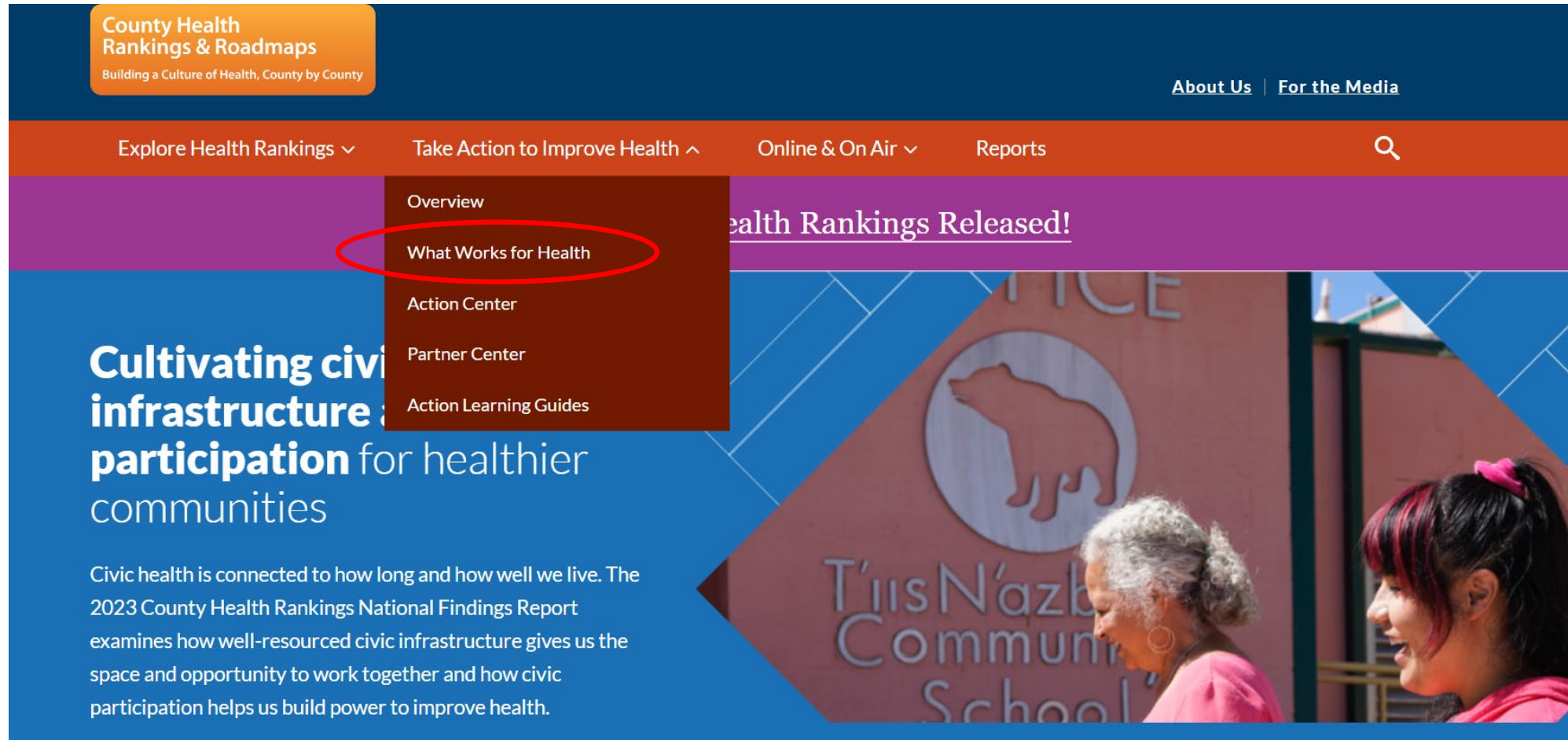
- What are the three "rule of thumb" criteria to assess if a policy or program is working towards equity?
- What groups experience health disparities, and how should they be identified?
- What are the levels on which we impact health disparities, and what are the similarities and differences among them?

County Health Rankings and Roadmaps

Poll Questions

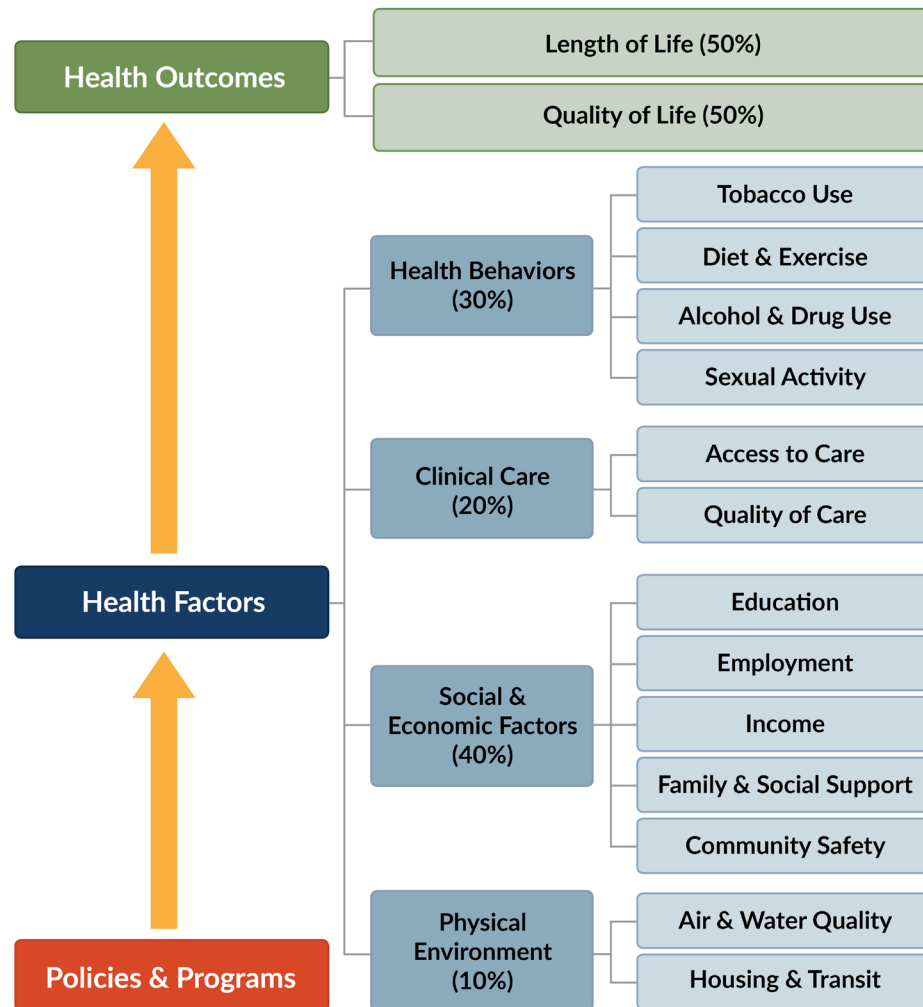
1. Are you familiar with County Health Rankings & Roadmaps (CHRR)?
2. Are you familiar with What Works For Health (WWFH)?

Take Action to Improve Health



<https://www.countyhealthrankings.org/take-action-to-improve-health/what-works-for-health>

CHRR Model for Population Health



County Health Rankings model © 2014 UWPHI

Background

- Strategies are rated on their effectiveness to affect health through four domains.
- "Strategies focused on specific diseases or conditions, treatment or other clinical protocol, and federal funding initiatives are generally not included in What Works for Health"

What Works for Health

419 Strategies Organized by...

Topic

- Access to care (34)
- Community safety (57)
- Diet and exercise (76)
 - Education (49)
 - Employment (19)
- Housing and transit (39)

Decision-Maker

- Government (320)
- Non-profits (173)
- Public health (106)
 - Healthcare (120)
- Community members (78)
- Community development (55)
 - Business (110)

Evidence Rating

- Scientifically supported (168)
- Some evidence (132)
 - Expert opinion (74)
- Insufficient evidence (27)
 - Mixed evidence (11)
 - Evidence of ineffectiveness (6)

How Are Strategies Ranked?

Each strategy is assigned an evidence rating and a disparity rating.

Evidence Ratings

1. Scientifically Supported
2. Some Evidence
3. Expert Opinion
4. Insufficient Evidence
5. Mixed Evidence
6. Evidence of Ineffectiveness

Disparity Ratings

1. Likely to decrease disparities
2. No impact on disparities likely
3. Likely to increase disparities

Included with Each Strategy

- Expected and potential benefits
- Rating on effectiveness with citations
- Impact on disparities
- Implementation examples
- Implementation resources
- Footnotes

Let's Take an Example

Evidence Rating

Scientifically Supported



Strategies with this rating are most likely to make a difference. These strategies have been tested in many robust studies with consistently positive results.

Health Factors

 [Housing and Transit](#)

Decision Makers


[Government](#)

[Public Health](#)

[Community Development](#)

Healthy home environment assessments

 [Print this strategy.](#)

 [Save this strategy.](#)

Healthy home environment assessments engage home visitors, often community health workers (CHWs), similarly trained asthma outreach workers, other professionals, paraprofessionals, or volunteers to assess and reduce environmental health risks within the home^{1,2}. Programs typically focus on improving asthma management via low cost changes such as improved ventilation, integrated pest management (IPM), and other forms of allergen control. Programs may also provide low emission vacuums, allergen-impermeable bedding covers, air filters, cleaning supplies, and supplies for roach abatement^{3,4}.

Equity Considerations

What partnerships can healthy home environment assessment programs build with community organizations and social service agencies to reach households that can benefit the most?

What financial support is available in your community for households with low incomes that receive assessments and need expensive repairs to create a healthy home? What additional assistance and follow-up support can programs provide for families after initial visits?

How can programs hire community health workers (CHWs) from the communities that are most in need of assistance to build trust among participants through cultural understanding and possible shared language?

Resources

- [What Works for Health: Shortcut](#)
- [What Works for Health: Equity Analysis](#)
- [HEALTH DISPARITIES Overarching Focus Area \(wche.org\)](#)
- [Searching the Evidence Guidelines: CCHR](#)
- [Foundational Practices for Health Equity: A Learning and Action Tool for Public Health Organizations](#)
- [Equitable Enforcement to Achieve Health Equity \(changelabsolutions.org\)](#)
- [Advancing Racial Equity and Transforming Government: A Resource Guide to Put Ideas into Action \(GARE\)](#)

Questions?

Series Renewal

Thank You!