



# Introduction to Governmental Public Health in Wisconsin

**Public Health 101: Governmental Public Health Structures  
and Resources**

Benjamin Johnson  
Health Equity Program Specialist  
Office of Policy and Practice Alignment





# Objectives

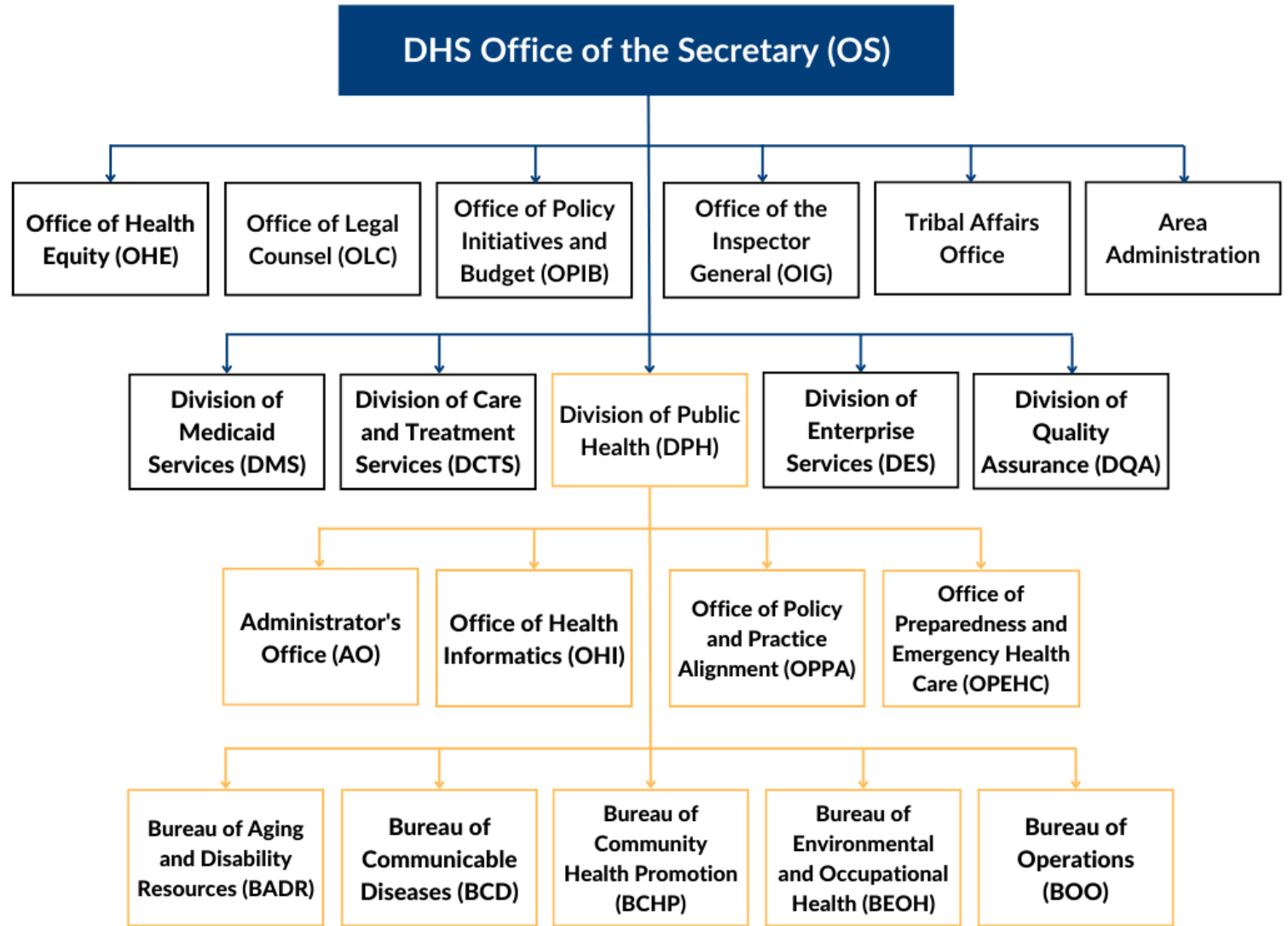
- Review Wisconsin's governmental public health structures
- Provide helpful resources from the Division of Public Health



# In Wisconsin...

- The **Department of Health Services** is the lead agency for public health and maintains the public health system.
- **Local boards of health** are the policymaking bodies for local health departments.
- **Local health departments** are responsible for the public health services in their jurisdiction.

# Department of Health Services (DHS)





# Division of Public Health (DPH)

## Bureaus

- Bureau of Aging and Disability Resources (BADR)
- Bureau of Communicable Diseases (BCD)
- Bureau of Environmental and Occupational Health (BEOH)
- Bureau of Community Health Promotion (BCHP)
- Bureau of Operations (BOO)



# Division of Public Health (DPH)

## Offices

- Office of Policy and Practice Alignment (OPPA)
- Office of Health Informatics (OHI)
- Office of Preparedness and Emergency Care (OPEC)



# Sections





# For Example

**Within the  
BEOH are...**

- Radiation Emergency Unit
- Lead and Asbestos Section
- Hazard Assessment Section
- Environmental Epidemiology and Surveillance Section





# Local Public Health

Click on the following links to view a list of Local Public Health contacts.



# Public Health Regions





# Regional Office Contact Information

- [Northeastern Regional Office](#)
- [Northern Regional Office](#)
- [Southeastern Regional Office](#)
- [Southern Regional Office](#)
- [Western Regional Office](#)



# Local Public Health

Boards of health

Local public health register







# Knowledge Check!

# Tribal Nations in Wisconsin





## **Tribal Affairs Office**

Tribal Affairs Office ([TAO](#)) works with tribal governments to obtain funding for services to help their members lead healthy lives.



# Questions?

Thank you!

Email:

Riley Reyes, [hannah.rileyreyes@dhs.wisconsin.gov](mailto:hannah.rileyreyes@dhs.wisconsin.gov)

Christie Reese, [christie.reese@dhs.wisconsin.gov](mailto:christie.reese@dhs.wisconsin.gov)

