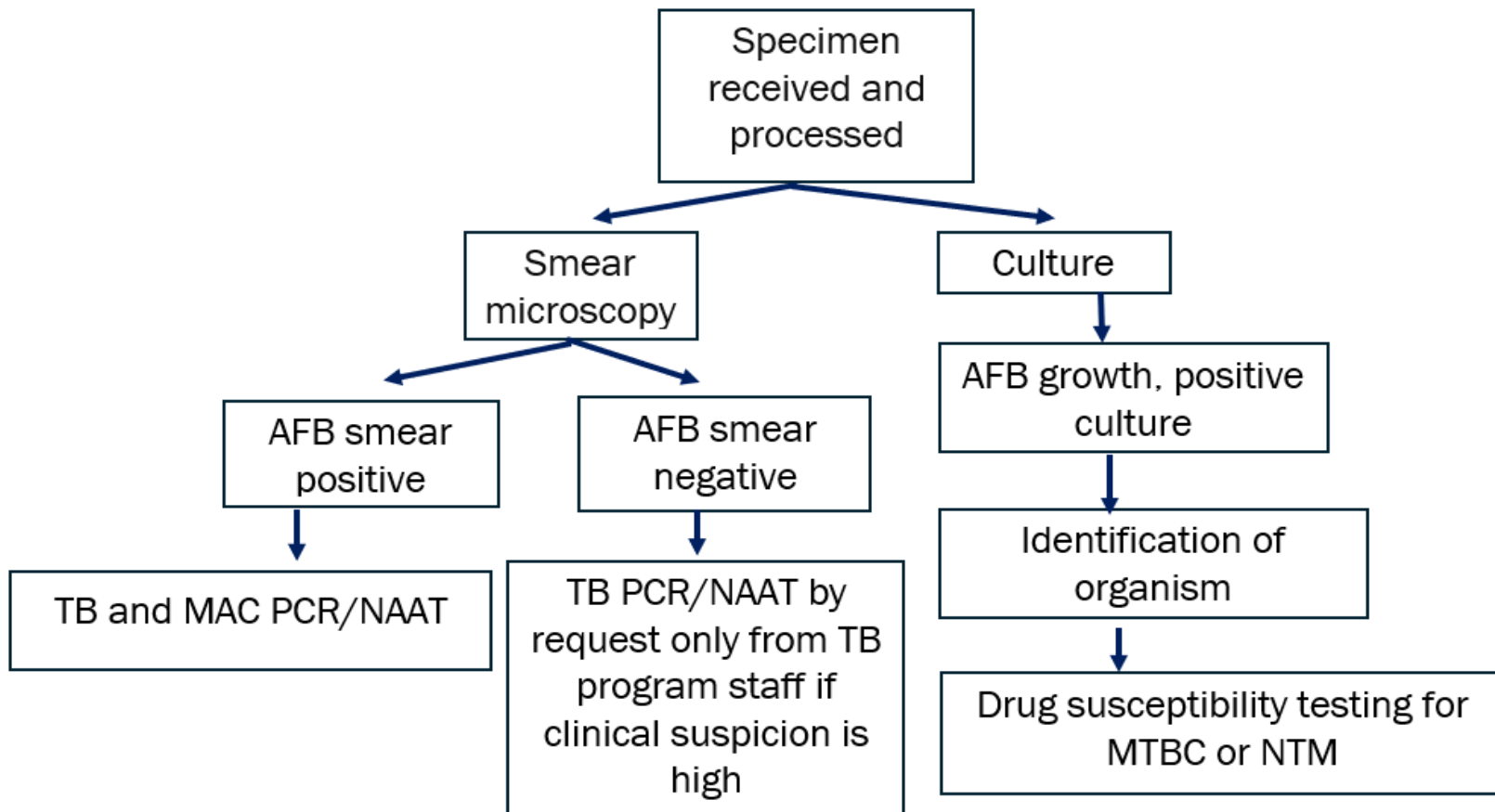


# Tuberculosis (TB) Lab Results Reference for Nurses

Testing algorithm at Wisconsin State Laboratory of Hygiene (WSLH)



## Interpretation of AFB Smear, TB PCR, and Culture Results

AFB smear	Some type of acid fast bacilli (AFB) were seen through the microscope (TB or Non-Tuberculous Mycobacterium (NTM)).
TB PCR/ NAAT	TB DNA was detected in the sample. This confirms active TB disease.
Culture	TB is alive and growing in the sample. This confirms active TB disease that is viable. This is the gold standard for TB diagnosis.

