



Tick Surveillance Report

Epidemiological Week: 13

Collection Date: 03/30–03/31/2026

Division of Public Health
Bureau of Communicable Disease
Vectorborne Disease Unit

P-03757 (04/2026)



WISCONSIN DEPARTMENT
of HEALTH SERVICES



About

The Wisconsin Department of Health Services conducts **field collection of ticks** routinely during the tick season and this report summarizes the ticks collected. Sites in three counties serve as sentinel sites and tick collection occurs approximately every other week throughout the tick season, typically March through November. Field collection activities highlighted in this report focus on **blacklegged ticks (also known as deer ticks and *Ixodes scapularis*)** because this species of ticks is the most important vector of human tickborne infections in Wisconsin.

Field collection and tick images submitted through the **DHS Tick Identification Service** are one of several indicators DHS uses to monitor tick activity and trends. This data may not reflect the threat of encountering a tick in all areas of the state. Ticks are most active in Wisconsin from spring through fall, but you should use caution throughout the year and [take steps to prevent tick bites](#).



Field Collection Activity Tracker

Overall blacklegged tick activity is based on the average number of each tick life stage found while conducting tick surveillance. Usually, only nymphs and adult female ticks can spread illness.

	Adults	Nymphs	Larvae
Life stage			
Current Activity	Moderate	Minimal	Minimal
Trajectory	Increasing 	Stable 	Stable

Activity Scale

Minimal

Low

Moderate

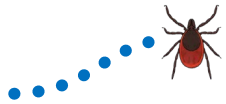
High

Very High

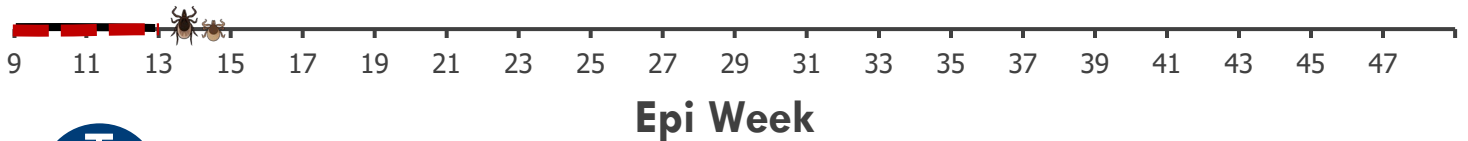


Blacklegged Tick Activity Tracker

- **Adult**
- **Nymph**
- - - **Larvae**



This tracker shows the seasonal activity pattern of the blacklegged tick using data collected through tick surveillance.



Field Collection Data by Sentinel Site, 2026

DHS conducts bi-weekly sampling of host-seeking ticks at three sentinel sites in Wisconsin. During each visit, a white denim tick drag is pulled through vegetation along a 750 meter transect and drags are checked for ticks at 15 meter intervals. All host-seeking ticks found on drags are collected and stored in 70% ethanol.



Waupaca County



Lincoln County



Iowa County

Data shows total number of each life stage of the blacklegged tick found during each visit. Adult blacklegged ticks are displayed as **Female** and **Male**.

	Blacklegged tick				Other ticks
County	Larva	Nymph	Adult Female	Adult Male	
Iowa	0	0	10	12	1*
Waupaca	0	0	10	14	0
Lincoln	0	0	2	0	0
Average	0	0	7.33	8.67	0

Notes: * = male *Dermacentor variabilis* (wood tick).



Trends by Sentinel Site County, 2021-2026

Total number of blacklegged ticks, collected on 750 meters during each visit to three sentinel surveillance sites in odd-numbered CDC epidemiological weeks (Epi week 9, 11, 13, 15, 17...).

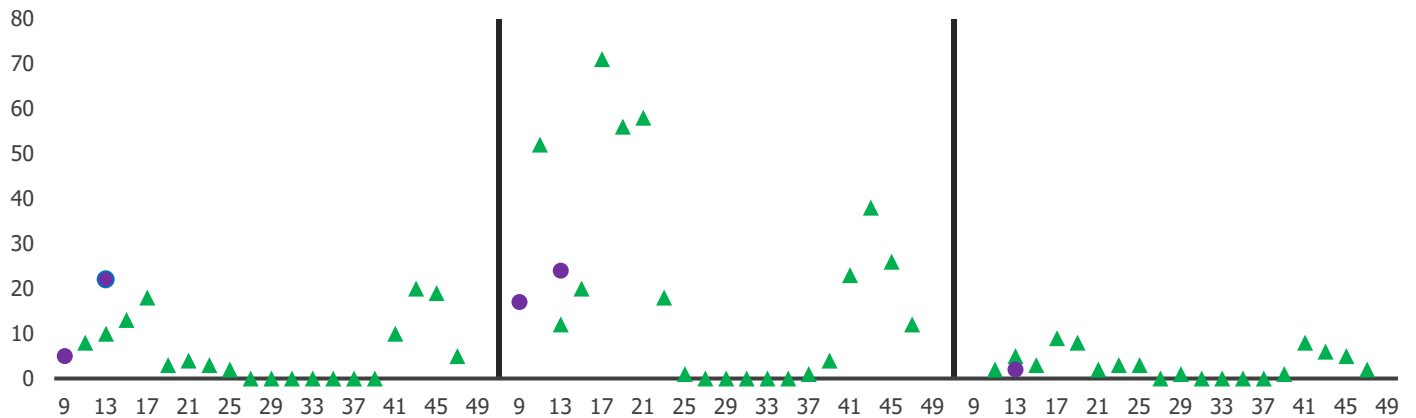
● 2026 ▲ 2025 ■ 2021-2024 Range

Iowa County

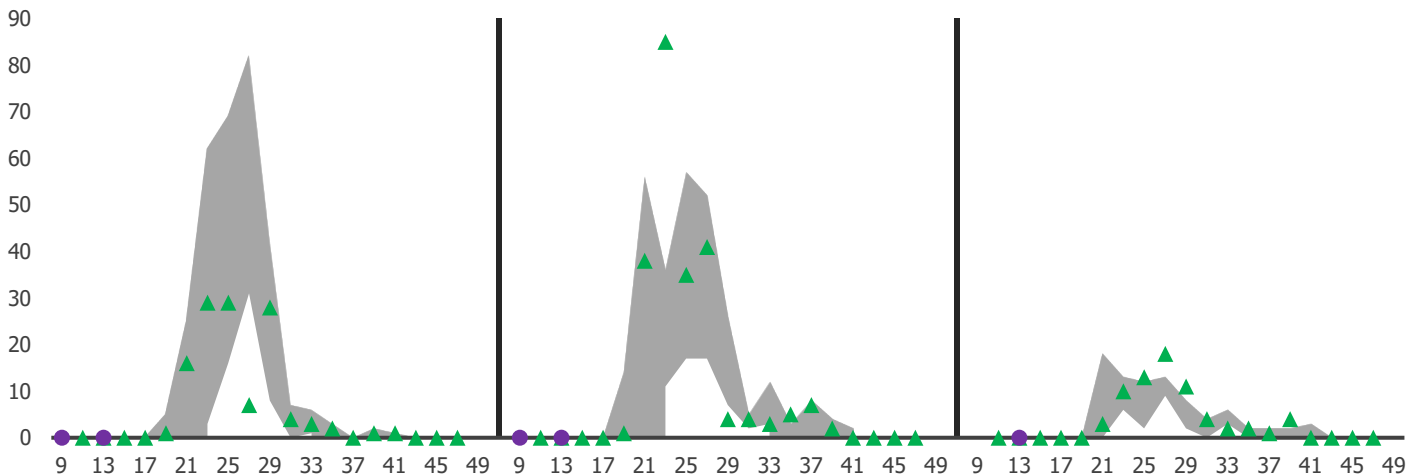
Waupaca County

Lincoln County

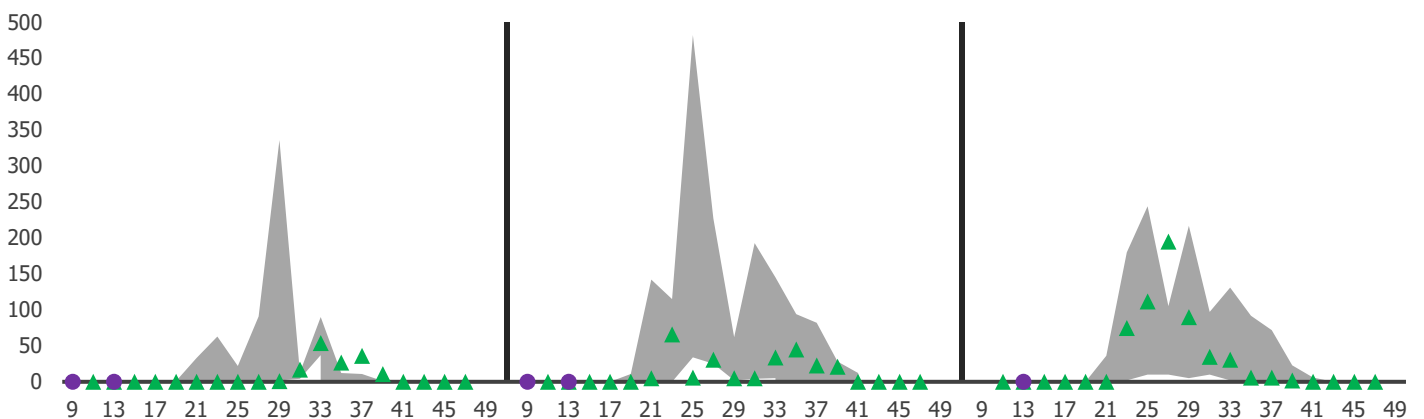
Total number of **adult** blacklegged ticks by epi week



Total number of **nymphal** blacklegged ticks by epi week



Total number of **larval** blacklegged ticks by epi week





Tick Identification Service

The graph shows the total number of submissions to the Wisconsin Department of Health Services Tick Identification Service since Epidemiological Week 1 (January 1– 4). Data collected through the Tick Identification Service is shown below for submissions from users in Wisconsin only.

