

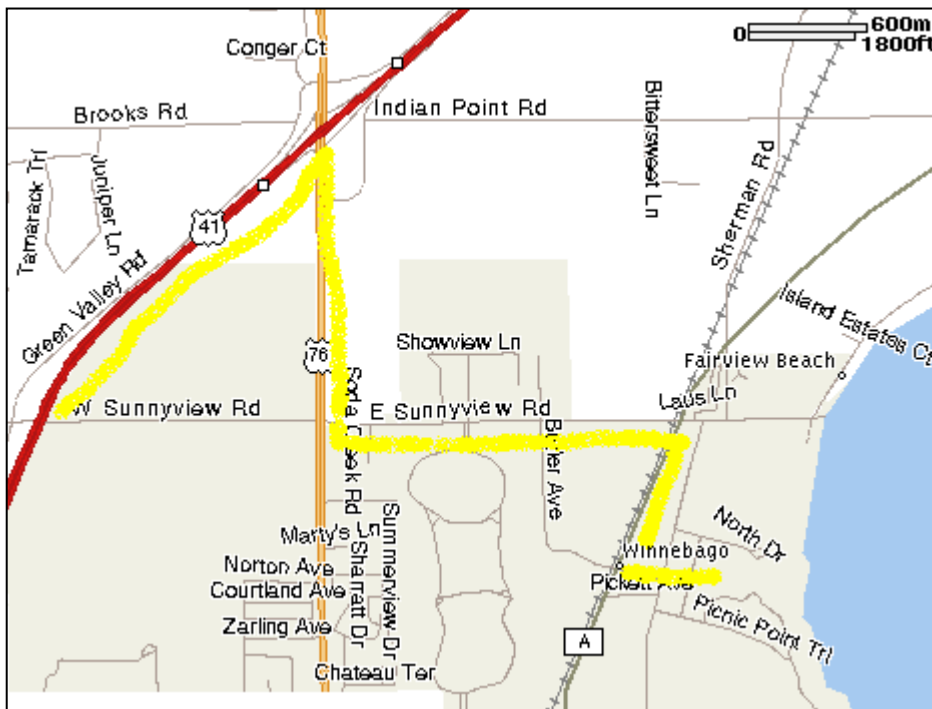
DIRECTIONS TO WMHI

FROM GREEN BAY

Go south on Hwy. 41 to the first Oshkosh exit, which is the Hwy. 76 (Jackson Street—formerly Hwy. 45) exit. Take a left off the exit ramp. Proceed south on Hwy. 76 to Sunnyview Road (County Hwy. Y). Turn left onto Sunnyview Road and follow east to the stop sign. Turn right onto County Hwy. A and follow south to Butler Avenue. Turn left onto Butler Avenue and you will see the WMHI grounds.

FROM MADISON

Take Hwy. 151 North to Hwy. 26 North. Go north on Hwy. 26 through Rosendale to Hwy. 41. Go north on Hwy. 41 approximately 12 miles, over the Butte des Morts Bridge. Exit on Hwy. 76 (Jackson Street—formerly Hwy. 45), which is the second exit after going over the Butte des Morts Bridge. Take a right off the exit ramp. Proceed south on Hwy. 76 to Sunnyview Road (County Hwy. Y). Turn left onto Sunnyview Road and follow east to the stop sign. Turn right onto County Hwy. A and follow south to Butler Avenue. Turn left onto Butler Avenue and you will see the WMHI grounds.



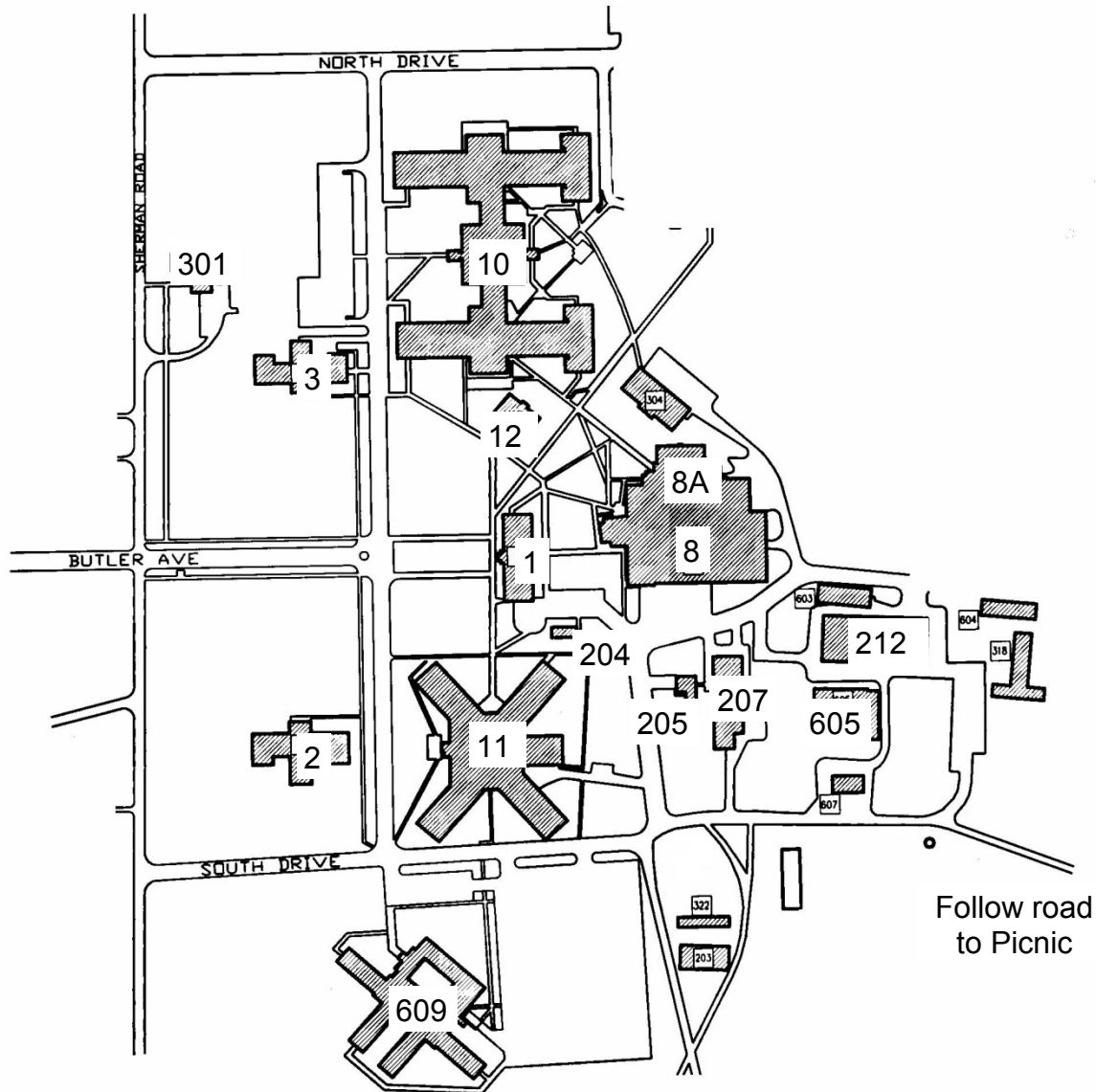
FROM MILWAUKEE

Go north on Hwy. 41 until you reach Oshkosh. Exit on Hwy. 76 (Jackson Street--formerly Hwy. 45), which is the second exit after going over the Butte des Morts Bridge. Take a right off the exit ramp. Proceed south on Hwy. 76 to Sunnyview Road (County Hwy. Y). Turn left onto Sunnyview Road and follow east to the stop sign. Turn right onto County Hwy. A and follow south to Butler Avenue. Turn left onto Butler Avenue and you will see the WMHI grounds.

After Arriving at WMHI

When you arrive on grounds, there is a red visitor's telephone out in front of the Administration Building on Treffert Drive. Please feel free to use it if you need assistance finding a certain building or person.

Winnebago Mental Health Institute



Number	Building Name
1	Administration Building
2	South Cottage
	• Staff Development
	• Wee Winni Childcare Center
3	North Cottage
	• Log Cabin Gift Shop
	• Log Cabin Workshop
	• Student Housing
	• Social Recovery Center
8	Service Building
	• Canteen
	• Library
	• Dietary Service
	• Stores
8A	Gymnasium
10	Gordon Hall
11	Sherman Hall
12	Chapel
204	Buildings & Grounds Office
205	Credit Union
207	Power Plant
212	Maintenance
301	Museum
605	Greenhouse
609	Petersik Hall

