

2008

Births To Teens

In Wisconsin



Wisconsin Department of Health Services
Division of Public Health
Office of Health Informatics

Births To Teens In Wisconsin

2008

November 2009

*Wisconsin Department of Health Services
Division of Public Health
Office of Health Informatics*

Foreword

The Department of Health Services is mandated by section 69.03 (9), Wisconsin Statutes, to prepare annual reports on vital statistics. *Births to Teens in Wisconsin, 2008* includes relevant information from the annual *Wisconsin Births and Infant Deaths* report, as well as additional information on teen births not included in that report. This publication was prepared by the Office of Health Informatics (formerly the Bureau of Health Information and Policy), Division of Public Health, Wisconsin Department of Health Services.

The findings in this report were compiled by Laura Ninneman in the Vital Records Section of the Office of Health Informatics. Patricia Nametz edited the report. Draft review was provided by Murray L. Katcher, M.D., Ph.D., Bureau of Community Health Promotion, Division of Public Health. The report was prepared under the supervision of John Kiesow, State Registrar, Vital Records Section, and Jane Kraus, Supervisor, Registration and Statistics Unit.

Additional health-related statistical information for Wisconsin is available through the Internet on the Department of Health Services site, at <http://dhs.wisconsin.gov/stats/>. Wisconsin Interactive Statistics on Health (WISH) is an online data query system, located at <http://dhs.wisconsin.gov/wish>, which includes birth data for multiple years and geographic areas in Wisconsin.

Comments, suggestions and requests for further information may be addressed to:

Division of Public Health
Office of Health Informatics
P.O. Box 309
Madison, WI 53701-0309
Telephone: (608) 266-2838
E-mail: laura.ninneman@dhs.wisconsin.gov

Suggested citation:

Wisconsin Department of Health Services, Division of Public Health, Office of Health Informatics. *Births to Teens in Wisconsin, 2008* (P-45365-08). November 2009.

Contents

Foreword	ii
Introduction	1
Key Findings	2

Statewide Information

Table 1. Births to Teens by Age Group	3
Table 2a. Age-Specific Teen Birth Rates	4
Table 2b. Teen Birth Rates	4
Table 3. Births to Teens by Age Group and Race/Ethnicity	5
Table 4. Teen Births and Rates by Race/Ethnicity	7
Table 5. Births to Teens by Marital Status.....	9
Table 6. Births to Teens Who Received First-Trimester Prenatal Care by Age Group	9
Table 7. Second Order or Higher Births to Teens by Age Group.....	10
Table 8. Births to Teens by Age Group and Selected Characteristics	11
Table 9. Fetal, Neonatal, and Infant Deaths by Teen Age Group.....	12

Local Information

Table 10. Births to Teens by Age Group and County of Residence	13
Table 11. Teen Birth Rates and Estimated Pregnancy Rates by Age Group and County.....	15
Table 12. Births to Teens by Age Group, Race of Mother and County of Residence	17
Table 13. Births to Unmarried Teens by Age Group and County of Residence.....	19
Table 14. Births by Teen Age Group and Selected Places of Residence.....	21
Table 15. Teen Birth Rates by Selected Cities of Residence.....	22

Trend Information

Table 16. Births to Teens by County of Residence.....	23
---	----

Definitions, Explanations of Terms, and Limitations of the Data	25
--	----

Introduction

This report presents information on Wisconsin teen births, based primarily on data collected from the confidential portion of the birth record. It presents data for 2008 and other relevant years in two main sections: "Statewide Information" and "Local Information."

Data files used in the report are the resident birth certificate file, the matched infant birth-death file, the fetal death file, and the reported induced terminations of pregnancy publication. All data refer to Wisconsin residents unless otherwise noted.

All the information is presented according to place of residence. This means that events have been assigned to the area where the person lives (usually legal residence) regardless of where the events occurred. For births, the reference is to the residence of the mother. For deaths, the reference is to the residence of the infant.

Key Findings

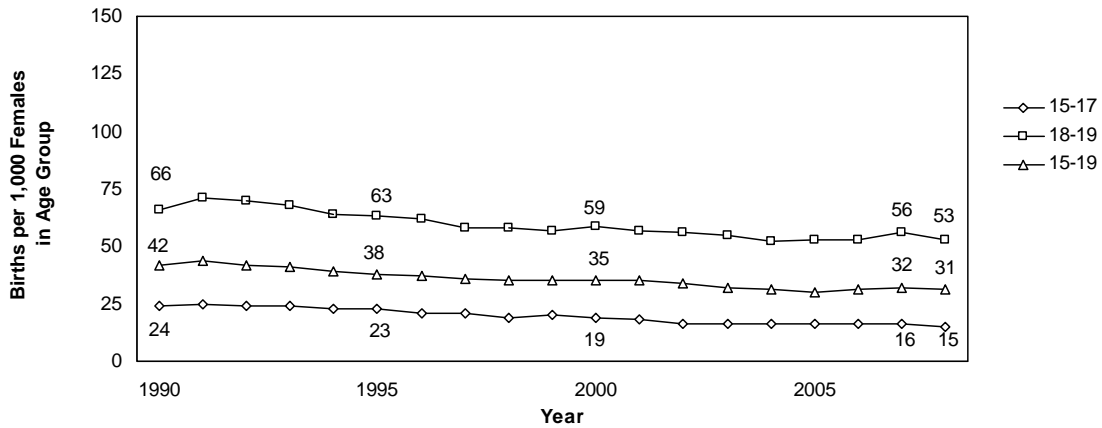
- In 2008, there were 6,096 births to Wisconsin teens (mothers less than 20 years of age), a decrease from 6,320 teen births in 2007.
- The estimated pregnancy rate among Wisconsin teens in 2008 was 38.5 pregnancies per 1,000 females aged 15-19, lower than the 2007 rate (39.7). (This rate is calculated by adding births, reported fetal deaths, and reported induced terminations of pregnancy among females under 20 years of age, then dividing by the number of females aged 15-19.)
- The 2008 Wisconsin teen birth rate was 30.9 births per 1,000 females aged 15-19, lower than the 2007 rate (32.0). (This rate excludes births to girls under 15 years of age.) In 2006, the U.S. teen birth rate was 41.9.
- Over the past decade, the overall teen birth rate in Wisconsin (births per 1,000 females aged 15-19) declined from 34.5 in 1998 to 30.9 in 2008. The largest decline in the teen birth rate occurred among black/African American teens: from 122.7 per 1,000 in 1998 to 95.9 per 1,000 in 2008. Among white teens, the rate decreased from 23.4 to 18.5 per 1,000. Among American Indian teens, the rate was 77.4 per 1,000 in 1998 and 98.5 per 1,000 in 2008. The teen birth rate among Hispanic/Latina teens was 85.4 per 1,000 in 1998 and 91.4 per 1,000 in 2008.
- In 2008, teen births represented 8 percent of births overall. By race/ethnicity, teen births represented 6 percent of births to whites, 22 percent of births to blacks/African Americans, 20 percent of births to American Indians, 15 percent of births to Hispanics, 17 percent of births to Laotians or Hmong, and 3 percent of births to “other Asians.”
- Eighty-nine percent of births to teens in 2008 were nonmarital, the same percentage as in 2007.
- The proportion of teens giving birth who reported smoking during pregnancy was 21 percent in 2008, the same percentage as in 2007. Teens remain more likely to smoke during pregnancy than Wisconsin women overall (14%).
- In general, babies born to teens are more likely to die in infancy. In 2008, the infant mortality rate was 10.8 per 1,000 births to teens aged 15-19, compared with 6.6 per 1,000 births to mothers aged 20 and older. (In 2007, the rates were 10.9 per 1,000 births to teens and 6.0 per 1,000 births to mothers 20+.)
- The proportion of teens who received first-trimester prenatal care was 66 percent in 2008, a slight drop from 2007 (67%). Among all women who gave birth in 2008, 82 percent received first-trimester prenatal care.
- In 2008, 549 infants born to Wisconsin teens were low birthweight; that is, they weighed less than 2,500 grams (about 5.5 pounds) at birth. This number represented 9.0 percent of all teen births (compared to 9.7 percent in 2007). The low birthweight percentage for all Wisconsin births in 2008 was 7.0 percent.
- Among low birthweight infants born to teens, 99 were born at very low birthweight (less than 1,500 grams or about 3.3 pounds) and were thus at the highest risk for health problems. The very low birthweight percentage was 1.6 percent of all teen births (compared to 1.2 percent of all births).

Table 1. Births to Teens by Age Group, Wisconsin, 1975-2008

Year	Number of Teen Births		Total Births	Number of Teen Births		Percent of Teen Births		Percent of All Births	Percent of Teen Births	Percent of All Births
	<15	15-17		18-19	<20	<15	15-17			
1975	103	3,256	3,359	6,279	9,638	1.1%	33.8%	5.2%	65.1%	14.8%
1976	125	2,970	3,095	6,111	9,206	1.4	32.3	4.8	66.4	14.2
1977	103	2,920	3,023	6,094	9,117	1.1	32.0	4.4	66.8	13.3
1978	72	2,865	2,937	5,940	8,877	0.8	32.3	4.3	66.9	12.9
1979	120	2,688	2,808	6,473	9,281	1.3	28.9	3.8	69.7	12.7
1980	93	2,741	2,834	6,379	9,213	1.0	29.8	3.8	69.2	12.3
1981	94	2,655	2,749	6,029	8,778	1.1	30.2	3.7	68.7	11.8
1982	91	2,452	2,543	5,659	8,202	1.1	29.9	3.4	69.0	11.0
1983	98	2,397	2,495	5,258	7,753	1.3	30.9	3.4	67.8	10.7
1984	98	2,305	2,403	4,973	7,376	1.3	31.2	3.3	67.4	10.1
1985	123	2,389	2,512	4,976	7,488	1.6	31.9	3.4	66.4	10.2
1986	121	2,340	2,461	4,679	7,140	1.7	32.8	3.4	65.5	9.9
1987	114	2,369	2,483	4,425	6,908	1.7	34.3	3.5	64.1	9.7
1988	133	2,322	2,455	4,486	6,941	1.9	33.5	3.5	64.6	9.8
1989	141	2,416	2,557	4,707	7,264	1.9	33.3	3.6	64.8	10.1
1990	148	2,337	2,485	4,925	7,410	2.0	31.5	3.4	66.5	10.2
1991	147	2,440	2,587	4,828	7,415	2.0	32.9	3.6	65.1	10.3
1992	159	2,427	2,586	4,622	7,208	2.2	33.7	3.7	64.1	10.2
1993	175	2,481	2,656	4,576	7,232	2.4	34.3	3.8	63.3	10.4
1994	161	2,497	2,658	4,379	7,037	2.3	35.5	3.9	62.2	10.3
1995	182	2,549	2,731	4,379	7,110	2.6	35.9	4.0	61.6	10.5
1996	143	2,507	2,650	4,453	7,103	2.0	35.3	4.0	62.7	10.6
1997	163	2,541	2,704	4,384	7,088	2.3	35.8	4.1	61.9	10.7
1998	111	2,366	2,477	4,570	7,047	1.6	33.6	3.7	64.9	10.5
1999	116	2,432	2,548	4,760	7,308	1.6	33.3	3.7	65.1	10.7
2000	99	2,225	2,324	4,753	7,077	1.4	31.4	3.4	67.2	10.2
2001	80	2,167	2,247	4,602	6,849	1.2	31.6	3.3	67.2	9.9
2002	108	1,898	2,006	4,528	6,534	1.7	29.0	2.9	69.3	9.5
2003	85	1,861	1,946	4,371	6,317	1.3	29.5	2.8	69.2	9.0
2004	91	1,765	1,856	4,230	6,086	1.5	29.0	2.6	69.5	8.7
2005	86	1,776	1,862	4,231	6,093	1.4	29.1	2.6	69.4	8.6
2006	92	1,840	1,932	4,168	6,100	1.5	30.2	2.7	68.3	8.4
2007	80	1,874	1,954	4,366	6,320	1.3	29.7	2.7	69.1	8.7
2008	76	1,783	1,859	4,237	6,096	1.2	29.2	2.6	69.5	8.5

Sources: Wisconsin Office of Health Informatics, *Trends in Maternal and Child Health Statistics, 1968-1988*; *Maternal and Child Health Statistics* for the years 1989-1994; *Wisconsin Births and Infant Deaths* for the years 1995-2008.

Figure 1. Age-Specific Teen Birth Rates, Wisconsin, 1990-2008



Sources: Wisconsin Office of Health Informatics, *Public Health Profiles* for the years 1989-1994; *Wisconsin Births and Infant Deaths* for the years 1995-2008.

Note: The 15-17 and 15-19 birth rates are not comparable with some previously published data because they exclude births to mothers less than 15 years of age. (Some previous birth rate calculations included mothers <15 years old in the <18 (less than 18) and <20 (less than 20) rates.) Birth rates are the number of births per 1,000 females in each age group.

Table 2a. Age-Specific Teen Birth Rates, Wisconsin, 2008 and United States, 2006

Age	Wisconsin Rate		U.S. Rate
	Mothers <15 Excluded	Mothers <15 Included	Mothers <15 Excluded
15-19	30.9	31.3	41.9
15-17	15.4	16.1	22.0
18-19	53.4		73.0

Sources: Wisconsin Office of Health Informatics, *Wisconsin Births and Infant Deaths, 2008*. United States rates are from the *National Vital Statistics Report, Vol. 57, No. 7, 2009*.

Notes: Rates are the number of births per 1,000 females in the age group. Rates for ages 15-19 and 15-17 exclude births to mothers less than 15 years old unless otherwise noted.

Table 2b. Teen Birth Rates, Wisconsin and United States, 1980-2008

	1980	1990	1998	1999	2000	2001	2002	2003	2004	2005	2006	2007	2008
Ages 15-17													
Wisconsin	21	24	19	20	19	18	16	16	15	15	16	16	15
United States	33	38	30	29	27	25	23	22	22	21	22	n/a	n/a
Ages 15-19													
Wisconsin	40	42	35	35	35	34	32	31	30	30	31	32	31
United States	53	60	51	50	48	45	43	42	41	41	42	n/a	n/a

Sources: Wisconsin Office of Health Informatics, *Trends in Maternal and Child Health Statistics, 1968-1988*; *Public Health Profiles* for the years 1989-1994; *Wisconsin Births and Infant Deaths* for the years 1995-2008. United States rates are from the National Center for Health Statistics (NCHS), *National Vital Statistics Report*.

Notes: Rates are the number of births per 1,000 females aged 15-19 and exclude births to mothers below age 15. U.S. rates for 2007 and 2008 are not yet available (n/a).

Table 3. Births to Teens by Age Group and Race/Ethnicity, Wisconsin, Selected Years

Year	Number	Number	Rate	Rate	Number	Rate	Number	Rate	Rate
	<15	15-17	15-17	<18	18-19	18-19	15-19	15-19	<20
1998									
White	30	1,171	11.3	11.6	2,835	41.6	4,006	23.4	23.6
Black/African American	60	732	79.3	85.7	1,040	199.7	1,772	122.7	126.8
American Indian	2	72	53.2	54.7	103	113.6	175	77.4	78.3
Hispanic/Latina, Any Race	11	272	55.8	58.1	425	129.3	697	85.4	86.8
Asian	8	119	39.6	42.3	165	100.7	284	61.2	62.9
Total Births	111	2,366	19.4	20.4	4,570	57.7	6,936	34.5	35.1
2007									
White	14	757	8.0	8.1	2,346	35.4	3,103	19.3	19.4
Black/African American	38	570	53.6	57.2	1,003	189.3	1,573	98.8	101.2
American Indian	5	72	52.2	55.9	160	165.9	232	99.0	101.2
Hispanic/Latina, Any Race	19	390	58.7	61.6	674	175.6	1,064	101.5	103.4
Asian	4	85	23.1	24.2	178	109.7	263	49.6	50.4
Total Births	80	1,874	16.0	16.7	4,366	56.0	6,240	32.0	32.4
2008									
White	15	671	7.2	7.4	2,288	34.1	2,959	18.5	18.6
Black/African American	39	569	53.6	57.3	978	177.1	1,547	95.9	98.3
American Indian	2	86	63.8	65.2	140	147.9	226	98.5	99.3
Hispanic/Latina, Any Race	19	373	53.7	56.5	627	156.7	1,000	91.4	93.1
Asian	1	84	23.4	23.6	194	113.9	278	52.5	52.6
Total Births	76	1,783	15.4	16.1	4,237	53.4	6,020	30.9	31.3

Sources: Wisconsin Office of Health Informatics, *Wisconsin Births and Infant Deaths* for the years 1995-2008.

Notes: Births to mothers of Hispanic origin are excluded from race categories (see Technical Notes). (In contrast, Table 12 includes mothers of Hispanic origin within race categories.) Because individuals could report more than one race for the first time during the 2000 Census, rates for earlier years are not directly comparable to those for 2000 and later.

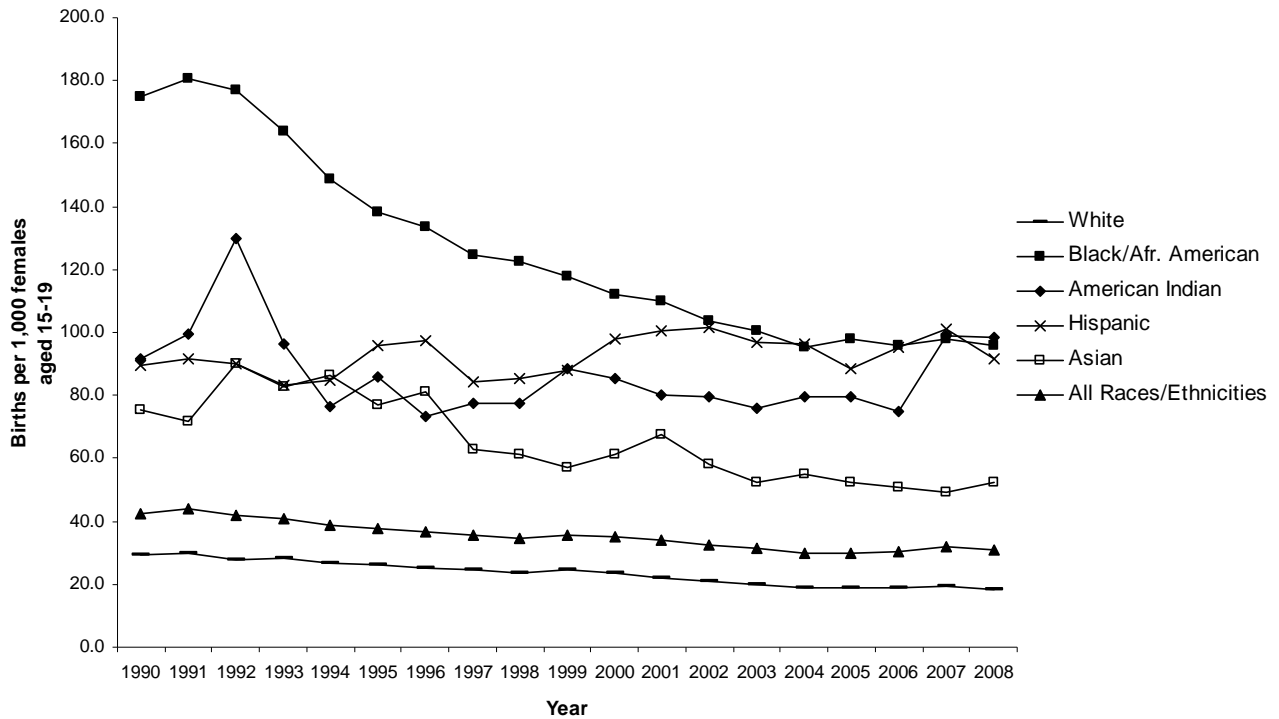
Population estimates, especially in relatively small and fast-growing populations, become less reliable with every year that passes after the Census on which they are based. This can affect the reliability of rates for some populations. Rates by race/ethnicity in the later half of the decade should thus be viewed with caution.

The 2007 teen birth rates by race may be different from previously published numbers. Population estimates by race for inter-censal years are updated annually and may be different from those in previous years.

Birth rates are the number of births per 1,000 females in each age race/ethnicity group. The <18 and <20 birth rates are per 1,000 females aged 15-17 and 15-19, respectively, but include births to mothers under 15 years of age.

Totals include all births to mothers in these age groups, regardless of race/ethnicity.

Figure 2. Teen Birth Rates by Race/Ethnicity, 1990-2008



Sources: Wisconsin Office of Health Informatics, *Maternal and Child Health Statistics 1990-1994*; *Wisconsin Births and Infant Deaths* for the years 1995-2008.

Note: Population estimates, especially in relatively small and fast-growing populations, become less reliable with every year that passes after the Census on which they are based. This can affect the reliability of rates for some populations. Rates by race/ethnicity in the later half of the decade should thus be viewed with caution.

Statewide Information

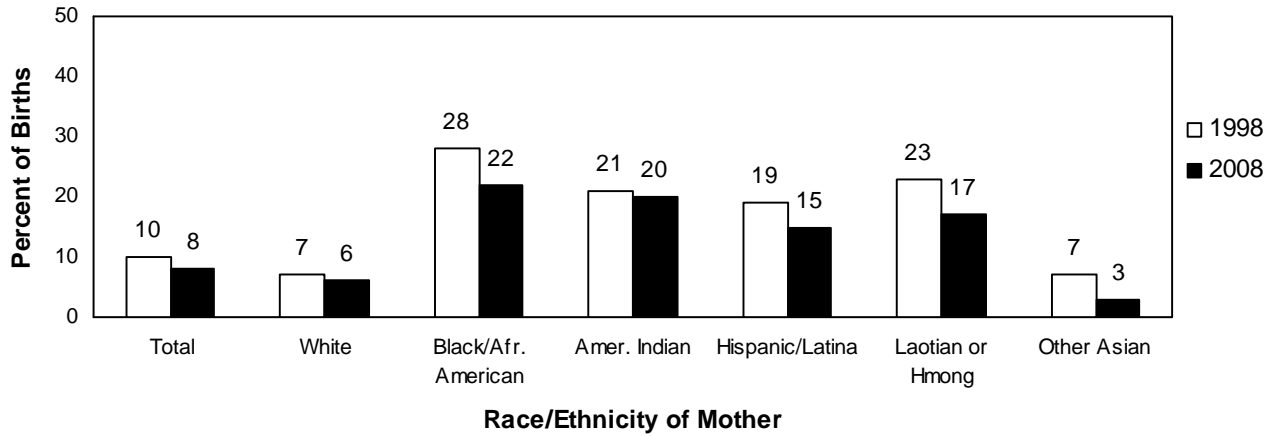
Table 4. Teen Births and Rates by Race/Ethnicity, 1990-2008

Year	Age	White		Black/African American		American Indian		Hispanic/Latina		Asian		All Races/Ethnicities	
		Number	Rate	Number	Rate	Number	Rate	Number	Rate	Number	Rate	Number	Rate
1990	15-19	4,421	29.4	2,091	175.1	167	91.5	399	89.7	183	75.3	7,262	42.4
	<20	4,460	29.6	2,180	182.6	169	92.6	405	91.1	195	80.3	7,410	43.3
1991	15-19	4,374	30.1	2,107	180.8	176	99.7	430	91.8	180	71.9	7,268	43.8
	<20	4,402	30.3	2,201	188.9	181	102.5	441	94.2	189	75.5	7,415	44.7
1992	15-19	4,051	27.7	2,078	177.1	222	130.0	458	90.3	240	90.1	7,049	42.1
	<20	4,087	27.9	2,177	185.6	223	130.5	465	91.7	256	96.1	7,208	43.0
1993	15-19	4,212	28.1	1,976	163.9	173	96.2	459	83.4	235	82.8	7,057	41.0
	<20	4,252	28.4	2,077	172.3	177	98.5	471	85.6	253	89.2	7,232	42.0
1994	15-19	4,086	26.6	1,876	148.6	144	76.4	508	84.9	259	86.3	6,876	38.8
	<20	4,134	26.9	1,961	155.3	147	78.0	527	88.1	265	88.3	7,037	39.8
1995	15-19	4,128	26.0	1,771	138.1	169	85.9	608	96.0	250	76.8	6,928	37.8
	<20	4,168	26.2	1,873	146.0	177	90.0	627	99.0	262	80.5	7,110	38.8
1996	15-19	4,061	24.9	1,787	133.3	151	73.2	667	97.4	294	81.2	6,963	36.8
	<20	4,080	25.0	1,881	140.3	156	75.7	678	99.1	308	85.1	7,106	37.5
1997	15-19	4,119	24.6	1,747	124.8	167	77.6	633	84.4	259	63.0	6,925	35.5
	<20	4,160	24.9	1,837	131.2	171	79.5	652	87.0	268	65.2	7,088	36.3
1998	15-19	4,006	23.4	1,772	122.7	175	77.4	697	85.4	284	61.2	6,936	34.5
	<20	4,036	23.6	1,832	126.8	177	78.3	708	86.8	292	62.9	7,047	35.1
1999	15-19	4,203	24.4	1,733	117.9	211	88.7	755	87.8	288	57.1	7,192	35.4
	<20	4,223	24.5	1,797	122.3	218	91.7	778	90.5	290	57.5	7,308	36.0
2000	15-19	3,961	23.6	1,634	112.5	194	85.2	866	97.8	315	61.2	6,978	35.2
	<20	3,987	23.8	1,686	116.0	195	85.6	881	99.5	320	62.1	7,077	35.7
2001	15-19	3,728	22.1	1,622	109.9	186	80.5	890	100.4	339	67.5	6,769	33.9
	<20	3,749	22.2	1,665	112.8	189	81.7	900	101.6	342	68.1	6,849	34.3
2002	15-19	3,483	20.7	1,546	104.2	186	79.7	912	102.0	298	58.0	6,426	32.2
	<20	3,509	20.8	1,600	107.8	189	81.0	932	104.3	303	59.0	6,534	32.7
2003	15-19	3,380	20.1	1,515	101.0	181	75.8	878	97.6	275	52.6	6,232	31.2
	<20	3,395	20.2	1,558	103.8	185	77.5	899	99.9	277	52.9	6,317	31.6
2004	15-19	3,163	18.9	1,458	96.3	189	79.5	892	97.1	289	54.9	5,995	30.0
	<20	3,178	19.0	1,504	99.3	193	81.2	917	99.8	290	55.1	6,086	30.5
2005	15-19	3,165	18.9	1,515	98.7	191	79.7	854	89.2	281	52.6	6,007	30.1
	<20	3,179	19.0	1,563	101.8	194	81.0	870	90.9	286	53.6	6,093	30.5
2006	15-19	3,115	19.1	1,494	96.6	177	74.5	953	95.9	265	50.8	6,008	30.6
	<20	3,139	19.2	1,540	99.6	181	76.2	967	97.3	269	51.6	6,100	31.1
2007	15-19	3,103	19.3	1,573	98.8	232	99.0	1,064	101.5	263	49.6	6,240	32.0
	<20	3,117	19.4	1,611	101.2	237	101.2	1,083	103.4	267	50.4	6,320	32.4
2008	15-19	2,959	18.5	1,547	95.9	226	98.5	1,000	91.4	278	52.5	6,020	30.9
	<20	2,974	18.6	1,586	98.3	228	99.3	1,019	93.1	279	52.6	6,096	31.3

Sources: Wisconsin Office of Health Informatics, *Maternal and Child Health Statistics* for the years 1990-1994; *Wisconsin Births and Infant Deaths* for the years 1995-2008.

Note: All rates are births per 1,000 females aged 15-19. The <20 birth rates include births to mothers less than 15. Population estimates, especially in relatively small and fast-growing populations, become less reliable with every year that passes after the Census on which they are based. This can affect the reliability of rates for some populations. Rates by race/ethnicity in the later half of the decade should thus be viewed with caution.

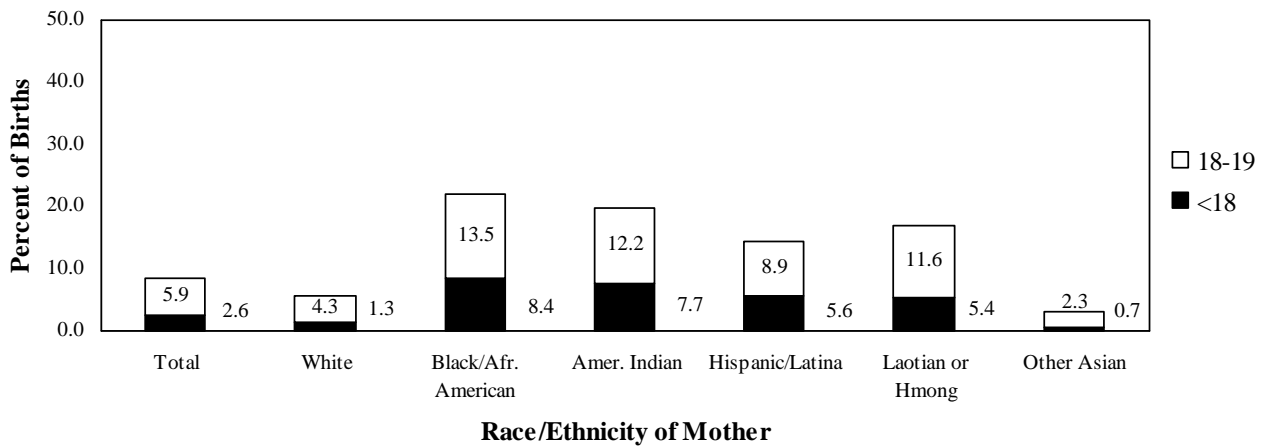
Figure 3. Births to Teens as a Percent of All Births in Each Race/Ethnicity Group, Wisconsin, 1998 and 2008



Source: Wisconsin Office of Health Informatics, *Wisconsin Births and Infant Deaths, 2008*.

Notes: Births to mothers of Hispanic origin are excluded from race categories in this figure (see Technical Notes). (In contrast, Table 12 includes mothers of Hispanic origin within race categories.)

Figure 4. Births to Teens as a Percent of All Births in Each Race/Ethnicity Group, by Maternal Age, Wisconsin 2008



Source: Wisconsin Office of Health Informatics, *Wisconsin Births and Infant Deaths, 2008*.

Notes: Births to mothers of Hispanic origin are excluded from race categories (see Technical Notes). (In contrast, Table 12 includes mothers of Hispanic origin within race categories.)

Statewide Information

Table 5. Births to Teens by Marital Status, Wisconsin, Selected Years

Marital Status	1998	2001	2002	2003	2004	2005	2006	2007	2008
Married									
Number	1,077	1,018	1,048	897	839	850	807	695	641
Percent	15.3%	14.9%	16.0%	14.2%	13.8%	14.0%	13.2%	11.0%	10.5%
Unmarried									
Number	5,970	5,831	5,486	5,420	5,247	5,243	5,293	5,625	5,455
Percent	84.7%	85.1%	84.0%	85.8%	86.2%	86.0%	86.8%	89.0%	89.5%
Teen Births	7,047	6,849	6,534	6,317	6,086	6,093	6,100	6,320	6,096

Sources: Wisconsin Office of Health Informatics, *Wisconsin Births and Infant Deaths* for the years 1995-2008.
 Note: Marital status was not reported for nine births in 2002 and ten births in 2003.

Table 6. Births to Teens Who Received First-Trimester Prenatal Care, by Age Group, Wisconsin, 1998-2008

Year	Less than 18		18-19		Less than 20		All Births/All Ages	
	Number	Percent	Number	Percent	Number	Percent	Number	Percent
1998	1,518	61	3,171	69	4,689	67	56,645	84
1999	1,520	60	3,401	71	4,921	67	57,203	84
2000	1,373	59	3,354	71	4,727	67	58,129	84
2001	1,345	60	3,219	70	4,564	67	57,747	84
2002	1,206	60	3,187	70	4,393	67	57,686	84
2003	1,196	61	3,147	72	4,343	69	59,296	85
2004	1,148	62	3,132	74	4,280	70	59,666	85
2005	1,119	60	3,123	74	4,242	70	60,309	85
2006	1,153	60	3,016	72	4,169	68	60,610	84
2007	1,141	58	3,102	71	4,243	67	60,275	83
2008	1,078	58	2,956	70	4,034	66	59,217	82

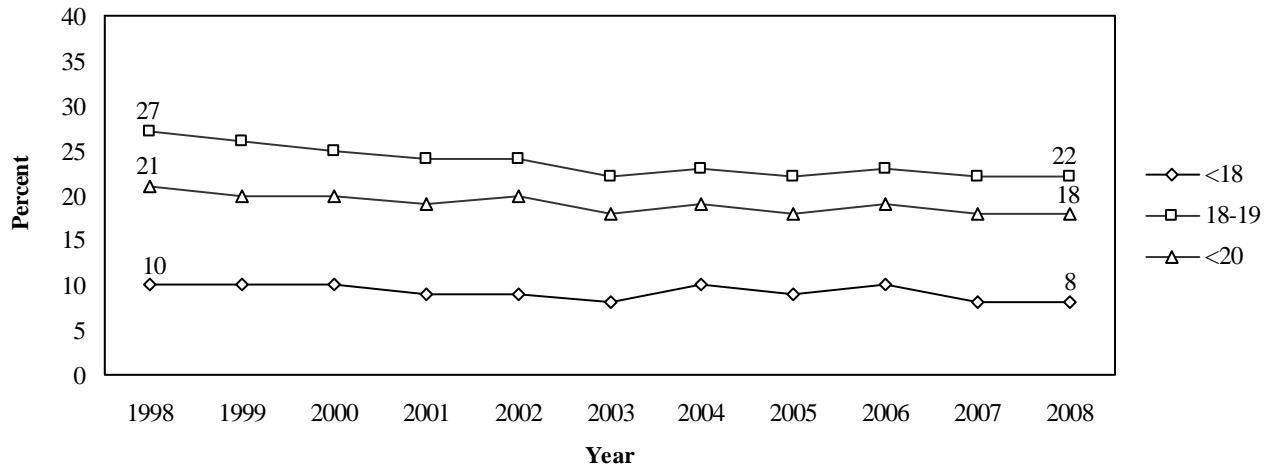
Sources: Wisconsin Office of Health Informatics, *Wisconsin Births and Infant Deaths* for the years 1995-2008.

Table 7. Second Order or Higher Births to Teens by Age Group, Wisconsin, Selected Years

Age Group	1998	2002	2003	2004	2005	2006	2007	2008
Less than 18	251	175	161	178	173	200	159	156
18-19	1,233	1,103	973	953	943	941	968	952
Total <20	1,484	1,278	1,134	1,131	1,116	1,141	1,127	1,108

Sources: Wisconsin Office of Health Informatics, *Wisconsin Births and Infant Deaths* for the years 1999-2008.
 Notes: Birth order means order of present birth in relation to previous births.

Figure 5. Percent of Second Order or Higher Births to Teens by Age Group, Wisconsin, 1998-2008



Sources: Wisconsin Office of Health Informatics, *Wisconsin Births and Infant Deaths* for the years 1996-2008.

Table 8. Births to Teens by Age Group and Selected Characteristics, Wisconsin 2008

	<15	15-17	<18	18-19	<20	All Births All Ages
Total	76	1,783	1,859	4,237	6,096	72,002
Race/Ethnicity of Mother						
White	15	671	686	2,288	2,974	53,561
Black/African American	39	569	608	978	1,586	7,236
American Indian	2	86	88	140	228	1,144
Hispanic/Latina	19	373	392	627	1,019	7,025
Laotian or Hmong	1	72	73	157	230	1,356
Other Asian	-	12	12	38	50	1,620
Unknown	-	-	-	9	9	60
Education of Mother						
Elementary or Less	64	116	180	95	275	2,778
Some High School	12	1,499	1,511	1,331	2,842	7,852
High School Graduate	-	150	150	2,374	2,524	20,117
Some College	-	-	-	415	415	18,633
College Graduate	-	-	-	-	-	15,392
Post-Graduate	-	5	5	1	6	6,839
Unknown	-	13	13	21	34	391
Marital Status						
Married	2	106	108	533	641	45,473
Unmarried	74	1,677	1,751	3,704	5,455	26,504
Unknown	-	-	-	-	-	25
Trimester Prenatal Care Began						
First	37	1,041	1,078	2,956	4,034	59,217
Second	26	565	591	978	1,569	9,587
Third	5	108	113	177	290	1,725
No Prenatal Care	5	44	49	54	103	565
Unknown	3	25	28	72	100	908
Number of Prenatal Care Visits						
No Visits	5	44	49	54	103	569
1-4	2	112	114	178	292	1,997
5-9	25	502	527	1,112	1,639	13,265
10-12	28	695	723	1,633	2,356	31,495
13+	14	395	409	1,135	1,544	23,308
Unknown	2	35	37	125	162	1,368
Birthweight						
<1,500 grams	1	36	37	62	99	898
1500-2,499 grams	9	141	150	300	450	4,153
2,500+ grams	66	1,605	1,671	3,875	5,546	66,935
Unknown	-	1	1	-	1	16
<2,500 grams	10	177	187	362	549	5,051

(Continued)

Table 8. Births to Teens by Age Group and Selected Characteristics, Wisconsin 2008

	<15	15-17	<18	18-19	<20	All Births All Ages
Smoked During Pregnancy						
No	69	1,508	1,577	3,237	4,814	61,561
Yes	6	265	271	979	1,250	10,133
Unknown	1	10	11	21	32	308
Live Birth Order						
First	75	1,628	1,703	3,285	4,988	28,260
Second	1	145	146	807	953	23,340
Third	-	9	9	128	137	11,893
Fourth	-	-	-	12	12	4,854
Fifth or Higher	-	1	1	5	6	3,653
Unknown	-	-	-	-	-	2
Plurality						
Single Birth	76	1,763	1,839	4,153	5,992	69,715
Multiple Birth	-	20	20	84	104	2,287

Source: Wisconsin Office of Health Informatics, *Wisconsin Births and Infant Deaths, 2008*.

Notes: Included in the total of all births are 25 births for which age of mother was not reported. Births to mothers of Hispanic origin are excluded from race categories (see Technical Notes). (In contrast, Table 12 includes mothers of Hispanic origin within race categories.) A dash (-) indicates there were no births in that category.

Table 9. Fetal, Neonatal, and Infant Deaths by Teen Age Group, Wisconsin 2008

	<15	15-17	<18	18-19	15-19	<20	All Deaths All Ages
Fetal deaths							
Number	-	13	13	15	28	28	387
Rate	-	-	-	-	4.6	4.6	5.3
Neonatal deaths							
Number	-	15	15	27	42	42	329
Rate	-	-	-	6.4	7.0	6.9	4.6
Infant deaths							
Number	1	23	24	42	65	66	501
Rate	-	12.9	12.9	9.9	10.8	10.8	7.0

Source: Wisconsin Office of Health Informatics, *Wisconsin Births and Infant Deaths, 2008*.

Notes: The fetal death rate is the number of reported fetal deaths per 1,000 live births and fetal deaths (see Technical Notes). (Fetal deaths are reportable only when fetal gestation is 20 weeks or more.)

The neonatal death rate is the number of deaths occurring before 28 days of age, per 1,000 live births.

The infant death rate is the number of deaths occurring before one year of age, per 1,000 live births.

Rates based on fewer than 20 deaths are omitted because they are subject to large random fluctuations.

Local Information

Table 10. Births to Teens by Age Group and County of Residence, Wisconsin 2008

County	<15	15-17	<18	18-19	<20	All Births All Ages
Total	76	1,783	1,859	4,237	6,096	72,002
Adams	-	10	10	25	35	183
Ashland	-	9	9	15	24	198
Barron	-	5	5	39	44	505
Bayfield	-	2	2	6	8	126
Brown	3	95	98	208	306	3,451
Buffalo	-	-	-	4	4	138
Burnett	-	3	3	15	18	148
Calumet	-	5	5	21	26	633
Chippewa	-	10	10	49	59	811
Clark	1	4	5	17	22	576
Columbia	-	7	7	31	38	652
Crawford	-	6	6	15	21	196
Dane	3	96	99	216	315	6,224
Dodge	-	11	11	57	68	954
Door	-	5	5	10	15	253
Douglas	-	9	9	32	41	470
Dunn	-	8	8	25	33	425
Eau Claire	-	11	11	70	81	1,211
Florence	-	3	3	1	4	37
Fond du Lac	1	22	23	58	81	1,164
Forest	-	5	5	6	11	98
Grant	-	10	10	35	45	605
Green	1	6	7	23	30	390
Green Lake	1	4	5	16	21	218
Iowa	-	4	4	7	11	325
Iron	-	-	-	3	3	52
Jackson	-	7	7	14	21	242
Jefferson	1	9	10	52	62	1,011
Juneau	-	4	4	25	29	275
Kenosha	2	76	78	178	256	2,306
Kewaunee	-	4	4	6	10	212
La Crosse	-	23	23	63	86	1,334
Lafayette	-	3	3	11	14	214
Langlade	-	2	2	20	22	205
Lincoln	-	8	8	21	29	317
Manitowoc	-	21	21	51	72	932
Marathon	1	29	30	87	117	1,683
Marinette	2	11	13	21	34	396
Marquette	-	3	3	7	10	152
Menominee	1	19	20	14	34	130
Milwaukee	41	711	752	1,281	2,033	15,368
Monroe	-	12	12	48	60	674

(Continued)

Local Information

Table 10. Births to Teens by Age Group and County of Residence, Wisconsin 2008

County	<15	15-17	<18	18-19	<20	All Births All Ages
Oconto	-	6	6	21	27	351
Oneida	-	3	3	29	32	320
Outagamie	-	52	52	89	141	2,384
Ozaukee	1	7	8	18	26	822
Pepin	-	-	-	1	1	82
Pierce	-	3	3	12	15	405
Polk	1	10	11	33	44	508
Portage	-	15	15	38	53	719
Price	-	3	3	4	7	108
Racine	4	96	100	190	290	2,673
Richland	-	5	5	20	25	233
Rock	6	62	68	144	212	2,076
Rusk	-	5	5	12	17	160
St. Croix	-	9	9	29	38	1,081
Sauk	-	18	18	46	64	773
Sawyer	1	5	6	13	19	194
Shawano	1	9	10	28	38	451
Sheboygan	1	32	33	82	115	1,403
Taylor	-	3	3	7	10	254
Trempealeau	-	3	3	23	26	401
Vernon	-	3	3	12	15	444
Vilas	-	5	5	13	18	175
Walworth	-	22	22	68	90	1,191
Washburn	-	2	2	14	16	168
Washington	-	26	26	65	91	1,524
Waukesha	1	22	23	93	116	3,956
Waupaca	-	12	12	38	50	551
Waushara	-	5	5	16	21	205
Winnebago	-	35	35	100	135	1,955
Wood	2	13	15	76	91	941

Source: Wisconsin Office of Health Informatics, *Wisconsin Births and Infant Deaths, 2008*.

Notes: Included in the "all births" column are 25 births for which age of mother was not reported. A dash (-) indicates there were no births in that category.

Local Information

Table 11. Teen Birth Rates and Estimated Pregnancy Rates by Age Group and County of Residence, Wisconsin 2008

County	Birth Rate			Estimated Pregnancy Rate		
	<18	18-19	<20	<18	18-19	<20
Total	16.1	53.4	31.3	20.5	64.6	38.5
Adams	-	122.5	71.0	-	137.3	81.1
Ashland	-	-	43.3	-	-	45.1
Barron	-	61.4	28.9	-	63.0	29.5
Bayfield	-	-	-	-	-	-
Brown	19.1	61.3	35.9	22.1	71.6	41.8
Buffalo	-	-	-	-	-	-
Burnett	-	-	-	-	-	-
Calumet	-	31.7	16.8	-	37.7	19.3
Chippewa	-	60.0	30.4	-	60.0	30.9
Clark	-	-	17.0	-	-	17.0
Columbia	-	42.2	21.7	-	53.1	31.4
Crawford	-	-	38.0	-	-	48.9
Dane	9.9	32.1	18.8	17.4	49.3	30.2
Dodge	-	53.0	25.4	15.6	72.5	38.4
Door	-	-	-	-	-	26.1
Douglas	-	56.4	30.2	-	56.4	30.2
Dunn	-	27.8	15.8	-	27.8	15.8
Eau Claire	-	35.7	17.3	-	39.8	19.2
Florence	-	-	-	-	-	-
Fond du Lac	11.6	42.8	24.3	13.6	50.9	28.7
Forest	-	-	-	-	-	-
Grant	-	39.5	21.3	-	48.5	26.0
Green	-	48.6	25.3	-	55.0	33.7
Green Lake	-	-	37.4	-	-	44.6
Iowa	-	-	-	-	-	-
Iron	-	-	-	-	-	-
Jackson	-	-	34.8	-	-	38.1
Jefferson	-	41.9	21.3	-	48.3	24.4
Juneau	-	74.6	35.3	-	86.6	43.8
Kenosha	23.3	75.6	44.9	27.8	84.5	51.3
Kewaunee	-	-	-	-	-	-
La Crosse	7.7	30.4	17.1	10.8	34.3	20.4
Lafayette	-	-	-	-	-	-
Langlade	-	72.5	32.7	-	79.7	37.2
Lincoln	-	55.0	30.9	-	57.6	34.2
Manitowoc	12.7	44.8	25.8	16.9	53.6	31.9
Marathon	11.0	45.6	25.3	14.7	55.6	31.6
Marinette	-	36.0	24.9	-	46.3	30.8
Marquette	-	-	-	-	-	-
Menominee	155.0	-	165.0	155.0	-	169.9
Milwaukee	38.4	100.3	62.8	48.7	125.1	78.9
Monroe	-	76.8	39.8	-	86.4	44.5

(Continued)

Local Information

Table 11. Teen Birth Rates and Estimated Pregnancy Rates by Age Group and County of Residence, Wisconsin 2008

County	Birth Rate			Estimated Pregnancy Rate		
	<18	18-19	<20	<18	18-19	<20
Oconto	-	38.9	20.9	-	48.1	25.5
Oneida	-	64.0	28.8	-	81.7	37.8
Outagamie	14.5	36.0	23.3	17.9	46.5	29.6
Ozaukee	-	-	8.5	-	20.9	11.4
Pepin	-	-	-	-	-	-
Pierce	-	-	-	-	-	-
Polk	-	54.4	29.7	-	54.4	29.7
Portage	-	30.2	16.7	-	35.7	20.1
Price	-	-	-	-	-	-
Racine	25.9	72.9	44.9	31.4	87.5	54.0
Richland	-	76.0	41.6	-	79.8	46.6
Rock	21.1	67.0	39.5	23.3	76.7	44.7
Rusk	-	-	-	-	-	-
St. Croix	-	26.7	14.4	-	26.7	14.4
Sauk	-	58.3	33.7	21.6	79.8	45.8
Sawyer	-	-	-	-	-	-
Shawano	-	51.3	28.7	-	58.6	34.8
Sheboygan	14.6	53.7	30.4	15.0	59.6	33.0
Taylor	-	-	-	-	-	-
Trempealeau	-	63.2	28.8	-	68.7	31.0
Vernon	-	-	-	-	-	-
Vilas	-	-	-	-	-	37.5
Walworth	11.4	48.2	26.9	14.0	56.0	31.7
Washburn	-	-	-	-	-	-
Washington	10.8	38.6	22.2	15.0	46.9	28.1
Waukesha	3.1	17.6	9.1	6.1	24.6	13.8
Waupaca	-	54.1	28.3	-	58.4	30.6
Waushara	-	-	28.9	-	64.8	37.2
Winnebago	9.7	41.2	22.3	12.4	48.6	26.9
Wood	-	77.1	37.7	14.0	87.2	44.0

Sources: Wisconsin Office of Health Informatics, *Wisconsin Births and Infant Deaths, 2008*; and *Reported Induced Terminations of Pregnancy in Wisconsin, 2008*. Population estimates used to calculate rates are provisional and subject to revision.

Notes: A birth rate is not calculated when there were fewer than 20 births for an age group in a county; this is indicated with a dash (-). Rates are per 1,000 females in the age group. The birth rates for mothers <20 and for mothers <18 include births to mothers below age 15.

$$\text{<20 Birth Rate} = 1,000 \times \left(\frac{\text{No. of resident live births to mothers <20}}{\text{No. of females 15-19}} \right)$$

$$\text{<18 Birth Rate} = 1,000 \times \left(\frac{\text{No. of resident live births to mothers <18}}{\text{No. of females 15-17}} \right)$$

The pregnancy rate is an estimate based on the number of live births, reported fetal deaths, and reported induced terminations of pregnancy. This underestimates the actual number of pregnancies because it does not include miscarriages not reported as fetal deaths. Fetal deaths are reportable when fetal gestation is 20 weeks or more. Pregnancies from border counties may also be underestimated because of limited reporting by out-of-state facilities.

Local Information

Table 12. Births to Teens by Age Group, Race of Mother and County of Residence, Wisconsin 2008

County	Total	<18			18-19			Total <20		
		White American	Black/Afr.	Other	White American	Black/Afr.	Other	White American	Black/Afr.	Other
Total	6,096	1,051	622	186	2,879	998	360	3,930	1,620	546
Adams	35	10	-	-	24	1	-	34	1	-
Ashland	24	6	-	3	9	-	6	15	-	9
Barron	44	5	-	-	35	2	2	40	2	2
Bayfield	8	1	-	1	-	-	6	1	-	7
Brown	306	65	10	23	146	20	42	211	30	65
Buffalo	4	-	-	-	4	-	-	4	-	-
Burnett	18	2	-	1	14	-	1	16	-	2
Calumet	26	3	2	-	17	-	4	20	2	4
Chippewa	59	9	-	1	46	2	1	55	2	2
Clark	22	5	-	-	17	-	-	22	-	-
Columbia	38	7	-	-	29	1	1	36	1	1
Crawford	21	6	-	-	15	-	-	21	-	-
Dane	315	56	35	8	140	62	14	196	97	22
Dodge	68	10	1	-	56	-	1	66	1	1
Door	15	5	-	-	10	-	-	15	-	-
Douglas	41	7	-	2	28	1	3	35	1	5
Dunn	33	7	1	-	23	-	2	30	1	2
Eau Claire	81	10	-	1	57	1	12	67	1	13
Florence	4	3	-	-	1	-	-	4	-	-
Fond du Lac	81	20	2	1	54	2	2	74	4	3
Forest	11	1	-	4	1	-	5	2	-	9
Grant	45	10	-	-	34	-	1	44	-	1
Green	30	7	-	-	23	-	-	30	-	-
Green Lake	21	4	-	1	15	-	1	19	-	2
Iowa	11	4	-	-	7	-	-	11	-	-
Iron	3	-	-	-	2	-	1	2	-	1
Jackson	21	7	-	-	10	-	4	17	-	4
Jefferson	62	10	-	-	50	-	2	60	-	2
Juneau	29	3	-	1	24	-	1	27	-	2
Kenosha	256	54	20	4	138	38	2	192	58	6
Kewaunee	10	4	-	-	6	-	-	10	-	-
La Crosse	86	15	2	6	46	2	15	61	4	21
Lafayette	14	3	-	-	11	-	-	14	-	-
Langlade	22	2	-	-	17	-	3	19	-	3
Lincoln	29	7	-	1	21	-	-	28	-	1
Manitowoc	72	18	-	3	43	2	6	61	2	9

(Continued)

Table 12. Births to Teens by Age Group, Race of Mother and County of Residence, Wisconsin 2008

County	Total	<18			18-19			Total <20		
		White	Black/Afr. American	Other	White	Black/Afr. American	Other	White	Black/Afr. American	Other
Marathon	117	15	1	14	65	1	21	80	2	35
Marinette	34	13	-	-	21	-	-	34	-	-
Marquette	10	3	-	-	6	-	1	9	-	1
Menominee	34	1	-	19	2	-	12	3	-	31
Milwaukee	2,033	233	482	37	434	766	81	667	1,248	118
Monroe	60	12	-	-	44	-	4	56	-	4
Oconto	27	6	-	-	21	-	-	27	-	-
Oneida	32	2	1	-	29	-	-	31	1	-
Outagamie	141	33	2	17	70	5	14	103	7	31
Ozaukee	26	8	-	-	17	-	1	25	-	1
Pepin	1	-	-	-	1	-	-	1	-	-
Pierce	15	3	-	-	11	-	1	14	-	1
Polk	44	11	-	-	30	-	3	41	-	3
Portage	53	8	1	6	28	-	10	36	1	16
Price	7	3	-	-	4	-	-	7	-	-
Racine	290	57	39	4	129	57	4	186	96	8
Richland	25	5	-	-	20	-	-	25	-	-
Rock	212	49	17	2	123	21	-	172	38	2
Rusk	17	5	-	-	12	-	-	17	-	-
St. Croix	38	9	-	-	28	1	-	37	1	-
Sauk	64	18	-	-	41	1	4	59	1	4
Sawyer	19	1	-	5	5	-	8	6	-	13
Shawano	38	8	-	2	20	1	7	28	1	9
Sheboygan	115	25	2	6	65	-	17	90	2	23
Taylor	10	3	-	-	7	-	-	10	-	-
Trempealeau	26	3	-	-	23	-	-	26	-	-
Vernon	15	3	-	-	12	-	-	15	-	-
Vilas	18	1	-	4	5	-	8	6	-	12
Walworth	90	22	-	-	67	1	-	89	1	-
Washburn	16	1	-	1	14	-	-	15	-	1
Washington	91	25	-	1	62	1	2	87	1	3
Waukesha	116	21	-	2	83	3	7	104	3	9
Waupaca	50	12	-	-	37	1	-	49	1	-
Waushara	21	5	-	-	15	1	-	20	1	-
Winnebago	135	28	3	4	88	4	8	116	7	12
Wood	91	13	1	1	67	-	9	80	1	10

Source: Resident birth certificates, Office of Health Informatics, Division of Public Health, Wisconsin Department of Health Services.

Note: In this table, births to mothers of Hispanic/Latina origin are included within the race categories (see Technical Notes). This differs from the other tables related to race/ethnicity in this report. A dash (-) indicates there were no births in that category.

Local Information

Table 13. Births to Unmarried Teens by Age Group and County of Residence, Wisconsin 2008

County	<15	15-17	<18	18-19	<20	All Nonmarital Births
Total	74	1,677	1,751	3,704	5,455	26,504
Adams	-	9	9	21	30	84
Ashland	-	7	7	12	19	78
Barron	-	5	5	33	38	193
Bayfield	-	n/s	n/s	6	8	35
Brown	n/s	90	93	179	272	1,302
Buffalo	-	-	-	n/s	n/s	39
Burnett	-	n/s	n/s	12	15	66
Calumet	-	4	4	16	20	124
Chippewa	-	8	8	39	47	249
Clark	-	n/s	4	11	15	101
Columbia	-	7	7	26	33	201
Crawford	-	6	6	14	20	84
Dane	n/s	93	96	192	288	1,769
Dodge	-	11	11	47	58	289
Door	-	4	4	6	10	70
Douglas	-	9	9	26	35	201
Dunn	-	7	7	16	23	128
Eau Claire	-	9	9	47	56	383
Florence	-	n/s	n/s	n/s	n/s	16
Fond du Lac	n/s	20	21	52	73	395
Forest	-	5	5	6	11	47
Grant	-	10	10	28	38	182
Green	n/s	6	7	19	26	136
Green Lake	n/s	n/s	4	15	19	65
Iowa	-	n/s	n/s	6	9	75
Iron	-	-	-	n/s	n/s	22
Jackson	-	5	5	12	17	96
Jefferson	n/s	9	10	40	50	320
Juneau	-	n/s	n/s	20	23	99
Kenosha	n/s	74	76	161	237	1,007
Kewaunee	-	n/s	n/s	4	8	57
La Crosse	-	19	19	46	65	402
Lafayette	-	n/s	n/s	9	12	63
Langlade	-	n/s	n/s	17	19	86
Lincoln	-	8	8	19	27	114
Manitowoc	-	17	17	40	57	277
Marathon	n/s	19	20	71	91	470
Marinette	n/s	10	12	17	29	152
Marquette	-	n/s	n/s	4	7	44
Menominee	n/s	19	20	14	34	109
Milwaukee	40	694	734	1,211	1,945	8,485
Monroe	-	11	11	43	54	218

(Continued)

Local Information

Table 13. Births to Unmarried Teens by Age Group and County of Residence, Wisconsin 2008

County	<15	15-17	<18	18-19	<20	All Nonmarital Births
Oconto	-	5	5	20	25	99
Oneida	-	n/s	n/s	22	24	103
Outagamie	-	45	45	69	114	599
Ozaukee	n/s	6	7	15	22	143
Pepin	-	-	-	n/s	n/s	16
Pierce	-	n/s	n/s	10	13	104
Polk	n/s	10	11	29	40	195
Portage	-	9	9	26	35	182
Price	-	n/s	n/s	n/s	7	33
Racine	n/s	93	97	176	273	1,271
Richland	-	5	5	18	23	80
Rock	6	61	67	133	200	973
Rusk	-	5	5	7	12	49
St. Croix	-	9	9	26	35	230
Sauk	-	11	11	42	53	260
Sawyer	n/s	5	6	12	18	98
Shawano	n/s	9	10	25	35	170
Sheboygan	n/s	27	28	63	91	406
Taylor	-	n/s	n/s	6	8	74
Trempealeau	-	n/s	n/s	18	21	136
Vernon	-	n/s	n/s	12	15	89
Vilas	-	5	5	12	17	78
Walworth	-	20	20	57	77	441
Washburn	-	n/s	n/s	9	11	51
Washington	-	26	26	55	81	345
Waukesha	n/s	22	23	79	102	753
Waupaca	-	10	10	35	45	189
Waushara	-	5	5	12	17	58
Winnebago	-	32	32	80	112	605
Wood	n/s	11	13	68	81	341

Source: Wisconsin Office of Health Informatics, *Wisconsin Births and Infant Deaths, 2008*.

Notes: A dash (-) indicates there were no births to unmarried women in this age group. An n/s indicates that births to unmarried women are not shown, and at least one but fewer than five total births (to married and unmarried mothers) occurred in the age group (see Table 10).

Local Information

Table 14. Births by Teen Age Group and Selected Places of Residence, Wisconsin 2008

City	<15	15-17	<18	18-19	<20	All Births
Appleton	-	32	32	64	96	1,369
Beloit	4	34	38	58	96	595
Brookfield	-	-	-	5	5	300
Caledonia (V)	-	2	2	10	12	259
De Pere	-	3	3	8	11	341
Eau Claire	-	8	8	55	63	811
Fitchburg	-	7	7	18	25	414
Fond du Lac	1	17	18	44	62	628
Franklin	-	2	2	11	13	358
Grand Chute (T)	-	-	-	5	5	124
Green Bay	2	78	80	152	232	1,996
Greenfield	-	3	3	17	20	392
Janesville	2	15	17	61	78	855
Kenosha	2	64	66	145	211	1,715
La Crosse	-	13	13	39	52	613
Madison	3	52	55	108	163	2,989
Manitowoc	-	15	15	33	48	462
Menomonee Falls (V)	-	2	2	12	14	361
Mequon/Thiensville	-	2	2	4	6	197
Milwaukee	35	671	706	1,152	1,858	11,312
Mount Pleasant (V)	-	2	2	9	11	231
Muskego	1	1	2	6	8	223
Neenah/Menasha	-	11	11	41	52	699
New Berlin	-	1	1	3	4	312
Oak Creek	-	3	3	10	13	423
Oshkosh	-	19	19	40	59	764
Racine	4	87	91	148	239	1,579
Sheboygan	1	29	30	66	96	799
South Milwaukee	1	5	6	21	27	232
Stevens Point	-	10	10	17	27	312
Sun Prairie	-	6	6	25	31	466
Superior	-	7	7	25	32	334
Watertown	-	4	4	24	28	344
Waukesha	-	13	13	36	49	1,067
Wausau	1	14	15	49	64	636
Wauwatosa	1	1	2	3	5	567
West Allis	2	12	14	33	47	820
West Bend	-	14	14	23	37	468

Source: Resident birth certificates, Office of Health Informatics, Division of Public Health, Wisconsin Department of Health Services.

Note: A dash (-) indicates there were no births in that category.

This table includes cities with a population of 20,000 or more. Combined areas include: Mequon (C) with Thiensville (V); and Neenah (C) with Menasha (C).

Table 15. Teen Birth Rates by Selected Cities of Residence, Wisconsin 2008

City	Teen Birth Rate (15-19)	Teen Birth Rate (<20)
Green Bay	65.4	66.0
Kenosha	63.9	64.5
Madison	18.7	19.0
Milwaukee	82.0	83.6
Racine	83.4	84.9
Wisconsin	30.9	31.3

Source: Office of Health Informatics, Division of Public Health, Wisconsin Department of Health Services.

Notes: The teen birth rate is the number of resident live births per 1,000 females aged 15-19; the <20 rate includes births to mothers less than 15 years old.

Population estimates used in calculating rates are provisional and subject to revision. These are the only Wisconsin cities for which population estimates by age and sex are available.

Trend Information

Table 16. Births to Teens by County of Residence, Wisconsin 1998-2008

County	1998	1999	2000	2001	2002	2003	2004	2005	2006	2007	2008
Total	7,047	7,308	7,077	6,849	6,534	6,317	6,086	6,093	6,100	6,320	6,096
Adams	28	23	20	23	26	21	24	26	24	27	35
Ashland	17	26	33	19	22	28	10	22	17	22	24
Barron	59	60	45	55	63	47	41	45	50	45	44
Bayfield	11	21	8	14	12	6	13	10	8	11	8
Brown	278	290	332	290	304	300	262	279	276	304	306
Buffalo	7	9	15	12	11	7	7	13	11	9	4
Burnett	14	24	18	23	22	18	16	16	21	15	18
Calumet	36	30	20	33	19	33	31	22	25	22	26
Chippewa	73	87	73	68	62	45	58	56	52	58	59
Clark	43	35	37	36	42	36	37	38	31	36	22
Columbia	60	38	42	42	39	42	44	41	45	42	38
Crawford	21	23	25	22	25	16	13	14	16	13	21
Dane	330	339	382	358	335	306	343	321	325	364	315
Dodge	68	98	100	80	80	79	72	71	77	63	68
Door	19	20	25	21	18	19	17	19	17	14	15
Douglas	57	66	65	53	46	51	44	38	43	44	41
Dunn	47	38	34	40	33	43	34	35	27	46	33
Eau Claire	78	89	85	91	83	89	77	87	82	90	81
Florence	-	2	5	1	4	2	-	1	2	3	4
Fond du Lac	96	120	101	102	91	86	86	102	94	100	81
Forest	19	19	11	17	18	16	14	15	15	12	11
Grant	52	40	47	37	45	55	49	39	35	44	45
Green	23	38	26	31	30	27	28	34	36	31	30
Green Lake	22	14	26	18	19	17	17	16	11	14	21
Iowa	9	18	19	19	21	13	14	16	27	17	11
Iron	1	1	8	1	-	3	4	1	6	1	3
Jackson	26	32	31	21	22	26	29	23	27	26	21
Jefferson	86	88	79	70	83	74	59	85	64	64	62
Juneau	41	41	39	34	37	29	30	23	35	41	29
Kenosha	256	262	245	222	232	228	199	185	211	222	256
Kewaunee	12	18	19	13	17	16	13	13	10	11	10
La Crosse	115	114	81	105	95	108	95	94	103	99	86
Lafayette	10	14	16	20	13	8	19	9	10	13	14
Langlade	27	38	34	30	34	24	24	27	18	31	22
Lincoln	35	33	25	27	33	27	30	23	33	31	29
Manitowoc	94	90	85	80	88	101	76	77	71	81	72

(Continued)

Trend Information

Table 16. Births to Teens by County of Residence, Wisconsin 1998-2008

County	1998	1999	2000	2001	2002	2003	2004	2005	2006	2007	2008
Marathon	120	143	141	119	137	104	107	122	126	112	117
Marinette	41	42	53	49	39	38	53	49	43	34	34
Marquette	9	21	21	31	19	14	22	18	13	21	10
Menominee	20	23	18	27	16	18	23	25	24	29	34
Milwaukee	2,445	2,480	2,331	2,326	2,184	2,092	2,042	2,034	2,051	2,085	2,033
Monroe	63	53	71	56	52	51	76	50	57	59	60
Oconto	35	42	30	32	33	38	30	27	35	31	27
Oneida	31	26	27	28	21	26	19	29	23	28	32
Outagamie	144	171	162	161	172	145	110	124	125	140	141
Ozaukee	32	32	29	27	28	29	30	25	24	22	26
Pepin	5	9	7	8	6	5	4	2	3	6	1
Pierce	27	27	31	19	27	16	21	28	25	17	15
Polk	38	47	40	46	35	39	35	35	49	41	44
Portage	75	77	84	68	71	66	52	48	44	69	53
Price	13	13	7	9	10	11	8	11	9	4	7
Racine	365	348	352	291	328	324	281	303	299	312	290
Richland	18	18	15	22	12	16	13	12	14	11	25
Rock	252	266	257	273	244	232	226	233	218	248	212
Rusk	13	27	12	21	17	14	20	15	10	17	17
St. Croix	42	50	55	46	31	41	43	46	38	36	38
Sauk	66	63	63	75	79	56	64	65	70	72	64
Sawyer	23	28	32	32	22	18	29	30	24	31	19
Shawano	43	45	38	43	42	35	42	39	48	34	38
Sheboygan	138	150	132	138	107	125	122	135	113	116	115
Taylor	19	21	17	20	17	17	17	20	7	20	10
Trempealeau	28	24	24	29	16	29	35	22	27	26	26
Vernon	25	29	36	21	29	22	20	26	20	18	15
Vilas	13	14	18	20	18	22	11	15	15	27	18
Walworth	109	112	100	114	93	103	118	83	96	99	90
Washburn	13	19	20	22	18	14	15	20	15	12	16
Washington	88	89	77	76	63	70	45	54	60	63	91
Waukesha	206	174	191	146	153	147	142	138	156	135	116
Waupaca	68	52	56	53	46	63	50	41	47	49	50
Waushara	29	35	24	34	34	37	27	29	23	28	21
Winnebago	142	158	157	141	129	136	137	136	135	129	135
Wood	79	82	93	98	62	58	68	68	59	73	91

Source: Resident birth certificates, Office of Health Informatics, Division of Public Health, Wisconsin Department of Health Services.

Note: A dash (-) indicates there were no births in that category.

Definitions, Explanations of Terms, and Limitations of the Data

Teens. “Teens” in this report are females under 20 years of age. “Younger teens” are less than 18 years of age. “Older teens” are 18 to 19 years of age.

Population Estimates. The Department of Health Services, Office of Health Informatics, produces mid-year population estimates for the counties and state of Wisconsin by age, sex, race, and Hispanic ethnicity for non-Census years. These estimates are used to calculate population-based health statistics, such as teen birth rates.

Race/Ethnicity Classifications. The Office of Health Informatics has reported maternal and child health data by race and ethnicity two different ways. The first presentation of data excludes persons of Hispanic/Latina ethnicity from any of the race categories and shows data for Hispanics/Latinas separately. Most of the tables and graphs in this report present the race/ethnicity data in this format. Table 12 includes Hispanics/Latinas within the racial categories.

Prior to 1994, Wisconsin birth reports included a racial category labeled “Indochinese.” Beginning in 1994, this category was redefined as “Laotian or Hmong” (who constituted approximately 95 percent of the Indochinese category). The remaining 5 percent of births in the Indochinese category were reallocated to the “Other Asian” grouping; this includes Vietnamese, Cambodian, Thai, Chinese, Japanese, and East Indian.

Mortality.

Infant Deaths. The birth-death cohort is not completed until one full year after the end of the birth cohort calendar year. This publication reports mortality data on infants who died during 2008, rather than the mortality experience of the 2008 birth cohort, to allow more timely reporting on infant mortality.

Fetal Deaths. A fetal death or stillbirth is “a fetus which, after complete expulsion or extraction from the woman, does not breathe or show other evidence of life such as beating of the heart, pulsation of the umbilical cord, or definite movement of voluntary muscles.” By Wisconsin statute, a stillbirth of at least 20 weeks’ gestation or 350 grams must be reported. Some 2008 stillbirths (fetal deaths) to Wisconsin residents are not included in this publication because some were less than 20 weeks’ gestation, some occurred outside Wisconsin, and an unknown number that occurred within the state were not reported. (Note: A fetal death report is not used for induced terminations of pregnancy.)

Limitations of the Data. Vital records information may have some limitations related to completeness, accuracy, and timeliness of registration, quality control procedures and classification problems. The reporting of live births and infant deaths is considered to be essentially complete for births occurring in Wisconsin. A cooperative exchange program between the states has been in operation for several decades to allocate birth and death certificates to the state of residence. Although this exchange program is not totally complete, the incompleteness is not of sufficient magnitude to seriously affect natality and infant mortality statistics.

Edit checks are incorporated in the software used for electronic transmission of birth certificate data, and the Vital Records Registration and Statistics Unit reviews birth certificates and death certificates for logical inconsistencies. Some errors remain after this review, but they are thought to have little, if any, effect on statistical results.

Births to Teens in Wisconsin, 2008
P-45365-08 (November 2009)

Wisconsin Department of Health Services
Division of Public Health
Office of Health Informatics