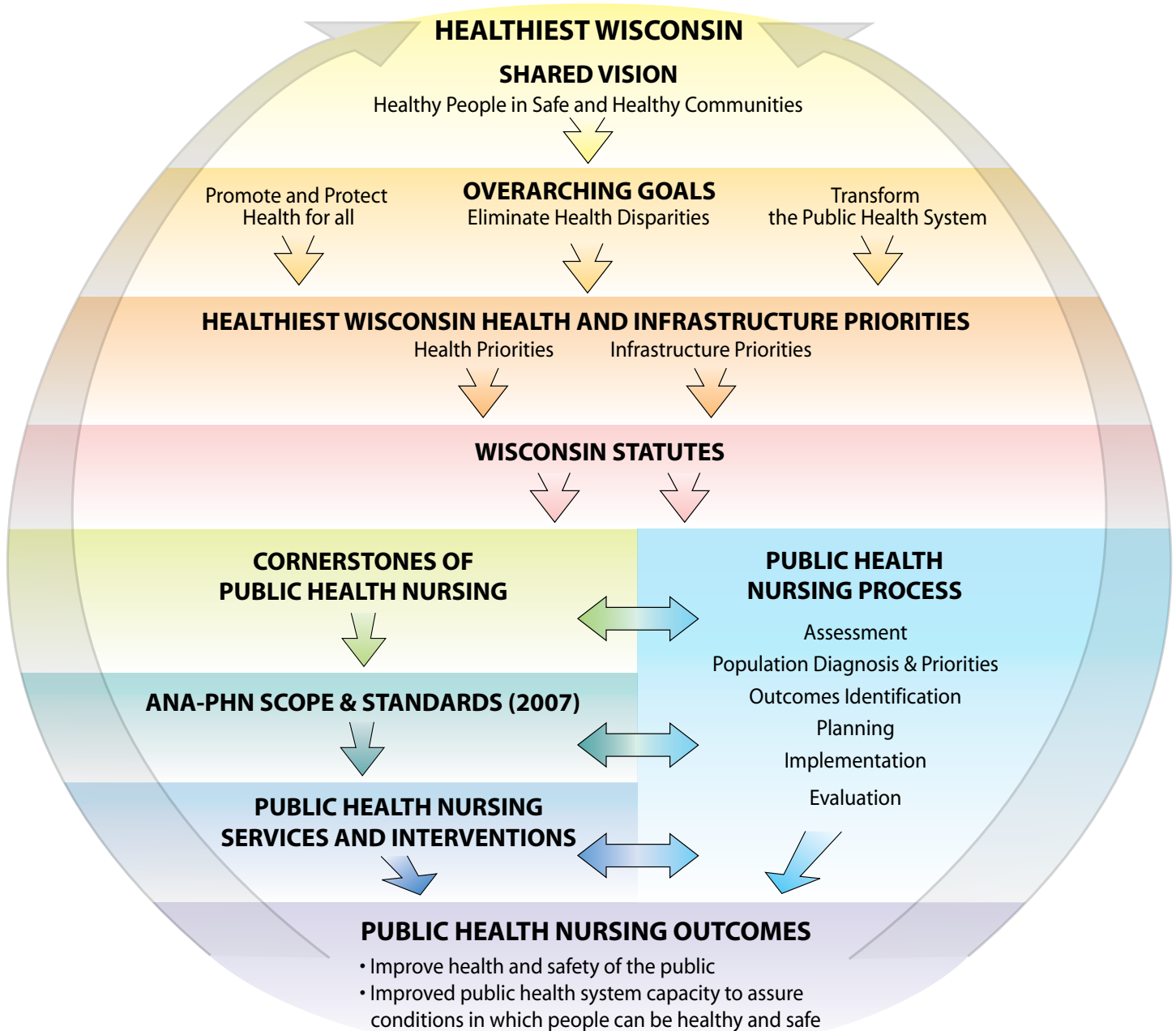


Wisconsin's Public Health Nursing Practice Model



Sources

- American Nurses Association, Public Health Nursing: Scope and Standards of Practice, (December, 2006).
- Wisconsin Department of Health and Family Services, Healthiest Wisconsin 2010: A Partnership Plan to Improve the Health of the Public, PPH 0276 (April, 2002).
- Wisconsin Statutes: s250-255 (Public Health).
- Wisconsin Administrative Rule: HFS139.08; HFS140.04(1)(a)
- Wisconsin Statutes: s444, ch N6, N7 (Nurse Practice Act).
- Minnesota Department of Health, Public Health Interventions, Applications for Public Health Nursing Practice, Division of Community Health Services, Public Health Nursing Section, (March, 2001).
- Cornerstones of Public Health Nursing, Minnesota Department of Health, Division of Community Health Services, Public Health Nursing Section, (2004).

The model concept was developed jointly by Wisconsin Division of Public Health, Public Health Nursing, University of Wisconsin - Madison, School of Nursing, and academic/practice nurses across Wisconsin.

The model is endorsed by Linking Education and Practice for Excellence in Public Health Nursing (LEAP) Advisory Committee, April 21, 2008.