

Wisconsin PRAMS

Pregnancy Risk Assessment Monitoring System



Wisconsin PRAMS Quarterly Newsletter—Fall 2024

Latest Data Available

2022 PRAMS data are now available! In 2022, Wisconsin PRAMS participants were asked supplemental questions about their experiences with social determinants of health, such as housing, financial stability, food security, access to mental health care, racism, and more. If you are interested in these data, please contact Wisconsin PRAMS. We also plan to release a data brief with these social determinants of health data in 2025.

We expect 2023 PRAMS data to become available in early 2025.



2024 Data Collection Underway

We are currently surveying people who gave birth in 2024. The 2024 Wisconsin PRAMS survey includes supplemental questions on access to contraceptives. These questions were created in partnership with the University of Wisconsin Collaborative for Reproductive Equity. We expect 2024 PRAMS data to become available in early 2026.

Stay Tuned!

Several Wisconsin PRAMS data products are on their way. In the coming months, we plan to release a report about Native mothers in Wisconsin and two interactive data dashboards: one focused on breastfeeding and the other on depression and pregnancy.

Check the [Wisconsin PRAMS website](#) for updates!



Accessing PRAMS Data

Please [contact Wisconsin PRAMS](#) with any requests or questions about data access!

Aggregate data or presentation

If you would like to request aggregate data or a presentation using PRAMS data, please [email Wisconsin PRAMS](#) with the details of your request. Aggregate data requests may require Division of Public Health Data Governance Board approval.

Research file

If you would like to access the PRAMS research file for your own analysis, please [email Wisconsin PRAMS](#) to request an application. Your completed application will be reviewed by the Division of Public Health Data Governance Board. Upon approval, a Data Use Agreement will be drafted granting you access to PRAMS data for your stated purpose.

National PRAMS data

The CDC provides the option to download PRAMS data across multiple jurisdictions. To access these data, you will need to fill out a form and create an online account. More information can be found on the [CDC PRAMS website](#).



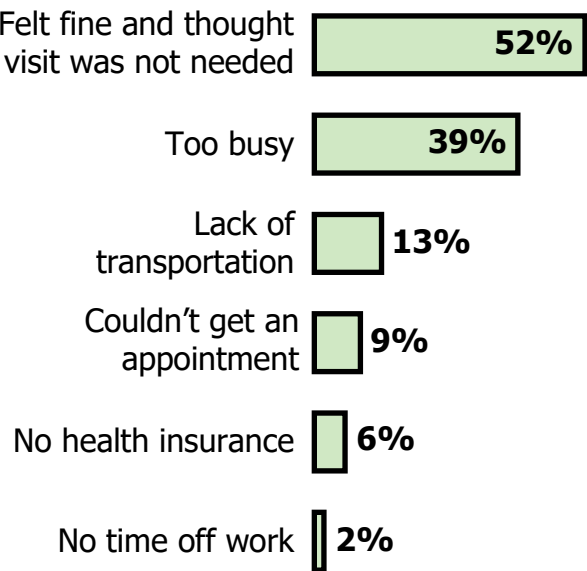
Data Highlight: Postpartum Checkups

Postpartum checkups often occur four to six weeks after a person gives birth. They are important for promoting the health of mothers and birthing people. Postpartum checkups provide an opportunity for monitoring recovery from giving birth, screening for mental health conditions, having family planning conversations, and addressing social and environmental needs.

94% of Wisconsin mothers had a postpartum checkup in 2022. This has not changed across the past several years.

The most common barriers to prenatal care included **feeling fine** and thinking a visit was not needed and **being too busy**.

Among those who did not have a postpartum checkup, percent who reported barriers:



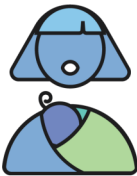
Insurance coverage after pregnancy impacts a person's ability to receive postpartum care. Mothers who had **private** insurance after pregnancy report having a postpartum checkup more often than those with **public** or **no** insurance.

Percent who had postpartum checkup:



Private insurance = Coverage through a private company or through TRICARE or other military health care
Public insurance = Coverage through Medicaid, BadgerCare Plus, or Indian Health Service or other Tribal health care

“ There just has to be more follow up with moms during postpartum period, we do a lot during prenatal but once the mom leaves the hospital she gets a post partum check up at six weeks and not much after that.
-PRAMS participant



We Want to Hear From You!

We are always looking for ways to bring PRAMS data to action. If you are interested in using PRAMS data for your program, we are happy to work together to help meet your needs. Please feel free to email us if you have any questions, ideas, or data needs!

Contact Us

Email: DHSDPHPRAMS@dhs.wisconsin.gov
Website: dhs.wisconsin.gov/stats/prams/index.htm



WISCONSIN DEPARTMENT
of HEALTH SERVICES